



July, 2013

Edited and Published by International Relations Office, Mie University  
1577 Kurimamachiya-cho Tsu city, Mie Pref.  
514-8507 JAPAN

2013

# Outline of MIE University

HUMANITIES, LAW AND ECONOMICS  
EDUCATION  
MEDICINE  
ENGINEERING  
BIORESOURCES  
REGIONAL INNOVATION STUDIES

MIE UNIVERSITY

## Contents

<input type="checkbox"/> Historical Chart	3
<input type="checkbox"/> Organization	5
<input type="checkbox"/> Operational Organization Chart	6
<input type="checkbox"/> Administrative Staff	7
<input type="checkbox"/> Faculties and Graduate Schools	9
<input type="checkbox"/> Institutes for Education and Research	12
<input type="checkbox"/> Education	13
<input type="checkbox"/> Research	15
<input type="checkbox"/> Links with Society and Contribution to Local Communities	17
<input type="checkbox"/> International Relations	19
<input type="checkbox"/> Information Infrastructure	20
<input type="checkbox"/> University Library	21
<input type="checkbox"/> Environment	23
<input type="checkbox"/> University Hospital	25
<b>(Data)</b>	
<input type="checkbox"/> University Library	
University Hospital	27
<input type="checkbox"/> Welfare Facilities	
Land and Buildings	28
<input type="checkbox"/> Admission Capacity and Number of Students	
Schools Affiliated with Faculty of Education	29
<input type="checkbox"/> Number of Scholarship Grantees	30
<input type="checkbox"/> Numbers of 2013 Applicants and Entrants	
Applicants and Entrants (Undergraduate)	31
<input type="checkbox"/> Number of 2012 Graduates and	
Number of Degrees Conferred	32
<input type="checkbox"/> Career Paths of 2012 Graduates	
Industries (Faculties), Region (Faculties)	33
Employment Situation by Prefectures (Faculties)	34
<input type="checkbox"/> Number of International Students	35
<input type="checkbox"/> International Exchange	36
<input type="checkbox"/> Number of Staff Members	37
<input type="checkbox"/> Budget (Fiscal Year 2013)	
Grant-in-Aid for Scientific Research (2012),	
Research in Cooperation with Private Sectors (2012)	38
<input type="checkbox"/> Mutual Cooperation Agreement with Community	
Extension Courses	39
<input type="checkbox"/> Mie University Regional Contribution Activities	
Mie University Research Centers	40
<input type="checkbox"/> Overview of Mie University (Kamihama Campus)	41
<input type="checkbox"/> Campus Map	43
<input type="checkbox"/> Location of Campus	45
<input type="checkbox"/> Campus Addresses	46

## Academic Calendar for 2013

<input type="checkbox"/> Academic Year Starts/Spring Semester Starts	Apr. 1
<input type="checkbox"/> Spring Vacation	Apr. 1 - 9
<input type="checkbox"/> Entrance Ceremony	Apr. 8
<input type="checkbox"/> Foundation Anniversary of Mie University	May 31
<input type="checkbox"/> Summer Vacation	Aug. 6-Sep. 30
<input type="checkbox"/> Spring Semester Ends	Sep. 30
<input type="checkbox"/> Fall Semester Starts	Oct. 1
<input type="checkbox"/> Winter Vacation	Dec. 21 - Jan. 15
<input type="checkbox"/> Graduation Ceremony	Mar. 25
<input type="checkbox"/> Fall Semester Ends/Academic Year Ends	Mar. 31

## Outline of Mie University (As of May 1, 2013)

<input type="checkbox"/> President, Trustees, and Auditors	8 persons
<input type="checkbox"/> Faculty Members	767 persons
<input type="checkbox"/> Staff Members	1,040 persons
<input type="checkbox"/> Undergraduate Students	6,171 persons
<input type="checkbox"/> Graduate Students	1,225 persons
<input type="checkbox"/> International Students	278 persons
<input type="checkbox"/> Partner Universities	86 universities/institutions (36 countries/region) *As of July 1, 2013
<input type="checkbox"/> Revenues	45,170 million yen
<input type="checkbox"/> Expenses	45,170 million yen
<input type="checkbox"/> Land Area	5,511,692m <sup>2</sup>
<input type="checkbox"/> Building Area	321,319m <sup>2</sup>
<input type="checkbox"/> Library Holdings	936,761 books *As of March 31, 2013



Mie University, fronting the picturesque Ise Bay, is surrounded by beautiful nature. We aim to establish the most environmentally advanced university in the world. It is a perfect university to give satisfactory results of education and research, and contribute toward society through these activities. We hope that many motivated personnel will join us here to help achieve our goals.

Atsumasa Uchida, M.D., Ph.D.  
President, Mie University

## Philosophy

As a center of learning, Mie University strives to contribute towards the “Development of Human Resources and Research,” enhancing the “Welfare of the Society,” through the “Harmonious Coexistence of Nature and Mankind.”

# From Mie to the World!

We provide world-class community-based education and research results through harmonious coexistence of nature and mankind



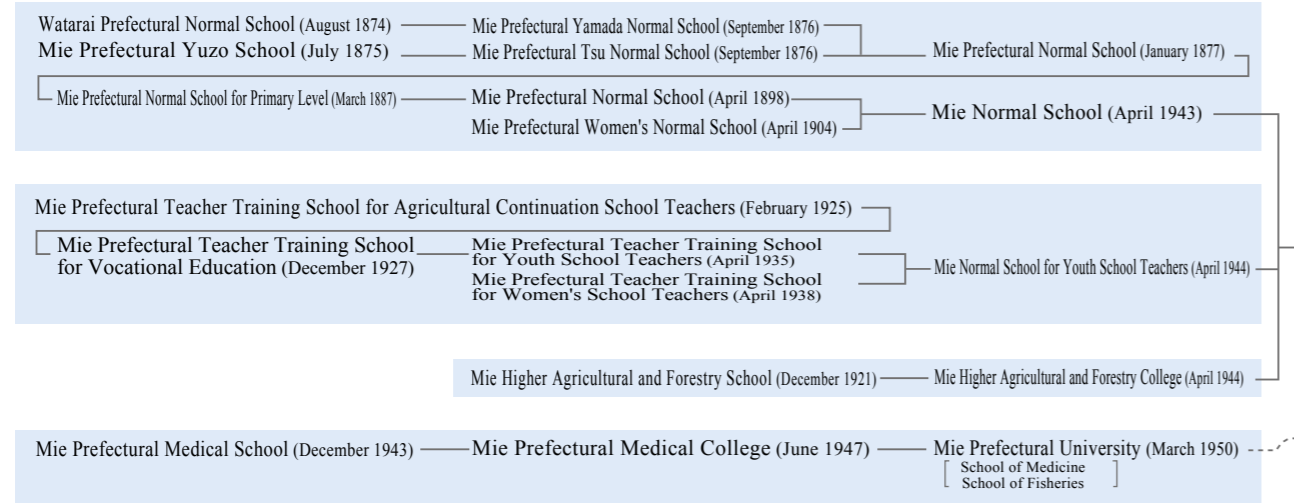
The school emblem has a double ring structure; one ring represents an ear of rice for a rewarding life; the other ring of waves, Rourin, represents the philosophy of Mie University, “Sansui: the three greens of sky, waves and mountain.”

This double ring structure expresses Mie University’s philosophy and wishes of long friendships and productive lives for its alumni.

In addition, the emblem is generally symmetrical, but the asymmetrical aspect of the design shows the free and progressive spirit of Mie University.

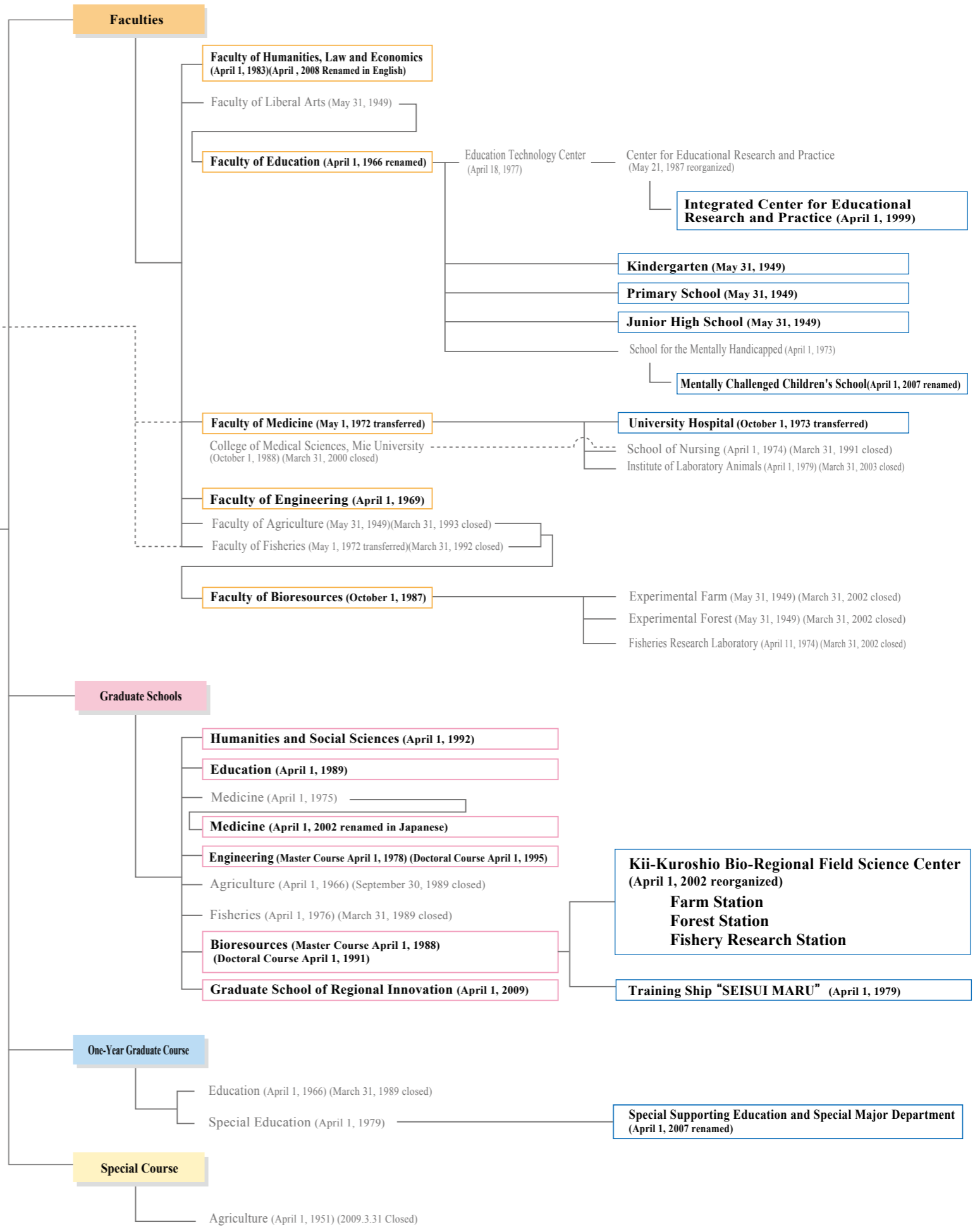
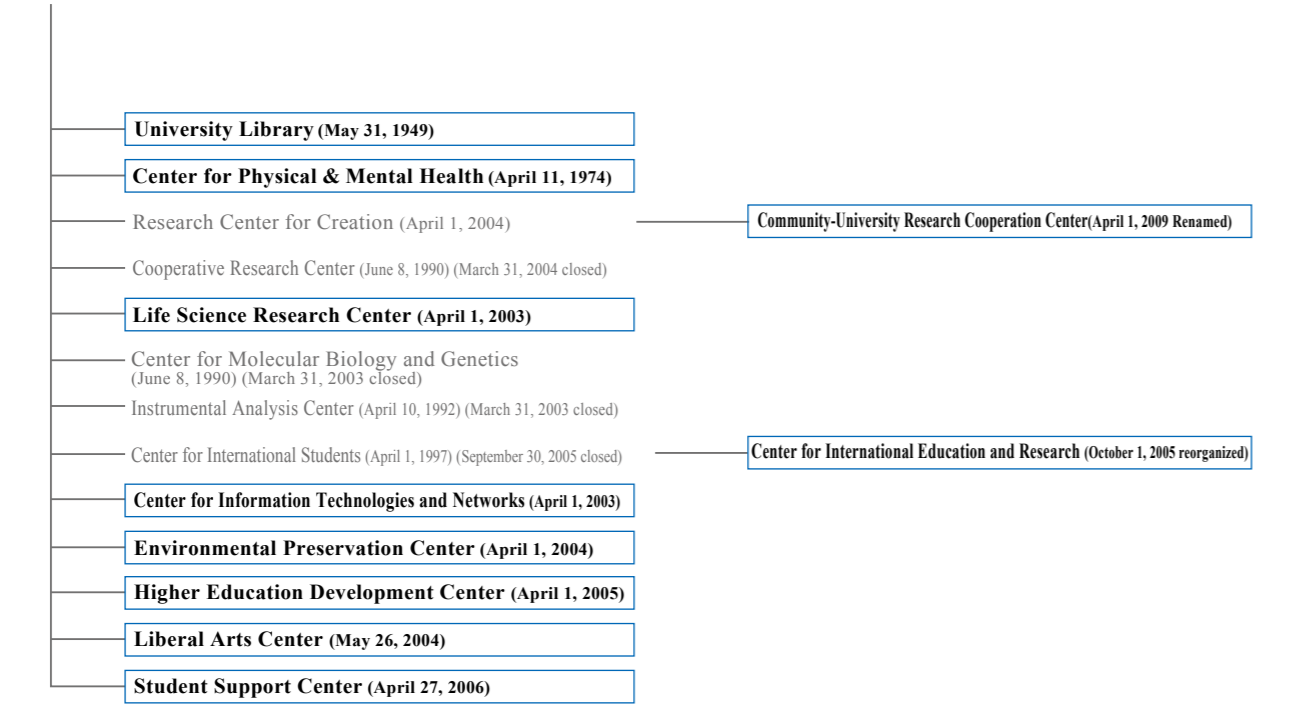
Mie University’ predecessor, Mie Normal School, was founded in 1874 and is the oldest of the existing five faculties.

# Historical Chart



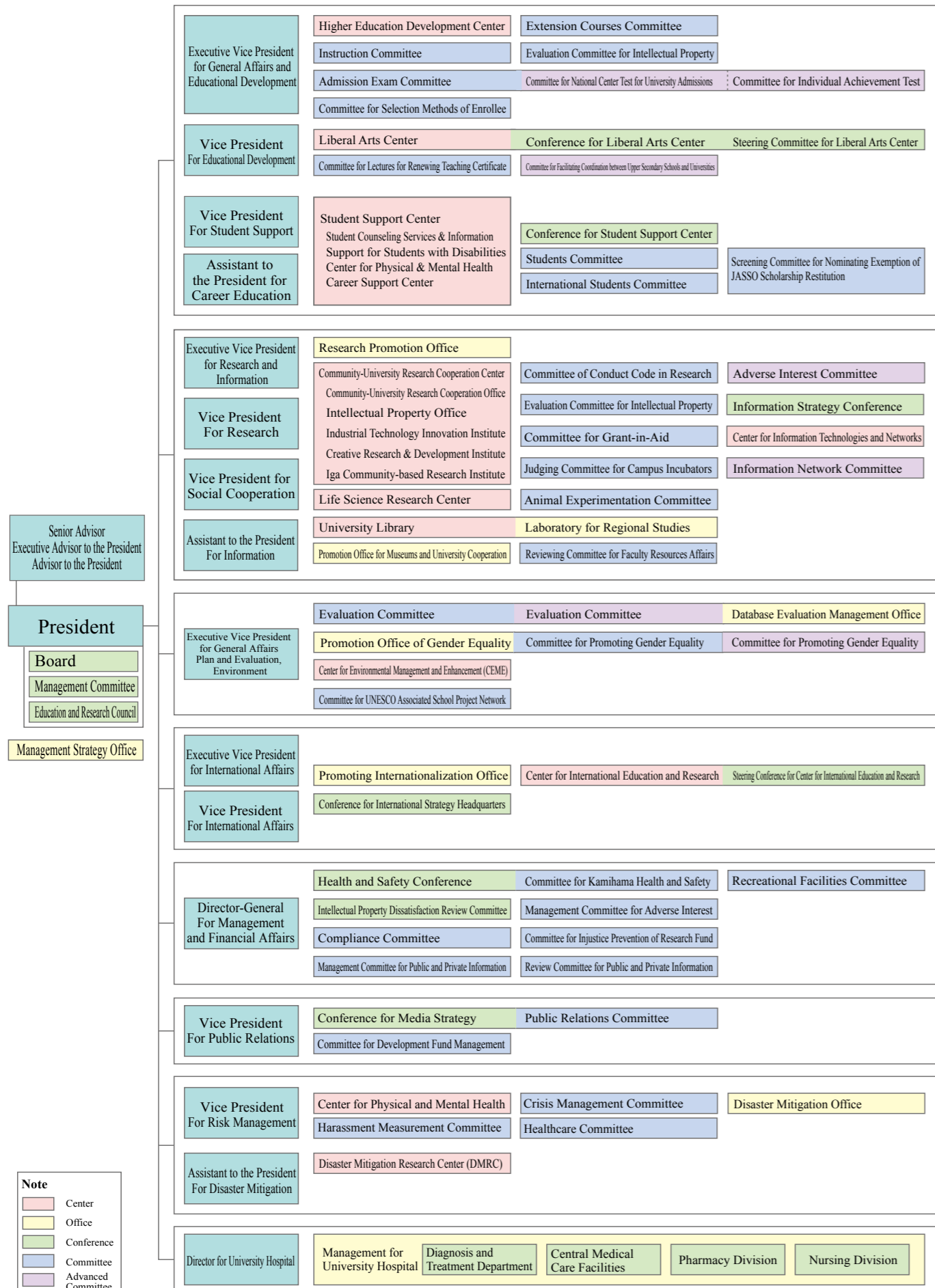
# Mie University

(May 31, 1949)  
 National University Corporation  
 Mie University  
 (April 1, 2004)

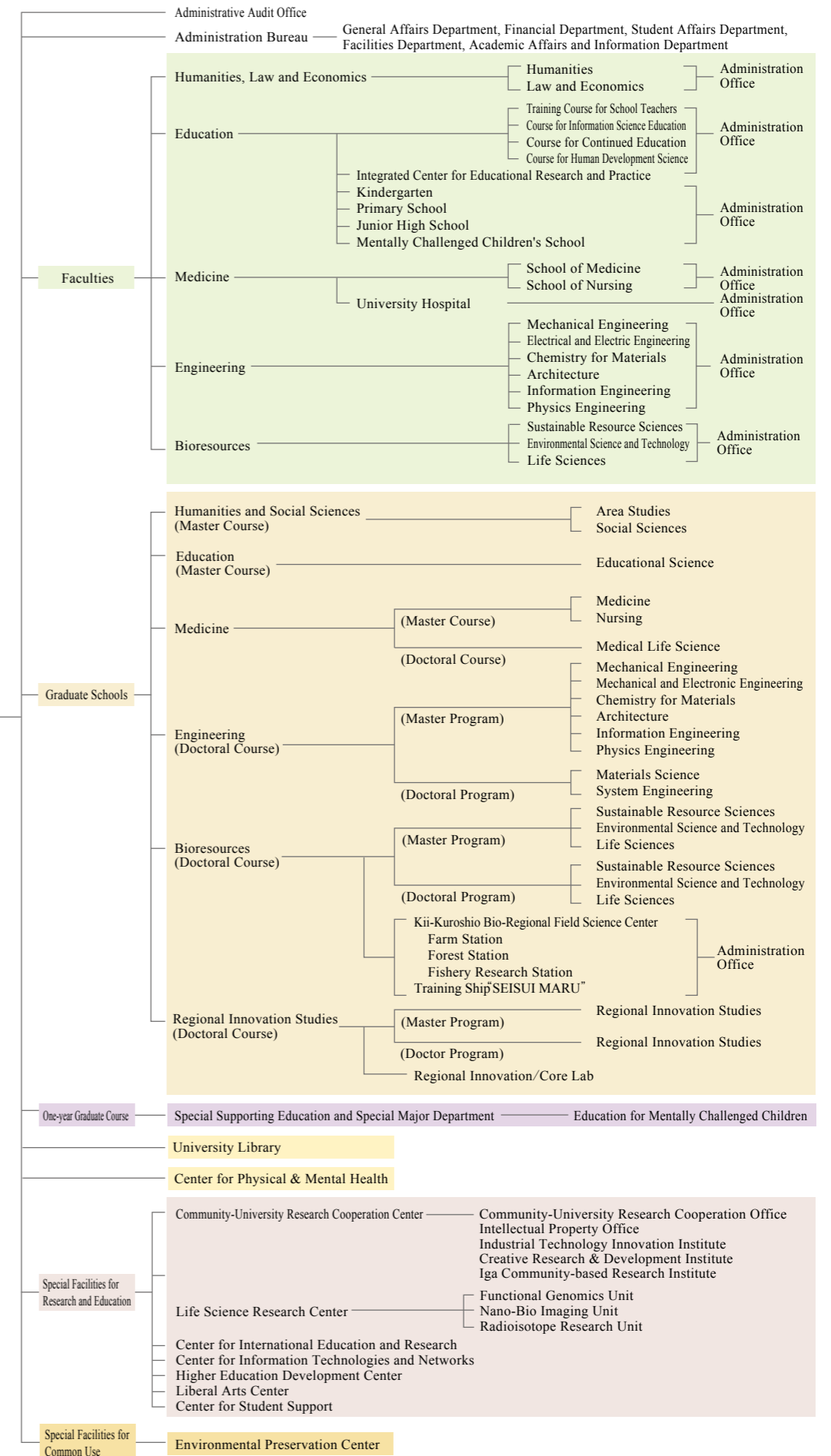


# Organization

June 1, 2013



# Operational Organization Chart



**Board**

President	UCHIDA, Atsumasa
Executive Vice President (General Affairs and Educational Development)	TANAKA, Akiyoshi
Executive Vice President (Research and Information)	YOSHIOKA, Motoi
Executive Vice President (General Affairs Plan and Evaluation, Environment)	PARK, Hye-Sook
Executive Vice President (International Affairs)	HORI, Hiroki
Executive Director-General (Management and Financial Affairs)	SUZUKI, Suguru
Auditor General	HASHIMOTO, Yoichi
Auditor	TAJIMA, Kazunori
Vice President (Educational Development)	YAMAMOTO, Toshihiko
Vice President (Student Support)	GOTO, Taichiro
Vice President (Research Development)	HORIUCHI, Takashi
Vice President (Social Cooperation)	NISHIMURA, Norihiro
Vice President (International Affairs)	EHARA, Hiroshi
Vice President (Public Relations)	KODAMA, Katsuya
Vice President (Risk Management)	SUMIDA, Yasuhiro

**Assistant to the President**

Assistant to the President (Career Education)	NAKAGAWA, Tadashi
Assistant to the President (Information)	OKUMURA, Haruhiko
Assistant to the President (Disaster Mitigation)	HATANAKA, Shigemitsu

**Senior Advisor**

Senior Advisor	TAKEDA, Yasuo
----------------	---------------

**Executive Advisor to the President**

Executive Advisor to the President	SHIKU, Hiroshi
------------------------------------	----------------

**Advisor to the President**

Advisor to the President	NISHIOKA, Kusuki
Advisor to the President	HIDAKA, Hiroyoshi
Advisor to the President	SUZUYAMA, Masako
Advisor to the President	WATANABE, Teiji
Advisor to the President	KATO, Seizo

**Management Committee**

**(Internal Committee Members)**

President	UCHIDA, Atsumasa
Executive Vice President	TANAKA, Akiyoshi
Executive Vice President	YOSHIOKA, Motoi
Executive Vice President	PARK, Hye-Sook
Executive Vice President	HORI, Hiroki
Executive Director-General	SUZUKI, Suguru
Director for University Hospital	TAKEDA, Kan

**(External Committee Members)**

President, Mie Television Broadcasting Co., Ltd	SHIDA, Yukihiko
Director, Tokyo National Museum	ZENIYA, Masami
Director, Suzuka University of Medical Science	TAKAGI, Junichi
President, Hikarikikai Seisakusho	NISHIOKA, Keiko
Chairman of the Board, Komatsu Ltd.	NOJI, Kunio
Advisor, Chubu Electric Power Co., Inc.	MIYAIKE, Yoshihito
President, Mie Prefectural College of Nursing	MURAMOTO, Junko
Chairman, Credit Guarantee Corporation of Mie-Ken	YASUDA, Toshiharu
Executive Director, Hyakugo Bank	WATANABE, Yoshihiko

**Education and Research Council**

President	UCHIDA, Atsumasa
Executive Vice President	TANAKA, Akiyoshi
Executive Vice President	YOSHIOKA, Motoi
Executive Vice President	PARK, Hye-Sook
Executive Vice President	HORI, Hiroki
Executive Director-General	SUZUKI, Suguru
Vice President	YAMAMOTO, Toshihiko
Vice President	GOTO, Taichiro
Vice President	HORIUCHI, Takashi
Vice President	NISHIMURA, Norihiro
Vice President	EHARA, Hiroshi
Vice President	KODAMA, Katsuya
Vice President	SUMIDA, Yasuhiro
Dean, Faculty of Humanities, Law and Economics	KODAMA, Shigeru
Dean, Faculty of Education	FUJITA, Tatsuo
Dean, Graduate School of Medicine	OGATA, Masato
Dean, Graduate School of Engineering	ITO, Tomonori
Dean, Graduate School of Bioresources	GOTO, Masakazu
Dean, Graduate School of Regional Innovation Studies	KOBAYASHI, Kazunari
Director, University Hospital	TAKEDA, Kan
Representative, Special Facilities for Research and Education	FUKUOKA, Masako
Professor, Faculty of Humanities, Law and Economics	IGUCHI, Yasushi
Professor, Faculty of Education	YAMAGUCHI, Yasuhiro
Professor, Graduate School of Medicine	KOMADA, Yoshihiro
Professor, Graduate School of Engineering	KOBAYASHI, Hideo
Professor, Graduate School of Bioresources	UMEKAWA, Hayato

**Admission Bureau**

Executive Director-General	SUZUKI, Suguru
Head, Administrative Audit Office	ODA, Yukari
Director, General Affairs and Planning Department	KOSHIN, Toshimitsu
Head, General Affairs Office	OGISU, Osamu
Head, General Planning Office	ENDO, Akinori
Head, Legal Planning Office	MIYAZAKI, Tetsuo
Head, Personnel Office	MURAI, Sumio
Head, Welfare Office	SAKURAI, Masaya
Director, Financial Department	SAKAI, Tetsuo
Head, Financial Planning Office	HATTORI, Juri
Head, Management Office	TAKAKURA, Ryosuke
Head, Contract Office	IZAWA, Katsuhiko
Director, Student Affairs Department	NAKAMURA, Kenichi
Head, Educational Affairs Office	OGAI, Motoshige
Head, Office for New Liberal Arts Education	KURATA, Koji
Head, Student Affairs Office	NONOMURA, Haruko
Head, Career Support Office	KUSAKAWA, Masahiko
Head, Admission Office	KITAYAMA, Shigeki
Director, Facilities Department	HAMADA, Shinji
Head, Facility Planning Office	KURANO, Atsuo
Head, Facility Management Office	ICHIO, Shigeaki
Head, Facility Maintenance Office	AZUMA, Sadao
Director, Academic Affairs and Information Department	YAMAMURA, Mikio
Head, Research Support Office	OHNO, Yoshifumi
Head, Social Cooperation Management Office	UEKAWA, Masaishi
Head, Management Information & Library Office	ISOYA, Mineo
Head, International Relations Office	SUGAYA, Junko

**Each Center Director**

Community-University Research Cooperation Center Director	YOSHIOKA, Motoi
Life Science Research Center Director	NOSAKA, Tetsuya
Center for International Education and Research Director	HORI, Hiroki
Center for Information Technologies and Networks Director	ISU, Naoki
Higher Education Development Center Director	TANAKA, Akiyoshi
Liberal Arts Center Director	YAMAMOTO, Toshihiko
Student Support Center Director	GOTO, Taichiro
Center for Physical & Mental Health Director	SUMIDA, Yasuhiro

**University Library**

Director	YOSHIOKA, Motoi
----------	-----------------

**Faculty of Humanities, Law and Economics**

Dean	KODAMA, Shigeru
Vice Dean	TAKAHASHI, Hideharu
Head, Office for Faculty of Humanities, Law and Economics	TANAKA, Akira

**Faculty of Education**

Dean	FUJITA, Tatsuo
Vice Dean	TSURUHARA, Kiyoshi
Head, Faculty of Education	YAMAZAKI, Haruo
Director, Integrated Center for Educational Research and Practice	NITTA, Takashi
Headmaster, Kindergarten	YAGI, Norio
Headmaster, Primary School	YOSHIMOTO, Toshiko
Headmaster, Junior High School	SHIMOMURA, Tsutomu
Headmaster, Mentally Challenged Children's School	NEZU, Chikako
Head, Office for Attached Schools, Faculty of Education	YAMASHITA, Ikuo

**Graduate School of Medicine and Faculty of Medicine**

Dean	OGATA, Masato
Vice Dean	SHIRAISHI, Taizo
Vice Dean	KATAYAMA, Naoyuki
Head, Office for Graduate School of Medicine and Faculty of Medicine	FUKUNAGA, Yasuji

**University Hospital**

Director	TAKEDA, Kan
Vice Director	ITO, Masaaki
Vice Director	KADOWAKI, Ayako
Vice Director	ISAJI, Syuji
Vice Director	SHINPO, Hideto
Vice Director	TOMIMOTO, Hidekazu
Advisor to the Director	IIDA, Aiko
Advisor to the Director	IWATA, Kazuko
Advisor to the Director	KONISHI, Kunihiko
Advisor to the Director	TAJIMA, Kazuo
Director, Pharmacy Division	OKUDA, Masahiro
Director, Administration Office	MUNECHIKA, Seiichiro
Head, General Affairs Office	YAMADA, Hiroyuki
Head, Management Office	MAEJIMA, Koji
Head, Patient Service Office	KUSAKAWA, Yayoi

**Graduate School of Engineering and Faculty of Engineering**

Dean	ITO, Tomonori
Vice Dean	MAKI, Seiji
Head, Office for Faculty of Engineering and Graduate School of Engineering	YOKOYAMA, Kazuhito

**Graduate School of Bioresources and Faculty of Bioresources**

Dean	GOTO, Masakazu
Vice Dean	KANO, Satoshi
Head, Office for Faculty of Bioresources and Graduate School of Bioresources	KAWAHARA, Shigeru
Director, Kii-Kuroshio Bio-regional Field Science Center	KOUBARA, Jun
Director, Training Ship "SEISUI MARU"	UCHIDA, Makoto
Head, Office for Faculty of Bioresources and Graduate School of Bioresources	WATANABE, Kiyoshi

**Graduate School of Regional Innovation Studies**

Dean	KOBAYASHI, Kazunari
Vice Dean	TSURUOKA, Shinji
Head, Office for Graduate School of Regional Innovation Studies	KAWAHARA, Shigeru

**Environmental Preservation Center**

Director	KANEKO, Satoshi
----------	-----------------

**Presidents**

1st	OKAIDE, Yukio	May 31, 1949 - May 31, 1957
acting	NAKANO, Seisaku	June 1, 1957 - December 9, 1957
2nd	NOMURA, Takee	December 10, 1957 - December 9, 1966
acting	KADOYA, Tatsujiro	December 10, 1966 - February 28, 1967
3rd	NODA, Tokichi	March 1, 1967 - February 28, 1970
acting	IMACHI, Isamu	March 1, 1970 - March 16, 1970
4th	NODA, Tokichi	March 17, 1970 - November 8, 1971
acting	IWAMOTO, Kiichi	November 9, 1971 - June 30, 1972
acting	SAKAKIBARA, Shingo	July 1, 1972 - February 2, 1974
5th	MIKAMI, Yoshiki	February 10, 1974 - February 9, 1980
6th	IZAWA, Tadasu	February 10, 1980 - February 9, 1986
7th	TAKEDA, Susumu	February 10, 1986 - February 9, 1992
8th	TAKEMURA, Yasuo	February 10, 1992 - February 9, 1998
9th	YATANI, Ryuichi	February 10, 1998 - March 31, 2004
10th	TOYODA, Nagayasu	April 1, 2004 - March 31, 2009
11th	UCHIDA, Atsumasa	April 1, 2009 -

## Faculties and Graduate Schools

○ for Doctoral Chairs and △ for Master's Chairs

Faculties	Graduate Schools	Chairs	
Departments and Courses	Divisions		
Faculty of Humanities, Law and Economics (2 Departments)	Graduate School of Humanities and Social Sciences (Master Course, 2 Divisions) 6 Chairs		
Department of Humanities	Area Studies Course	△ Japanese Studies △ European and Mediterranean Studies	△ Asian and Oceanian Studies △ American Studies
Department of Law and Economics	Social Sciences Course	△ Research Group of Law and Politics △ Research Group of Contemporary Economy	
Faculty of Education (4 Courses)	Graduate School of Education (1 Major, 5 Areas) 15 Chairs		
Training Course for School Teachers	Major in Educational Science	△ Language and Literature Education	△ Social Studies Education
Course for Information Science Education	School Education	△ Mathematical Education	△ Science Education
Course for Continued Education	Special Needs Education	△ Music Education	△ Fine Arts Education
Course for Human Development Science	Humanities and Social Studies Education	△ Health and Physical Education	△ Technology/ Manufacturing Education
	Science, Mathematics and Living Sciences Education	Information Science Education	△ Technology Education
	Arts and Physical Education	△ English Language Education	△ Home Economics Education
		Science of Early Childhood Education	△ Special Support Education
		Continued Education	△ School Education

Faculty of Medicine (2 Schools) Graduate School of Medicine (Doctoral Course, 1 Major, 2 Divisions/ 63 Departments) (Master Course, 2 Majors)

School of Medicine	(Doctoral Course)	○△ Basic Medicine	Neural Regeneration and Cell Communication Developmental and Regenerative Medicine Biochemistry and Proteomics Stem Cell and Developmental Biology Neurophysiology Pathology and Matrix Biology Pathologic Oncology Pharmacogenomics and Pharmacoinformatics Molecular Pathobiology & Cell Adhesion Biology Microbiology and Molecular Genetics Immunology	Medical Zoology and Parasitology Environmental and Molecular Medicine Public Health and Occupational Medicine Forensic Medicine and Sciences Medical Education Translational Medical Science Immunoregulation Developmental Social Medicine Animal Functional Genomics Medical Genomics and Proteomics	
		○△ Clinical Medicine	Cardiology and Nephrology Hematology and Oncology Gastroenterology and Hepatology Pulmonary and Critical Care Medicine Diabetes, Metabolism and Endocrinology Neurology Family Medicine Psychiatry Pediatrics Dermatology Radiology Molecular and Laboratory Medicine Clinical Pharmacy and Biopharmaceutics Hepatobiliary Pancreatic and Transplant Surgery Gastrointestinal and Pediatric Surgery Thoracic and Cardiovascular Surgery	Breast Surgery Obstetrics and Gynecology Neurosurgery Musculoskeletal Surgery and Multimodality Therapy for Cancer Nephro-Urologic Surgery and Andrology Ophthalmology Otorhinolaryngology- Head and Neck Surgery Oral and Maxillofacial Surgery Anesthesiology and Critical Care Medicine Clinical Anesthesiology Emergency and Disaster Medicine General Internal Medicine Neonatology Child Medical Health and Development Stress Science Health Promotion and Disease Prevention	
	(Master Course)	Medicine	(Industry-Academic-Government Cooperation) ○△ Immuno-Gene Therapy	Immuno-Gene Therapy	
			○△ Clinical Human Research Promotion and Drug Development	Human Research Promotion and Drug Development	
			○△ Innovative Neuro-Intervention Radiology	Innovative Neuro-Intervention Radiology	
			○△ Community Comprehensive Care and Geriatrics	(Family Medicine)	
		Nursing	○△ Dementia Prevention and Therapeutics	Dementia Prevention and Therapeutics	
			○△ Cancer Vaccine	Cancer Vaccine	
			○△ Innovative Surgery	Innovative Surgery and Surgical Techniques Development	
			○△ Orthopedics and Sports Medicine	Orthopedics and Sports Medicine	
	○△ Spinal Surgery and Medical Engineering	Spinal Surgery and Medical Engineering			
	○△ Clinical Cardiovascular Research	Clinical Cardiovascular Research			
	○△ Community Medicine, Kameyama	(Family Medicine)			
	○△ Community Medicine, Iga	(Family Medicine)			
	○△ Community Medicine, Tsu	(Family Medicine)			
	(Cancer Professional Training Foundation Promoting Plan) ○△ Radiation Oncology	Radiation Oncology			
School of Nursing	(Master Course) Nursing	△Basic Nursing △Maternal and Child Nursing	△Adult/Psychiatric Nursing △Community/Geriatric Nursing		

Faculty of Engineering (6 Departments)		Graduate School of Engineering (Doctoral Course, 8 Divisions) 20 Chairs	
Department of Mechanical Engineering	(Master Program) Division of Mechanical Engineering	△ Quantum Engineering and Electromechanics △ Environmental Energetics	△ Advanced Materials and Processes
Department of Electrical and Electronic Engineering	Division of Electrical and Electronic Engineering	△ Electrical System Engineering △ Electronic Material Science and Technology	△ Information and Communication Systems
Department of Chemistry for Materials	Division of Chemistry for Materials	△ Molecular Design △ Materials Science	△ Biological and Functional Chemistry
Department of Architecture	Division of Architecture	△ Architectural Design	△ Architectural Management
Department of Information Engineering	Division of Information Engineering	△ Computer Science	△ Artificial Intelligence
Department of Physics Engineering	Division of Physics Engineering	△ Quantum Mechanical Engineering	△ Nanotechnology
	(Doctoral Program) Division of Materials Science Division of Systems Engineering	○ Materials Property ○ Electrical Information System ○ Recycling System Design	○ Materials Chemistry ○ Design System

Faculty of Bioresources (3 Departments)		Graduate School of Bioresources (Doctoral Course, 6 Divisions) 17 Chairs	
Department of Sustainable Resource Sciences	(Master Program) Sustainable Resource Sciences	△ Biocirculation △ Sustainable Social System	△ Sustainable Bioscience and Bioengineering
Department of Environmental Science and Technology	Environmental Science and Technology	△ Regional Conservation Engineering △ Forest Resources and Environment	△ Environment Oriented Information and System Engineering △ Geosystem Science
Department of Life Sciences	Life Sciences	△ Bioscience △ Animal and Plant Sciences	△ Marine Biological Science △ Fisheries Science
	(Doctoral Program) Sustainable Resource Sciences Environmental Science and Technology Life Sciences	○ Applied Bioscience and Bioengineering ○ Environmental Conservation and Sustainable Development ○ Molecular Life Science	○ Frontier Science in Environmental Studies ○ Sustainable Rural Development and Conservation ○ Applied Bioresource Science

#### Graduate School of Regional Innovation Studies (Doctoral Course, 2 Division) 2 Units

	(Master Program) Regional Innovation Studies	△ Advanced Fusion Engineering Unit △ Integrated Bioscience Unit
	(Doctoral Program) Regional Innovation Studies	○ Advanced Fusion Engineering Unit ○ Integrated Bioscience Unit

#### One-Year Graduate Course

#### Special Support Education

## Institutes for Education and Research

### Special Facilities for Research and Education

Institution	Purpose
Community-University Research Cooperation Center	Coordinates collaborative research with private organizations, offering trainings of researchers and consultation for technical needs.
Life Science Research Center	Consists of the Units of Functional Genomics, of Nano-Bio Imaging Unit and a Radioisotope Research. Supporting and promoting educational research in experimental science field.
Center for International Education and Research	CIER, the Center for International Education and Research, was inaugurated on October 1st, 2005, as a special facility for research and education. The aim of the CIER was to become the heart of internationalization in Mie University. Currently, our partnership has expanded to 79 universities in 28 countries, conducting mutual exchange activities and international collaborative research.
Center for Information Technologies and Networks	Supports research and educational activities through the use of computers, servers and other information technologies. Also provides the basis for campus network security.
Higher Education Development Center	Creates, develops, promotes, and supports activities for the achievement of educational goals.
Liberal Arts Center	Aims at the planning and improvement of the Liberal Arts Center and its effective management. It consists of the divisions of Educational Affairs, Liberal Arts Education, and Practical Education. In addition, it advances improvement of the curriculum in Liberal Arts Education, educational methods toward an expansion of Liberal Arts and introduction of foreign language education for cultivating both rich human development and study skills based on a broad academic and international outlook.
Center for Student Support	Aims at helping students live more fulfilling school lives by providing support for their daily and academic lives and career pursuits.
Disaster Mitigation Research Center (DMRC)	Works on promoting research activities, education and social cooperation on disaster mitigation in Mie utilizing achievements of research activities and human resources of Mie University. In addition, DMRC works to cultivate human resources for the enhancement of regional disaster prevention schemes by collaborating with the "Advanced Course for Disaster mitigation, (Umashi-kuni-okoshi Mie Sakimori Jyuku), Graduate School of Engineering, Mie University which is a program sponsored by the Ministry of Education, Culture, Sports, Science and Technology.
Office for Promotion of Museums and University Cooperation	Develops regional and research networks by promoting organized cooperation and collaboration with museums.
Office for Promoting Gender Equality	Mie University has been promoting many activities through the "Mie University Declaration for Gender Equality" established in July, 2008. The Committee for Promoting Gender Equality mainly conducts the activities since then. The "Women Researchers Support" program sponsored by the Ministry of Education, Culture, Sports, Science and Technology which lasted for 3 years has now finished and the Support Office for Women Researchers has been dissolved and absorbed into a new organization as the "Office for Promoting Gender Equality" in April 2011. The new organization aims to plan and conduct continuous and planned projects for the formulation of "Work-Life Balance."
Center for Environmental Management and Enhancement (CEME)	At the Kamihama campus, excluding the University Hospital, the Environmental Management System (EMS) which encompasses the activities of the Mie University ISO Student Committee confirmed the adoption of ISO 14001: 2004 Standard and acquired the nation's first certificate for a whole university on November, 2007. The ISO Promotion Office will continue to strive for the improvement of the Environmental Management System (EMS), Smart Campus Project, and Education for Sustainable Development and will continue to fulfill its responsibilities socially as well as promoting Mie University as one of the world's most environmentally advanced universities.
Advanced Course for Disaster Mitigation (Umashi-kuni-okoshi Mie Sakimori Jyuku)	It offers an advanced course to cultivate human resources to take initiatives and act for the disaster prevention activities and to decrease the effects on the occasion of a natural disaster occurring in Mie. Based on the knowledge of Mie University, we cooperate with Mie Prefectural Office, municipality, and the private sector to cultivate human resources for regional disaster mitigation.

### Affiliated Facility of Faculties

Institution	Purpose
Integrated Center for Educational Research and Practice	Conducts comprehensive research on educational practice and gives instructions based on the research results.

### Affiliated Facilities of Graduate Schools

Institution	Purpose
Kii-Kuroshio Bio-Regional Field Science Center	Provides practical education and applied research opportunities on coexistence of human life and nature in the ecosystem that ranges from the Kii Peninsula to the Kuroshio Current.
Farm Station	Manages practical education and applied research in agricultural studies.
Forest Station	Manages practical education and applied research in forest resources and preservation.
Fishery Research Station	Involves in practical education and applied research of fishery science, marine biology and preservation of marine environment.
Training Ship "SEISUI MARU"	Conducts practical/experimental survey research on fishery science/biological oceanography/ocean environment.
Graduate School of Regional Innovation Studies Regional Innovation / Core-Lab	Cultivating highly-specialized professionals and sending them into society and conducting collaborative researches among government, industry, and academia.

### Special Facilities for Common Use

Institution	Purpose
Environment Preservation Center	Operates management of waste water, general waste, and air pollution on campus appropriately to prevent pollution and conserve the environment.

As one of the centers of learning, we provide world-class community-based unique education and research focusing upon the harmonious coexistence of nature and mankind rooted in community. As our is “Education,” we strive for the development of international and creative personnel who have “The Ability to Communicate,” “The Ability to Empathize,” and “The Ability to Think,” with the comprehensive ability of “The Ability to Live.” The Higher Education Development Center and The Liberal Arts Center were established to extend our distinctive educational challenges for all departments.

### Higher Education Development Center

Higher Education Development Center was opened to assist in achieving the educational goals of Mie University. For educational activities, seven divisions are organized to lead creative development and to support the promotion of Educational Development, Information System, Assessment, Collaboration, Public Relations Admissions Method to cultivate abundant interdisciplinary knowledge and basic education with broader perspective.

### Liberal Arts Center

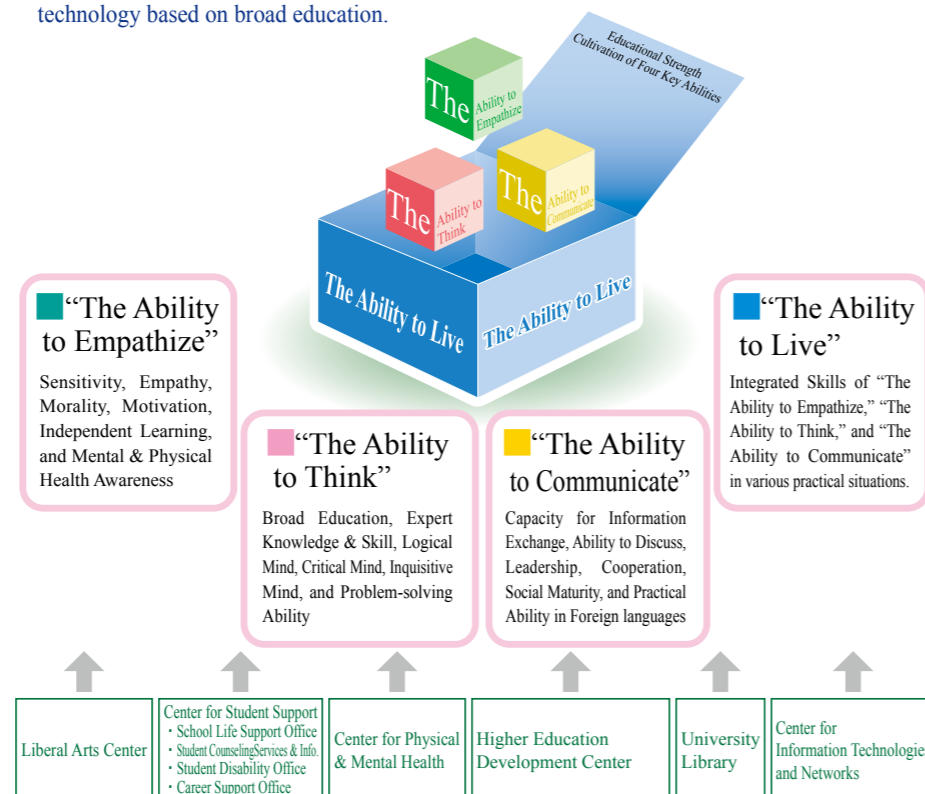
Academic Affairs, General Education, and Practical Education divisions were set for the purpose of scheme, improvement and management of our Liberal Arts Programs in May 2004. We introduce practical English Language Programs and improve the curriculums for liberal arts as well and progress our educational method to cultivate abundant knowledge and basic education interdisciplinary with broader perspective.

### Center for Student Support

We support students for discovering their own abilities, imagining their future, designing the steps for achieving their goals, and shining as a real treasure on their own following our “Mie University Student Support Policy.” Specialized faculty and staff members support students at the “School Life Support Office,” “Student Disability Office,” “Student Counseling Services & Info,” and “Career Support Center.”

## Educational Goals

We develop “Four Key Abilities,” which are “The Ability to Empathize,” “The Ability to Think,” “The Ability to Communicate” and “The Ability to Live,” for the cultivation of human beings who are capable of promoting regional innovation with advanced knowledge and technology based on broad education.



## Career Development Education

### First Year Education: “Four Key Abilities” Start-up Seminar

At Mie University, we have provided the “Four Key Abilities” Start-up Seminar for all newly enrolled students since 2009. This is a seminar to help acquire broad generic skills, with an understanding of the educational goals of Mie University’s “Four Key Abilities.” It has been brought to national attention as a highly esteemed seminar in which students can learn the academic skills required for university study.

### Liberal Arts: ① Educational Program for Career Peer Supporter Qualification, ② Education for Sustainable Development Program

- ① We encourage students to gain the beginner and upper level qualifications of Mie University in order to obtain a wide range of work experiences. The students who have finished this program become peer supporters to assist the education of students.
- ② We encourage students to gain various environmental qualifications. The students who have completed the subjects specified by this program will be granted the “Certificate for Education for Sustainable Development Program.”

### Specialized Education: For Collaborating with Society

Mie University conducts career advancement education which develops independent personnel with social and practical abilities through mutual support programs with faculty, staff members and students setting peer support office.

## PBL (Problem-Based Learning) Tutorial Education

In Mie University, we provide PBL Tutorial Education for students to have opportunities to work in small groups. It helps students to increase not only their communication skills, but problem solving ability and personal enhancement.

## E-Learning

An E-Learning Education System is to provide tools and information using the web to improve students’ communication skills for PBL Tutorial Education. With the help of Center for Information Techniques and Networks, the system enables:

- Web delivery of information such as PBL case scenarios (via Moodle, E-Learning System)
- Discussion in small groups during tutorials using a laptop and a monitor
- Web-based information sharing and having discussion among students
- Access to conversations with teaching staff outside class hours through the web
- Access to portfolio and reflection through the web

## JABEE (Japan Accreditation Board for Engineering Education) Accredited Education Program

Engineering Education Programs were accredited by JABEE. These programs are conducted by Department of Electrical and Electronic Engineering and Department of Architecture (Faculty of Engineering), Department of Life Sciences and Environmental Science and Technology (Faculty of Bioresources) which meet the socially and internationally expected standards of professional engineering education.

## Improvement of Communication Skills

Students are to take TOEIC IP test as a placement for English lessons and Chinese Proficiency Test is used to assess students’ practical Chinese abilities. Students in Faculty of Medicine are to take Nationwide CBT (Computer-Based-Test) to check their knowledge. “International Education Programs in foreign languages” are offered by Common Education Center and Center for International Education and Research to improve their communication skills and also “Handbook of Report Writing for University Students” is released to improve students’ writing skills in Japanese.

## Regional Contribution

### Promotion of High School Education

Mie University contributes toward promotion of the “Super Science High School Program” and “Science Partnership Program.” We also offer conferences for promoting educational collaboration between universities and high schools, and accredited open classes and summer seminars to high school students. In addition, Mie University faculty members visit high schools and give “Delivery Lectures.” In 2012, we visited high schools around 120 times for 5,600 students.

### Lectures for Renewing Teaching Certificate

We offer “Lectures for Renewing Teaching Certificate” accredited by the Ministry of Education, Culture, Sports, Science & Technology, which is obligated for the teachers to renew their certificates. About 3,500 people took the lectures in the 136 courses in 2012.

### Extension Courses for the General Public

We provide extension course for the general public and deliver lectures at “Mie Academic Seminar” as well. Around 8,500 people attended the lectures in 2012. In addition, among some of the regular courses at Mie University, around 40 courses are opened to the general public and about 20 people yearly join in the courses.

In Mie University, we strive to enhance various creative applied and basic research activities, and keep our traditions to develop further international research in scientific fields and innovative research contributing towards the society.

We will never be satisfied with the research in the limited fields, our motivation is always be globalized, and our research activities are making the circle of industry, economics, society, nature, history and culture. This is the motive and the theme for our researches creating our future.

We continue to have strong adhesion with community as a cross-learning complex. We also established “Research Strategic Promotion Office” in 2009 to reflect our research activities and the results to the education.

We encourage strengthening collaboration with each office and other universities for improvement of research environment and increase of sponsorship contract. Since 2011, we have set the Industrial Technology Innovation Institute and Creative Research & Development Institute including the Food Materials Search Lab, which is one of the Institutes of “Mie Regional Innovation with Food.”

## Research Approaches

### Mie University Support Project for the Development of the Creative and Advanced Center of Excellence

- ◎ For the development of research institutes with creativity and advancement
- ◎ For promoting international research to solve international issues
- ◎ For upgrading unique and excellent research

### Mie University Support Program for Promoting International Research

### Mie University Support Program for Research Development

### Mie University Research Center

- ◎ For promoting research proposals with new perspectives (<http://www.mie-u.ac.jp/research/>)

### Collaboration with Local Authorities

- ◎ Promotion of pharmaceutical, health, and welfare industries (Mie Medical Valley Project)
- ◎ Promotion of next-generation batteries and Mechatronics Robots industry
- ◎ Promotion of the environment and natural energy industries
- ◎ Cooperation and support for disaster mitigation in the region
- ◎ Strengthening of collaboration with communities (Yokkaichi service front, Iga Community-based Research Institute, Owase-Mie University Cooperation Office, Taki-cho Collaborative Office for Regional Strategy and etc.)

### Collaboration with Regional Universities and Research Institutes

- ◎ Universities: Wakayama University, Suzuka University of Medical Science, Asahi University, and Affiliated Graduate Schools
- ◎ Research Institutes: National Institute Vegetable and Tea Science, Fishery Research Agency, Mie Chuo Medical Center, National Mie Hospital, National Institute of Occupational Safety and Hygiene, National Institute of Biomedical Innovation, Forestry and Forest Products Research Institute-Kansai Regional Office

### Researches on Regional-Specific Issues

- ◎ Supporting food industries throughout the process of products including their safety and the health based on the “Food” as the key rooted on the community.
- ◎ Upgrading the creation of a recycling society taking advantage of the community
- ◎ Formation of alert systems in areas having problems providing average medical treatment by multidimensional assessment

### Mie University Support Programs such as “Mie University Support Project for the Development of the Creative and Advanced Center of Excellence”

To promote our research activities, Mie University carries our research planning, support, and evaluation through the Research Promotion Office.

Mie University provides three programs on campus such as “Mie University Support Project for the Development of the Creative and Advanced Center of Excellence,” “Mie University Support Program for Promoting International Research,” and “Mie University Support Program for Research Development” for the development of research institutes with creativity and advancement and promoting international research to solve international issues as well as upgrading unique and excellent research.

To encourage our research, Mie University offers following supports: allocating research spaces for large projects, supporting young researchers with the Mie University Young Researchers Projects, supporting expenses of distinctive research projects also by faculties or departments.

### Collaborative Research

Mie University encourages interdisciplinary researches beyond the boundaries of courses, faculties and graduate schools, including with other Japanese universities and international collaborative researches. We also conduct a wide variety of cooperative and funded researches and local & regional bodies to contribute to regional revitalization. Research coordinators of Mie University who are working in Community-University Research Cooperation Center Mie TLO Co. Ltd., coordinate joint projects among industry, government and academia match the needs of private companies with University research seeds. We also have thirteen agreements on research cooperation with private banks and other sectors. We aim to promote joint research utilize research results, contribute to local communities, and develop human resources by the collaboration.

### Intellectual Property Creations and Industrial Technology Innovation Institute

The Management Office for Intellectual Property was established to develop and manage the University’s intellectual properties. The office provides educational activities on intellectual property and develops individuals who can handle intellectual property matters. The center also creates intellectual properties and performs activities related to patents. Mie TLO Co. Ltd., transfers patented intellectual properties to private companies.

The Industrial Technology Innovation Institute was established to promote unique research activities and foster creative individuals with advanced professional skills. The Campus Incubator offers a work space for students entrepreneurs who use Mie University Research Seeds to start new venture businesses. In addition, “Developed to Acceptable Business for IPC” is ready to support promising and growing venture businesses.

### Publication of Mie University Research Seeds

Mie University aims to use its intellectual properties to promote cooperative research with local industries. To realize this goal, the Research Seeds of about 500 faculty members are available upon request. (<http://www.crc.mie-u.ac.jp/seeds/>)

### Life Science Research Center

The Life Science Research Center is composed of three units, which include seven departments and five experimental facilities. The center functions to promote education and researches and to comprehensively support various life sciences studied at Mie University and in the regional areas.

#### Functional Genomics Unit

Department of Plant Functional Genomics (Molecular Biology Facilities)  
Department of Animal Functional Genomics (Experimental Animal Facilities)  
Department of Human Functional Genomics  
Department of Bioinformatics

#### Nano-Bio Imaging Unit

Department of Electron Microscope (Electron Microscope Facilities)

#### Radioisotope Research Unit

Department of Radiation Chemistry and Radiation Safety Management (Radioisotope Facilities, Faculty of Medicine)  
(Radioisotope Facilities, Faculty of Bioresources)  
Department of Environmental and Radiation Biology

Mie University contributes to the development to communities and promotes mutual cooperation with them through its education and researches. We support local intellectual services and promote cooperative activities among industries, universities, governments, and citizens.

**Support Organizations**

Community-University Research Cooperation Office, Life Science Research Center, Venture Business Laboratory, and Campus Incubator are at support.

**Coordination of Cooperations**

Community-University Research Cooperation Office, Yokkaichi Community-based Research Network, Iga community-based Research Institute, and Mie TLO Co. Ltd., are cooperating on coordination.

**Local Intellectual Services**

Support citizen intellectual activities through Yokkaichi Community-based Research Network, Iga Cooperation Field, and Iga Community-based Research Institute.

**Links with Society**

Unlimited and origination creation of intellectual for science and technology which can contribute towards society is important to be developed and managed by taking the advantages of education and researches at university. Mie University aggressively conducts collaborative activities with society.

We support “Youth Science Festival,” “Setting Up Mie Regional Bases in Mie University,” culture forums in Iga city and Shima city. We also offer practical learning education such as Community SMEs Problem Solving MOT(Management of Technology) Education Program, Core Competency Development Program, and Bio-medical Entrepreneurship to the public.

Graduate School of Regional Innovation Studies is established in 2009 to foster human resources practically through collaboration activities and to produce core personnel for industrial circle in communities.

In April, 2011, the “Regional Area Strategy Center” was opened as one of the offices in the Community-University Research Cooperation Center. The Center works on giving suggestions and recommendations on issues such as industrial development, regional improvement, tourism policy, and environmental policy for contribution toward society with collaboration between municipalities.

**Grant-in-Aid**

Research promotion by grand-in-aid for cooperative researches in trust, and grants & endowments

**Grant-in-Aid Programs, etc.**

Holding lectures and making research institute

**Collaborative Research Projects with Industry-University-Government**

This is a project for Industry-University-Government and local communities to cooperate and reorganize the industrial structure to encourage the local economy. The part of the project is called “Mie Regional Innovation with Food” and is a project to support the local food industries. We have established the Food Material Search Lab inside the Creative Research & Development Institute.

**Bilateral Cooperation with Municipalities**

Mie University has mutual friendship agreements with municipalities and museums. A disaster prevention cooperation agreement is concluded with Mie Prefecture. We work to develop local industries, utilize historical and cultural assets, create new industries, and undertake research in areas such as welfare, health, urban development and disaster mitigation under these agreements.

**Research for Contribution toward Communities**

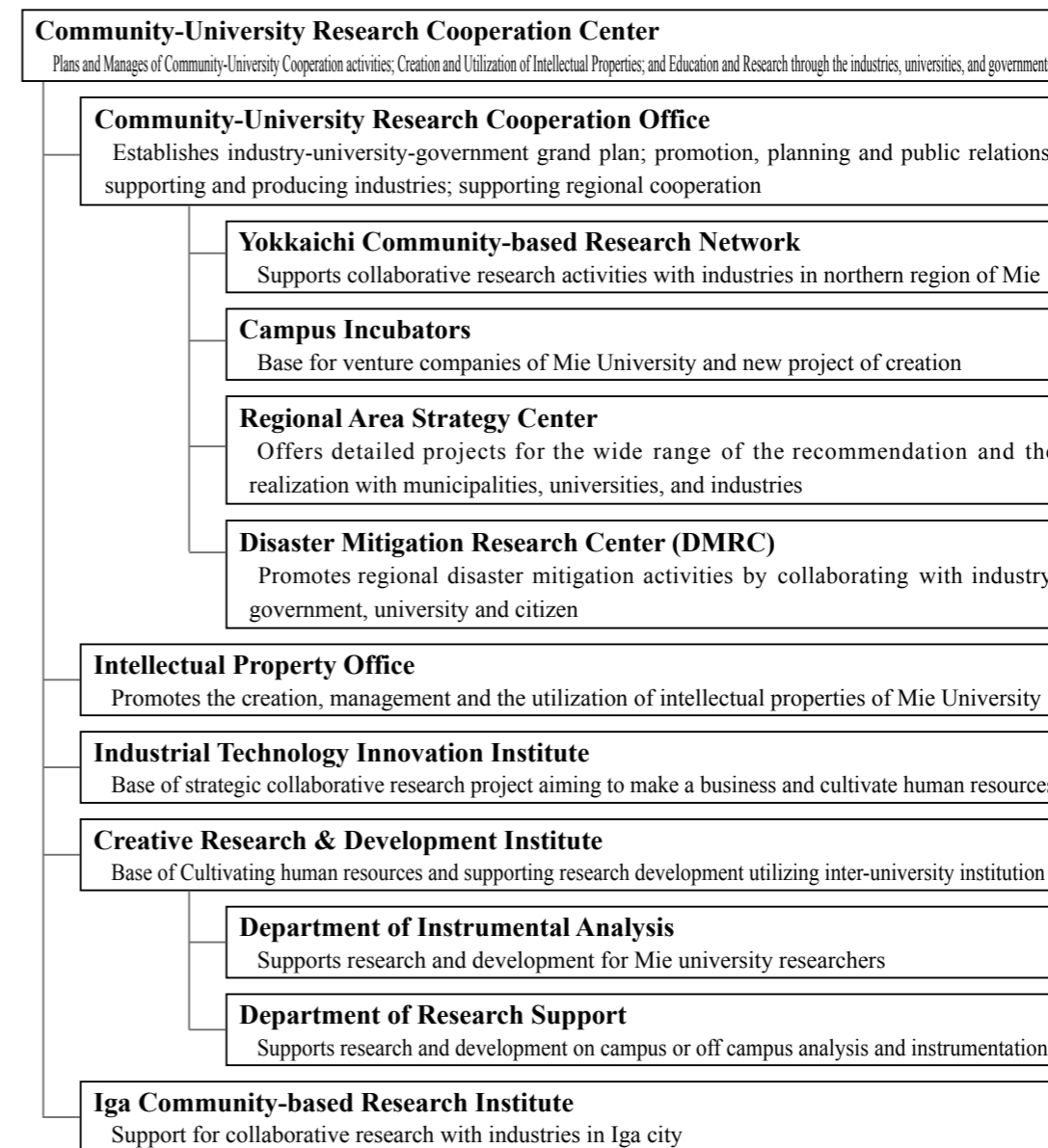
Mie University promotes research on issues relevant to Mie Prefecture, Ise Bay, and Kii Peninsula, and holds symposiums and forums for locals.

We also work on activities based on education and researches handled by our faculty and staff members for the purpose of creation and promotion of regional creation and promotion activities by Mie University.

**Community-University Research Cooperation Center**

The Community-University Research Cooperation Center aims to deepen cooperation among industry, government, and university to utilize intellectual property of Mie University and to promote distinctive research and development. The Center focuses on contribution to research and education by Mie University, and also for the enhancement of industries, culture, and welfare services of Japan and local communities.

**Structure and the Outline**



**Public Relations Office**

We offer news about our innovation, research results and information, and hot news inside our university through Mie University website, and PR magazines.

Management and operation of Mie University Website and press release

Publication of magazines (Mie University Outline-1/year, Wave Mie Univ.-1/year, Mie Univ. X- 2/year, Flash News-Every month , Mail Magazine-Every month)

**Extension Courses**

Mie University provides communities with access to education and research results through various programs as a university open to society.

**Open Classes for Public**

To strengthen cooperation with the community by social needs for lifelong learning, we opened some of the classes to public from 2009 so that people in this area and students can study together.

Mie University is promoting internationalization and enhancing international education and collaborative research activities to form global human resources rooted in the community. Furthermore, we expand cooperation with society and international exchanges with universities all over the world.

### Center for International Education and Research: CIER

CIER, the Center for International Education and Research, was inaugurated on October 1, 2005, as a special facility for research and education. The aim of the CIER was to become the heart of internationalization in Mie University. Currently, our partnership has expanded to 86 universities in 32 countries, conducting mutual exchange activities and international collaborative research.

#### Japanese Language and Culture Education for International Students

At the Center for International Education and Research in Mie University, we provide Japanese language and culture education classes for all international students. There are five different levels ranging from beginner through advanced according to the student's needs and abilities. An intensive Japanese course is also offered for beginners and intermediate students during a six-month period. Also, some of the courses in Japanese language for beginning and intermediate levels have been offered for the general public since 2009.



### International Career Development Program

For the development and the nurturing of international personnel, we offer six programs.

- (1) Foreign Language Program:** Students have opportunities to participate in foreign language programs at our partnership universities such as Seattle Pacific University in the USA and the University of Tasmania in Australia for English, Friedrich-Alexander-Universitat-Erlangen-Nurnberg in Germany for German, and Tianjin Normal University in China for Chinese.
- (2) International Education Program:** We offer courses for both Japanese and international students: a) enhancement of communication skill in English; b) deepening cross-cultural understanding with international and Japanese students; c) participation in the International Internship Program and the Tri-University International Joint Seminar & Symposium; and d) preparation courses in Liberal Arts Education and special courses in the CIER for students to study abroad.
- (3) Short Programs for International Education:** These programs offer students opportunity to participate in classes, engaging in cross-cultural exchanges at partnership universities in Indonesia, the Republic of Korea, Thailand, and Vietnam.
- (4) International Internship Program:** We offer students opportunity to integrate career related experience into an undergraduate education by participating in planned, supervised work at partner universities in Malaysia, the Republic of Korea, Thailand and Viet Nam.
- (5) Tri-University International Joint Seminar & Symposium:** This is an academic seminar for students to enhance their international experiences, which is held every year at one of the three founder universities (Mie University, Chiang Mai University in Thailand, and Jiangsu University in China) in turn since 1994. Bogor Agricultural University was newly added as one of the host universities from 2011. At the conference, students from invited universities present their research papers in English on the themes of "Population, Food, Energy, and Environment."
- (6) Double Degree Program:** Mie University has established an educational collaboration program with overseas partner universities, making it possible to award a bachelor's degree from both Tianjin Normal University in China and Mie University, and also to award a Master's degree from Sriwijaya University and Universitas Padjadjaran in Indonesia and Mie University.



### National University Project of Promotion for Reform and Strengthening

Mie University collaborates with Nagoya University and Aichi University of Education to carry out the "Project for Accelerating Internationalization by Fostering Global Personnel in Asia with University Collaboration"; this project was adopted as the "National University Project of Promotion for Reform and Strengthening 2012" by the Ministry of Education, Culture, Sports, Science and Technology. Through this project, we promote accepting international students and sending Japanese students out collaborating with the three universities. We make effective use of our overseas centers for education and research to develop and implement experience-based educational programs. Responding to the requirements of the present society, in which the government and economy are linked to global events, we aim for fostering leaders to solve difficult issues in Asia and throughout the world.

### Overseas Studies and International Student Support

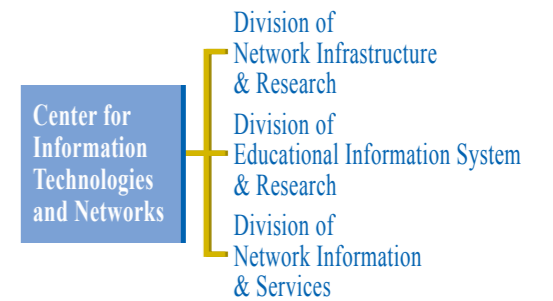
- (1) Scholarship Programs:** We offer scholarship for students with outstanding academic results to study abroad, to participate in international programs including short programs with partner universities, and to participate in the Double Degree Programs. In addition, we support international students living in Japan to study by waving entrance fee and tuition for excellent international students from our partnership universities. Furthermore, we provide information about scholarships from Ministry of Education, Japan Student Support Organization and private foundations.
- (2) International Student Support:** We offer support for the implementation of international exchange activities, the living of international students in Japan, participation in regional activities, and Japanese language education, through collaboration with the Center for International Education and Student Support Center. Furthermore, we support international students in finding careers after graduation by introducing them to the private sectors in the region.



We strive for the improvement and reinforcement of Academic Information Infrastructure which Mie University plays a role as a Center of Electronic Information.

### Center for Information Technologies and Networks

Center for Information Technologies and Networks is composed of three divisions; Division of Network Infrastructure & Research, Division of Educational Information System & Research, Division of Network Information & Services. It manages and develops the information systems of Mie University.



### Network Infrastructure

Network Infrastructure division provides high-speed network system which is essential to smooth educational activities and office works.

### Information Services

Information Services division consolidates the management of accounts for faculty, staff, and students as "Unified-account," which is used for electric programs inside Mie University. In addition, it holds several useful license agreements for software such as "Microsoft Office Personal Plus," and they are available for faculty, staff and students of Mie University.

### Educational Support

Educational Support division opened several computer rooms for lectures and self-study. In addition, it manages e-learning systems such as "Mie University Moodle" and "Language e-learning system." Faculty and students can confirm news about lectures by cell phone, home PC, and the intramural bulletin board system.

### Information Education

For incoming students of all faculties, Information Education division provides lectures, "Information Literacy" to learn how to use information system of Mie University and "Information Logics" to learn IT-related ethics and manners.



The University Library was renovated on March 2013. Tri-functions of “Research Support,” “Study & Educational Support,” and “Regional Contribution” are the service objectives. Mie University collects and offers a wide range of academic information needed for researches, education, and study. The Laboratory of Regional Studies is also set and works on the advancement of Library services.

## University Library



The Exterior of the Library



1<sup>st</sup> Floor “Commons Area”

### Mie University Library

#### Electronic Journals & Database

About 10,000 electronic journal titles by major publishers and aggregators such as Elsevier and Springer are accessible 24 hours a day from computers connected to the internal LAN.

We also introduce reference cited database and research information database such as “Web of Science” and “SciFinder Scholar” and encourage research infrastructure improvements.

#### Educational Environment & Support for Information Literacy Education

We strive to create a better educational environment by offering books and journals such as books on the list of syllabus and needed for study, seats in a quiet atmosphere which students can concentrate on their studies, and more than 60 computers with Internet connection. Furthermore, we tie-up with classes and frequently hold lectures for OPAC, how to search useful information from various kinds of databases, how to write reports, and presentation. In this way, we support study positively.

#### Regional Contribution

Mie University Library allows general public access to academic documents of Mie University, holds symposiums based on them, and provides academic information to related organizations such as libraries in Mie prefecture.

Deliverables from researches and studies of Mie University are saved and stored, to provide Institute Repository and the digital archives of the history and the culture of Mie Prefecture; Saiku to Ise & Kumanokodo, the world heritage.

#### Laboratory of Regional Studies

Laboratory of Regional Studies focuses on the research and development of providing conservation for record materials and advancement of information library. We offer information of the achievement from our researches collaborated with libraries and museums in the region as an intellectual center.

### Mie Environmental & Informational Platform (MEIPL)

#### “MEIPL” opened in April, 2012



Mie Environmental & Informational Platform (MEIPL)

MEIPL is one of the academic commons\* connected with the University Library to offer common space for students to create new ideas.

In addition, we aim to establish Mie University as the most environmentally advanced university in the world as well as most contribution to society. We opened the MEIPL to offer information about our environmental education and research.

On the first floor, there is an exhibition hall that offers information on environmental education and research results and a space community exchange. There is an open “Learning Commons” places on the second floor and a “Teaching Commons” on the third floor connected with each other by a hallway to provide classrooms for PBL education.

\*Academic commons are places to share their knowledge by exchanging various information collaborating with each other.

#### 2<sup>nd</sup> Floor, Open Space for Students to Use Freely



2<sup>nd</sup> Floor “Learning Commons”

On the second floor, there are facilities (such as mobile chairs, tables, whiteboards, and bookshelves) for the students to share information as well as to encourage freewheeling thinking and creativity.

At the PC station, students can access the necessary resources and analyze and organize the information. In addition, there are “PBL Seminar Rooms” and “Social Spaces” for students to relax and talk with their friends.

#### New-style Classes for Lectures and Seminars



3<sup>rd</sup> Floor, PBL Seminar Room

Open-space classrooms without walls on one side provide a motivating atmosphere while also maintaining privacy during classes. Using mobile chairs and tables, class can be held in a variety of styles. Completely enclosed classrooms offer a smaller area for problem-based learning classes using new technology. In addition, there is a space for “Teaching Commons.”

Mie University aims to establish itself as the most environmentally advanced university in the world implementing Mie University original environmental education, environmental research activities, social contribution responding to regional needs, and efficient management system. We are reducing CO<sub>2</sub> emissions by 30% below the 1990 level by 2020, expanding our aim to make our campus more environmentally advanced by establishing a circulating system of recycling: 3R activity, and collaborating with industry, government, university and citizens for co-existence of nature and mankind.

**Center for Environmental Management and Enhancement (CEME)**

The Center for Environmental Management and Enhancement was set up on campus in April, 2011, aiming at the promotion of environmental activities of Mie University. CEME promotes further education, research, social contribution, and efficient management system based on Mie University Environmental Policy.

**Environmental Education**

**(1) Education for Sustainable Development (ESD)**

By taking advantage of a variety of environmental resources through our unique “Education for Sustainable Development” program, Mie University provides effective instruction to students and develops highly successful personnel whose achievements are recognized in the global environmental field. In the program, students who earn 10 credits are awarded the certificate for environment by the president of Mie University. Those who complete the program become environmental leaders of Mie University, participating in the Environmental ISO Student Committee and the Internal Auditing Committee for Environment.



Certificate for Education for Sustainable Development Program

**(2) UNESCO Associated Schools Project Network (ASPnet)**

We provide students with an education in a variety of areas, such as Environment, Energy, Disaster Mitigation, Biodiversity, Climate Change, World Heritage and Culture, and International Understanding as a part of the Education for Sustainable Development (ESD), aiming at the development of the environment, economy, and society. In addition, Mie University strives for globalization by expanding UNESCO Associated Schools activities and support by collaborating with the Mie Prefectural Office, municipalities, the National Federation of UNESCO Associations, NPO’s, and other sectors. In anticipation of the UNESCO World Conference on Education for Sustainable Development to be held in Nagoya, Aichi Prefecture in 2014, the Asia-Pacific Universities Environmental Consortium will design and implement “ESD in Mie.”

**Certification for Environmental International Standards ISO14001 (Environmental Management System Establishment/ Management)**

On November 19, 2007, Mie University was granted the certification for ISO14001, Environmental International Standards. This international standard was established for the purpose of minimizing organizational activities’ effects on the environment. Mie University is the first university in Japan to be granted the certificate to a whole university. In addition, we aggressively conduct environmental activities which help control the negative effect on environment while developing personnel to work on environmental issues to fulfill our social responsibilities.

**3R Activities (Reduce/Reuse/Recycle)**

**• Reduce: Reducing Plastic Shopping Bags in Coop**

From January 1, 2008, Coop has started to charge for plastic bags at the cashier. In addition, the very first convenience store giving no plastic bags in Japan was opened on the Mie University Campus in October, 2009.

**• Reuse: Reusing Illegally Parked Bicycle**

We have been repairing bicycles left on campus since 2007 and giving them out to incoming students. In addition, we started to collecting used electric appliances in 2009. Those used bicycles and electric appliances were given out to international students and incoming students.

**• Recycle: Recycle Used Papers**

Since 2007, we have collected used papers and recycled them into Mie University’s original toilet paper rolls. About 20% to 30% of them are provided for use inside Mie University.

**Clean Activity on Machiya Sandy Beach and Biodiversity Preservation Activity Cooperating with Industry, Government, University and Citizens**

Collaborating with Mie University faculty, staff members, ISO Student Committee members, citizens: Machiya-hyakunin-syu, private sectors: Toyota, Chubu Electric Power Co., government, elementary schools and junior high schools in Tsu, we work on cleaning activities five times a year on Machiya Sandy Beach neighboring Mie University campus. In addition, we provide environmental education and implement biodiversity preservation activities by holding seaside tours to call attention to plants such as ixeris repens, which is designated as one of the pre-endangered species in Mie Prefecture.



Clean Activity on Machiya Sandy Beach

**Mie Environmental and Informational Platform (MEIPL)**

According to the Comprehensive Assessment System for Built Environment (CASBEE), this building has been classified as “S” (the highest grade for building efficiency based on its simplified criteria). This is an environmentally friendly building considering energy saving and the effective utilization of resources as well as comfort and aesthetics. MEIPL is a central point for bringing together environmental education, environmental-research results, and environmental activities of the area.

**Smart Campus Project**

Mie University strives for reducing CO<sub>2</sub> discharged on campus by utilizing energy in the community effectively, and we are the first university to conduct this project among universities in Japan. We aim to reduce CO<sub>2</sub> emissions by 24% below the 2010 level. In addition, we have a power generator facility which can supply electricity in times of disaster.

**(1) Campus Energy Management**

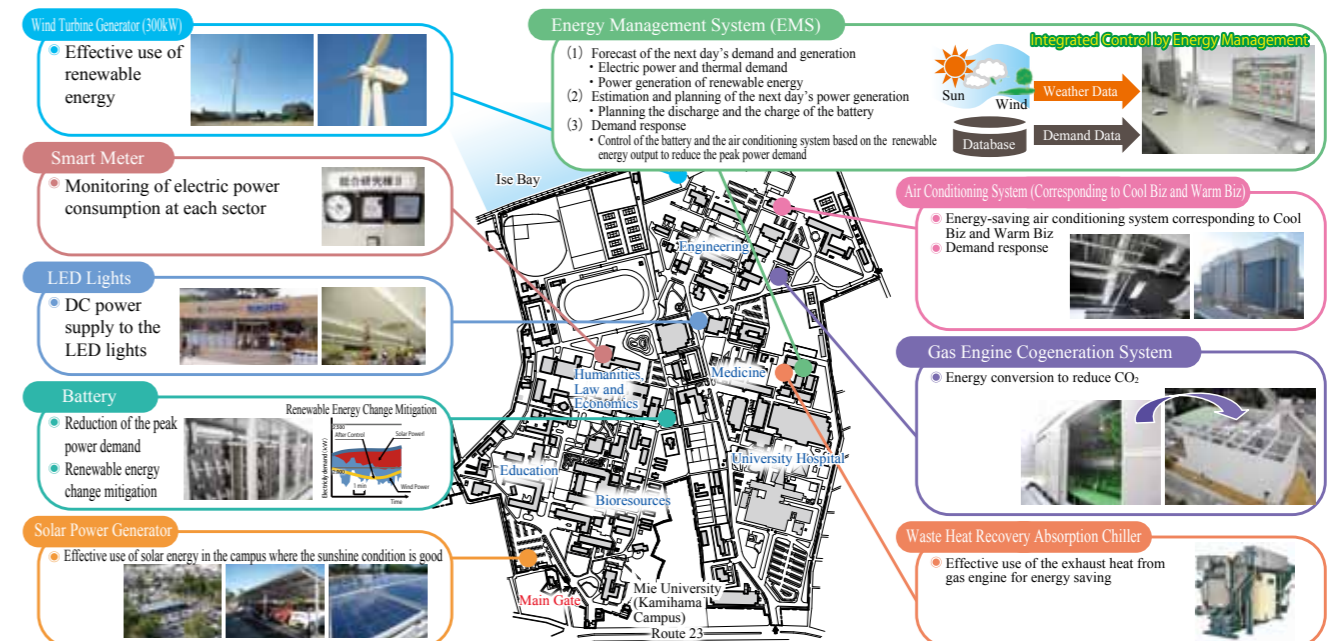
We make an effort to ease the pressure on rising electricity use cutting peak energy demand to reduce CO<sub>2</sub> by 24%. (compared with the 2010 result)

**(2) Disaster Prevention Facility**

When disasters occur, we supply stable power by utilizing recyclable energy, even if the energy infrastructure such as electricity and gas is cut off.

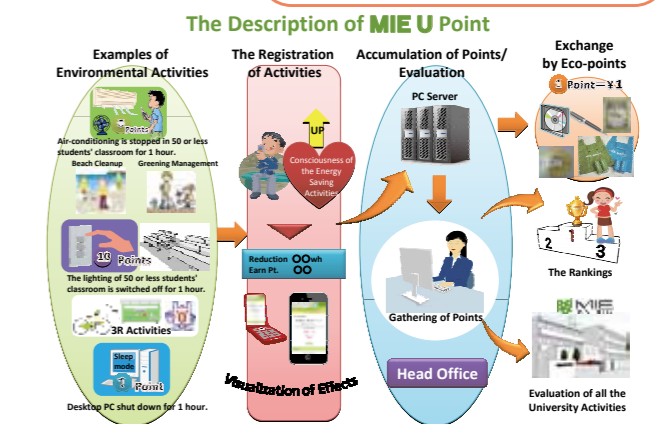
**(3) Efficient Utilization of the Results**

We made a guideline from our results, which is applicable for other universities and operation facilities.



**Mie U Point**

As part of our efforts on environmental activities, students and faculty can register Eco-points using Mie University Moodle or their own mobile systems. To keep these environmental activities sustainable, those who achieved outstanding results may get a commendation from the President. In addition, those points may be used for to enjoy shopping on campus.



Mie University was granted the “The Prize of Containers and Packaging 3R” by the Minister of the Environment in January, 2009, “Environmental Management Pearl Award” for the environmental management competition in June, 2010, and the first prize for the Eco-Friendly University in the second national and public university competition in November, 2010. In addition, we received “The 1st Mie Environmental Award” in December, 2012, and Fujisankei Communications Group (FCG) sponsored “The Grand Prize for the Global Environment Award” in April, 2013.

## Mission and Principles of Mie University Hospital

- 1 Patient-Focused Care  
We adhere to follow a strict ethical code and provide patients reliable and satisfied care with the highest and the best medical care.
- 2 Contribution to the Community and to the World  
We offer medical contribution toward the community and provide beneficial medical exchanges to the world.
- 3 Clinical Study and Cultivation of Human Resources  
We advance clinical study and cultivate medical professionals who can lead to the future generation of medicine.



The hospital will develop and maintain excellent staff members and provide challenging job opportunities.

### Providing High Quality Medical Care

To provide high quality medical care, standardized safe and secure diagnosis and treatment must be ensured. An integrative checking system by the Department for Patient Safety is established for medical treatment and care given at the hospital. The Committee on Quality and Ethics in Medicine, including outside members, assesses the validity of the hospital's medical services.

### Training Skilled Medical Specialists

The hospital will establish the medical specialist education curriculum, aiming to offer more improved medical services.

### Developing New Medical Technologies

The hospital will enhance the quality of facilities such as the Research and Development Center for Clinical Medicine and train specialists in advanced medicine and clinical trial fields. The hospital will establish a facility to research disease rates and assess appropriate numbers of doctors in Mie Prefecture.

### Contributing to Community Health

The hospital plays the central role in cooperating with affiliated hospitals in Mie Prefecture. It assists and cooperates the hospitals in remote local areas by sending the medical training staff for improvement of medical services.

### New University Hospital Wards opened.

The present Mie University Hospital has existed for a long time and is getting old. The first stage of the New University Hospital Wards with advanced information systems and facilities to meet the latest medical situations was completed in January, 2012. The second stage of the construction for the new wards and the outpatient wings will follow.



New University Hospital

## Floor Information for New Hospital & Wards

Roof: Heliport	
12F	○Restaurant ○San-i-kai Hall
11F	○North Ward: Hematology and Oncology, Ophthalmology ○South Ward: Oncology, Dermatology, Ophthalmology
10F	○North Ward: Cardiology, Nephrology, General Medicine, Diabetes and Endocrinology ○South Ward: Cardiovascular Surgery, Thoracic Surgery, Pulmonary
9F	○North Ward: Gastroenterological Surgery, Gastroenterology and Hepatology ○South Ward: Hepato Pancreato Biliary Surgery, Gastroenterology and Hepatology
8F	○North Ward: Orthopedic Surgery, Interventional Radiology, Diagnostic Radiology, Radiation Therapy ○South Ward: Neurosurgery, Neurology
7F	○North Ward: Gynecology, Breast Surgery ○South Ward: Maternity and Perinatal Care Center
6F	○North Ward: Nephro-Urologic Surgery, Dentistry and Oral Surgery ○South Ward: Pediatrics, Pediatric Surgery, Pediatric Cardiosurgery, Cell Transplantation Therapy Center
5F	○North Ward: Otorhinolaryngology-Head and Neck Surgery ○South Ward: Psychiatry, RI Ward/Small Sealed Treatment
(Facility Management Floor)	
3F	○Central Laboratory (Emergency Laboratory) ○Division of Blood Transfusion ○Pathology Division ○Clinical Engineering ○Central Supply Division ○Central Operating Division (Operation Theater) ○Division of Clinical Anesthesia
2F	○Hemodialysis Unit (Analysis Center) ○Division of Endoscopic Diagnostics and Therapeutics (Endoscope Laboratory) ○Central Radiology Division (CT/MRI/Angiography) ○Intensive Care Center
1F	○Central Radiology Division (RI Laboratory) ○Division of Pharmacy ○Emergency and Critical Care Center (Emergency Outpatient Unit) ○Department of Nutrition (Kitchen) ○Registration Counter ○Overtime Counter/Disaster Control Center ○Relaxation and Resting Area ○Shops ○Barber/Hair Salon

**A Hospital for Patients**  
This hospital provides heartwarming services as well as secure and safe treatment in an excellent environment. Most of the rooms are set for four people and about 30% of the rooms are individual rooms. We provide protection of privacy and also an environment to use IT devices safely.

**B A Hospital to Provide Cutting-edge Medical Treatment**  
We provide cutting-edge medical treatment to our patients as the only advanced treatment hospital in Mie Prefecture. We offer advanced treatment for cancer, transplantation therapy, and endovascular treatment.

**C A Hospital for Nurturing Personnel for the New Generation**  
We provide education for nurturing reliable and quality doctors in the community. We also provide education for nurses, pharmacists, laboratory technicians, and medical processors.

**D A Hospital Offering an Excellent Work Environment**  
At this hospital, everyone can enjoy working cooperatively with each other. We provide advanced amenities such as a security system for protection, conference rooms on each floor, and rooms with a shower booth for staff on duty.

**E A Hospital with Advantages of Location**  
Among national university hospitals, only Mie University Hospital is located along the coastline. Ise bay lies to the east and the Suzuka mountains lie to the west. In this comfortable atmosphere, patients can enjoy the beautiful ocean view while receiving treatment.

**“Clinical Training and Career Support Center” for the Productive Education after Graduation**

**Three elevators available for staff members separated by cleanness**

**Helicopter for Doctor Helicopter and Helicopters for Disaster on the Roof**

**Female Wards and Children Wards Available**

**Restaurant with Excellent Ocean View**

**Specialized and special outpatient clinics are placed effectively in bright and spacious waiting space.**

**Wide Main Street**

**Three Elevators for Patients and Visitation**

**Triangular-shaped Hospital Ward with Transfer Efficiency**

**Hospital Wards are divided by Organs not by Department**

**“Intensive Care Center” with ICU and HCU**

**Main Entrance**

**Outpatient/Clinical Wards (will be opened in 2014)**

**Hospital Wards/Clinical Wards (opened in January, 2012)**

**Emergency Entrance**

**Library for Patients**

**“Medical Welfare Support Center” for the Consulting with Patients and the Families**

**“Disaster Control Center” for Keeping the Security in the Hospital**

**“Emergency and Critical Care Center” for Patients in Critical Condition**

## University Library

### User Statistics (2012 Academic Year)

Total Number of Visitors		191,376
Number of Borrowers	Undergraduates	33,154
	Graduates	4,204
	Faculty & Staff Members	2,896
	Others	850
Volumes Lent	Undergraduates	54,679
	Graduates	9,166
	Faculty & Staff Members	8,416
	Others (including emerituses and retired teaching staff)	2,240
Photocopying		
Request from Outside	1,154	
Request to Outside	3,540	
Interlibrary Loan		
Lent	736	
Borrowed	561	

### Library Holdings As of March 31, 2013

Classification	Japanese Books	Foreign Books	Total
General Works	39,275	7,723	46,998
Philosophy	37,073	9,999	47,072
History	54,218	5,555	59,773
Social Science	153,434	21,352	174,786
Natural Science	126,589	46,254	172,843
Technology	56,187	15,424	71,611
Industry	52,207	9,800	62,007
Fine Arts	28,422	2,715	31,137
Language	24,594	10,558	35,152
Literature	56,759	18,330	75,089
Periodicals	76,663	83,630	160,293
<b>Total</b>	<b>705,421</b>	<b>231,340</b>	<b>936,761</b>

### User Statistics (Non-University Patrons 2012 Academic Year)

User Statistics	
Number of Registered	297
Volumes Lent	2,111
Number of Visitors	5,237

### Positional Details of Registered

Number of Registered	
University Students	63
Academic Researchers	14
Non-Academic Researchers	13
General Public	207

### Academic Publication (2012)

Faculty	Title of Publication	Number of Copies	Publication Frequency (Per Year)
Faculty of Humanities, Law and Economics	Jinbun Ronso	400	Yearly
	TRIO: Culture, Society and Nature in Mie	2,000	Yearly
Faculty of Education	Bulletin of the Faculty of Education, Mie University	550	Yearly
	Report of the Integrated Center for Educational Research and Practice, Mie University	600	Yearly
Faculty of Medicine	Mie Nursing Journal	120	Yearly
Faculty of Engineering	Research Report of the Faculty of Engineering, Mie University	Available only on the web	Yearly
Faculty of Bioresources	Bulletin of the Graduate School of Bioresources, Mie University	900	Yearly
	Annals of Field Research and Technology, Mie University	300	Yearly
Graduate School of Regional Innovation Studies	Proceedings of the International Workshop on Regional Innovation Studies	300	Yearly

## University Hospital

### Clinics

Clinics	Number of Beds	Number of Patients (2012 Academic Year)			
		Inpatients		Outpatients	
		Total Visits	Per Day	Total Visits	Per Day
Hematology and Oncology	26	8,988	24.6	6,270	25.6
Oncology	15	5,435	14.9	5,898	24.1
Dermatology	23	7,084	19.4	15,899	64.9
Ophthalmology	28	8,466	23.2	30,071	122.7
Cardiovascular Surgery (Pediatric Cardiology and Cardiac Surgery)	20	6,097	16.7	4,732	19.3
Thoracic Surgery	8	2,964	8.1	1,439	5.9
Pulmonary	22	7,263	19.9	12,855	52.5
Diabetes and Endocrinology	6	1,952	5.3	10,260	41.9
Cardiology	31	9,671	26.5	17,145	70.0
Nephrology	8	3,145	8.6	5,822	23.7
General Medicine	2	1,578	4.3	45	0.2
Hepato Pancreato Biliary Surgery	37	12,780	35.0	5,192	21.2
Gastroenterological Surgery	37	12,583	34.5	7,752	31.6
Pediatric Surgery	5	2,202	6.0	1,960	8.0
Gastroenterology and Hepatology	37	11,926	32.7	15,083	61.5
Neurosurgery	24	7,902	21.6	6,523	26.6
Neurology	20	6,466	17.7	9,171	37.4

\* Number of beds as of June 1, 2013

\* Total number of patients for Intensive Care Center shows only numbers of patients at the emergency department.

\* Total number and the average of patients per day are based on the business day of 245 days.

### Clinics (2012 Academic Year)

Clinics	Number of Beds	Number of Patients (2012 Academic Year)			
		Inpatients		Outpatients	
		Total Visits	Per Day	Total Visits	Per Day
Orthopedic Surgery	35	11,860	32.5	16,511	67.4
Diagnostic Radiology	16	725	2.0	1,014	4.1
Radiation Therapy		0	0	5,096	20.8
Interventional Radiology		4,347	11.9	1,949	7.9
Gynecology	32	11,762	32.2	15,361	62.7
Breast Surgery	9	2,614	7.2	10,489	42.8
Pediatrics (Pediatric Cardiology and Cardiac Surgery)	25	7,920	21.7	5,286	21.6
Nephro-Urologic Surgery	29	9,869	27.1	14,422	58.9
Dentistry and Oral Surgery	14	4,809	13.2	22,608	92.3
Psychiatry	30	9,015	24.7	18,460	75.4
Otorhinolaryngology-Head & Neck Surgery	35	12,656	34.7	15,445	63.0
Anesthesiology	0	0	0	6,029	24.6
Family Medicine	0	0	0	5,091	20.8
ICU (Emergency Medicine)	22	2,502	6.9	526	2.2
Maternity and Perinatal Care Center	45	15,101	41.4	0	0.0
Health Care Center	0	0	0	487	2.0
Common Beds	44				
<b>Total</b>	<b>685</b>	<b>209,682</b>	<b>574.5</b>	<b>294,891</b>	<b>1,203.6</b>

### Clinical Facilities (As of June 1, 2013)

- Division of Pharmacy
- Central Laboratory
- Central Operating Division
- Division of Clinical Anesthesia
- Central Radiology Division
- Central Supply Division
- Emergency and Critical Care Center
- Division of Blood Transfusion
- Maternity and Perinatal Center
- Intensive Care Unit
- Medical Information Control Center
- Pathology Division
- Division of Endoscopic Diagnostics and Therapeutics
- Hemodialysis Unit
- Medical Welfare Support Center
- Rehabilitation Division
- Division of Transplantation Therapy Center
- Department of Nutrition
- Clinical Training and Career Support Center
- Division of Personalized Medicine
- Clinical Research Support Center
- Department of Patient Safety and Infection Control
- Clinical Engineering
- Cancer Center
- Breast Center
- Examination Center
- Hepatitis Support Center
- Chemo Therapy Clinic
- Ai Center
- Information Technology and Public Relations Center
- Organ Transplantation Center
- Blood Treatment Center
- CCU Network Support Center
- Epidemiology Center for Disease Control and Prevention
- Oral Care Center
- Center for Disaster Medicine

## Welfare Facilities

### Welfare Facilities

Name	Total Floor Space (m <sup>2</sup> )	Capacity
Center for Physical & Mental Health	549	
Cafeteria 1	1,248	750
Cafeteria 2	1,012	296
Suiryo-Kaikan (Student Hall)	1,762	75 (Dining Hall)

(As of May 1, 2103)

### Dormitories

Name	Total Floor Space (m <sup>2</sup> )	Capacity
Anotsu-Ryo (Men's Dormitory)	3,851	109
Seiwa-Ryo (Women's Dormitory)	1,245	60
Omi-Ryo (Women's Dormitory for International Students)	2,137	75 (Japanese Students 50 Foreign Students 25)
University Foreign Students' House	1,221	Single Rooms 30 Couple Rooms 5
Foreign Students' Dormitory	1,524	84

(As of May 1, 2013)

### Athletic Facilities and Facilities for Extracurricular Activities

Name	Floor Space/Number	Name	Floor Space/Number
First Gymnasium	Floor, etc.	Kyudo Gymnasium (6 persons can simultaneously shoot)	396m <sup>2</sup>
	Judo Hall	Second Kyudo Gymnasium (8 persons can simultaneously shoot)	360m <sup>2</sup>
	Kendo Hall	Equestrian Area and Stables	5,030m <sup>2</sup>
Second Gymnasium	Floor, etc.	Archery Field	3,849m <sup>2</sup>
	Judo Hall	Handball Field	4,603m <sup>2</sup>
	Karatedo Hall	Boat House	223m <sup>2</sup>
Indoor Training Center	733m <sup>2</sup>	Garage for Car Clubs	100m <sup>2</sup>
Outdoor Track and Field (Officially approved 400 m track)	23,001m <sup>2</sup>	Facilities for Extracurricular Cultural Activities	480m <sup>2</sup>
Baseball Stadium	1	Campus Lodging Facilities for Extracurricular Activities	198m <sup>2</sup>
Soccer and Rugby Field	1	Facilities for Extracurricular Cultural Activities	352m <sup>2</sup>
Tennis Courts	10	Facilities for Extracurricular Sports	174m <sup>2</sup>
Second Sports Field	153m <sup>2</sup>	Shower Room	19m <sup>2</sup>
Swimming Pool (50 m long, 8 courses)	2,328m <sup>2</sup>	Field Managing Office	120m <sup>2</sup>

(As of May 1, 2013)

## Land and Buildings

As of May 1, 2013

Districts	Divisions	Area m <sup>2</sup>	Building m <sup>2</sup>	Districts	Divisions	Area m <sup>2</sup>	Building m <sup>2</sup>	
Kan'nonji	Administration Bureau		4,230	Kan'nonji	Kindergarten		953	
	Special Facilities for Research and Education		13,060		Primary School		5,977	
	Center for Physical & Mental Health	549			Junior High School	3,403	5,728	
	University Library	10,411			Mentally Challenged Children's School	* 91,824	3,509	
	Liberal Arts Center	12,850			University Housing		2,303	
	Faculty of Humanities, Law and Economics	5,295			<b>Total</b>	<b>3,403</b>	<b>18,470</b>	
	Faculty of Education	15,407				<b>* 91,824</b>		
	Integrated Center for Educational Research and Practice	790			Others	Kii-Kuroshio Bio-Regional		
	Faculty of Medicine	33,842				Field Science Center		
	University Hospital	78,722				Farm Station	353,179	7,911
Faculty of Engineering	29,741	528,040	Forest Station	4,569,562		1,421		
Faculty of Bioresources	32,811		Fishery Research Station	35,649		1,120		
Gymnasiums	6,421		Training Ship Base	1,356		574		
Auditorium (Sansui Hall)	4,084		Boat House	* 241		223		
Foreign Teachers' Quarters	436		Men's Dormitory	7,966		3,851		
University Housing	1,331		University Housing	12,537		8,535		
Women's Dormitory	3,382		<b>Total</b>	<b>4,980,249</b>		<b>23,635</b>		
Foreign Students' House	1,221			<b>* 241</b>				
Foreign Students' Dormitory	1,524							
Special Facilities for Common Use	16,827							
Others	6,280							
<b>Total</b>		<b>528,040</b>	<b>279,214</b>	<b>Grand Total</b>		<b>5,511,692</b>	<b>321,319</b>	

\* indicates leased lands

### Training Ship "SEISUI MARU"

Length (O.A.)	50.90 m	Diesel Engine 1,300PS	1 engine
Breadth (MLD)	8.60 m	Speed	12.0 Kt
Depth (MLD)	3.75 m	Complement (Capacity)	44 people
Gross Tonnage	318 t	Built	January 30, 2009

(As of May 1, 2013)



## Numbers of 2013 Applicants and Entrants

Classification	Admission Capacity	Applicants			Examinees			Entrants				
		Male	Female	Total	Male	Female	Total	Male	Female	Total		
Faculties	Humanities, Law and Economics	265	(13) 554	(14) 680	(27) 1,234	(13) 376	(14) 469	(27) 845	(1) 123	(2) 169	(3) 292	
	Education	200	(4) 497	(6) 690	(10) 1,187	(4) 373	(5) 572	(9) 945	(2) 93	(2) 122	(2) 215	
	Medicine	205	594	549	1,143	306	313	619	88	117	205	
	Engineering	400	(42) 1,932	(8) 227	(50) 2,159	(39) 1,410	(8) 162	(47) 1,572	(6) 378	(1) 40	(7) 418	
	Bioresources	240	501	387	888	413	321	734	158	105	263	
	<b>Grand Total</b>	<b>1,310</b>	<b>(59) 4,078</b>	<b>(28) 2,533</b>	<b>(87) 6,611</b>	<b>(56) 2,878</b>	<b>(27) 1,837</b>	<b>(83) 4,715</b>	<b>(7) 840</b>	<b>(5) 553</b>	<b>(12) 1,393</b>	
Graduate Schools	Humanities and Social Sciences (Master Course)	15	(5) 13	(5) 9	(10) 22	(5) 13	(5) 8	(10) 21	(3) 8	(4) 7	(7) 15	
	Education (Master Course)	41	(2) 27	(11) 36	(13) 63	(2) 26	(11) 35	(13) 61	(7) 18	(7) 22	(7) 40	
	Medicine	Master Course	31	10	20	30	10	20	30	8	16	24
		Doctoral Course	45	32	15	47	32	14	46	31	14	45
	Engineering (Doctoral Course)	Master Program	216	(4) 246	(2) 33	(6) 279	(4) 243	(2) 31	(6) 274	(2) 202	(2) 28	(4) 230
		Doctoral Program	16	(3) 10	(3) 2	(3) 12	(3) 10	(3) 2	(3) 12	(3) 10	(3) 2	(3) 12
	Bioresources (Doctoral Course)	Master Program	88	(9) 87	(8) 43	(17) 130	(9) 85	(8) 41	(17) 126	(9) 70	(6) 29	(15) 99
		Doctoral Program	12	(1) 6	(1) 3	(2) 9	(1) 6	(1) 3	(2) 9	(1) 6	(1) 3	(2) 9
	Regional Innovation Studies (Doctoral Course)	Master Program	10	13	3	16	12	3	15	9	3	12
		Doctoral Program	5	6	0	6	6	0	6	6	0	6
<b>Grand Total</b>	<b>479</b>	<b>(24) 450</b>	<b>(27) 164</b>	<b>(51) 614</b>	<b>(24) 443</b>	<b>(27) 157</b>	<b>(51) 600</b>	<b>(18) 368</b>	<b>(20) 124</b>	<b>(38) 492</b>		
One-Year Graduate Course	Special Support Education	30	2	7	9	2	6	8	1	3	4	

The numbers in parentheses represent the numbers of international students.

\*Asterisk represents the number of the international students though Malaysia Government.

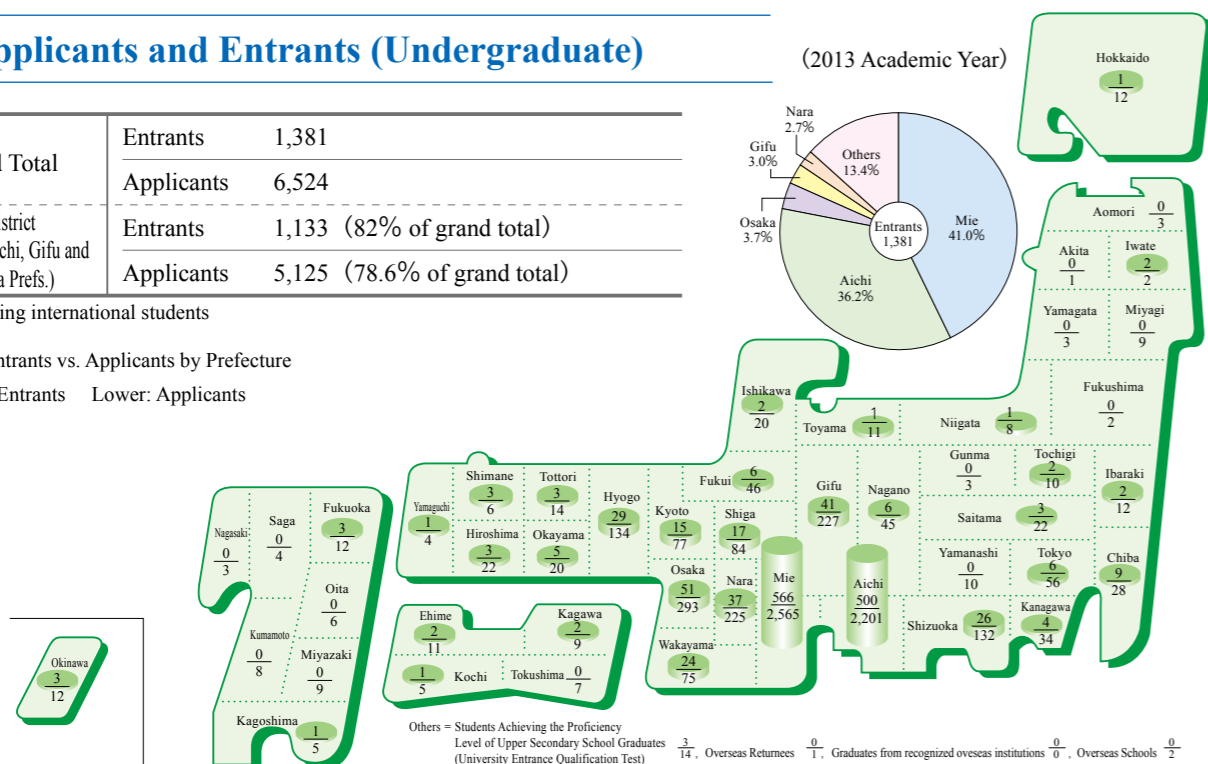
## Applicants and Entrants (Undergraduate)

Grand Total	Entrants	1,381
	Applicants	6,524
Tokai District (Mie, Aichi, Gifu and Shizuoka Prefs.)	Entrants	1,133 (82% of grand total)
	Applicants	5,125 (78.6% of grand total)

\*excluding international students

Map: Entrants vs. Applicants by Prefecture

Upper: Entrants Lower: Applicants



## Number of 2012 Graduates and Number of Degrees Conferred

### Faculties

Faculties	Departments and Courses	Graduates	
		2012 Academic Year	Cumulative Total
Humanities, Law and Economics	Department of Humanities	(82) 113	(4,063) 7,678
	Department of Law and Economics	(84) 190	
	Department of Social Sciences	(0) 2	
	<b>Subtotal</b>	(166) 305	
Education	Training Course for School Teachers	(97) 153	(9,751) 17,786
	Course for Information Science Education	(8) 21	
	Course for Continued Education	(11) 19	
	Course for Human Development Science	(13) 18	
<b>Subtotal</b>	(129) 211		
Medicine	School of Medicine	(27) 103	(1,720) 4,787
	School of Nursing	(82) 85	
	<b>Subtotal</b>	(109) 188	
Engineering	Department of Mechanical Engineering	(2) 78	(1,067) 13,099
	Department of Electrical and Electronic Engineering	(5) 85	
	Department of Chemistry for Materials	(18) 107	
	Department of Architecture	(14) 41	
	Department of Information Engineering	(6) 59	
	Department of Physics Engineering	(5) 37	
<b>Subtotal</b>	(50) 407		
Bioresources	Department of Sustainable Resource Sciences	(40) 74	(2,301) 6,053
	Department of Environmental Science and Technology	(35) 91	
	Department of Life Sciences	(31) 106	
	<b>Subtotal</b>	(106) 271	
(Previous) Agriculture	—	(222) 6,978	
(Previous) Fisheries	—	(56) 944	
<b>Total (1)</b>	<b>(560) 1,382</b>	<b>(19,180) 57,325</b>	

The numbers in parentheses represent the numbers of female students.

### One-Year Graduate Courses and Special Course

Divisions	Graduates		
	2012 Academic Year	Cumulative Total	
One-Year Graduate Courses	Special Needs Education	(7) 12	(50) 70
	(Previous) Special Education	—	(197) 352
	(Previous) Agriculture	—	(19) 78
Special Course	Agriculture	—	(18) 609
<b>Total (3)</b>	<b>(7) 12</b>	<b>(284) 1,109</b>	
<b>Grand Total (1) + (2) + (3)</b>	<b>(678) 1,858</b>	<b>(21,356) 68,699</b>	

The numbers in parentheses represent the numbers of females

### College of Medical Sciences

Department	Graduates	
	2012 Academic Year	Cumulative Total
Nursing	(704) 715	

The numbers in parentheses represent the numbers of female students.

### Graduate Schools

Graduate Schools	Courses	Graduates	
		2012 Academic Year	Cumulative Total
Humanities and Social Sciences	Master Course	(9) 11	(176) 344
	Education	(22) 42	(380) 843
Medicine	Master Course	(11) 19	(194) 303
	Doctoral Course	(8) 34	(156) 1,106
Engineering	Master Program	(22) 227	(302) 3,342
	Doctoral Program	(2) 13	(22) 261
Bioresources	Master Program	(29) 91	(537) 1,965
	Doctoral Program	(3) 13	(64) 260
Regional Innovation Studies	Master Program	(4) 12	(10) 36
	Doctoral Program	(1) 2	(1) 4
Engineering	Master Course	—	(31) 1,164
Bioresources	Master Course	—	(6) 152
Agriculture	Master Course	—	(12) 378
Fisheries	Master Course	—	(1) 107
<b>Total (2)</b>		<b>(111) 464</b>	<b>(1,892) 10,265</b>

The numbers in parentheses represent the numbers of females

## Number of Degrees Conferred

Special Fields	Master Degree		Doctoral Degree			
	2012 Academic Year	Cumulative Total	2012 Academic Year	Cumulative Total		
Humanities	(5) 5	(106) 182	Medical Science	By Completing the Course	(8) 34	(156) 1,106
Social Science	(4) 6	(70) 162		By Submitting Thesis	(3) 14	(98) 850
Education	(22) 42	(380) 843	Engineering	By Completing the Course	(2) 13	(22) 261
Medicine	(4) 12	(82) 187		By Submitting Thesis	(0) 0	(1) 32
Nursing	(7) 7	(112) 116	Philosophy	By Completing the Course	(4) 15	(65) 264
Engineering	(22) 227	(333) 4,506		By Submitting Thesis	(2) 8	(8) 77
Bioresources	(29) 91	(543) 2,117	<b>Total</b>		<b>(19)</b>	<b>(350)</b>
Academic	(4) 12	(10) 36			<b>84</b>	<b>2,590</b>
Agriculture	—	(12) 378				
Fisheries	—	(1) 107				
<b>Total</b>	<b>(97) 402</b>	<b>(1,649) 8,634</b>				

The numbers in parentheses represent the numbers of females

Note:

Master degree for "Humanities" and "Social Sciences" are given in the Graduate School of Humanities and Social Sciences. Master of Arts is given in the Graduate School of Regional Innovation Studies. Doctor of Philosophy is given in the Graduate School of Bioresources and Graduate School of Regional Innovation Studies.

# Career Paths of 2012 Graduates

As of May 1, 2013

Classification	Number of Graduates	Graduates											
		Entrants of Higher Grade Schools	Residents	Others	Employed (B)	Agriculture, Forestry, Fishery & Mining	Construction Industries	Manufacturing Industries	Electricity, Gas & Water Industries	Information and Communications	Transport Industries & Postal Operations	Distributor and Retailer	Finance and Insurance Industries
<b>Faculties</b>													
Humanities, Law and Economics	305 (166)	17 (11)	0 (0)	38 (21)	250 (134)	1 (1)	3 (1)	31 (15)	2 (0)	20 (15)	7 (2)	31 (19)	28 (19)
Education	211 (129)	17 (6)	0 (0)	23 (16)	171 (107)	0 (0)	0 (0)	6 (6)	0 (0)	13 (6)	3 (2)	5 (3)	10 (9)
Medicine	188 (109)	1 (1)	97 (26)	11 (6)	79 (76)	0 (0)	0 (0)	0 (0)	0 (0)	0 (0)	0 (0)	0 (0)	0 (0)
Engineering	407 (50)	243 (25)	0 (0)	19 (0)	145 (25)	0 (0)	23 (6)	74 (11)	1 (0)	12 (3)	1 (0)	4 (0)	1 (1)
Bioresources	271 (106)	97 (30)	0 (0)	29 (7)	145 (69)	5 (1)	7 (2)	35 (13)	0 (0)	11 (8)	3 (1)	19 (13)	8 (3)
<b>Graduate Schools</b>													
Humanities and Social Sciences (Master Course)	11 (9)	0 (0)	0 (0)	5 (5)	6 (4)	0 (0)	0 (0)	0 (0)	0 (0)	0 (0)	1 (1)	1 (1)	1 (1)
Education (Master Course)	42 (22)	2 (0)	0 (0)	6 (4)	34 (18)	0 (0)	0 (0)	2 (2)	0 (0)	1 (1)	0 (0)	2 (2)	0 (0)
Medicine (Doctoral Course)	73 (24)	3 (1)	0 (0)	9 (6)	61 (17)	0 (0)	0 (0)	4 (1)	0 (0)	1 (0)	0 (0)	0 (0)	0 (0)
Engineering (Doctoral Program)	227 (22)	2 (1)	0 (0)	1 (0)	224 (21)	0 (0)	15 (3)	153 (9)	5 (0)	15 (1)	6 (0)	2 (2)	0 (0)
Bioresources (Doctoral Program)	91 (29)	3 (0)	0 (0)	10 (6)	78 (23)	0 (0)	2 (1)	35 (7)	0 (0)	3 (3)	2 (0)	4 (2)	1 (0)
Regional Innovation Studies	7 (1)	0 (0)	0 (0)	0 (0)	7 (1)	1 (0)	0 (0)	2 (0)	0 (0)	0 (0)	0 (0)	0 (0)	0 (0)
<b>Grand Total</b>	<b>1,382 (560)</b>	<b>375 (73)</b>	<b>97 (26)</b>	<b>120 (50)</b>	<b>790 (411)</b>	<b>6 (2)</b>	<b>33 (9)</b>	<b>146 (45)</b>	<b>3 (0)</b>	<b>56 (32)</b>	<b>14 (5)</b>	<b>19 (13)</b>	<b>47 (32)</b>

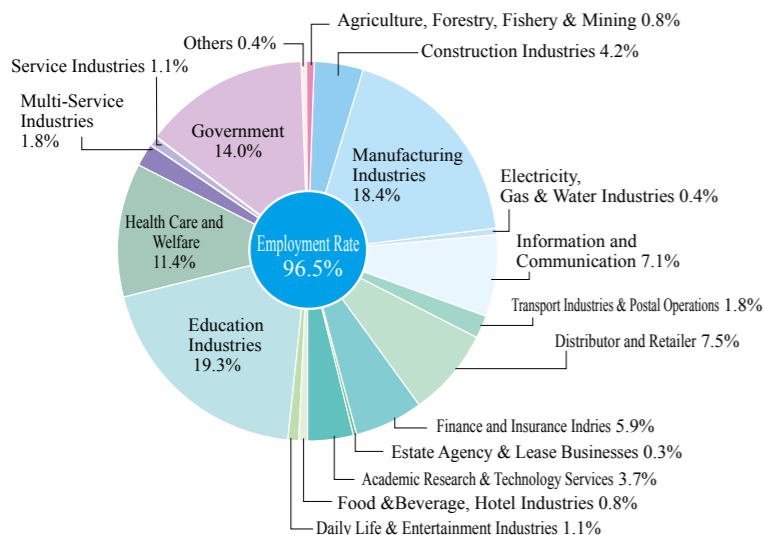
\* Those who finished "Doctoral Course" or "Doctoral Program" include those who have completed course work, but not submitted a thesis yet.

One-Year Graduate Course-Special Education	12 (7)	0 (0)	0 (0)	2 (1)	10 (6)	0 (0)	0 (0)	0 (0)	0 (0)	0 (0)	0 (0)	0 (0)	0 (0)
--	--------	-------	-------	-------	--------	-------	-------	-------	-------	-------	-------	-------	-------

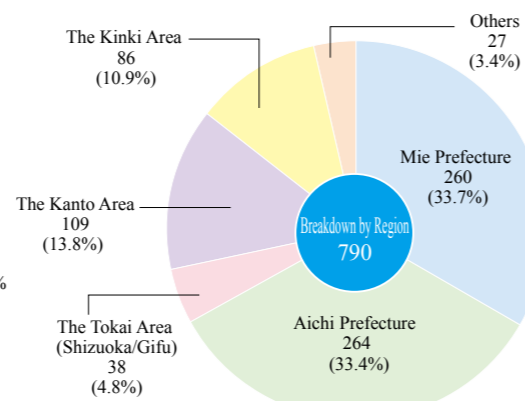
Estate Agency & Lease Businesses	Academic Research & Technology Services	Food & Beverage, Hotel Industries	Daily Life & Entertainment Industries	Education Industries	Health Care and Welfare	Multi-Service Industries	Service Industries	Government	Others	Region					
										Mie Prefecture	Aichi Prefecture	The Tokai Area (Shizuoka/Gifu)	The Kanto Area	The Kinki Area	Others
2 (1)	1 (1)	3 (2)	19 (9)	11 (4)	3 (3)	3 (2)	1 (1)	18 (13)	1 (1)	28 (24)	34 (24)	7 (3)	12 (8)	5 (4)	4 (3)
4 (2)	2 (0)	4 (2)	9 (6)	2 (2)	8 (3)	2 (0)	2 (0)	45 (16)	1 (1)	42 (13)	64 (28)	6 (4)	25 (10)	16 (9)	7 (4)
0 (0)	6 (3)	3 (1)	7 (4)	28 (15)	13 (6)	11 (6)	5 (2)	3 (1)	63 (29)	70 (37)	98 (52)	13 (7)	37 (18)	21 (13)	11 (7)
1 (1)		2 (1)	1 (1)	96 (55)	93 (54)	3 (2)		9 (9)		71 (45)	30 (19)	1 (1)	10 (8)	6 (2)	5 (3)
				7 (4)	6 (4)					9 (4)	2 (1)	1 (1)	3 (0)	1 (1)	
			1 (1)	5 (2)	4 (2)		2 (2)	1 (0)	1 (0)	7 (4)	5 (4)		3 (1)	3 (2)	
				3 (2)	3 (2)			1 (0)	1 (0)	2 (1)	6 (5)		3 (2)	3 (3)	
0 (0)	2 (2)	2 (1)	2 (2)	111 (63)	106 (62)	3 (2)	2 (2)	1 (0)	11 (9)	89 (54)	43 (29)	2 (2)	19 (11)	13 (8)	5 (3)
0 (0)	0 (0)	0 (0)	0 (0)	0 (0)	0 (0)	74 (71)		5 (5)		48 (46)	16 (16)	1 (1)	3 (3)	11 (10)	0 (0)
1 (0)							1 (0)	1 (0)		2 (0)	13 (1)	1 (0)	3 (0)	2 (0)	
5 (0)								1 (0)		2 (0)	23 (0)		4 (1)	3 (1)	
2 (0)			2 (0)		1 (1)			3 (1)		8 (3)	8 (3)	5 (0)	3 (0)	2 (0)	1 (0)
2 (1)							1 (0)			2 (2)	4 (0)	3 (1)	3 (2)	10 (2)	1 (1)
1 (0)										4 (0)	8 (1)	1 (0)	6 (2)	4 (1)	
1 (0)	3 (1)			1 (0)				3 (0)		2 (0)	9 (0)	1 (1)	5 (2)	2 (1)	
1 (0)	14 (2)	0 (0)	0 (0)	3 (0)	0 (0)	1 (1)	0 (0)	2 (0)	8 (1)	20 (5)	65 (5)	11 (2)	24 (7)	23 (5)	2 (1)
3 (3)				1 (1)				6 (2)	1 (0)	12 (9)	11 (4)	5 (2)	6 (4)	8 (7)	
3 (1)	1 (0)	1 (0)		3 (1)		1 (1)	1 (0)	2 (1)	11 (4)	15 (3)	16 (11)	4 (1)	10 (7)	5 (4)	4 (1)
1 (1)	1 (0)			7 (5)	3 (3)	1 (1)	1 (0)	7 (3)		12 (5)	15 (6)	2 (1)	10 (2)	5 (2)	5 (0)
1 (1)	7 (4)	1 (0)	0 (0)	11 (7)	3 (3)	1 (1)	7 (2)	3 (1)	24 (11)	39 (17)	42 (21)	11 (4)	26 (13)	18 (13)	9 (1)
2 (1)	29 (11)	6 (2)	9 (6)	153 (85)	122 (71)	90 (81)	14 (6)	9 (2)	111 (55)	266 (159)	264 (123)	38 (16)	109 (52)	86 (49)	27 (12)
				1 (1)				1 (1)		1 (1)			1 (1)	1 (1)	
				1 (0)		1 (0)				2 (0)			1 (1)	1 (1)	
0 (0)	0 (0)	0 (0)	0 (0)	2 (1)	0 (0)	1 (0)	0 (0)	1 (1)	0 (0)	3 (1)	0 (0)	0 (0)	2 (2)	1 (1)	0 (0)
				6 (4)	4 (3)	1 (0)				3 (1)	2 (2)		2 (1)	1 (1)	
				2 (1)	2 (1)					2 (1)			2 (1)		
0 (0)	0 (0)	1 (1)	0 (0)	16 (5)	16 (5)	2 (1)	0 (0)	0 (0)	2 (1)	15 (5)	4 (3)	1 (0)	1 (1)	1 (1)	2 (2)
				24 (10)	22 (9)	2 (1)	0 (0)	0 (0)	2 (1)	20 (7)	6 (5)	1 (0)	3 (2)	2 (2)	2 (2)
				3 (2)	1 (1)	4 (0)				3 (0)	1 (1)	1 (0)	2 (2)	1 (0)	
						5 (5)				2 (2)	1 (1)		1 (1)	1 (1)	
0 (0)	4 (1)	0 (0)	0 (0)	5 (1)	2 (0)	34 (6)		1 (1)		35 (6)	5 (1)		5 (1)	2 (1)	1 (0)
	4 (1)	0 (0)	0 (0)	8 (3)	3 (1)	43 (11)	0 (0)	1 (1)	0 (0)	40 (8)	7 (3)	1 (0)	5 (1)	5 (4)	3 (1)
2 (0)										4 (0)	28 (1)	3 (0)	14 (0)	8 (0)	1 (0)
3 (1)									1 (0)	3 (0)	27 (0)	1 (0)	12 (1)	7 (0)	
1 (1)										5 (2)	21 (3)	5 (0)	14 (2)	6 (1)	1 (0)
										8 (2)	5 (0)	1 (0)	8 (4)	4 (1)	2 (1)
										2 (0)	12 (0)		8 (2)	2 (0)	
0 (0)	18 (4)	0 (0)	0 (0)	2 (0)	2 (0)	0 (0)	0 (0)	2 (1)	4 (1)	3 (1)	10 (1)	2 (0)	1 (0)	1 (0)	1 (0)
										19 (4)	103 (5)	12 (0)	57 (9)	28 (2)	5 (1)
1 (1)	1 (0)			3 (1)	2 (0)					3 (1)	0 (0)		2 (0)		1 (0)
1 (1)	1 (0)	0 (0)	0 (0)	6 (0)	4 (0)					1 (0)			3 (1)	2 (0)	4 (0)
				9 (1)	6 (0)	0 (0)	0 (0)	0 (0)	0 (0)	4 (1)	0 (0)	0 (0)	5 (1)	2 (0)	5 (0)
	3 (2)			1 (1)						4 (2)	4 (1)		5 (2)	1 (1)	2 (1)
	3 (0)			1 (1)						5 (2)	10 (1)		5 (1)	4 (0)	2 (1)
	4 (1)			1 (0)	1 (0)		2 (0)	2 (1)	5 (3)	9 (4)	4 (1)	1 (0)	10 (2)	9 (2)	3 (2)
0 (0)	10 (3)	0 (0)	0 (0)	3 (2)	1 (0)	0 (0)	2 (0)	3 (1)	13 (4)	18 (8)	18 (3)	1 (0)	20 (5)	14 (3)	7 (4)
										2 (0)	1 (0)		1 (0)		
				2 (0)	2 (0)					1 (0)					2 (0)
				1 (0)					1 (1)	1 (0)					1 (1)
0 (0)	0 (0)	0 (0)	0 (0)	3 (0)	2 (0)	0 (0)	0 (0)	2 (0)	1 (1)	3 (0)	1 (0)	0 (0)	1 (0)	0 (0)	3 (1)
1 (0)				1 (0)	1 (0)			2 (1)	1 (0)	2 (1)	4 (1)	2 (1)	1 (0)	2 (1)	1 (0)
0 (0)	1 (0)	0 (0)	0 (0)	1 (0)	1 (0)	0 (0)	0 (0)	2 (1)	1 (0)	2 (1)	4 (1)	2 (1)	1 (0)	2 (1)	1 (0)
	2 (0)			1 (1)	1 (1)			1 (0)		6 (1)					1 (0)
0 (0)	2 (0)	0 (0)	0 (0)	1 (1)	1 (1)	0 (0)	0 (0)	1 (0)	0 (0)	6 (1)	0 (0)	0 (0)	0 (0)	0 (0)	1 (0)
1 (1)	36 (8)	1 (1)	0 (0)	54 (18)	38 (11)	46 (12)	2 (0)	12 (5)	21 (7)	115 (31)	139 (17)	17 (1)	94 (20)	54 (13)	27 (9)

The numbers in parentheses represent the numbers of female students.

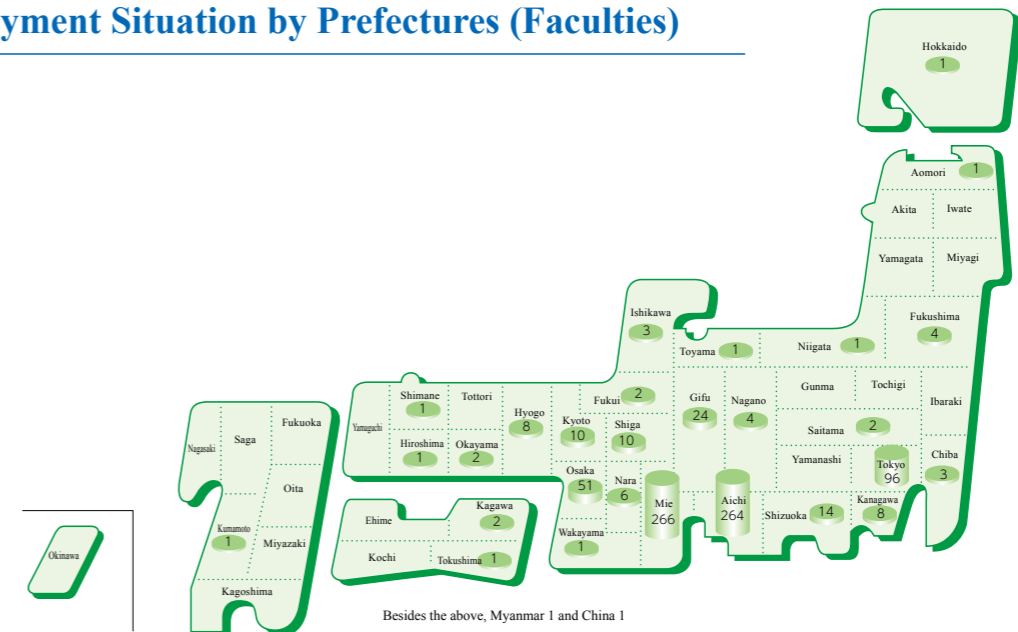
## Industries (Faculties)



## Region (Faculties)



## Employment Situation by Prefectures (Faculties)



Besides the above, Myanmar 1 and China 1

## Number of International Students

### Faculties

As of May 1, 2013

Faculties	Undergraduate		Master Course		Doctoral Course		Total
	Degree Students	Non-Degree Students	Degree Students	Non-Degree Students	Degree Students	Non-Degree Students	
Faculty of Humanities, Law and Economics	11 ( 7)	36 (28)	10 ( 6)	5 ( 2)			62 ( 43)
Faculty of Education	17 (16)	23 (21)	24 (21)	1 ( 1)			65 ( 59)
Faculty of Medicine					13 ( 4)		13 ( 4)
Faculty of Engineering	30 ( 2)	9 ( 5)	10 ( 4)	1 ( 1)	12 ( 2)		62 ( 14)
Faculty of Bioresources	2 ( 1)	7 ( 5)	29 (13)	3 ( 2)	17 ( 6)	1 ( 1)	59 ( 28)
Graduate School of Regional Innovation Studies					2 ( 1)		2 ( 1)
Center for International Education and Research		15 (14)					15 ( 14)
<b>Total</b>	<b>60 (26)</b>	<b>90 (73)</b>	<b>73 (44)</b>	<b>10 ( 6)</b>	<b>44 (13)</b>	<b>1 ( 1)</b>	<b>278 (163)</b>

### Nationalities

Total (Females)

19 Countries & Regions	278 (163)
------------------------	-----------

As of May 1, 2013

Regions	Countries	Undergraduate		Graduate		Center for International Education and Research			Total
		Degree Students	Non-Degree Students	Degree Students	Non-Degree Students	Japanese Studies Students	Japanese Language Students	Auditing Students	
Asia	China	39 (20)	34 (27)	74 (41)	8 ( 6)	5 ( 5)		1 ( 1)	161 (100)
	Viet Nam	10 ( 2)	4 ( 3)	3 ( 2)				3 ( 3)	20 ( 10)
	Indonesia	1 ( 1)	2 ( 1)	16 ( 9)					19 ( 11)
	Republic of Korea	5 ( 2)	8 ( 8)	4 ( 1)					17 ( 11)
	Thailand		5 ( 5)	6 ( 1)	1 ( 1)	1 ( 1)		3 ( 3)	16 ( 11)
	Malaysia	5 ( 1)	3 ( 3)	1 ( 1)					9 ( 5)
	Afghanistan			4					4
	Bangladesh			3	1				4
	India			2 ( 1)					2 ( 1)
	Singapore		1						1
Middle East	Iraq			1					1
Africa	Republic of Mali			1 ( 1)					1 ( 1)
North America	Mexico						1 ( 1)		1 ( 1)
South America	Brazil		1 ( 1)						1 ( 1)
Europe	Germany		13 (10)			1			14 ( 10)
	Russia		2 ( 1)		1				3 ( 1)
	Sweden		2	1					2
	Serbia			1					1
	France			117 (57)					1
<b>Total</b>		<b>60 (26)</b>	<b>75 (59)</b>		<b>11 ( 7)</b>	<b>7 ( 6)</b>	<b>1 ( 1)</b>	<b>7 ( 7)</b>	<b>278 (163)</b>

Degree Students	177 (83)	Non-Degree Students	101 (80)
-----------------	----------	---------------------	----------

The numbers in parentheses represent the numbers of female students.

## International Exchange

### Number of Foreign Researchers (2012 Academic Year)

Researchers 29

### Partner Universities and Institutions

University Level 55 Universities/Institutions in 20 Countries/Regions As of July 1, 2013

University/Institution Name	Country/Region	Agreement Date
Jiangsu University	China	Jan. 15, 1986
Chiang Mai University	Thailand	Aug. 22, 1989
University of Tasmania	Australia	Apr. 01, 1996
Universidad Politecnica de Valencia	Spain	July 04, 1997
Guangxi University	China	Feb. 22, 1999 (Apr. 21, 1995)
Kasetsart University	Thailand	Dec. 23, 1999
Khon Kaen University	Thailand	July 17, 2000 (Aug. 25, 1994)
Friedrich-Alexander-Universität-Erlangen-Nürnberg	Germany	Mar. 16, 2001
Dongguk University	Republic of Korea	Dec. 16, 2002
Ewha Womans University	Republic of Korea	Dec. 17, 2002
Xi'an University of Technology	China	Aug. 28, 2003
Suranaree University of Technology	Thailand	Oct. 18, 2003 (Sept. 8, 2000)
Bangladesh Agricultural University	Bangladesh	Mar. 15, 2004
Tianjin Normal University	China	Nov. 20, 2004 (Mar. 15, 2003)
University of North Carolina Wilmington	USA	Dec. 21, 2005
Jiangnan University	China	Feb. 13, 2006 (Mar. 30, 1998)
Universiti Putra Malaysia	Malaysia	Sept. 19, 2006
Bogor Agricultural University	Indonesia	Sept. 24, 2006 (Sept. 24, 2001)
Asian Institute of Technology	Thailand	Mar. 20, 2007
Sriwijaya University	Indonesia	Nov. 06, 2007
Visayas State University	Philippines	Dec. 18, 2007 (Dec. 13, 2002)
Thammasat University	Thailand	Jan. 15, 2008 (Feb. 27, 2004)
Nanjing University of Technology	China	July 07, 2008
Heidelberg University	Germany	Dec. 12, 2008
Henan Normal University	China	Dec. 15, 2008 (Dec. 26, 2005)
Sejong University	Republic of Korea	Feb. 10, 2009
Maejo University	Thailand	Mar. 31, 2009
Foreign Trade University	Viet Nam	May 26, 2009
Hochiminh City University of Pedagogy	Viet Nam	July 28, 2009
Shanghai Ocean University	China	Sept. 24, 2009 (Oct. 16, 1995)
Shenyang Pharmaceutical University	China	Feb. 25, 2010
Tashkent State Institute of Law	Uzbekistan	Mar. 22, 2010
Inner Mongolia University of Technology	China	Mar. 31, 2010 (Mar. 08, 2000)
University of Haluoleo	Indonesia	July 23, 2010
Hawai'i Pacific University	USA	Sept. 13, 2010
University of Sharjah	UAE	Oct. 04, 2010 (Dec. 24, 2008)
National University of Mongolia	Mongolia	Oct. 15, 2010
Khabalovsk State Academy of Economics and Law	Russia	Oct. 15, 2010
Yanbian University	China	Oct. 15, 2010
University of Savoie	France	Nov. 04, 2010
University of Nebraska-Lincoln	USA	Jan. 11, 2011
Ruhr-Universität Bochum	Germany	Mar. 28, 2011
Universitat Jaume I	Spain	Apr. 14, 2011
Cardiff University	UK	July 15, 2011
Anhui Agricultural University	China	Oct. 25, 2011 (Oct. 21, 2008)
Fraunhofer-Gesellschaft	Germany	Jan. 09, 2012
University of Leipzig	Germany	Feb. 07, 2012
Universitas Padjadjaran	Indonesia	Feb. 24, 2012
Tati University	Malaysia	May 24, 2012 (Aug. 02, 2010)
Yunnan University	China	Aug. 21, 2012
Beijing Foreign Studies University	China	Sept. 17, 2012 (Mar. 23, 2012)
Centre Suisse D'Electronique et de Microtechnique (CSEM)	Switzerland	Jan. 23, 2013
Nankai University	China	Mar. 4, 2013 (Jan. 22, 2010)
University of Central Lancashire	UK	Apr. 19, 2013
National Kaohsiung Normal University	Taiwan	Jun. 18, 2013

\* Date inside the parenthesis ( ) shows date of contract under Faculty Level.

### Faculty Level

31 Universities/Institutions in 18 Countries/Regions As of July 1, 2013

University/Institution Name	Country/Region	Agreement Date	Affiliation
Universite Charles-de-Gaulle Lille 3	France	Nov. 1, 1989	Faculty of Humanities, Law and Economics
Pukyong National University	Republic of Korea	Sept. 22, 1995	Faculty of Bioresources
Thermal Engineering and Engineering Mechanics, Tsinghua University	China	Oct. 1, 1995	Faculty of Engineering
School of Medicine, Mercer University	USA	Oct. 29, 1998	Faculty of Medicine
Universite Lyon 2	France	Jan. 21, 2002	Faculty of Humanities, Law and Economics
School of Medicine, Wayne State University	USA	Mar. 18, 2002	Faculty of Medicine
Institute Agronomique et Veterinaire Hassan II	Morocco	Nov. 20, 2002	Faculty of Bioresources
Shanghai Jiao Tong University	China	Aug. 11, 2004	Faculty of Medicine
Faculty of Medicine, Rostock University	Germany	Oct. 29, 2004	Faculty of Medicine
King Mongkut's Institute of Technology Ladkrabang	Thailand	Sept. 05, 2005	Faculty of Engineering
Guangxi Medical University	China	June 06, 2006	Faculty of Medicine, Graduate School of Medicine
School of Medicine, University of Zambia	Zambia	Feb. 07, 2007	Faculty of Medicine, Graduate School of Medicine
School of Medicine, The Muhimbili University of Health and Allied Sciences	Tanzania	Oct. 19, 2007	Faculty of Medicine, Graduate School of Medicine
The Sahlgrenska Academy at the University of Gothenburg	Sweden	Jan. 14, 2009	Faculty of Medicine, Graduate School of Medicine
College of Science, Zhejiang University	China	Mar. 28, 2009	Faculty of Engineering, Graduate School of Engineering
School of Medicine, University of New Mexico	USA	June 24, 2009	Faculty of Medicine, Graduate School of Medicine
Ecole Nationale Supérieure d'Arts et Metiers (ENSAM)	France	Aug. 31, 2009	Faculty of Engineering, Graduate School of Engineering
School of Bioresources, King Mongkut's Institute of Technology Thonburi	Thailand	Oct. 20, 2009	Faculty of Bioresources, Graduate School of Bioresources
School of Medicine, University of Ghana	Ghana	Feb. 18, 2010	Faculty of Medicine, Graduate School of Medicine
School of Medicine, L'Universita degli Studi di Perugia	Italy	Feb. 22, 2010	Faculty of Medicine, Graduate School of Medicine
Institut Supérieur des Matériaux et Mécaniques Avancées (ISMANS)	France	July 26, 2010	Faculty of Engineering, Graduate School of Engineering
The Second Medical College of Langzhou University	China	Mar. 17, 2011	Faculty of Medicine, Graduate School of Medicine
Faculty of Humanities and Theology, Lund University	Sweden	Mar. 18, 2011	Faculty of Humanities, Law and Economics
The Cleveland Clinic Foundation Lerner Research Institute	USA	Apr. 22, 2011	Graduate School of Engineering
Faculdade de Filosofia, Letras e Ciências Humanas da Universidade de São Paulo (FFLCH-USP)	Brazil	May 16, 2011	Faculty of Humanities, Law and Economics
University of Health Sciences, Lao PDR	Laos	Sept. 26, 2011	Faculty of Medicine, Graduate School of Medicine
Amrita Institute of Medical Sciences	India	Jan. 30, 2012	Graduate School of Medicine
National Technical University of Athens	Greece	May 16, 2012	Graduate School of Engineering
Polytechnic University of Tirana	Albania	Sept. 13, 2012	Graduate School of Engineering
University of Medicine-1, Yangon	Myanmar	Dec. 17, 2012	Faculty of Medicine, Graduate School of Medicine
College of Life and Environmental Science, Wenzhou University	China	Mar. 31, 2013	Graduate School of Bioresources, Faculty of Bioresources

## Number of Staff Members

As of May 1, 2013

Classification	President	Trustees	Auditors	Teaching Staff				Total	Teachers at Affiliated Schools	Other Staff	Total	Grand Total
				Professors	Associate Professors	Associate Professors (Lecturers)	Assistant Professors					
President, Trustees, Auditors	1	5 (1)	2								8 (1)	
Administration Bureau									204 (61)	204 (61)	204 (61)	
Community-University Research Cooperation Center				1	1		3		1	1	6	
Life Science Research Center				2	3 (1)		5		4 (1)	4 (1)	14 (2)	
Center for International Education and Research				2 (2)	2 (1)						4 (3)	
Center for Information Technologies and Networks					1		2		3 (1)	3 (1)	6 (1)	
Higher Education Development Center						1					1	
Center for Physical & Mental Health				2	1				2 (2)	2 (2)	5 (2)	
Environmental Preservation Center							1				1	
Laboratory of Regional Studies at University Library					1 (1)						1 (1)	
Center for Student Support						1	1				2	
Faculty of Humanities, Law and Economics				38 (10)	34 (9)	2 (1)			8 (3)	8 (3)	82 (23)	
Faculty of Education				55 (7)	30 (6)	4 (4)			9 (5)	9 (5)	98 (22)	
Integrated Center for Education Research and Practice				2	1 (1)						3 (1)	
Kindergarten									8 (7)	8 (7)	8 (7)	
Primary School									26 (10)	7 (4)	33 (14)	
Junior High School									27 (10)	27 (10)	27 (10)	
Mentally Challenged Children's School									29 (15)	29 (15)	29 (15)	
Graduate School of Medicine				37 (1)	25 (1)	15	42 (9)	119 (11)	24 (8)	24 (8)	143 (19)	
Faculty of Medicine				10 (7)	8 (8)	4 (4)	24 (12)	46 (31)			46 (31)	
University Hospital				3 (1)	12	53 (4)	99 (16)	167 (21)	600 (484)	600 (484)	767 (505)	
Graduate School of Engineering				47	39	3	28 (2)	117 (2)	36 (11)	36 (11)	153 (13)	
Graduate School of Bioresources				45 (2)	40 (4)	3 (1)	12	100 (7)	14 (9)	14 (9)	114 (16)	
Kii-Kuroshio Bio-Regional Field Science Center									22 (6)	22 (6)	22 (6)	
Farm Station				1	1			2			2	
Forest Station					2			2			2	
Fishery Research Station				1				1			1	
Training Ship "SEISUI MARU"						1	2	3	13 (1)	13 (1)	16 (1)	
Graduate School of Regional Innovation Studies				5	1			6	3 (2)	3 (2)	9 (2)	
<b>Grand Total</b>	<b>1</b>	<b>5 (1)</b>	<b>2</b>	<b>251 (30)</b>	<b>203 (32)</b>	<b>86 (14)</b>	<b>219 (39)</b>	<b>767 (116)</b>	<b>90 (42)</b>	<b>950 (598)</b>	<b>1,040 (640)</b>	<b>1,807 (756)</b>

- \* One of the auditors works part-time.
- \* Fixed-term staff such as substitute staff are included and staff on administrative leave or maternity leave are excluded.
- \* The numbers in parentheses represent the numbers of female.
- \* University Educators are including Special Appointed Professor. (continued employment)

### Endowed Departments and University-Industry Cooperation Departments (Graduate School of Medicine)

As of May 1, 2013

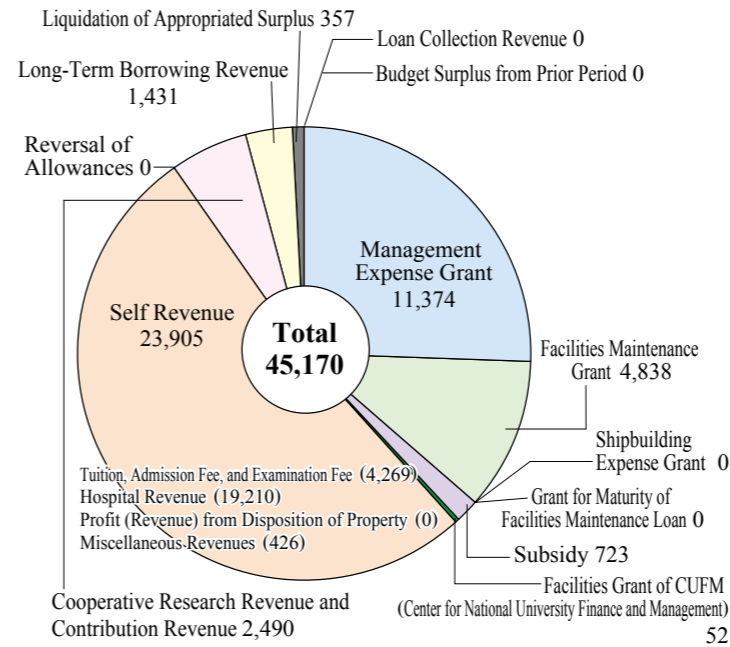
Classification	Divisions	Teaching Staff (Full-time)					Teaching Staff (Part-time)	Total
		Professors	Associate Professors	Associate Professors (Lecturers)	Assistant Professors			
	Innovative Surgery and Surgical Techniques Development	Endowed Department			2 (1)		2 (1)	
	Orthopedics and Sports Medicine	Endowed Department	1		1		2	
	Dementia Prevention and Therapeutics	Endowed Department		1		1	2	
	Spinal Surgery and Medical Engineering	Endowed Department	1		1		2	
	Cancer Vaccine	Endowed Department			1	1	2	
	Community Medicine, Kameyama	Endowed Department				3	3	
	Clinical Cardiovascular Research	Endowed Department	1				1	
	Community Medicine, Iga	Endowed Department			2	3	5	
	Community Medicine, Tsu	Endowed Department				3	3	
	Immuno-gene Therapy	University-Industry Cooperation Department		2	1		1	
	Innovative Neuro-intervention Radiology	University-Industry Cooperation Department	1				1	
	Human Research Promotion and Drug Development	University-Industry Cooperation Department	1				1	
	Regional Elderly Care & Elderly Medicine	University-Industry Cooperation Department		1			1	

The numbers in parentheses represent the numbers of female students.

## Budget (Fiscal Year 2013)

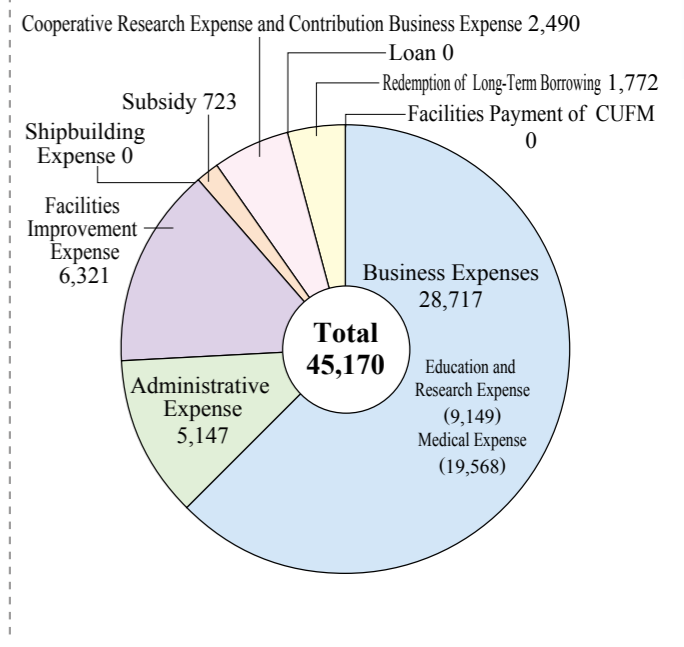
### Revenues

(Unit: 1,000,000 Yen)



### Expenses

(Unit: 1,000,000 Yen)



### Grant-in-Aid for Scientific Research (2012), Research in Cooperation with Private Sectors (2012)

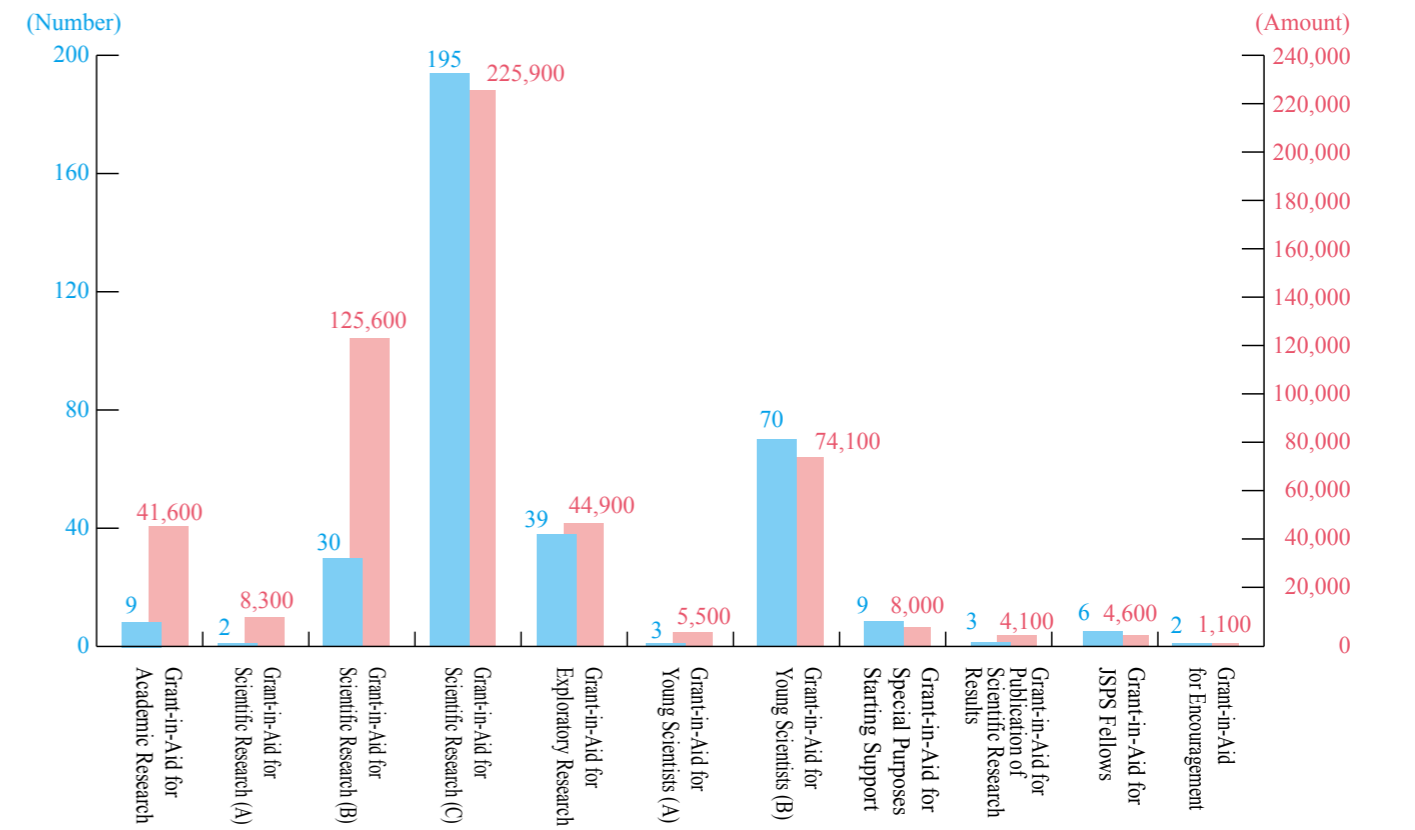
### Research in Cooperation with Private Sectors (Achievement)

(Unit: 1,000 Yen)

Category	Number	Amount
Research in Cooperation with Private Sectors	259	422,483
Research in Trust	181	737,717
Grants and Endowments	1,273	851,743
<b>Total</b>		<b>2,011,943</b>

### Grant-in-Aid for Scientific Research

(Unit: 1,000 Yen)



Direct Expenses only (Number) 368 (Amount) 543,700

## Mutual Cooperation Agreement with Community

As of April 1, 2013

Name	Agreement Date	Name	Date
<b>National Institute</b>		<b>Suzuka City</b>	<b>June 30, 2010</b>
Chubu Regional Development Bureau, Ministry of Land, Infrastructure, Transport and Tourism	December 19, 2011	<b>Ise City</b>	<b>January 28, 2011</b>
<b>Mie Prefecture</b>		<b>Educational Institutions</b>	
Toba SEA-FOLK Museum	March 18, 2004	<b>Tsu City Board of Education</b>	<b>November 16, 2004</b>
Agreement on Disaster Mitigation with Mie Prefecture	December 21, 2005	<b>Wakayama University</b>	<b>November 30, 2004</b>
Agreement on Mutual Cooperation for Disaster Control with Mie Prefecture	March 20, 2007	<b>Yokkaichi City Board of Education</b>	<b>November 22, 2006</b>
Mie Prefectural Science and Technology Promotion Center	March 23, 2007	<b>Suzuka University of Medical Science</b>	<b>June 22, 2007</b>
Collaboration Agreement on "New Public Museum" with Mie Prefecture	March 16, 2009	<b>Mie Prefecture Board of Education</b>	<b>November 30, 2007</b>
Collaboration Agreement on the field of "Medicine" with Mie Prefecture	January 29, 2010	<b>University Support Project for Strategic Collaboration</b>	<b>September 26, 2008</b>
Mie Prefecture Department of Disaster Prevention and Crisis Management	May 26, 2010	<b>Asahi University</b>	<b>February 3, 2010</b>
<b>Cities and Towns</b>		<b>Tsu City College</b>	<b>October 4, 2011</b>
<b>Owase City</b>	<b>December 2, 2002</b>	<b>Nagoya University and Aichi University of Education</b>	<b>April 24, 2012</b>
<b>Yokkaichi City</b>	<b>October 7, 2003</b>	<b>Private Sectors</b>	
<b>Kameyama City</b>	<b>January 27, 2004</b>	<b>CHUBU Electric Power Co.Inc.</b>	<b>September 14, 2005</b>
<b>Toba City</b>	<b>March 22, 2004</b>	<b>Fuji Electric Retail System Co.Ltd</b>	<b>February 22, 2006</b>
<b>Asahi Town</b>	<b>June 9, 2004</b>	<b>Hyakugo Economic Research Institute, The Hyakugo Bank.Ltd</b>	<b>March 10, 2006</b>
<b>Iga City</b>	<b>January 23, 2006</b>	<b>Development Bank of Japan</b>	<b>March 10, 2006</b>
<b>Minami Ise Town</b>	<b>May 12, 2006</b>	<b>Okasan Holdings Inc.</b>	<b>June 5, 2006</b>
<b>Tsu City</b>	<b>February 20, 2009</b>	<b>The Chuo Mitsui Trust and Banking Company Limited, Mitsubishi UFJ Trust and Banking</b>	<b>November 1, 2007</b>
<b>Shima City</b>	<b>July 6, 2009</b>	<b>C Energy Co.</b>	<b>December 22, 2011</b>

## Extension Courses

(2012 Academic Year)

Course Title	Period	Capacity	Participants	Organizer
Mie Academic Seminar 2012 "Can Extreme Weather be Predicted?"	July 16	80 persons	General Public	Mie Lifelong Learnign Center, Mie University
Seminar by Faculty of Humanities, Law and Economics (11 Seminars)	September 11 – December 17	20 persons per seminar	General Public	Faculty of Humanities, Law and Economics
The 25 <sup>th</sup> "Jinshin Revolt" Walk	September 15	100 persons	General Public	Ise Bay & Kumano Region Research Center
Extension Course by Faculty of Medicine	October 14	100 persons	General Public	Graduate School of Medicine
The 4 <sup>th</sup> Manufacturing Experience Seminar in Summer Vacation	August 7 – 23	40 persons	General Public (Especially for Junior High School Students)	Faculty of Engineering, Graduate School of Engineering
Extension Course by Graduate School of Bioresource "Future of Forest Science and Management, Preservation and Resource Utilization of Forestry"	November 17 – 18	50 persons	General Public (High School Students and Older)	Graduate School of Bioresources
Extension Course of Mie University Farm, "Let's Walk in the Forest of Source!"	July 29	30 persons	General Public (Especially for 4th to 6th graders in the Elementary School)	Kii-Kuroshio Bio-Regional Field Science Center

## Mie University Regional Contribution Activities

(2012 Academic Year)

	Activities	Organizer	Representative
1	Formulation of a Sustainable Community Cultural Movement through Collaboration with the University and the General Public: Research and Application of Paleography in the Archives at Kumano City Museum of History	Faculty of Humanities, Law and Economics	TSUKAMOTO, Akira
2	Regional Rejuvenation Focused upon "Ninja" Culture in Iga City	Faculty of Humanities, Law and Economics	KODAMA, Shigeru
3	Support Activities for the Formulation of Sustainable Community Based on "Multi-culture": Toward the Achievement of the "Sasagawa Model"	Faculty of Humanities, Law and Economics	ENARI, Miyuki
4	Central City Innovation in Iga-ueno City	Faculty of Humanities, Law and Economics	GOTO, Motoi
5	Exchange Activity between Kindergartners and Elementary School Students in Tsu city and International Students from Germany	Faculty of Humanities, Law and Economics	OKOCHI, Tomoko
6	Monitoring Seaside Plants at Machiya Seashore: Renovating Biodiversity of the Shore next to Mie University	Faculty of Education	HIRAYAMA, Daisuke
7	Research and Publication on Takatora Todo, a Japanese Powerful Territorial Lord, and the Todo Domain: Japanese Dramas and Revitalization of the Town	Faculty of Education	FUJITA, Tatsuo
8	Promoting Activity for Improvement of Sports Ability and Physical Strength of Children in Yokkaichi	Faculty of Education	SUGITA, Masaaki
9	Creation for Robot Community in the Region: Opening Robot Creating Classes	Faculty of Education	UOZUMI, Akio
10	The 17 <sup>th</sup> Junior Street Festival: Creating "Running," "Jumping," and "Throwing" Opportunities for Elementary School Students	Faculty of Education	SUGITA, Masaaki
11	Promoting Exercise Programs which Develops Social Bonds	Faculty of Education	SHIGEMATSU, Ryosuke
12	Asteroid Discovery Project in Owase	Faculty of Education	ITO, Nobunari
13	Establishment of Urban Development System in the Fields of Medicine, Health, and Welfare Involving the General Public including Medical Students Who Wish to Work in Community Using the World Cafe System	Graduate School of Medicine	YOSHIMOTO, Hisashi
14	Supporting Parents and Children Having Disabilities	Faculty of Medicine	TSUCHIDA, Sachiko
15	Environmental Survey in the Regions which Have Disposal Stations of Factory Wastes, and Health Survey and Education Activities for Residents	Faculty of Medicine	TAKEUCHI, Sachie
16	Activities on Progress of Visiting Rate for Mammography Screening	University Hospital	NAGASAWA, Naoki
17	Practical Study on Environmental Issues Focusing on Wind Power Generation for Elementary School and Junior High School Students	Graduate School of Engineering	MAEDA, Takao
18	Supporting Activities for Secure and Safe Urban Development in Regional Community	Graduate School of Engineering	HATANAKA, Shigemitsu
19	Science Educational Activities for Teachers of Elementary School and Junior High School in Mie Prefecture through Science Manual Training Courses	Graduate School of Engineering	FUJIWARA, Yuji
20	Effective Utilization of Unused Marine Products Caught by Pound Net in Kumano Water: Development of Marine Products Using Unused Marine Products	Graduate School of Bioresources	AKIYAMA, Toshio
21	Supporting 100 Pieces of Soy Beans Activity for Private Kindergartens in Mie Prefecture	Graduate School of Bioresources	NAGASUGA, Kiyoshi
22	Scientific Elucidation of Traditional Technology of Stone Walls in the Farm and Training of Young Stone Workers	Graduate School of Bioresources	OKAJIMA, Kenji
23	Planning and Conducting Science Seminars for Parents and Children in the Region: "Hypothetical Experiments for Parents and Children"	Graduate School of Bioresources	KIMURA, Taeko
24	Educational Farm Promoting Project	Faculty of Bioresources, Kii-Kuroshio Bio-Regional Field Science Center	KOUBARA, Jun
25	Implementation of Delivery Courses for Promoting Science Education and Developing Trial Materials	Iga Community-based Research Center	YAMAMOTO, Yoshio
26	Preservation and Devolution of the "World Heritage Site, Kumano Kodo"	Student Support Center	MIYAZAKI, Saeko

## Mie University Research Centers

(2012 Academic Year)

	Name of Centers	Representatives
1	Mie University Advanced Battery Research Center	IMANISHI, Nobuyuki, Professor, Graduate School of Engineering
2	Mie University Research Center for Genomic Medicine (MRG)	YAMADA, Yoshiji, Professor, Life Science Research Center
3	The Center of Ultimate Technology on Nano-Elections (MIE-CUTE)	HIRAMATSU, Kazumasa, Professor, Graduate School of Engineering
4	Mie University Research Center for Regional Informatization	YAMAMORI, Kazunori, Professor, Faculty of Education
5	Mie University Research Center for Science-Based Food, Agriculture, Forestry and Fisheries	KAMEOKA, Takaharu, Professor, Graduate School of Bioresources
6	Mie University Energy and Environmental Engineering Research Center	MAEDA, Takao, Professor, Graduate School of Engineering
7	Mie University Mie ECO System Research Center (MECOS)	PARK, Hye-Sook, Professor, Humanities, Low and Economics
8	Mie University Research Center of Regional Bioproducts for Smart Utilizations	HISAMATSU, Makoto, Professor, Graduate School of Bioresources
9	Mie University Research Center of Security Technology for Industry and Social Infrastructure	JINYAMA, Ho, Professor, Graduate School of Bioresources
10	Mie University Medical Zebrafish Research Center (MERC)	TANAKA, Toshio, Professor, Graduate School of Medicine
11	Mie University Brain Science and Animal Model Research Center (BSAM)	NARITA, Masaaki, Professor, Graduate School of Medicine
12	Mie University Research Center for Development of Local Community	KODAMA, Katsuya, Professor, Humanities, Low and Economics
13	Mie University Research Center for Urban History (MRCUH)	FUJITA, Tatsuo, Professor, Faculty of Education
14	Mie University Robotics Mechatronics Research Center for Symbiosis with Human	IKEURA, Ryojun, Professor, Graduate School of Engineering
15	Mie University Biobank Research Center (MUBRC)	NOBORI, Tsutomu, Professor, Graduate School of Medicine
16	The YUBA Method R&D Enterprise Center of Mie University	YUBA, Toru, Professor, Faculty of Education
17	Mie University Research Center for Matrix Biology (RCMB)	IMANAKA, Kyoko, Associate Professor, Graduate School of Medicine
18	Mie University Soft Matter Chemistry Research Center	KITAGAWA, Toshikazu, Professor, Graduate School of Engineering

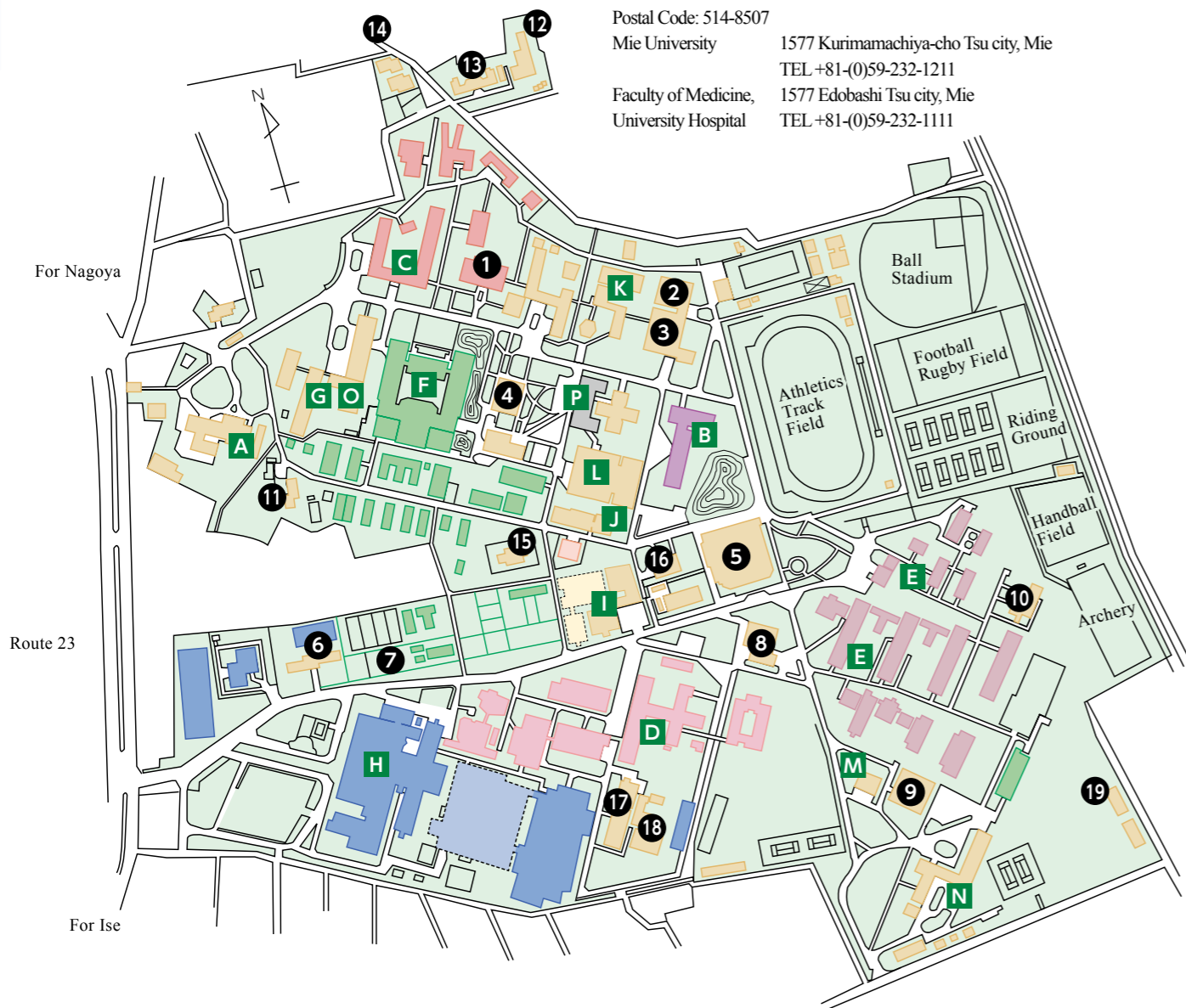
Overview of Mie University (Kamihama Campus)



D  
A  
T  
A

D  
A  
T  
A

# Campus Map



Postal Code: 514-8507  
 Mie University 1577 Kurimamachiya-cho Tsu city, Mie  
 TEL +81-(0)59-232-1211  
 Faculty of Medicine, 1577 Edobashi Tsu city, Mie  
 University Hospital TEL +81-(0)59-232-1111

The building circled by dotted line is under construction.



**A** Administration Bureau



**B** Faculty of Humanities, Law and Economics



**C** Faculty of Education



**D** Graduate School of Medicine, Faculty of Medicine



**E** Graduate School of Engineering, Faculty of Engineering



**F** Graduate School of Bioresources, Faculty of Bioresources



**G** Graduate School of Regional Innovation



**H** University Hospital



**I** Social Cooperation Research Center, Life Science Research Center, (Molecular Biology Facilities) Campus Incubator



**J** Center for Information Technologies and Networks



**K** Liberal Arts Center, Higher Education Development Center



**L** University Library



**M** Environmental Preservation Center



**N** University Research Hall I

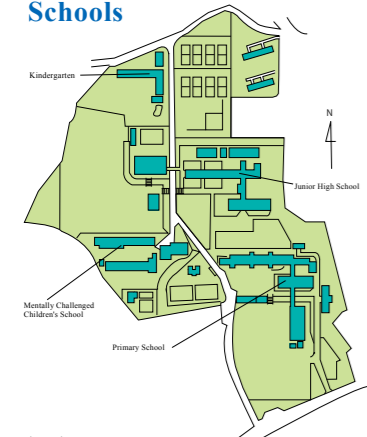


**O** University Research Hall II (Center for Student Support, Center for International Education and Research, Center for Physical & Mental Health)



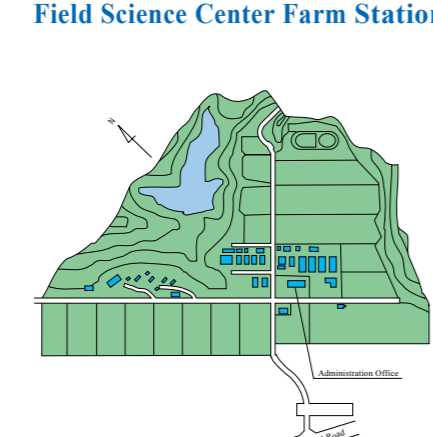
**P** Mie Environmental & Informational Platform (MEIPL)

## Map of Affiliated Schools



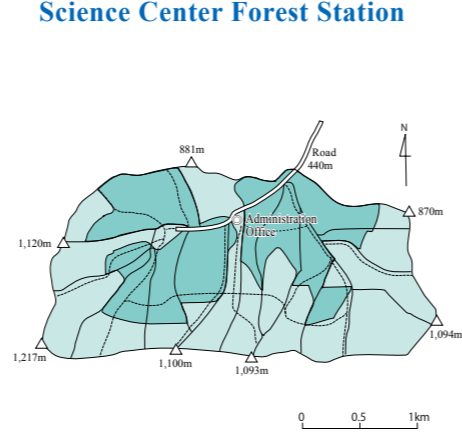
Postal Code: 514-0062  
 Kindergarten 523 Kannonji-cho Tsu city, Mie TEL +81-(0)59-227-1711  
 Primary School 359 Kannonji-cho Tsu city, Mie TEL +81-(0)59-227-1295  
 Junior High School 471 Kannonji-cho Tsu city, Mie TEL +81-(0)59-226-5281  
 Mentally Challenged Children's School 484 Kannonji-cho Tsu city, Mie TEL +81-(0)59-226-5193

## Map of Kii-Kuroshio Bio-Regional Field Science Center Farm Station



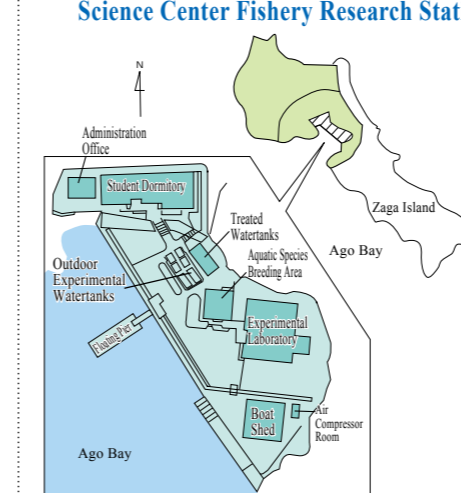
Postal Code: 514-2221  
 2072-2 Takanoo-cho Tsu city, Mie  
 TEL +81-(0)59-230-0044

## Map of Kii-Kuroshio Bio-regional Field Science Center Forest Station



Postal Code: 515-3532  
 2735 Kawakami Misugi-cho Tsu city, Mie  
 TEL +81-(0)59-274-0135

## Map of Kii-Kuroshio Bio-Regional Field Science Center Fishery Research Station



Postal Code: 517-0703  
 4190-172 Wagu Shima-cho Shima city, Mie  
 TEL +81-(0)599-85-4604

**Training Ship "Seisui Maru" Base**  
 1819-18 Aza Tsukiji, Ooguchi-cho Matsusaka city, Mie  
 TEL +81-(0)598-51-0710  
 515-0001  
 TEL +81-(0)598-50-1066 (Matsusaka Port)  
 TEL +81-(0)90-3022-8767 (Ship Mobile)  
 TEL 001-010-870-764623655 (INMARSAT)

**Yokkaichi Community-based Research Network**  
 c/o Mie Northern Regional Industry Promotion Center,  
 4<sup>th</sup> Floor  
 1-3-18 Yasujima Yokkaichi city, Mie 510-0075

**Iga Community-based Research Institute**  
 c/o Regional Industrial Creation Center by Industry-academia-government Collaboration "Yume Techno Iga"  
 1-3-3 Yumegaoka Iga city, Mie 518-0131  
 TEL +81-(0)595-41-1071

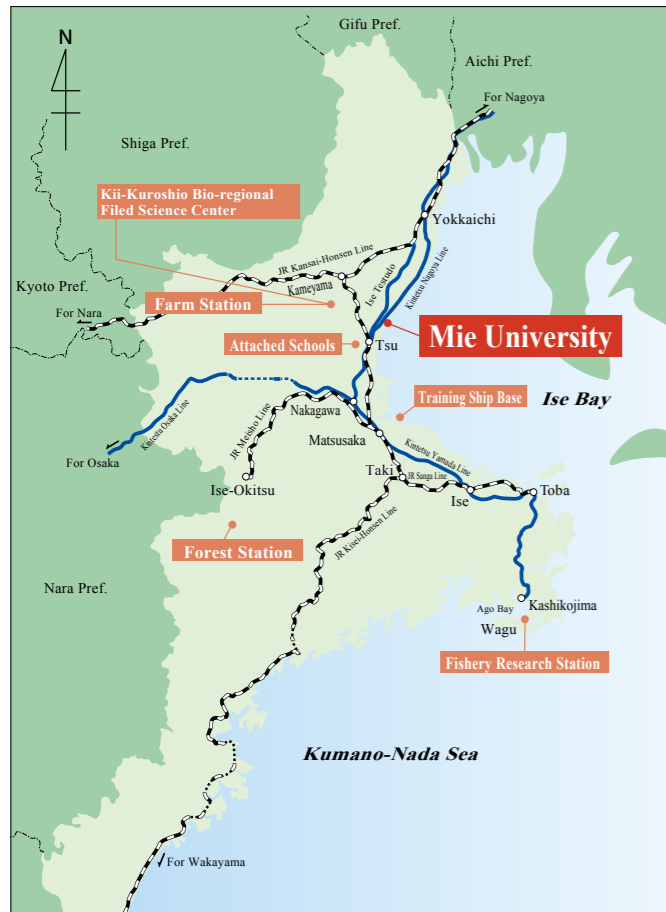
- 1 Integrated Center for Educational Research and Practice
- 2 Indoor Training Center
- 3 Gymnasium 1
- 4 Cafeteria 1
- 5 Auditorium (Sansui Hall)
- 6 Women's Dormitory for International Students
- 7 Experimental Watertanks
- 8 Cafeteria 2
- 9 Gymnasium 2
- 10 Industrial Technology Innovation Institute
- 11 Sansui Kaikan Hall
- 12 University Foreign Students' House
- 13 Women's Dormitory
- 14 Foreign Teachers' Quarters
- 15 Life Science Research Center (Radioisotope Facilities for Bioresource Science)
- 16 Creative Research & Development Institute
- 17 Life Science Research Center (Experimental Animal Facilities)
- 18 Life Science Research Center (Radioisotope Facilities for Medical Science)
- 19 Foreign Students' Dormitory

DATA

DATA

# Location of Campus

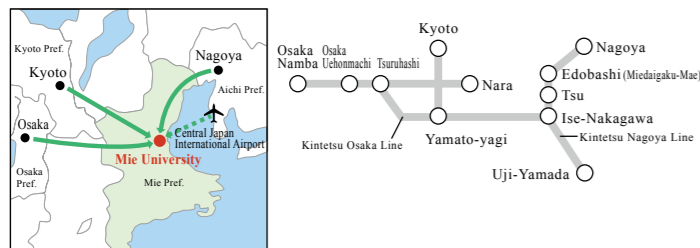
## Mie Prefecture



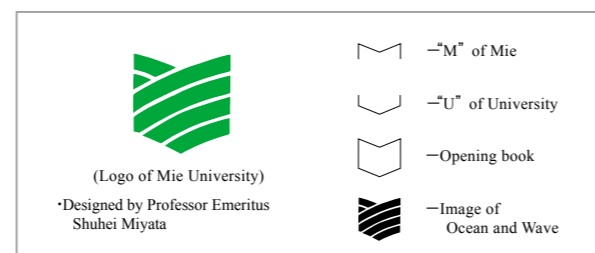
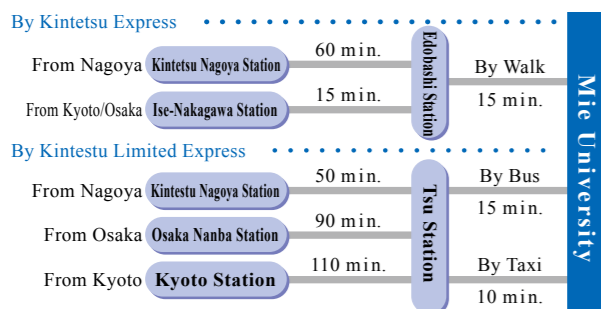
## Tsu



## Access



- 1 By Bus from Tsu Station  
Take bus at the No.4 bus stop bound for No.6, 40, 51, 52, 53, or 56 bus and get off at “Daigaku-mae.” Get off at “Daigaku-byoin-mae” for the University Hospital, Faculty of Medicine, and Faculty of Engineering.
- 2 By taxi from Tsu Station (10 min.)
- On foot from Edobashi Station (15 min.)
- By Tsu Airport Line (high speed boat) from Central Japan International Airport (Centrair) to Tsu Nagisamachi Port (Tsu-city Marina) (45 min.)
  - 1 By bus from Tsu Nagisamachi Port to Tsu Station (15 min.)
  - 2 By taxi from Tsu Nagisamachi Port to Mie University (15 min.)



## Campus Addresses

Division	Address	Phone
Administration Bureau	1577 Kurimamachiya-cho Tsu city, Mie Pref. 514-8507	+81-(0)59-232-1211
Community-University Research Cooperation Center		
Community-University Research Cooperation Office		
Intellectual Property Office		
Industrial Technology Innovation Institute		
Creative Research & Development Institute		
Life Science Research Center	2-174 Edobashi Tsu city, Mie Pref. 514-8507	+81-(0)59-232-1111
Molecular Biology Facilities		
Experimental Animal Facilities		
Electron Microscope Facilities		
Radioisotope Facilities for Medical Science		
Radioisotope Facilities for Bioresource Science		
Center for International Education and Research	1577 Kurimamachiya-cho Tsu city, Mie Pref. 514-8507	+81-(0)59-232-1211
Center for Information Technologies and Networks		
Higher Education Development Center		
Center for Student Support		
Center for Environmental Management and Enhancement (CEME)		
Regional Area Strategy Center		
Center for Physical & Mental Health		
University Library		
Liberal Arts Center		
Faculty of Humanities, Law and Economics		
Faculty of Education		
Integrated Center for Educational Research and Practice		
Kindergarten	523 Kan'nonji-cho Tsu city, Mie Pref. 514-0062	+81-(0)59-227-1711
Primary School	359 Kan'nonji-cho Tsu city, Mie Pref. 514-0062	+81-(0)59-227-1295
Junior High School	471 Kan'nonji-cho Tsu city, Mie Pref. 514-0062	+81-(0)59-226-5281
Mentally Challenged Children's School	484 Kan'nonji-cho Tsu city, Mie Pref. 514-0062	+81-(0)59-226-5193
Faculty of Medicine	2-174 Edobashi Tsu city, Mie Pref. 514-8507	+81-(0)59-232-1111
University Hospital		
Faculty of Engineering	1577 Kurimamachiya-cho Tsu city, Mie Pref. 514-8507	+81-(0)59-232-1211
Faculty of Bioresources		
Kii-Kuroshio Bio-Regional Field Science Center	2072-2 Takano-cho Tsu city, Mie Pref. 514-2221	+81-(0)59-230-0044
Farm Station		
Forest Station		
Fishery Research Station	2735 Kawakami Misugi-cho Tsu city, Mie Pref. 515-3532	+81-(0)59-274-0135
Training Ship “SEISUI MARU”	4190-172 Wagu Shima-cho Shima city, Mie Pref. 517-0703	+81-(0)599-85-4604
Training Ship Base	Matsusaka Port Auto Shipping Telephone INMARSAT Telephone 1819-18 Tsukiji Okuchi-cho Matsusaka city, Mie Pref. 515-0001	+81-(0)598-50-1066 +81-(0)90-3022-8767 001-010-870-764623655
Graduate School of Regional Innovation Studies	1577 Kurimamachiya-cho Tsu city, Mie Pref. 514-8507	+81-(0)59-232-1211
Environmental Preservation Center		
Yokkaichi Community-based Research Center	c/o Mie-Hokusei Local Industry Development Foundation (Jibasan Mie), 1-3-18, Yasujima Yokkaichi city, Mie Pref. 510-0075	+81-(0)59-353-8260
Iga Community-based Research Center	c/o Regional Industrial Creation Center by Industry-academia-government Collaboration “Yume Techno Iga” 1-3-3 Yumegaoka Iga city, Mie Pref. 518-0131	+81-(0)595-41-1071