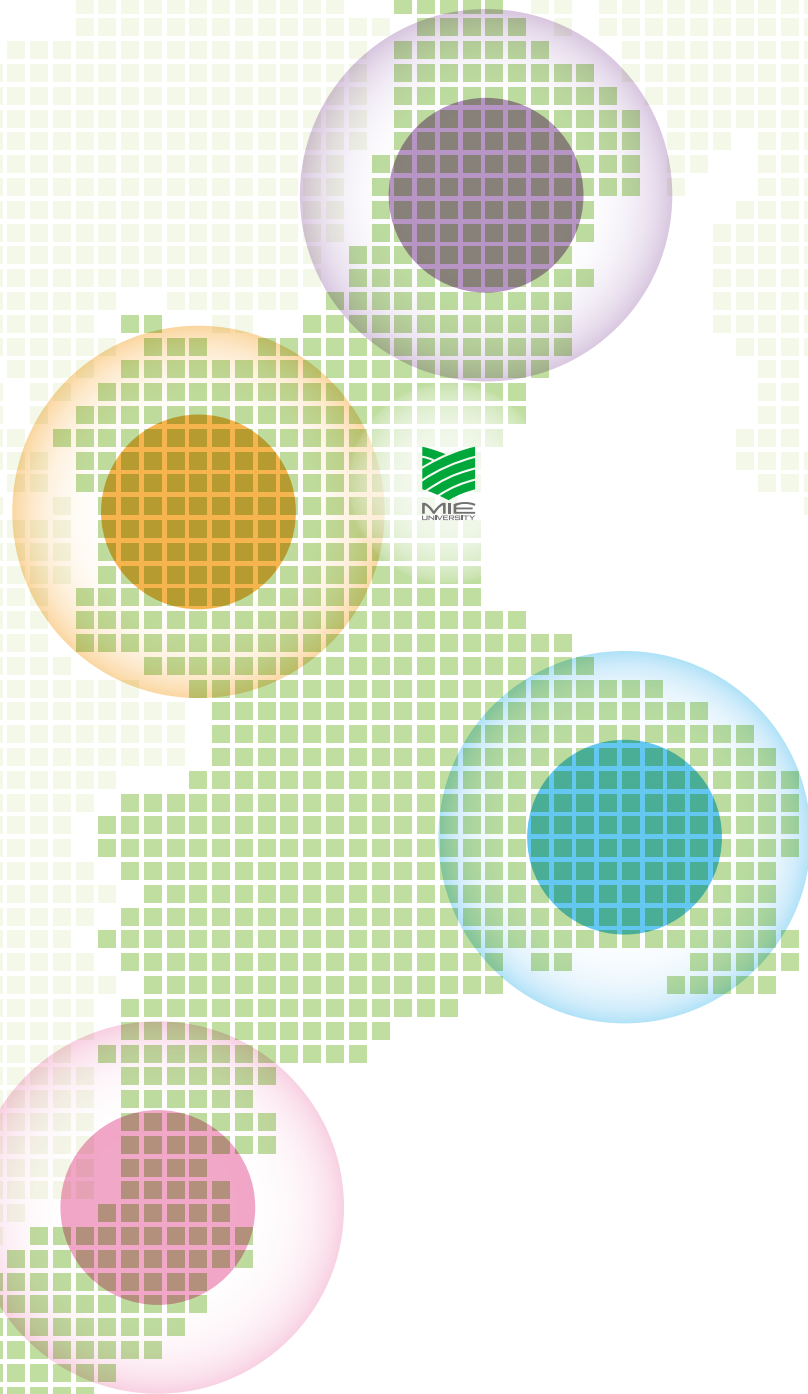


Outline of **MIE** University 2017



MIE UNIVERSITY



Outline of Mie University

(As of May 1, 2017)

■ President, Trustees, and Auditors	8 persons	■ Revenues	44,257 million yen
■ Faculty Members	767 persons	■ Expenses	44,257 million yen
■ Staff Members	1,139 persons		*2017 Academic Year
■ Undergraduate Students	6,066 persons	■ Land Area	5,511,692m ²
■ Graduate Students	1,184 persons	■ Building Area	322,475m ²
■ International Students	295 persons	■ Library Holdings	946,467 books
■ Partner Institutions on University Level	68 Institutions in 26 Countries/Areas		*As of March 31, 2017
■ Partner Institutions on Faculty Level	48 Institutions in 25 Countries/Areas		

Academic Calendar for 2017

■ Academic Year Starts/ Spring Semester Starts	Apr. 1	■ Fall Semester Starts	Oct. 1
■ Spring Vacation	Apr. 1 - 10	■ Winter Vacation	Dec. 23 - Jan. 4
■ Entrance Ceremony	Apr. 7	■ Graduation Ceremony	Mar. 26
■ Foundation Anniversary of Mie University	May 31	■ Fall Semester Ends/ Academic Year Ends	Mar. 31
■ Summer Vacation	Aug. 7 - Sep. 30		
■ Spring Semester Ends	Sep. 30		

Contents

● Philosophy	3
● The Six Prospects for Building Mie University	4
● Governing Structure	5
● Operational Organization Chart	6
● Historical Chart	7
● Administrative Staff	9
● Faculties and Graduate Schools	11
● Institutes for Education and Research	14
● Education	15
● Research	17
● Links with Society and Contributions to Local Community	18
● International Relations	21
● University Library	23
● Information Infrastructure	24
● Environment	25
● University Hospital	27

《Data》

● Number of Staff Members	29
● Budget (Academic Year 2017)	30
● Grant-in-Aid for Scientific Research & Research in Cooperation with Private Sectors (2016)	30
● Admission Capacity and Number of Students	31
● Schools Affiliated with Faculty of Education	31
● Number of Scholarship Grantees	32
● Numbers of 2017 Applicants and Entrants	33
● Applicants and Entrants by Prefectures (Undergraduate)	33
● Number of 2016 Graduates and Number of Degrees Conferred	34
● Career Paths of 2016 Graduates	35
● Industries (Faculties)/Region (Faculties)	35
● Employment Situation by Prefectures (Faculties)	36
● Number of International Students	37
● International Exchange Projects (Grant Recipients)	37
● International Exchange	38
● University Library/University Hospital	39
● Welfare Facilities	40
● Land and Buildings	40
● Mutual Cooperation Agreement with Community	41
● Extension Courses and Others	41
● Mie University Regional Contribution Activities	42
● Mie University Research Centers	42
● Campus Map	43
● Location of Campus/Access	45
● Campus Addresses	46



Mie University is located in a superb natural environment, surrounded by the waters of Ise Bay and the verdant forests of the Suzuka and Nunobiki Mountains, under an expanse of clear sky dotted with white clouds. On a campus blessed with the beauty of nature, we work to cultivate individuals with the character and capabilities to become future leaders in society, and we pursue advanced specialized research driven by creativity and open-mindedness.

In today's Japan, the trends of a low birthrate and ageing society, population decline, and globalization continue to accelerate. Among the numerous problems that have been identified are the growing disparity between urban and rural areas, deepening energy and environmental issues, and economic uncertainty. It is precisely in difficult times such as these that great expectations are placed on universities as "Centers of Communities." At Mie University, we are doing our utmost to share our educational and research outcomes with the wider society and contribute to social advancement and revitalization.

Yoshihiro Komada, M.D., Ph.D.
President of Mie University

Philosophy

As a center of learning, Mie University strives to contribute towards the "Development of Human Resources and Research," enhancing the "Welfare of the Society," through the "Harmonious Coexistence of Nature and Mankind."

From Mie to the World!

We provide world-class community-based education and research results through harmonious coexistence of nature and mankind



The school emblem has a double ring structure; one ring represents an ear of rice for a rewarding life; the other ring of waves, Rourin, represents the philosophy of Mie University, "Sansui: the three greens of sky, waves and mountain."

This double ring structure expresses Mie University's philosophy and wishes of long friendships and productive lives for its alumni.

In addition, the emblem is generally symmetrical, but the asymmetrical aspect of the design shows the free and progressive spirit of Mie University.

Mie University's predecessor, Mie Normal School, was founded in 1874 and is the oldest of the existing five faculties.

Management and Innovation with a Sense of Security

● Leadership of the President

We advance the "Establishment of sustainable, competitive and a continuously enriching University" stated in the third medium-term goal as well as the University policy to protect the livelihood of faculty and staff members under the leadership of the President.

● Advancement of Analytical and Planning Ability

We strengthen the capability of Institutional Research (IR) and advocate transparency based on appropriate job analysis.

● Reinforcement of Financial Basis

We manage our University Hospital effectively and stably to reinforce our financial basis.

Higher Education for Future Society

● Clarification of the Role of University

We clarify our role at Mie University, to implement our educational and research activities, as the sole national university in this prefecture.

● Cultivation of Leaders

We cultivate independent leaders to engage society by our principle of "The Ability to Empathize," "The Ability to Think," "The Ability to Communicate," and "The Ability to Live."

● Nurture of Advanced Professionals

We foster well-educated and advanced professionals by offering specializations in education and the liberal arts for undergraduate and graduate students.

Career Support with Friendly Environment for Women and Young People

● Friendly Working Environment for Families with Small Children

We provide a friendly working environment for families with small children, maintain and improve our childcare facility, offer sick childcare and an after-school care facility. We also address the time-sharing system.

● Active Promotion of Female Faculty and Staff Members

We promote career assistance to female workers, and are mindful of issues women face in the workplace.

● Support of Improvement for Young Faculty and Staff Members

We are expanding opportunities for tenure, research assistance, student development and faculty development to assist academic and professional development.

Regional Innovation from University

● Mie University as Hub Social Action

We further advance innovative social activities for the enhancement of Mie University as a center for regional development.

● Promotion of Industry Academia Government and Community Collaboration

We pursue positive relations with industries, government, and NPOs, and the establishment of a regional universities network. Additionally, we bring the creation of intellectual property and the generation of innovative technology to realization.

● Regional Creation led by University

We contribute towards a sustainable promotion of local industries, enhancement of community medicine, and disaster mitigation in an effort to increase regional attractiveness.

Unique Academic Research with Variation

● Provision of Research Basis

For the better future of Japan, we respect "diversity research" and maintain the research basis and research fund basis, which maximize the motivation and capability of researchers.

● Activation of Multi-integrated Research

We inspire new passion for multi-integrated research taking advantage of our mid-sized university.

● Contribution toward Society with Research Results

We aim to contribute towards the sustainable development of regional and global communities by sharing our research outcomes.

Global Campus Living Together with Nature

● Globalization of Education and Research Environment

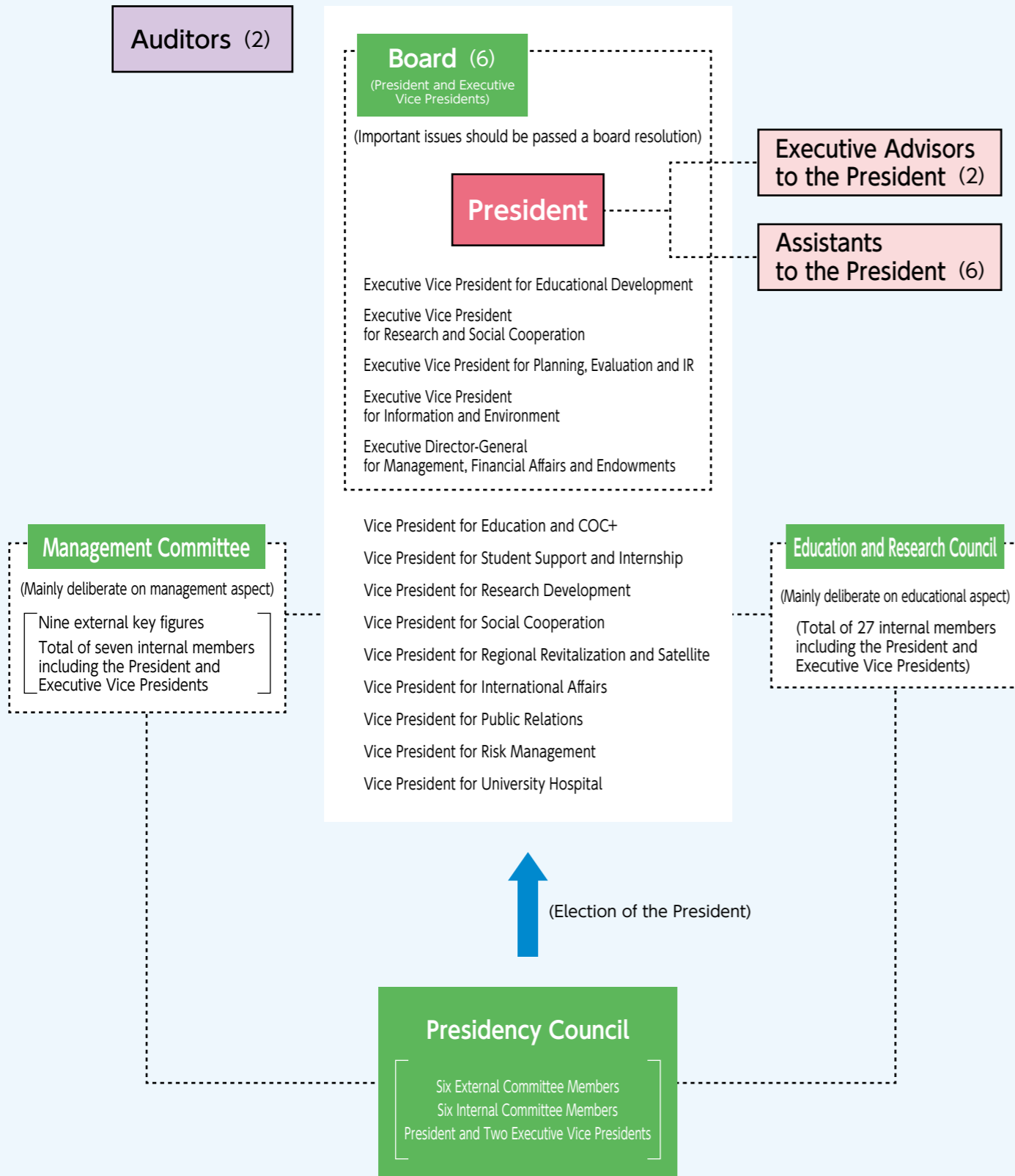
We work towards the creation of a global campus attracting international students, inviting foreign researchers, and establishing overseas offices.

● Achievement of Education and Research Standards for Global Recognition

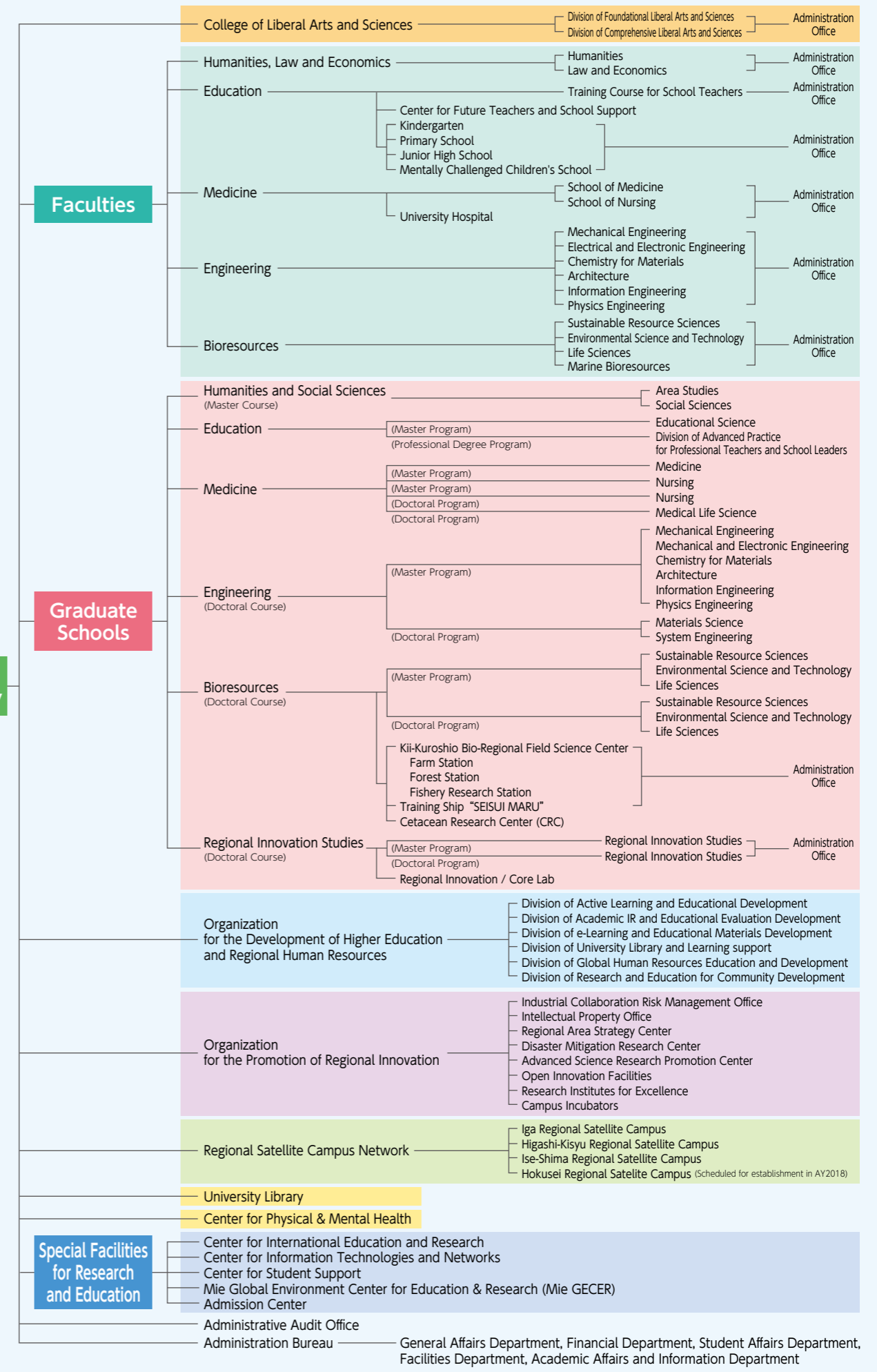
We promote internationally compatible education, studying abroad for students, overseas training for faculty and staff members, and international collaborative research.

● Green Campus with Rich Nature

We aim to establish a comfortable green campus with rich nature for all students at Mie University.

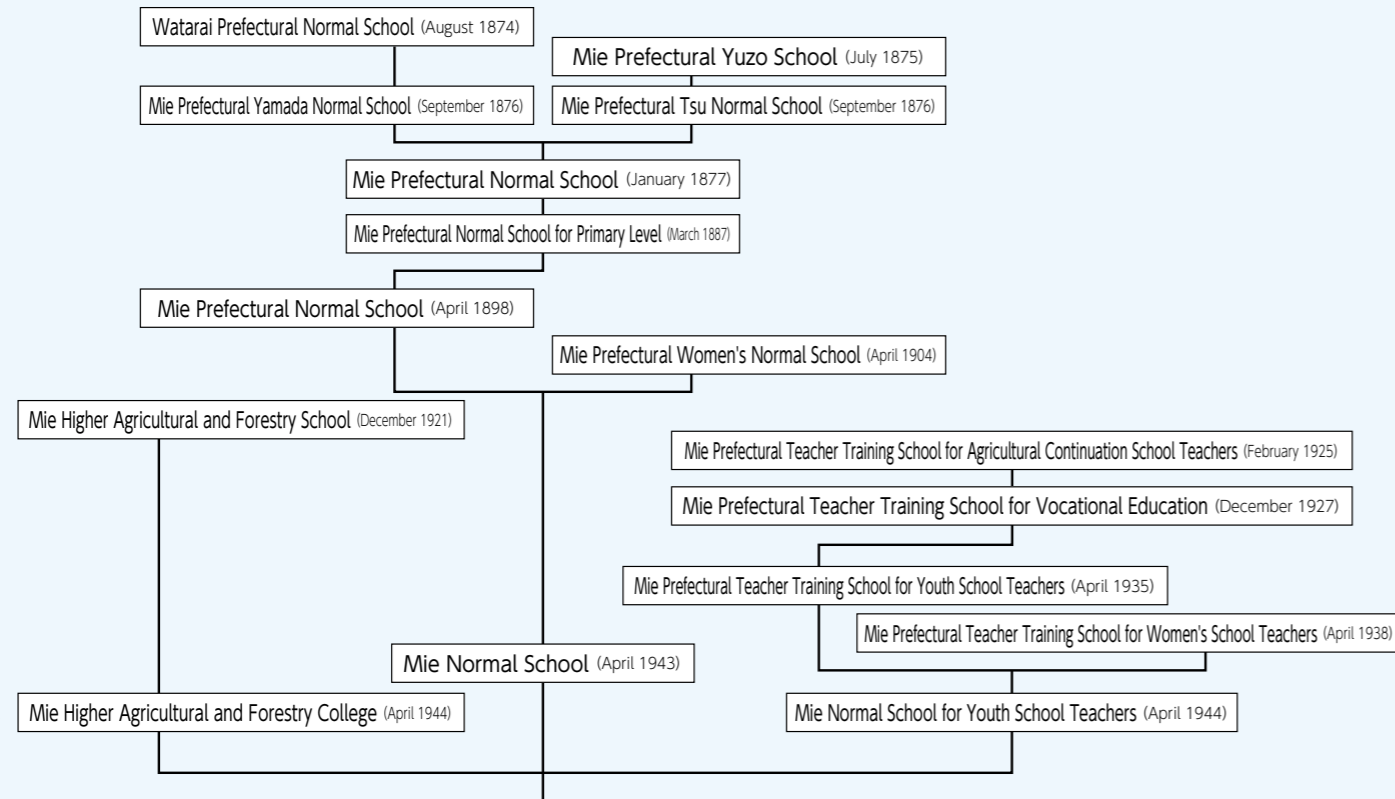


Mie University



Historical Chart

1874



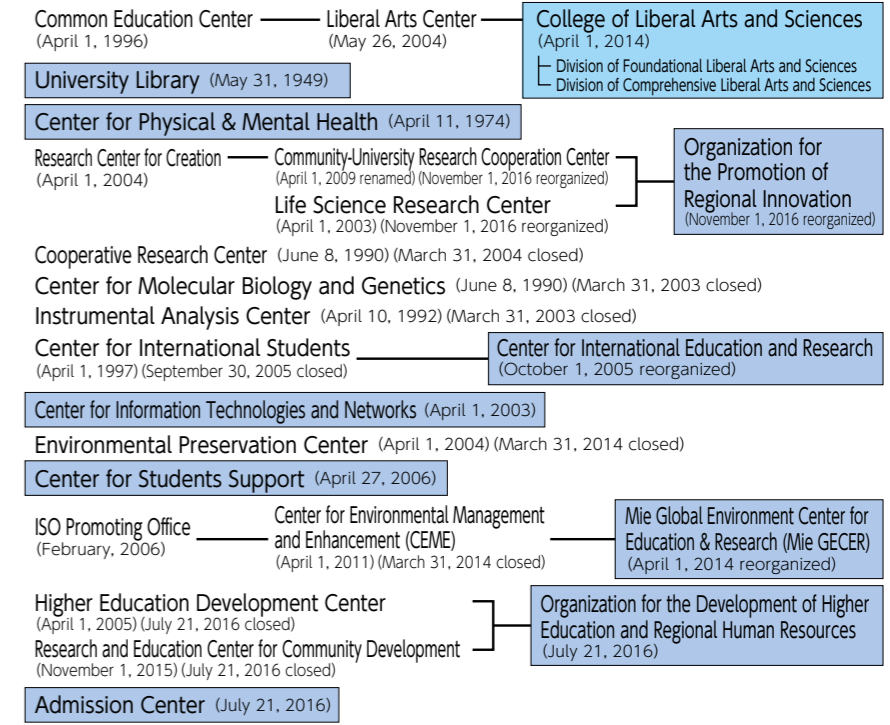
Sansui Hall, Registered as a Cultural Property in Japan



Raymond Hall, Registered as a Cultural Property in Japan

Mie Prefectural Medical School (December 1943)

Mie Prefectural Medical College (June 1947)



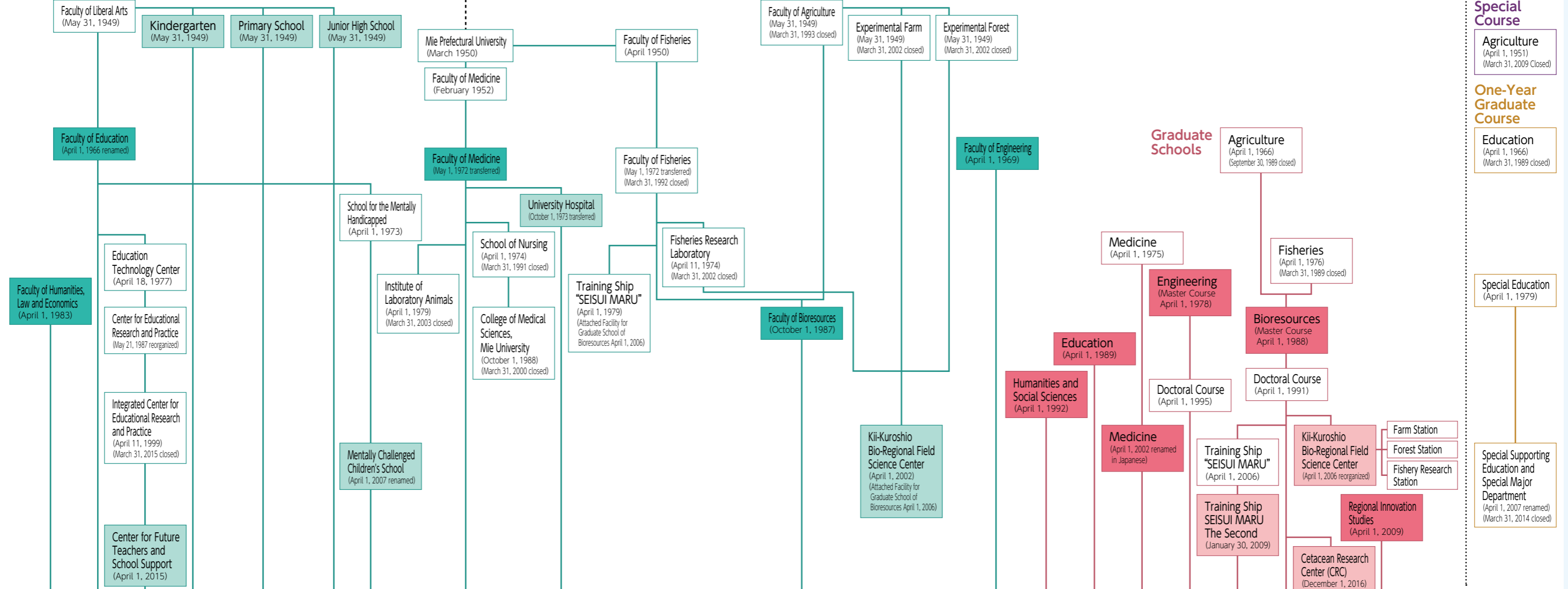
1912

1945

Mie University (May 31, 1949)

National University Corporation Mie University (April 1, 2004)

Faculties



1989

Board

President	KOMADA, Yoshihiro
Executive Vice President for Education	YAMAMOTO, Toshihiko
Executive Vice President for Research and Social Cooperation	TSURUOKA, Shinji
Executive Vice President for Planning, Evaluation and IR	ONISHI, Yasumitsu
Executive Vice President for Information and Environment	KANO, Satoshi
Executive Director-General (Management, Financial Affairs and Endowments)	BITO, Hiroyuki
Auditor General for Operating Audit	HATTORI, Masaaki
Auditor for Financial Audit/Part-time	YAMANAKA, Toshiyuki
Vice President for Education and COC+	TOGASHI, Kenji
Vice President for Student Support and Internship	NOZAKI, Tetsuya
Vice President for Research Development	HASHIMOTO, Atsushi
Vice President for Social Cooperation	NISHIMURA, Norihiro
Vice President for Regional Revitalization and Satellite	MATSUDA, Yuko
Vice President for International Affairs	HORI, Hiroki
Vice President for Public Relations	YOSHIMOTO, Toshiko
Vice President for Risk Management	SHINPO, Hideto
Vice President for University Hospital	ITO, Masaaki

Assistant to the President

Assistant to the President for Academic Affairs	KARITA, Shuichi
Assistant to the President for Entrance Examination	IIDA, Kazuo
Assistant to the President for Research Development	TOMITA, Masahiro
Assistant to the President for International Affairs	YOSHIMATSU, Takao
Assistant to the President for Disaster Mitigation	HATANAKA, Shigemitsu
Assistant to the President for Information	YAMAMORI, Kazunori

Executive Advisor to the President

Executive Advisor to the President	UCHIDA, Atsumasa
Executive Advisor to the President	SHIKU, Hiroshi

Advisor to the President

Advisor to the President	HIDAKA, Hiroyoshi
Advisor to the President	MURATA, Yoshimasa

Management Committee

(Internal Committee Members)

President	KOMADA, Yoshihiro
Executive Vice President for Education	YAMAMOTO, Toshihiko
Executive Vice President for Research and Social Cooperation	TSURUOKA, Shinji
Executive Vice President for Planning, Evaluation and IR	ONISHI, Yasumitsu
Executive Vice President for Information and Environment	KANO, Satoshi
Executive Director-General (Management, Financial Affairs and Endowments)	BITO, Hiroyuki
Director for University Hospital	ITO, Masaaki

(External Committee Members)

Mie Medical Association Chair	AOKI, Shigetaka
Advisor, Mie Television Broadcasting Co.,Ltd	SHIDA, Yoshihiro
Governor of Mie Prefecture	SUZUKI, Eikei
Director, Tokyo National Museum	ZENIYA, Masami
Director, Suzuka University of Medical Science	TAKAGI, Junichi
President, Hikarikikai Seisakusho	NISHIOKA, Keiko
International Conglomerate of Distribution for Automobile Holdings Co.,Ltd. President and Representative Director	MUKAI, Hiromitsu
Professor Emeritus, Mie Prefectural College of Nursing	MURAMOTO, Junko
Deputy President, Hyakugo Bank	WATANABE, Yoshihiko

Education and Research Council

President	KOMADA, Yoshihiro
Executive Vice President for Education	YAMAMOTO, Toshihiko
Executive Vice President for Research and Social Cooperation	TSURUOKA, Shinji
Executive Vice President for Planning, Evaluation and IR	ONISHI, Yasumitsu
Executive Vice President for Information and Environment	KANO, Satoshi
Executive Director-General (Management, Financial Affairs and Endowments)	BITO, Hiroyuki
Vice President for Education and COC+	TOGASHI, Kenji
Vice President for Student Support and Internship	NOZAKI, Tetsuya
Vice President for Research Development	HASHIMOTO, Atsushi
Vice President for Social Cooperation	NISHIMURA, Norihiro
Vice President for Regional Revitalization and Satellite	MATSUDA, Yuko
Vice President for International Affairs	HORI, Hiroki
Vice President for Public Relations	YOSHIMOTO, Toshiko
Vice President for Risk Management	SHINPO, Hideto
Vice President for University Hospital	ITO, Masaaki
Director, College of Liberal Arts and Sciences	INOKUCHI, Yasushi
Dean, Faculty of Humanities, Law and Economics	AJKI, Kazuhiro
Dean, Faculty of Education	TURUHARA, Kiyoshi
Dean, Graduate School of Medicine	KATAYAMA, Naoyuki
Dean, Graduate School of Engineering	SHIMIZU, Makoto
Dean, Graduate School of Bioresources	UMEKAWA, Hayato
Dean, Graduate School of Regional Innovation Studies	MIYAKE, Hideto
Professor, Faculty of Humanities, Law and Sciences	KODAMA, Shigeru
Professor, Faculty of Education	YAMAGUCHI, Yasuhiro
Professor, Graduate School of Medicine	OGATA, Masato
Professor, Graduate School of Engineering	ITO, Tomonori
Professor, Graduate School of Bioresources	KOHBARA, Jun

Administration Bureau

Executive Director-General	BITO, Hiroyuki
Head, Administrative Audit Office	MORIMOTO, Shuichi
Director, General Affairs and Planning Department	SONOBE, Kuniteru
Head, General Affairs Office	YAMASHITA, Ikuo
Head, General Planning Office	KUREBAYASHI, Takaaki
Head, Personnel and Labor Office	KIMURA, Nobuyuki
Director, Financial Department	ODANI, Naokazu
Head, Financial Planning Office	HATA, Morito
Head, Management Office	IZAWA, Katsuhiro
Head, Contract Office	KUSAKAWA, Masahiko
Director, Student Affairs Department	NAKAJIMA, Hideo
Vice Director, Student Affairs Department	MUROYA, Morio
Head, Educational Affairs Office	MUROYA, Morio
Head, College of Liberal Arts and Sciences	MIZUTANI, Satoko
Head, Student Support Office	KUSAKAWA, Yayoi
Head, Career Support Office	TOMISHIMA, Yoshio
Head, Admission Office	INAGAKI, Yoshikazu
Head, Organization for the Development of Higher Education and Regional Human Resources	NAKAJIMA, Hideo
Director, Facilities Department	KUSA, Kazuhiro
Head, Facility Planning Office	OTA, Tsuyoshi
Head, Facility Management Office	YAMADA, Tatsuya
Head, Facility Maintenance Office	HASHIMOTO, Takeshi
Director, Academic Affairs and Information Department	UEKAWA, Masaishi
Head, Research Promotion Office	KUBO, Tomohiro
Head, Social Cooperation Management Office	SAKAI, Takashi
Head, Management Information & Library Office	MAEKAWA, Atsuko
Head, International Relations Office	AKIHO, Satoshi

College of Liberal Arts and Sciences

Director, College of Liberal Arts and Sciences	INOKUCHI, Yasushi
Vice Director, College of Liberal Arts and Sciences	AYANO, Seiki

Organization for the Development of Higher Education and Regional Human Resources

Director, Organization for the Development of Higher Education and Regional Human Resources	YAMAMOTO, Toshihiko
---	---------------------

Organization for the Promotion of Regional Innovation

Director, Organization for the Promotion of Regional Innovation	TSURUOKA, Shinji
---	------------------

Regional Satellite Campus Network

Director, Regional Satellite Campus Network	KOMADA, Yoshihiro
---	-------------------

University Library

Director	KANO, Satoshi
----------	---------------

Director for Each Center

Director, Center for International Education and Research	HORI, Hiroki
Director, Center for Information Technologies and Networks	NARUSE, Hiroshi
Director, Center for Student Support	NOZAKI, Tetsuya
Director, Mie Global Environment Center for Education & Research (Mie GECER)	KANO, Satoshi
Director, Admission Center	YAMAMOTO, Toshihiko
Director, Center for Physical & Mental Health	SHINPO, Hideto

Faculty of Humanities, Law and Economics

Dean	AJKI, Kazuhiro
Vice Dean	FUJITA, Shinya
Head, Office for Faculty of Humanities, Law and Economics	ONISHI, Norihiro

Faculty of Education

Dean	TSURUHARA, Kiyoshi
Vice Dean	ITO, Nobunari
Head, Faculty of Education	MIYAZAKI, Tetsuo
Headmaster, Primary School	MATSUURA, Hitoshi
Headmaster, Junior High School	MAKIHARA, Yoshikazu
Headmaster, Mentally Challenged Children's School	YAGI, Norio
Headmaster, Kindergarten	MATSUMOTO, Akihiko
Director, Integrated Center for Educational Research and Practice	NITTA, Takashi
Head, Office for Attached Schools, Faculty of Education	SHIMO, Hajime

Graduate School of Medicine and Faculty of Medicine

Dean	KATAYAMA, Naoyuki
Vice Dean	YAMAZAKI, Hidetoshi
Vice Dean	SAKUMA, Hajime

University Hospital

Director	ITO, Masaaki
Vice Director	ISAJI, Suuji
Vice Director	IKEDA, Tomoaki
Vice Director	SUDO, Akihiro
Vice Director	KONDO, Mineo
Vice Director/Director for School of Nursing	ETOH, Yumi
Vice Director	KANEKO, Toshihiro
Vice Director	OGISU, Osamu
Assistant to the Director	SHINPO, Hideto
Assistant to the Director	TAKEUCHI, Kazuhiko
Director, Pharmacy Division	OKUDA, Masahiro
Director, General Affairs Office	OGISU, Osamu
Vice Director, General Affairs Office	YAMADA, Hiroyuki
Head, General Affairs Office	YAMAZAKI, Haruo
Head, Management Office	YAMADA, Hiroyuki
Head, Student Affairs Office	KOBAYASHI, Hiroshi
Head, Medical Affairs Office	ITO, Atsushi

Graduate School of Engineering and Faculty of Engineering

Dean	SHIMIZU, Makoto
Vice Dean	SUZUKI, Yasuyuki
Head, Office of Graduate School & Faculty of Bioresources	MIZUTANI, Takashi

Graduate School of Bioresources and Faculty of Bioresources

Dean	UMEKAWA, Hayato
Vice Dean	MATSUMURA, Naoto
Vice Dean	TOKUDA, Hiromi
Head, Office for Graduate School & Faculty of Bioresources	SAKURAI, Masaya
Director, Kii-Kuroshio Bio-regional Field Science Center	HIRATSUKA, Shin
Director, Training Ship "SEISUI MARU"	MAEKAWA, Yoichi
Head, Office for Graduate School & Faculty of Bioresources	TANAKA, Masaaki
Director, Cetacean Research Center (CRC)	YOSHIOKA, Motoi

Graduate School of Regional Innovation Studies

Dean	MIYAKE, Hideto
Vice Dean	KOBAYASHI, Issei

Presidents

1st	OKAIDE, Yukio	May 31, 1949 - May 31, 1957
Acting	NAKANO, Seisaku	June 1, 1957 - Dec. 9, 1957
2nd	NOMURA, Takee	Dec. 10, 1957 - Dec. 9, 1966
Acting	KADOYA, Tatsujiro	Dec. 10, 1966 - Feb. 28, 1967
3rd	NODA, Tokichi	Mar. 1, 1967 - Feb. 28, 1970
Acting	IMACHI, Isamu	Mar. 1, 1970 - Mar. 16, 1970
4th	NODA, Tokichi	Mar. 17, 1970 - Nov. 8, 1971
Acting	IWAMOTO, Kiichi	Nov. 9, 1971 - June 30, 1972
Acting	SAKAKIBARA, Shingo	July 1, 1972 - Feb. 2, 1974
5th	MIKAMI, Yoshiki	Feb. 10, 1974 - Feb. 9, 1980
6th	IZAWA, Tadasu	Feb. 10, 1980 - Feb. 9, 1986
7th	TAKEDA, Susumu	Feb. 10, 1986 - Feb. 9, 1992
8th	TAKEMURA, Yasuo	Feb. 10, 1992 - Feb. 9, 1998
9th	YATANI, Ryuichi	Feb. 10, 1998 - Mar. 31, 2004
10th	TOYODA, Nagayasu	Apr. 1, 2004 - Mar. 31, 2009
11th	UCHIDA, Atsumasa	Apr. 1, 2009 - Apr. 1, 2015
12th	KOMADA, Yoshihiro	Apr. 1, 2015 -

College of Liberal Arts and Sciences

At Mie University, students are to take subjects offered by the College of Liberal Arts and Sciences and the five faculties. The College of Liberal Arts and Sciences offers two curricula: a "Common Curriculum" which is provided for all students, and a "Faculty-specific Curriculum."

In the "Common Curriculum," our mission is "nurturing autonomous and active learning skills" and "training for globalization." We provide the Foundational Liberal Arts and Sciences courses (Active-Learning Seminar, Foreign Language, Foreign Studies, and Health and Physical Sciences), as well as Comprehensive Liberal Arts and Sciences courses (International and Modern Social Sciences, and Modern Sciences).

In the "Faculty-specific Curriculum," we provide foundational education and specialized career education for particular subjects.



Division
Foundational Liberal Arts and Sciences, Comprehensive Liberal Arts and Sciences

Faculty of Humanities, Law and Economics/ Graduate School of Humanities and Social Sciences

Through education and research of the humanities and social studies, we develop student abilities to contribute towards the development of regional culture, explore ideas of what it means to be human and theories of social structures, and take initiatives in solving social problems.



Faculty of Humanities, Law and Economics (2 Departments · 4 Chairs/2 Courses)		
	Departments	Chairs/Courses
Undergraduate	Department of Humanities	Japanese Studies, Asian and Oceanian Studies, European and Mediterranean Studies, American Studies
	Department of Law and Economics	Law and Politics Course, Contemporary Economics Course
Graduate School of Humanities and Social Sciences (2 Divisions)		
	Divisions	
Master Course	Area Studies Course	
	Social Sciences Course	

Faculty of Education/Graduate School of Education

Taking advantage of comprehensive study in the Faculty of Education, students develop expertise in the humanities, social and natural sciences, education, and the professional skills of their respective fields.



Faculty of Education (1 Department/13 Courses)		
	Department	Courses
Undergraduate	Training Course for School Teachers	Language and Literature Education, Social Studies Education, Mathematical, Information Science Education, Science Education, Music Education, Fine Arts Education, Health and Physical Education, Technology/Manufacturing Education, Home Economics Education, English Language Education, Special Support Education, Science of Early Childhood Education, School Education
Graduate School of Education (2 Major · 5 Areas/2 Courses)		
	Major	Areas/Courses
Master Course	Educational Science	School Education, Special Support Education, Humanities and Social Studies Education, Science, Mathematics and Living Sciences Education, Arts and Physical Education
Professional Degree Program	Division of Advanced Practice for Professional Teachers and School Leaders	School Management Skills Development Course, Educational Practice Development Course

Graduate School of Medicine/Faculty of Medicine

Students develop a sense of social responsibility and ethics, creative and critical cognitive skills, and strive towards an advancement of human health and welfare which translate at local and global levels of society.



Graduate School of Medicine			
	Majors	Divisions	Departments
Doctoral Program & Master Program	Medical Life Sciences (Doctoral Program)	Basic Medicine Sciences	Neural Regeneration and Cell Communication, Developmental and Regenerative Medicine, Biochemistry and Proteomics, Stem Cell and Developmental Biology, Molecular Physiology, Pathology and Matrix Biology, Oncologic Pathology, Integrated Pharmacology, Molecular and Cellular, Molecular Pathology and Adhesion Biology, Microbiology and Molecular Genetics, Immunology, Medical Zoology, Environmental and Molecular Medicine, Public Health and Occupational Medicine, Forensic Medicine and Sciences, Medical Education, Immunoregulation, Social Medicine, Animal Functional, Medical Genomics and Proteomics
		Clinical Medicine Sciences	Cardiology and Nephrology, Hematology and Oncology, Gastroenterology and Hepatology, Pulmonary and Critical Care Medicine, Diabetes, Metabolism and Endocrinology, Neurology, Family Medicine, Psychiatry, Pediatrics, Dermatology, Radiology, Molecular and Laboratory, Clinical Pharmacy and Biopharmaceutics, Hepatobiliary Pancreatic and Transplant Surgery, Gastrointestinal and Pediatric Surgery, Thoracic and Cardiovascular Surgery, Breast Surgery, Gynecologic Pelvic Surgery and Oncology, Neurosurgery, Musculoskeletal Surgery, Multimodality Therapy for Cancer, Nephro-Urologic Surgery and Andrology, Ophthalmology, Otorhinolaryngology, Head & Neck Surgery, Oral and Maxillofacial Surgery, Plastic Surgery, Anesthesiology and Critical Care Medicine, Clinical Anesthesiology, Emergency and Disaster Medicine, General Internal Medicine, Neonatology, Child Medical Health and Development, Health Promotion and Disease Prevention
	Medicine (Master Program)	(Industry-Academic-Government Cooperation) Immuno-Gene Therapy	Immuno-Gene Therapy
		(Industry-Academic-Government Cooperation) Clinical Human Research Promotion and Drug Development	Human Research Promotion and Drug Development
		(Industry-Academic-Government Cooperation) Innovative Neuro-Intervention Radiology	Innovative Neuro-Intervention Radiology
		(Industry-Academic-Government Cooperation) Systems Pharmacology	Systems Pharmacology
		(Endowed Department) Dementia Prevention and Therapeutics	Dementia Prevention and Therapeutics
		(Endowed Department) Innovative Surgery	Innovative Surgery
		(Endowed Department) Orthopedics and Sports Medicine	Orthopedics and Sports Medicine
		(Endowed Department) Spinal Surgery and Medical Engineering	Spinal Surgery and Medical Engineering
(Endowed Department) Advanced Diagnostic Imaging	Advanced Diagnostic Imaging		
(Endowed Department) Advanced Cancer Treatment Studies	Advanced Cancer Treatment Studies		
(New Paradigms-Establishing Centers for Fostering Medical Researchers of the future) Department of Education and Research in Family and Community Medicine	Community Medical Care		
Master Program	Nursing	Fundamental Nursing	Nursing Education, Fundamental of Nursing
		Clinical Nursing	Oncology Nursing, Adult Health Nursing, Maternal Nursing, Child Health Nursing, Gerontological Nursing
		Community Health Nursing	Psychiatric Nursing, Stress and Health Sciences, Community Health Nursing
Doctoral Program		Nursing Education, Fundamental Practical Nursing, Adult and Elderly Health Nursing, Maternal and Child Health Nursing, Psychiatry, Stress and Health Sciences, Community Health Nursing	
Faculty of Medicine (2 Schools)			
	Schools	Department	Subjects
Under-graduate	Medicine	Basic Medical Sciences, Clinical Medical Sciences	Anatomy, Biochemistry, Physiology, Pathology, Pharmacology, Molecular Pathology, Microbiology, Immunology, Medical Zoology, Hygiene, Public Health, Forensic Medicine, Medical Education, Internal Medicine, Neurology Study, Family Medicine, Psychiatry, Pediatric, Dermatology, Radiology, Molecular and Laboratory, Pharmaceutics, General Surgery, Gynecologic pelvic surgery and oncology, Neurosurgery, Orthopedics, Urology, Ophthalmology, Otorhinolaryngology, Oral Surgery, Anesthesiology, Emergency and Disaster Medicine
		Nursing	Fundamental Nursing, Adult/Psychiatric Nursing, Maternal and Child Nursing, Community/Gerontological Nursing

Graduate School of Engineering/Faculty of Engineering

Students in the Graduate School and Faculty of Engineering develop a sense of social responsibility and ethics, creative and critical cognitive skills, and strive towards contributions for the harmonious coexistence of humans and nature through research on science and technology.



Graduate School of Engineering (8 Departments/20 Chairs)		
	Departments	Chairs
Master Program	Mechanical Engineering	Quantum Engineering and Electromechanics, Advanced Materials and Processes, Environmental Energetics
	Electrical and Electronic Engineering	Electrical System Engineering, Information and Communication Systems, Electronic Material Science and Technology
	Chemistry for Materials	Molecular Design, Biological and Functional Chemistry, Materials Science
	Architecture	Architectural Design, Architectural Management
	Information Engineering	Computer Science, Artificial Intelligence
	Physics Engineering	Quantum Mechanical Engineering, Nanotechnology
Doctoral Program	Materials Sciences, Systems Engineering	Materials Property, Materials Chemistry, Electrical Information System, Design System, Recycling System Design
Faculty of Engineering (6 Departments/15 Chairs)		
	Departments	Chairs
Under-graduate	Mechanical Engineering	Quantum Engineering and Electromechanics, Advanced Materials and Processes, Environmental Energetics
	Electrical and Electronic Engineering	Electrical System Engineering, Information and Communication Systems, Electronic Material Science and Technology
	Chemistry for Materials	Molecular Design, Biological and Functional Chemistry, Materials Science
	Architecture	Architectural Design, Architectural Management
	Information Engineering	Computer Science, Artificial Intelligence
	Physics Engineering	Quantum Mechanical Engineering, Nanotechnology

Graduate School of Bioresources/Faculty of Bioresources

With the coexistence of nature and mankind in mind, we established studies to explore the appropriate development and the utilization of bioresources.



Graduate School of Bioresources (Master Program : 3 Divisions/9 Chairs, Doctoral Program : 3 Divisions/6 Chairs)		
	Divisions	Chairs
Master Program	Major in Sustainable Resource Sciences	Agrobiology, Forest Resources and Environmental Science, International Regional Resource Science
	Major in Environmental Science and Technology	Geosciences, Environment Oriented Information and System Engineering, Rural and Environmental Engineering
	Major in Life Sciences	Biochemistry and Biotechnology, Marine Biotechnology, Marine Biology
Doctoral Program	Major in Sustainable Resource Sciences	Sustainable Resource System Sciences, Int'l Sustainable Resource Science
	Major in Environmental Science and Technology	Atmosphere and Sustainable Earth System Science, Environmental and Agricultural Engineering
	Major in Life Sciences	Applied Biological Chemistry, Marine Biological Science
Faculty of Bioresources (4 Divisions/7 Courses)		
	Divisions	Courses
Under-graduate	Department of Sustainable Resource Sciences	Course of Biology for Agriculture and Forestry, Course of International Resources & Development
	Department of Environmental Science and Technology	Course of Earth System Science, Course of Rural and Environmental Design
	Department of Life Sciences (2017, Not accepting new applications)	Course of Applied Biological Chemistry and Biotechnology, Course of Marine Biological Science
	Life Science and Chemistry (2018, Newly established)	Course of Biochemistry and Biotechnology, Course of Marine Biotechnology
	Department of Marine Bioresources (2018, Newly established)	Course of Marine Bioresources

Graduate School of Regional Innovation Studies

The Graduate School of Regional Innovation Studies was established in order to bridge the gap which exists in contemporary industrial society — and especially in local industrial circles such as those in the Mie region — between social needs and graduate school education, and to foster the development of individuals with the capabilities to help halt regional decline. The school cultivates, and sends out into regional society, research and development professionals who are skilled in project management as well as social entrepreneurs capable of generating something out of nothing in their local communities.



Graduate School of Regional Innovation Studies (2 Divisions/4 Units)		
	Divisions	Units
Master Program	Regional Innovation Studies	Engineering Innovation Unit, Bioinnovation Unit, Social Innovation Unit
Doctoral Program	Regional Innovation Studies	Regional Development Unit

Institutes for Education and Research

Institution	Purpose and Research
Organization for the Development of Higher Education and Regional Human Resources	Aims to advance creation and development of educational activities directed toward attainment of Mie University's educational objectives through collaboration and consultation with the university's various divisions, and to support initiatives for quality assurance of degree programs and education in order to cultivate regional human resources who can contribute to regional revitalization.
Organization for the Promotion of Regional Innovation	With a view to promoting regional innovation, aims to promote and support research activities that are strategically advanced by Mie University, in order to enable wider society to share outcomes achieved through utilization of the university's education and research resources, and to support human resources development activities so as to contribute to advancement of the region.
Regional Satellite Campus Network	Launched in the 2016 academic year, the Mie University Regional Satellite Campus Network is an organization comprising four satellite campuses (Iga, Higashi-Kishu, Ise-Shima, and Hokusei [scheduled for establishment in 2018]). The aim of the Regional Satellite Campus Network scheme is to contribute to regional revitalization by applying the outcomes of education and research at Mie University. In deploying a range of activities, the scheme treats the whole of Mie Prefecture as an arena for education and research. In order to pursue specific activities in line with the characteristics of each field of activity, Mie Prefecture is divided into distinctive regions, in each of which a Regional Satellite Campus has been established using local government facilities. Functioning as hubs for tackling local issues and cultivating regional human resources, the four Regional Satellite Campuses pursue a range of practical activities aimed at revitalizing the Mie Prefecture region and fostering human resources for it.
University Library	The University Library pursues the three core functions of Research Support, Study Support, and Regional Contribution. Together with the adjacent Mie Environmental and Information Platform (MEIPL), it serves as a forum for acquisition, creation, and sharing of knowledge.
Center for Physical & Mental Health	Provides medical advice for students, faculty and staff members. At the Center, doctors and nurses deal with mental illnesses and physiological stress, as well as physical illness. To keep the university community in good health, we also provide regular medical examinations for them.
Center for International Education and Research	Aims through international education and research to nurture human resources contributing towards and to promote globalization in the community.
Center for Information Technologies and Networks	Supports research and educational activities through the use of computers, servers and other information technologies. Also provides the basis for campus network security.
Center for Student Support	Aims at helping students live more fulfilling school lives by providing support for their daily and academic lives and career pursuits.
Mie Global Environment Center for Education & Research (Mie GECER)	At the Kamihama campus, excluding the University Hospital, the Environmental Management System (EMS) which encompasses the activities of the Mie University ISO Student Committee confirmed the adoption of ISO 14001: 2004 Standard and acquired the nation's first certificate for a whole university on November, 2007. We are currently pursuing continuous improvement of the Environmental Management Systems (EMS) as well as carrying out activities to promote environmental education and research and to discharge our responsibilities to society as one of the world's most advanced environmental universities. In addition, we manage discharged water, industrial wastes, and air pollution appropriately to prevent environmental disruption for our security.
Admission Center	In accordance with the basic policies established by Mie University, the Admission Center aims to promote senior high school-university linkages based on continuity and consistency of education between the senior high school and university levels, and to contribute to fostering of community-oriented human resources through development and implementation of admission selection methods that involve multi-faceted and integrated assessment of candidates.
Office for Promotion of Museums and University Cooperation	Develops regional and research networks by promoting organized cooperation and collaboration with museums.
Office for Promoting Gender Equality	Actively advances the standing of women in the workplace, work-life balance, and support for cultivation of the next generation of employees, under the direction of the Committee for Promoting Gender Equality chaired by the President and in cooperation with the Committee's specialist sub-committee and the student committee. The Mie University Declaration for Gender Equality was adopted in July 2008. In October 2013 the university was accredited by Mie Prefecture as an "Organization Where Both Males and Females Work Dynamically," and, in November of the same year, we received a Good Practice Award from the governor of Mie Prefecture.

Affiliated Facility of Faculties

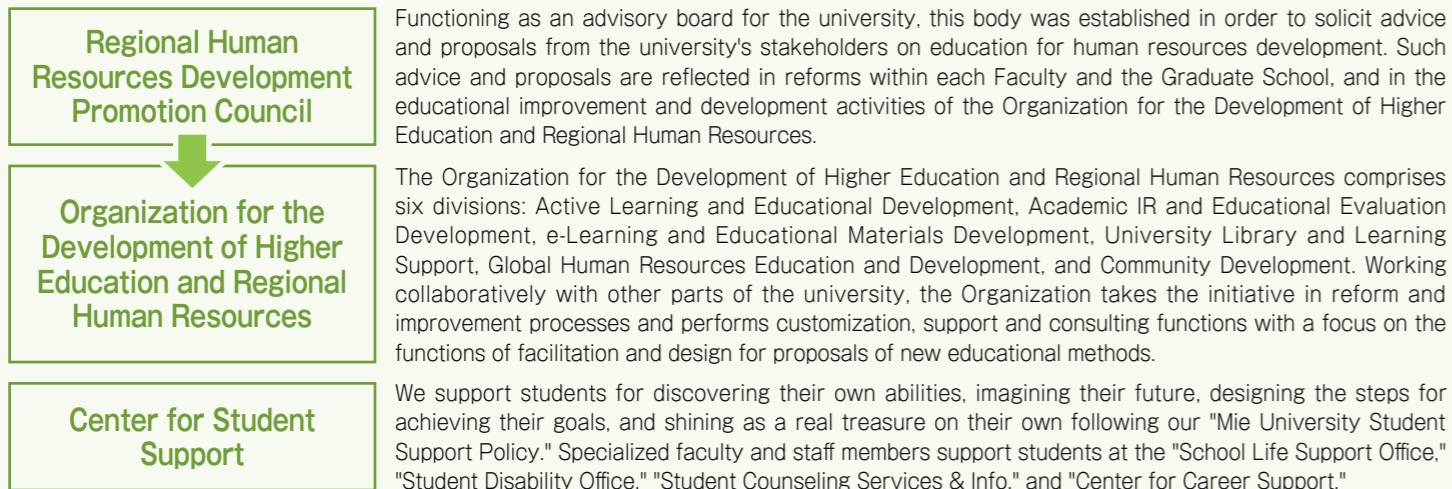
Institution	Purpose and Research
Center for Future Teachers and School Support	We give guidance based on our support system, research, and feedback results on teacher training education and current teacher development. (Pre-service Teacher Division, School Support Division, In-service Teacher and Development Division, and General Support Office)

Affiliated Facilities of Graduate Schools

Institution	Purpose and Research
Kii-Kuroshio Bio-Regional Field Science Center	Provides practical education and applied research opportunities on coexistence of human life and nature in the ecosystem that ranges from the Kii Peninsula to the Kuroshio Current.
Farm Station	Manages practical education and applied research in agricultural studies.
Forest Station	Manages practical education and applied research in forest resources and preservation.
Fishery Research Station	Involves in practical education and applied research of fishery science, marine biology and preservation of marine environment.
Graduate School of Bioresources Training Ship "SEISUI MARU"	Conducts practical/experimental survey research on fishery science/biological oceanography/ocean environment.
Graduate School of Bioresources Cetacean Research Center (CRC)	A research facility designed to advance a full range of basic and applied research on sustainable use of cetaceans as a marine bioresource.
Graduate School of Regional Innovation Studies Regional Innovation/Core-Lab	Cultivating highly-specialized professionals and sending them into society and conducting collaborative researches among government, industry, and academia.

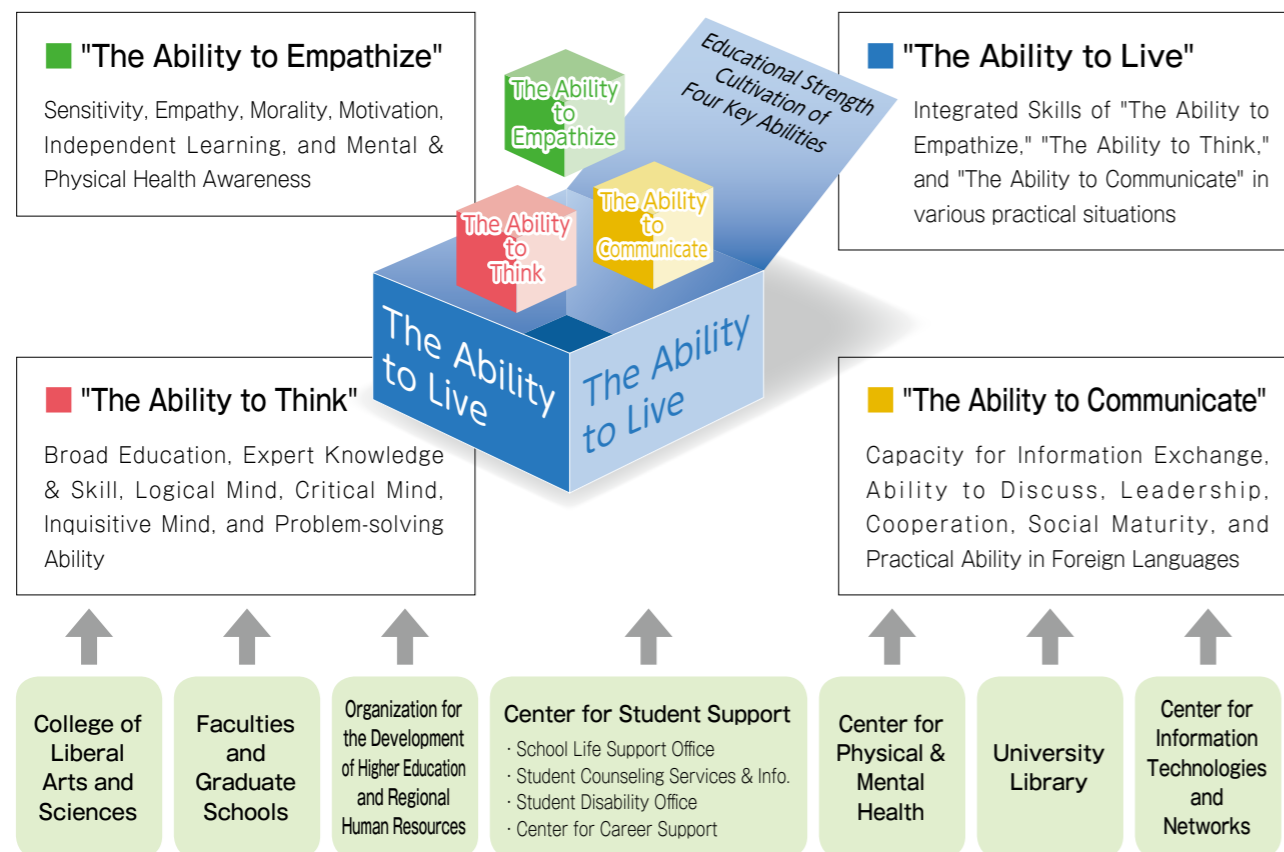
Development of Four Key Abilities Focusing upon "the Harmonious Coexistence of Nature and Mankind"

As a center of learning, we provide a world-class community-based education with opportunities for research on the harmonious coexistence of nature and mankind rooted in community. In the field of Education, we strive for the development of international and creative future educators who have "The Ability to Empathize," "The Ability to Think," and "The Ability of Communicate," with a comprehensive ability of "The Ability to Live." With the support of the Higher Education Development Center, the College of Liberal Arts and Sciences, and the five faculties and six graduate schools, are expanding their distinctive educational opportunities.



Educational Goals

We develop "Four Key Abilities," which are "The Ability to Empathize," "The Ability to Think," "The Ability to Communicate" and "The Ability to Live," for the cultivation of human beings who are capable of promoting regional innovation with advanced knowledge and technology based on broad education.



Active Learning	Start-up Seminar This is a required seminar for all newly enrolled students. This seminar helps to acquire broad generic skills with an understanding of the educational goals of Mie University's "Four Key Abilities." Students are to discuss important issues and seek solutions in groups. Then, they are to make presentations accordingly. Our Start-up Seminar has gained national attention as a highly esteemed seminar in which students learn academic and communication skills, particularly in listening and speaking, which are necessary for university study.
	Workshop on Liberal Arts This is a required course for all first-year students in the fall semester. Students read articles, discuss the content in small groups, write reviews and share and critique opinions in workshops.
Cultivation of Global Human Resources	Improvement of Communication Skills Students are to take the TOEIC IP test after entering University. According to the test results, students are to study English at appropriate levels. To acquire credits in English, students are to reach a certain score on the test. Additionally, language tests on German, French and Chinese are accepted for credits with transcripts. Furthermore, subjects offered by the college of Liberal Arts and Sciences, and subjects offered by the five Faculties are conducted in English.
	Special Program for English Students who achieved excellent results on the test can take the "Special Program for English". Students in the program are to take advanced English courses designed to offer global perspectives. In addition to taking the Start-up Seminar and Workshop on Liberal Arts, they are to take a part of Comprehensive Liberal Arts and Sciences classes in English. At the end of the Program, they are to study in the U.K.
Career Development Education	Educational Program for Career Peer Supporter Qualification We encourage students to gain the beginner and upper level qualifications of Mie University in order to obtain a wide range of work experiences. The students who have finished this program become peer supporters to assist the education of students.
Problem Based Learning (PBL) Tutorial Education	PBL, a mode of learning involving exploration of problems in small groups, is being deployed across the university and utilized in courses in both liberal arts and sciences and in specialized courses offered by individual faculties. It helps students increase communication skills and problem-solving abilities, while bettering themselves.
E-Learning	An E-Learning Education System provides tools and information on using the web to improve students' communication skills through Moodle, e-portfolio, and TOEIC online study systems. With the help of the Center for Information Technologies and Networks, the E-Learning Education System enables the promotion of active learning via e-Learning systems. Using Moodle, faculty and students can have discussions outside class and students can turn in homework assignments. E-portfolio enables students to view their own progress and to reflect on the successes and challenges of the learning process.
JABEE Accredited Education Program	JABEE (Japan Accreditation Board for Engineering Education) is a public organization for accrediting the education program to cultivate specialists to meet socially and internationally expected standards. Currently, the education program of the Faculty of Bioresources (Regional Conservation Engineering, Department of Environmental Science and Technology) is accredited by JABEE. The Faculty of Engineering (Department of Electrical and Electronic Engineering), and the Faculty of Bioresources (Department of Life Sciences) applied and were accredited in the past. Thus, we provide world-class engineering education.
Regional Contribution	Promotion of High School Education (Educational Collaboration between Universities and High Schools) Mie University contributes to advancement of the Super Science High School (SSH) and Super Global High School (SGH) Programs. We also host various ongoing networking and promotional events for educational collaboration between universities and high schools, and we operate open classes (East Kishu Lectures) and summer seminars for high school students, as well as accredited high school-university partnership classes. In addition, Mie University faculty members visit high schools to give "delivery lectures." In 2015, some 110 such lectures were attended by approximately 4,000 students in total.
	Lectures for Renewing Teaching Certificate We offer "Lectures for Renewing Teaching Certificate" accredited by the Ministry of Education, Culture, Sports, Science & Technology, which is obligated for the teachers to renew their certificates. About 3,300 people took the lectures in the 141 courses in 2016.
	Extension Courses for the General Public (Refer to page 41) The College of Liberal Arts Sciences and the Faculties provide extension course for the general public and deliver lectures at "Mie Academic Seminar (Mie lifelog learning center)" as well. In addition, among some of the regular courses at Mie University, around 50 courses are opened to the general public and about 50 people yearly join in the courses.

Fulfilling Various Unique Research Result and Sharing them with Society

In Mie University, we strive to enhance various creative applied and basic research activities, and keep our traditions to develop further international research in scientific fields and innovative research contributing towards the society.

We will never be satisfied with the research in the limited fields, our motivation is always be globalized, and our research activities are making the circle of industry, economics, society, nature, history and culture. This is the motive and the theme for our research creating our future.

We continue to have strong adhesion with community as a cross-learning complex. We also established "Research Strategic Promotion Office" in 2009 to reflect our research activities and the results to the education.

We encourage strengthening collaboration with each office and other universities for improvement of research environment and increase of sponsorship contract. Since 2011, we have set the Industrial Technology Innovation Institute and Creative Research & Development Institute including the Food Materials Search Lab, which is one of the Institutes of "Mie Regional Innovation with Food."

● Research Approaches ●



Collaboration with Local Community through Our Education and Research

Mie University contributes to the development to communities and promotes mutual cooperation with them through its education and research.

We support local intellectual services and promote cooperative activities among industries, universities, governments, and citizens.

Links with Society

It is important to develop and manage unlimited and original creation of intellectual property for science and technology which can contribute towards society by taking the advantage of education and research at the university. Mie University aggressively conducts collaborative activities with society. We support "Youth Science Festival," "Children University" at the Iga Community-based Research Center, "Ninja Study Seminar" at the Iga Cooperation Field, and "Disaster Prevention and BCP Planning Seminar for Private Sectors." We also offer practical learning education such as "Education Program for Developing Human Resources for Disaster Mitigation" and Community SMEs Problem Solving MOT (Management of Technology) Education Program, for the public.

Graduate School of Regional Innovation Studies was established in 2009 to foster human resources practically through collaborative activities and to produce core personnel for industrial circles in communities.

In April, 2011, the "Regional Area Strategy Center" was opened. The Center works on giving suggestions and recommendations on issues such as industrial development, regional improvement, tourism policy, and environmental policy for contributions to society through collaboration between municipalities. In addition, "Disaster Mitigation Research Center" was opened in April, 2014, to promote research, education and social cooperation on disaster prevention and mitigation as well as to contribute towards disaster medical care in the region around Mie Prefecture.

Bilateral Cooperation with Municipalities

As part of its regional revitalization strategies in Mie Prefecture, Mie University is working to establish collaborative agreements and implement projects with all municipalities (29 cities and towns) in the prefecture. In the 2016 academic year, we attained the goal of having agreements in place with all 29 municipalities. Going forward, we will work with not only the Mie Prefectural Government but also all of the municipalities that we have already concluded agreements with in order to respond appropriately, under each agreement, to various challenges in the pursuit of regional revitalization. We will take a university-wide approach to responsible implementation through augmented partnership and collaboration on projects that contribute to education and research at Mie University and to local development initiatives in the prefecture's municipalities.

Research for Contribution toward Communities

Mie University promotes research on issues relevant to Mie Prefecture, Ise Bay, and Kii Peninsula, and holds symposiums and forums for locals.

We also work on activities based on education and research handled by our faculty and staff members for the purpose of creation and promotion of regional creation and promotion activities by Mie University.



Setting Up a Small Wind Power Generator
"Practical Study on Environmental Issues Focusing on Wind Power Generation for Elementary School and Junior High School Students"
Takao Maeda, Professor Graduate School of Engineering



Presentation session for Jr. Robocon 2016 in Mie
"Development of an industry-academia-government collaborative program to foster the development of future science and technology innovators in Mie Prefecture"
Akio Uozumi, Professor Faculty of Education of Engineering

Collaborative Research

In addition to collaborative and contract research projects with the private sector and other partners, we pursue a broad range of collaborations utilizing the university's particular strengths. These activities include interdisciplinary research across different faculties and graduate schools, research with other universities in Japan, and international collaborative research. In particular, we actively engage in collaborative research with local government bodies and companies. We have one of the best track records nationwide in collaborative research with local small and medium-sized enterprises, and we make significant contributions to regional development. The Community-University Research Cooperation Center and Mie TLO Co. Ltd., work with the university's various divisions to advance collaboration by matching the needs of private companies, etc., with research seeds at our university.

Intellectual Property Creations

The Management Office for Intellectual Property was established to develop and manage the university's intellectual properties. The office provides educational activities on intellectual property and develops individuals who can handle intellectual property matters. The office also creates intellectual properties and performs activities related to patents. Mie TLO Co. Ltd., transfers patented intellectual properties to private companies.

Publication of Mie University Research Seeds

Mie University aims to use its intellectual properties to promote cooperative research with local industries. To realize this goal, the Research Seeds of about 700 faculty members are available both in the Website and CD-ROM. (<http://www.crc.mie-u.ac.jp/seeds/>)

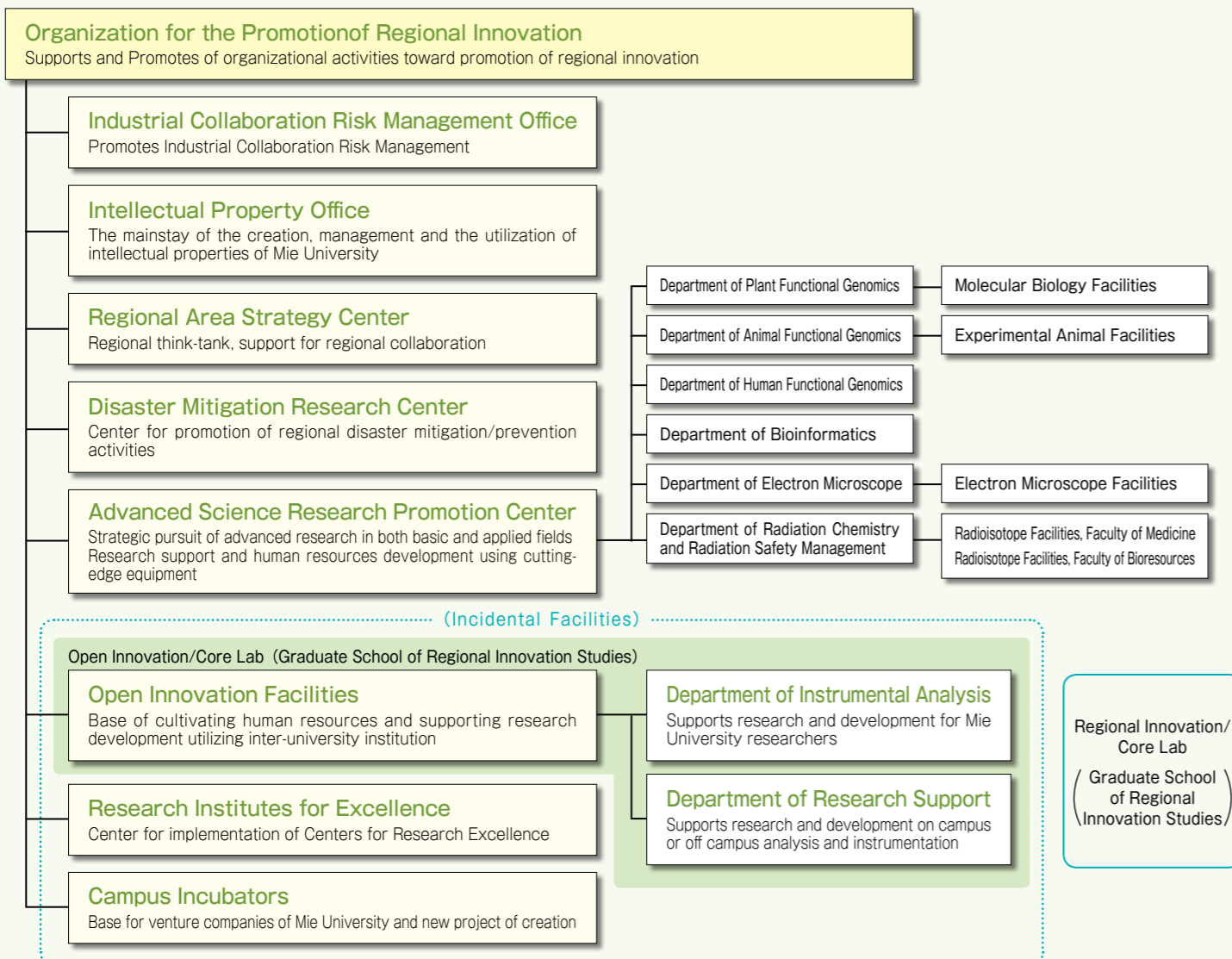
Implementation Structure

Organization for the Promotion of Regional Innovation

The Organization for the Promotion of Regional Innovation (OPRI) was formed on November 1, 2016 through amalgamation of the Life Science Research Center and the Community-University Research Cooperation Center.

The Organization has the following arms: the Industrial Collaboration Risk Management Office, involved in the management of risks arising in the course of promoting industry-academia-government collaborations; the Intellectual Property Office, which pursues the creation, management and utilization of intellectual properties originating from Mie University; the Regional Area Strategy Center, a regional think-tank that solves problems and works for advancement of the region; the Disaster Mitigation Research Center, which supports and promotes disaster mitigation and prevention activities in the region; the Advanced Science Research Promotion Center, which supports and promotes advanced scientific research as the basis for innovation; the Open Innovation Facilities, which support research and development and cultivate human resources within and beyond the university employing joint-use equipment; the Research Institutes for Excellence, where Centers of Research Excellence recognized by the university implement research; and the Campus Incubators, which generate university-originated venture businesses and new projects.

Based on this structure, the Organization provides technical consultation to and responds to various requests from the local community concerning research and development, furthering exchange among researchers both on and off campus, and advancing regional innovation activities that are unique to Mie University.

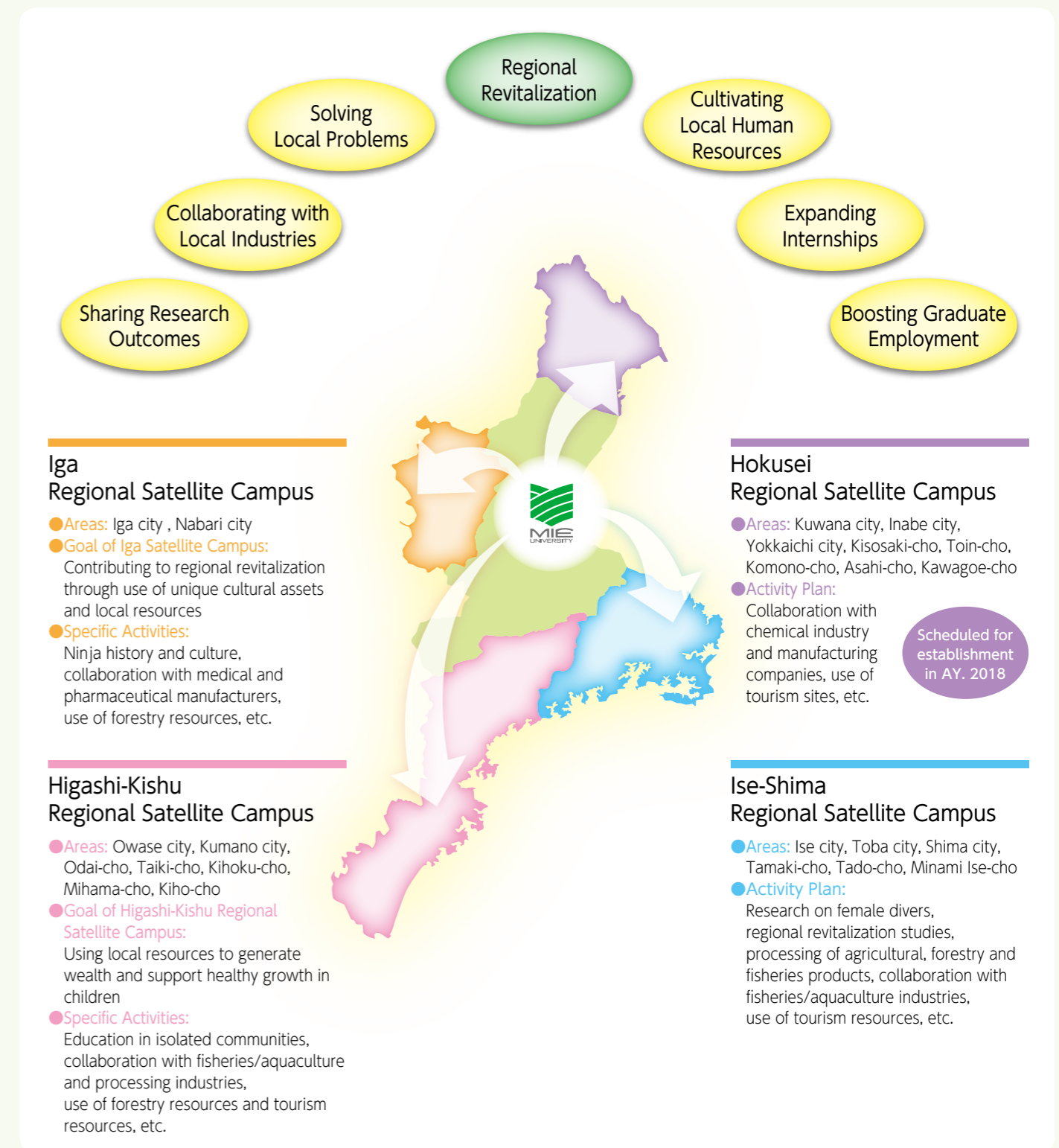


Regional Satellite Campus Network

Launched in the 2016 academic year, the Mie University Regional Satellite Campus Network is an organization comprising four satellite campuses (Iga, Higashi-Kishu, Ise-Shima, and Hokusei [scheduled for establishment in 2018]).

The aim of the Regional Satellite Campus Network scheme is to contribute to regional revitalization by applying the outcomes of education and research at Mie University. In deploying a range of activities, the scheme treats the whole of Mie Prefecture as an arena for education and research. In order to pursue specific activities in line with the characteristics of each field of activity, Mie Prefecture is divided into distinctive regions, in each of which a Regional Satellite Campus has been established using local government facilities.

Functioning as hubs for tackling local issues and cultivating regional human resources, the four Regional Satellite Campuses pursue a range of practical activities aimed at revitalizing the Mie Prefecture region and fostering human resources for it.



= From MIE to the World = To form global human resources rooted in the community

Tri-U International Joint Seminar & Symposium

This is an academic seminar for students to enhance their international experiences, which is held every year at one of the three founder universities (Mie University, Chiang Mai University in Thailand, and Jiangsu University in China) in turn since 1994. Bogor Agricultural University, Indonesia, was newly added as one of the host universities from 2011. At the conference, students from invited universities present their research papers in English on the themes of "Population, Food, Energy and Environment." In 2017, the 24th Seminar & Symposium will be held at Mie University.



Consecutive Degree Program

Fostering global human resources with advanced Japanese language proficiency and a cosmopolitan mindset.

Mie University operates a Consecutive Degree Program in partnership with Tianjin Normal University, China.

Twenty students (from the former Double Degree Program) are selected from the Department of Japanese Language at Tianjin Normal University to come to Japan and take the graduate school entrance examinations (operated separately by each graduate school) by March. Those accepted begin their graduate studies in October of the same year.

Mission

- ① Attain a high level of Japanese language proficiency
- ② Acquire specialized knowledge
- ③ Contribute to internationalization of the campus

Double Degree Program

Mie University has established agreements with overseas partner universities on implementation of double degree programs, whereby students can be enrolled in two institutions and earn a degree from each. We operate these programs at graduate school level with Sriwijaya University and Padjadjaran University in Indonesia.

Mission

- ① Earn a degree from each of the two universities
- ② Develop an international outlook through cross-cultural experience
- ③ Improve practical language proficiency through living abroad
- ④ Help accelerate campus internationalization

International Career Development Program

For the development and nurturing of international personnel, we offer programs as follows:

- ▶ **Foreign Language Program** : The university operates foreign language programs in English-speaking countries including the United States, Australia, and Canada. Programs held in the last year include an English Language program at North Carolina state University, USA and Short-term English Training at the University of British Columbia, English Language Institute, Canada (UBC).
- ▶ **Weekend TOEFL Course** : In collaboration with Nagoya University and other universities, we offer courses designed to improve the TOEFL and IELTS scores of students who are planning to participate in exchange programs.
- ▶ **Survival Japanese Course** : We operate a Japanese language program for international students to help make their time in Japan easier and more rewarding.
- ▶ **Field Study Programs** : Cross-cultural experience and international understanding is enhanced through visits to overseas partner institutions to interact with local students.
- ▶ **Various Exchange Programs** : Through study abroad workshops, exchange meetings with international students, and special events, students are provided with opportunities to improve their communicative proficiency and capacity for cross-cultural understanding.



Inviting Foreign Faculty

At Mie University, we support foreign researchers mostly through grant-in-aids such as JSPS Postdoctoral Fellowship for Overseas Researchers supported by Japan Society for the Promotion of Science and from our partnership institutions. In 2016, we received 34 foreign researchers at Mie University. In addition, we started inviting foreign faculty for our unique short term program in 2014.

International Contribution through Education and Research Activities

Based on Mie University's philosophy, "Mie to the World," Mie University aggressively deals with international contribution projects for the advancement of developing countries mainly in Asia and Africa. One hundred and thirty-two Mie University faculty members have been sent to developing countries as JICA experts and mission members of JICA, Japan International Cooperation Agency (JICA). Furthermore, we receive international students from Afghanistan and support development in the isolated island of Fiji through international cooperation projects such as JICA.



Support of Internationalization in the Region

We conduct multi-culture exchange programs such as multi-cultural exchange classes, Japanese education support for foreigners, homestay programs for international students, and others through sending faculty members and international students to educational institutions to support the internationalization and international exchange of Mie Prefecture, where the population ratio of foreign nationals is the 5th highest in Japan.

International Exchange Days

We operate a number of events for international exchange between international and Japanese students, with the aim of furthering the internationalization of Mie University. A wide variety of events have been held to date, including calligraphy experiences for international students, global cooking parties, foreign film screenings, and international student traditional performing arts and culture exchange sessions. Exchange events with international students have featured a variety of performances including Tsugaru shamisen recitals and international students performing such items as Indonesian instrumental and dance pieces, Thai dance, Afghan dance, classical Chinese opera, and demonstrations by the Mie University Cheer Leading Party.

Exchange Activities through International Alumni

Graduates of Mie University and international students who studied at Mie University found alumni association in different places in the world. Each association has its own activities such as annual reunion, frequent contact with each other to exchange and share information.



Japanese Language and Culture Education for International Students

At the Center for International Education and Research in Mie University, we provide Japanese language and culture education classes for all international students. There are five different levels ranging from beginner through advanced according to the student's needs and abilities. An intensive Japanese course is also offered for beginners and intermediate students during a six-month period. Also, some of the courses in Japanese language for beginning and intermediate levels have been offered for the general public since 2009.

Scholarship Programs

For students with outstanding academic results, we offer scholarships to study abroad, to participate in international programs including short programs with partner universities, and to participate in the Double Degree Programs. In addition, we support international students living in Japan to study by waving entrance fees and tuition for excellent international students from our partnership universities. Furthermore, we provide information about scholarships from Ministry of Education, Japan Student Support Organization and private foundations.

International Student Support

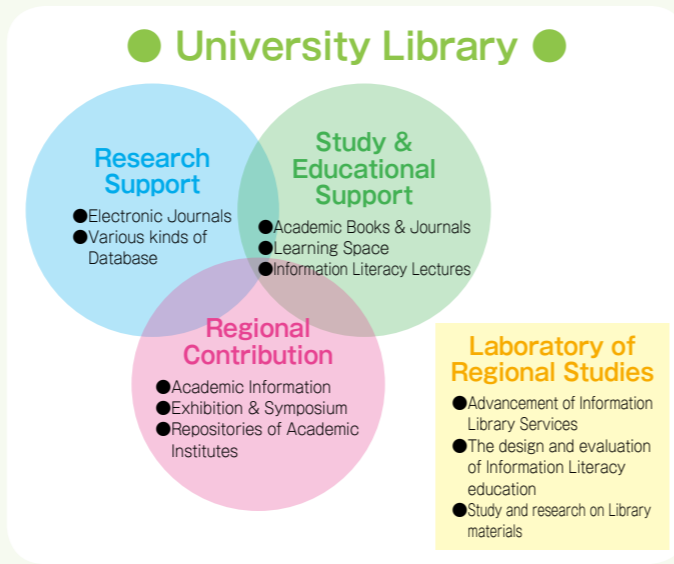
We offer support for the implementation of international exchange activities, the daily life of international students in Japan, participation in regional activities, and Japanese language education, through collaboration with the Center for International Education and Student Support Center. Furthermore, we support international students in finding careers after graduation by introducing them to the private sectors in the region and Field trips twice a year.

Center for International Education and Research (CIER)

The Center for International Education and Research (CIER), was inaugurated on October 1, 2005, as a special facility for research and education. The Center mainly conducts international education and Japanese language education programs for international students.

Hub Institution of Advanced Academic Information Required for Research, Education and Learning

The University Library was renovated on March 2013. Tri-functions of "Research Support," "Study & Educational Support," and "Regional Contribution" are the service objectives. Mie University collects and offers a wide range of academic information needed for research, education, and study. The Laboratory of Regional Studies is also set and works on the advancement of Library services.



The Exterior of the Library



1st Floor "Commons Area"

Mie University Library

Electronic Journals & Database

About 15,000 electronic journal titles by major publishers and aggregators such as Elsevier and Springer are accessible 24 hours a day from computers connected to the internal LAN. We also introduce reference cited database and research information database such as "Web of Science" and "SciFinder Scholar" and encourage research infrastructure improvements.

Educational Environment & Support for Information Literacy Education

We provide an environment conducive to learning, by offering books and journals, quiet study spaces where students can concentrate, locations where students can engage in group studies, and more than 60 computers with Internet connection. The learning environment caters for a wide range of uses. Furthermore, we combine with classes and hold lectures for OPAC on how to research information through various databases, how to write reports, and how to give presentations.

Regional Contribution

Mie University Library allows general public access to academic documents of Mie University, and provides academic information to related organizations such as libraries in Mie prefecture. Deliverables from research and studies of Mie University are saved and stored, to provide Institute Repository and the digital archives on the cultural and historical heritage.

Laboratory of Regional Studies

Laboratory of Regional Studies focuses on the research and development of providing conservation for record materials and advancement of information library. We offer information of the achievement from our research collaborated with libraries and museums in the region as an intellectual center.

Mie Environmental & Informational Platform (MEIPL)

"MEIPL" opened in April, 2012

MEIPL is one of the academic commons* connected with the University Library to offer common space for students to create new ideas. In addition, we aim to establish Mie University as the most environmentally advanced university in the world as well as most contribution to society. We opened the MEIPL to offer information about our environmental education and research. On the first floor, there is an exhibition hall that offers information on environmental education and research results and a space community exchange. There is an open "Learning Commons" places on the second floor and the third floor functions as "open school" style classrooms (PBL seminar rooms) with no wall on the hallway side.



Mie Environmental & Informational Platform (MEIPL)

*Academic commons are places to share their knowledge by exchanging various information collaborating with each other.

2nd Floor, Open Space for Students to Use Freely

On the second floor, there are facilities (such as mobile chairs, tables, whiteboards, and bookshelves) for the students to share information as well as to encourage freewheeling thinking and creativity. At the PC station, students can access the necessary resources and analyze and organize the information. In addition, there are "PBL Seminar Rooms" and "Social Spaces" for students to relax and talk with their friends.



2nd Floor "Learning Commons"

3rd Floor, New-style Classes for Lectures and Seminars

Open-space classrooms without walls on one side provide a motivating atmosphere while also maintaining privacy during classes. Using mobile chairs and tables, class can be held in a variety of styles. Completely enclosed classrooms offer a smaller area for problem-based learning classes using new technology. In addition, there is a space for "Teaching Commons."



3rd Floor, PBL Seminar Room

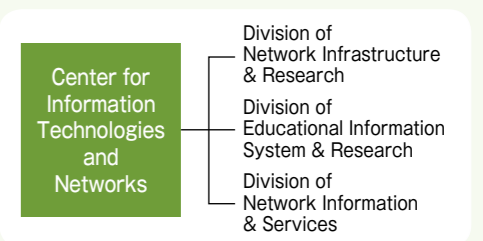
Information Infrastructure

Hub Institution to Maintain and Strengthen Academic Information Infrastructure

We strive for the improvement and reinforcement of Academic Information Infrastructure which Mie University plays a role as a Center of Electronic Information.

Center for Information Technologies and Networks

Center for Information Technologies and Networks is composed of three divisions; Division of Network Infrastructure & Research, Division of Educational Information System & Research, Division of Network Information & Services. It manages and develops the information systems of Mie University.



Network Infrastructure

Network Infrastructure division provides high-speed network system which is essential to smooth educational activities and office works.

Information Services

Information Services division consolidates the management of accounts for faculty, staff, and students as "Unified-account," which is used for electric programs inside Mie University. In addition, it holds several useful license agreements for software such as "Microsoft Office Personal Plus," and they are available for faculty, staff and students of Mie University.



Educational Support

Educational Support division opened several computer rooms for lectures and self-study. It also operates workshops on such topics as IT-related certification exams, how to use various types of software, and security measures.

Faculty and students can confirm news about lectures by cell phone, home PC, and the intramural bulletin board system.



Information Education

For incoming students of all faculties, Information Education division provides lectures, "Information Literacy" to learn how to use information system of Mie University and "Information Logics" to learn IT-related ethics and manners.

Aiming to Establish A World-class Environmentally Advanced University

Mie University aims to establish itself as the most environmentally advanced university in the world implementing Mie University original environmental education, environmental research activities, social contribution responding to regional needs, and efficient management system. We are reducing CO₂ emissions by 30% below the 1990 level by 2020, expanding our aim to make our campus more environmentally advanced by establishing a circulating system of recycling: 3R activity, and collaborating with industry, government, university and citizens for co-existence of nature and mankind.

Global Environment Center for Education & Research (Mie GECER)

Mie GECER promotes further education, research, social contribution, and efficient management system based on Mie University Environmental Policy.

Certification for Environmental International Standards ISO14001 (Environmental Management System Establishment/Management)

Mie University is the first university in Japan to be granted the certificate for environmental international standards ISO14001 in November 2007 and establishes an Environmental Management System (EMS) and manage. Currently, we are operating under the 2015 standards.

In addition, we aggressively conduct environmental activities to minimize the impact on the environment while cultivating environmental human resources as University Social Responsibility (UAR).

3R Activities (Reduce/Reuse/Recycle) Activities led by the Environmental ISO Student Committee

(1) Reduce: Reducing Plastic Shopping Bags in Coop

From January 2008, Coop has started to charge for plastic bags at the cashier. In addition, the very first convenience store giving no plastic bags in Japan was opened on the Mie University Campus in October, 2009.

(2) Reuse: Reusing Illegally Parked Bicycle

We have been repairing bicycles left on campus since 2007 and giving them out to incoming students. In addition, we started collecting used electric appliances in 2009. Those used bicycles and electric appliances were given out to international students and incoming students.

(3) Recycle: Recycle Used Papers

Since 2007, we have collected used papers and recycled them into Mie University's original toilet paper rolls. About 20% to 30% of them are provided for use inside Mie University.

Clean Activity on Machiya Sandy Beach and Biodiversity Preservation Activity Cooperating with Industry, Government, University and Citizens

Collaborating with Mie University faculty, staff members, ISO Student Committee members, citizens: Machiya-hyakunin-syu, private sectors: Toyota, Chubu Electric Power Co., government, elementary schools and junior high schools in Tsu, we work on cleaning activities five times a year on Machiya Sandy Beach neighboring Mie University campus. In addition, we provide environmental education and implement biodiversity preservation activities by holding seaside tours to call attention to plants such as ixeris repens, which is designated as one of the pre-endangered spices in Mie Prefecture.



Cleaning Activity at Machiya Beach

Matsunase Tidal Flat

MIEU Point

As part of our efforts on environmental activities, students and faculty can register Eco-points using Mie University Moodle or their own mobile systems. To keep these environmental activities sustainable, those who achieved outstanding results may get a commendation from the President. In addition, those points may be used for to enjoy shopping on campus.

This MIEU Points System is used both to foster self-directed behaviors and to promote sustainable environmental activities.



Smart Campus Project

Mie University is building and operating a Smart Campus through energy creation, energy storage, and energy saving.

(1) Campus Energy Management

Through optimizing operation of Smart Campus facilities through EMS, we are achieving major CO₂ reductions.

(2) Disaster Prevention Facility

When disasters occur, we supply stable power by utilizing recyclable energy, even if the energy infrastructure such as electricity and gas is cut off.

(3) Efficient Utilization of the Results

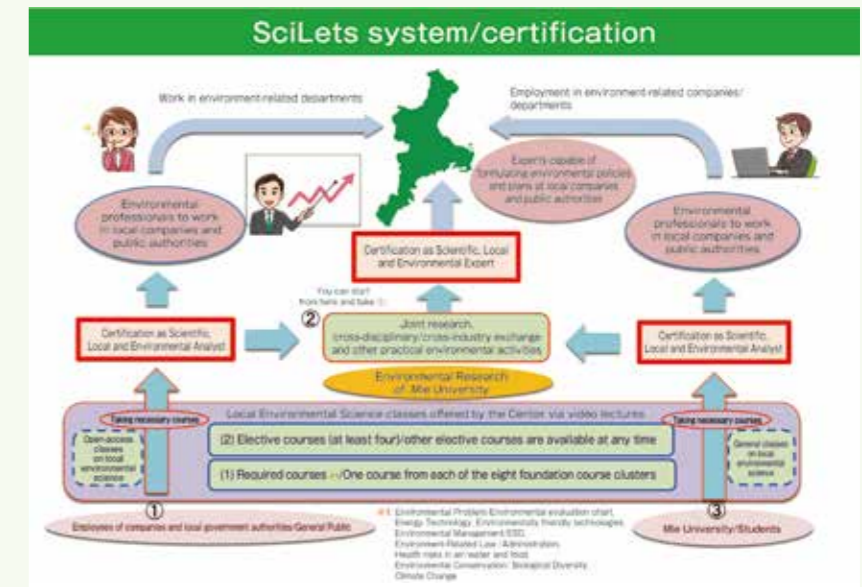
We made a guideline from our results, which is applicable for other universities and operation facilities.

Scientific, Local and Environmental "Talented Staff" Development Program (SciLets)

The Scientific, Local and Environmental "Talented Staff" Development Program (SciLets) awards the title Scientific, Local and Environmental Analyst to students who complete courses in Local Environmental Science Overview, a course portfolio that offers comprehensive coverage of environment-related topics across eight basic fields, together with four elective courses. For the convenience of busy working adults, the program has adopted a system of e-Learning (mainly using video lectures and information and communication technology) which allows classes to be taken remotely without the need to physically attend the university campus.

The higher-level Scientific, Local and Environmental Expert certification involves a system of hands-on environmental activities through On the Job Training (education conducted systematically in the course of work duties). For this purpose, the program also functions as a hub for joint research and cross-industry/cross-field exchange in relation to the environment and technology.

These learning and teaching systems are operated through Mie University's own social network (known as SciLets in the context of this program), which enables "talented staff" to stay connected and continue their activities and studies of new knowledge even after having acquired their qualifications.



Granted Awards on Environment

Our achievements in pursuit of a low-carbon campus led to the university receiving the Environment Minister's Award for Global Warming Prevention Activity in the 2016 academic year. Mie University's efforts to extend green purchasing through initiatives such as the MIEU Point's System were recognized when the university received the Grand Prize and the Minister of the Environment Prize in the Green Purchasing Network's 17th Green Purchasing Awards in 2015. This was the first time that a university had received the Minister of the Environment Prize, the highest honor for best practice in green purchasing. Other awards received by the university for its environmental initiatives include the Prize of Containers and Packaging 3R Promotion awarded by the Minister of the Environment in January, 2009 (Ministry of the Environment), the Grand Prize for Global Environment Award in April 2013 (Fujisankei Communications Group), the METI Minister's Prize in the Grand Prize for Excellence in Energy Efficiency and Conservation program in the Successful Case of Energy Conservation Category (Energy Conservation Center) in 2014, Five-Star Eco University Award in Eco University Ranking in March, 2015 (Eco League) and the Environmental Communication Awards 2016 (Global Environmental Forum, Ministry of the Environment) for the eighth time, in February 2017. In addition, in June 2017, the Environment ISO Student Committee received the Regional Environmental Conservation Achievement Award for contributors by the Minister of the Environment as having carried out public awareness activities and other public activities on environmental conservation for many years.



Award Ceremony for "the Regional Environmental Conservation Achievement Award" June 14, 2017



Diploma



Environmental Management Report 2016

For Providing Advanced Medicine and Cultivating Human Resources

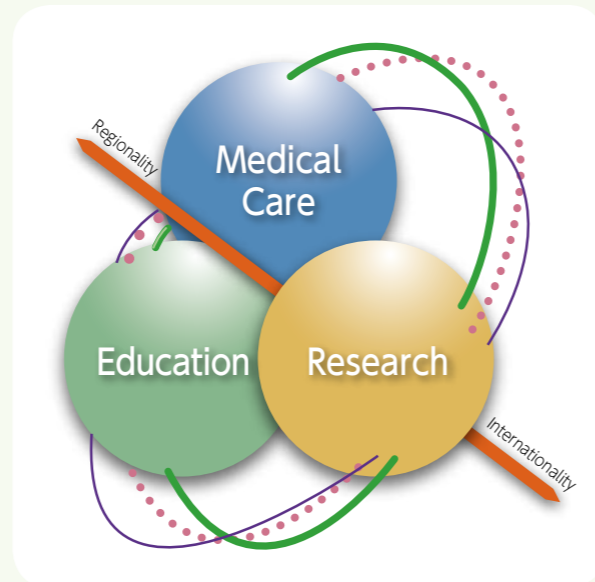
Mission and Principles of Mie University Hospital

As a regional medicine hub offering reliability and reassurance, we pursue future-oriented medical care and research, and produce medical professionals with outstanding skills and a deep sense of humanity.

《Basic policy》

- We develop hospital environments that deliver spiritual calm and healing.
- We function as a regional hub hospital that contributes to the prevention of illness and safely delivers sophisticated, cutting-edge medical care.
- We pursue innovative clinical research and contribute to the international community through the study and practice of medicine.
- We train the next generation of medical professionals in close collaboration with local medical and educational institutions and governmental organizations.

The hospital will develop and maintain excellent staff members and provide challenging job opportunities.



Providing High Quality Medical Care

To provide high quality medical care, standardized safe and secure diagnosis and treatment must be ensured. An integrative checking system by the Department for Patient Safety is established for medical treatment and care given at the hospital. The Committee on Quality and Ethics in Medicine, including outside members, assesses the validity of the hospital's medical services.

Training Skilled Medical Specialists

The hospital will establish the medical specialist education curriculum, aiming to offer more improved medical services.

Developing New Medical Technologies

The hospital will enhance the quality of facilities such as the Research and Development Center for Clinical Medicine and train specialists in advanced medicine and clinical trial fields. The hospital will establish a facility to research disease rates and assess appropriate numbers of doctors in Mie Prefecture.

Contributing to Community Health

The hospital plays the central role in cooperating with affiliated hospitals in Mie Prefecture. It assists and cooperates the hospitals in remote local areas by sending the medical training staff for improvement of medical services.

New University Hospital Wards opened.

The present Mie University Hospital has existed for a long time and is getting old. The second stage of the construction for the new wards and the outpatient wings was completed in May 2015. The third stage of demolition and exterior construction are progressing.

New Outpatient Clinics and Hospital Ward ▶



Floor Information for Hospital Wards & Outpatient Clinics

12F	• Ocean View Restaurant "Shiki-oriori" • San-i-kai Hall
11F	• Hematology • Oncology • Ophthalmology • Dermatology • Gastrointestinal System (Gastroenterology and Hepatology, Gastroenterological Surgery, Hepato Pancreato Biliary Surgery)
10F	• Cardiology • Cardiovascular Surgery • General Medicine • Diabetes and Endocrinology • Nephrology • Pulmonary • Thoracic Surgery
9F	• Gastroenterology and Hepatology • Gastroenterological Surgery • Hepato Pancreato Biliary Surgery
8F	• Orthopedic Surgery • Neurosurgery • Neurology • Diagnostic Radiology • Radiation Therapy • Interventional Radiology • Plastic Surgery
7F	• Gynecology • Breast Surgery • Maternity and Perinatal Care Center
6F	• Nephro-Urologic Surgery • Dentistry and Oral Surgery • Pediatrics • Pediatric Surgery • Pediatric Cardiosurgery • Cell Transplantation Therapy Center
5F	• Otorhinolaryngology, Head and Neck Surgery • Gastrointestinal System (Gastroenterology and Hepatology, Gastroenterological Surgery, Hepato Pancreato Biliary Surgery) • Psychiatry • RI Ward/Small Sealed Treatment
3F	• Central Laboratory (Emergency Laboratory) • Division of Blood Transfusion • Pathology Division • Central Supply Division • Division of Clinical Anesthesia • Central Operating Division (Operation Theater) • Clinical Engineering
2F	• Hemodialysis Unit (Analysis Center) • Division of Endoscopic Diagnostics and Therapeutics (Endoscope Laboratory) • Central Radiology Division (CT/MRI/Angiography) • Intensive Care Center
1F	• Central Radiology Division (RI Laboratory) • Emergency and Critical Care Center (Emergency Outpatient Unit) • Overtime Counter/Disaster Control Center • Department of Nutrition (Kitchen) • Division of Pharmacy • Medical Supplies Store • Medical Supplies Counter • Barber/Hair Salon • Relaxation and Resting Area
5F	• Clinical Training and Career Support Center • Hospital Classroom • Great Hall • Cancer Center • Hospital Library (Please use elevator from the 6th floor in the Building of the Outpatient Clinics)
4F	• Psychiatry • Dermatology • Dentistry and Oral Surgery • Hepatitis Support Center • Oral Care Center • Electroencephalography Room • Demonstration and Development • Floor counter
3F	• General Medicine • General medicine • Cardiology • Hematology • Gastroenterology and Hepatology • Pulmonary • Oncology • Nephrology • Diabetes and Endocrinology • Nephro-Urologic Surgery • Palliative Care • Infectious diseases • Chemo Therapy Clinic • Vascular and Heart Center • Blood Specimen Collection • Physiological Laboratory • Genetic Counseling Room • Reception/Accounting counter
2F	• Neurology • General Surgery • Gastroenterological Surgery • Hepatobiliary Pancreatic and Transplan Surgery • Cardiovascular Surgery • Thoracic Surgery • Pediatric Surgery • Orthopedic Surgery • Maternity and Perinatal Care Center • Pediatrics • Ophthalmology • Otorhinolaryngology-Head and Neck Surgery • Neurosurgery • Plastic Surgery • Diagnostic radiology • IVR • Anesthesiology and Pain Clinic • Breast Center • Advanced Reproductive Medical Center • Central Radiology Division (X-ray Fluoroscopy CT and MRI) • Reception/Accounting counter
1F	• Radiation Therapy • Rehabilitation Division • General Information • Reception/Payment counter • Payment counter/Automatic cashier machines • Medical Welfare Support Center (Patient Consultation Service) • Clinical Research Support Center • Admission & Discharge Support Center • Organ Transplantation Center • Pediatric Total Care Center • Nutritional Treatment Department • Cancer Patient Support Center • Nutritional Guidance Room • Infection Consulting Room • Nursing Room • Outside Prescription Assistance • Ribbons House • Convenience Store • Coffee Shop • ATM

“Clinical Training and Career Support Center” for the Productive Education after Graduation

Three elevators available for staff members separated by cleanliness

Specialized and special outpatient clinics are placed effectively in bright and spacious waiting space.

Wide Main Street

Three Elevators for Patients and Visitation

D A Hospital Offering an Excellent Work Environment
At this hospital, everyone can enjoy working cooperatively with each other. We provide advanced amenities such as a security system for protection, conference rooms on each floor, and rooms with a shower booth for staff on duty.

Heliport for Doctor Helicopter and Helicopters for Disaster on the Roof

Female Wards and Children Wards Available

Restaurant with Excellent Ocean View

Cafeterias on each floor are located on the ocean side.

Triangular-shaped Hospital Ward with Transfer Efficiency

Hospital Wards are divided by Organs not by Department

“Intensive Care Center” with ICU and HCU

A Hospital for Patients
This hospital provides heartwarming services as well as secure and safe treatment in an excellent environment. Most of the rooms are set for four people and about 30% of the rooms are individual rooms. We provide protection of privacy and also an environment to use IT devices safely.

“Medical Welfare Support Center” for the Consulting with Patients and the Families

“Disaster Control Center” for Keeping the Security in the Hospital

B A Hospital to Provide Cutting-edge Medical Treatment
We provide cutting-edge medical treatment to our patients as the only advanced treatment hospital in Mie Prefecture. We offer advanced treatment for cancer, transplantation therapy, and endovascular treatment.

C A Hospital for Nurturing Personnel for the New Generation
We provide education for nurturing reliable and quality doctors in the community. We also provide education for nurses, pharmacists, laboratory technicians, and medical processors.

E A Hospital with Advantages of Location
Among national university hospitals, only Mie University Hospital is located along the coastline. Ise bay lies to the east and the Suzuka mountains lie to the west. In this comfortable atmosphere, patients can enjoy the beautiful ocean view while receiving treatment.

Number of Staff Members

As of May 1, 2017

Divisions	Classification			Teaching Staff				Total	Teachers at Affiliated Schools	Other Staff	Total	Grand Total
	President	Trustees	Auditors	Professors	Associate Professors	Associate Professors (Lecturers)	Assistant Professors					
President, Trustees, Auditors	1(0)	5(0)	2(0)					8(0)			0(0)	8(0)
Administration Bureau				1(1)				1(1)		186(64)	186(64)	187(65)
College of Liberal Arts and Sciences				10(2)	4(2)	3(0)		17(4)			0(0)	17(4)
Organization for the Development of Higher Education and Regional Human Resources				1(1)	2(1)	3(2)	2(1)	8(5)			0(0)	8(5)
Organization for the Promotion of Regional Innovation				2(0)	5(0)		8(1)	15(1)		6(2)	6(2)	21(3)
Center for International Education and Research					2(2)			2(2)			0(0)	2(2)
Center for Information Technologies and Networks					1(0)		3(0)	4(0)		3(1)	3(1)	7(1)
Center for Student Support						2(0)		2(0)			0(0)	2(0)
Global Environment Center for Education & Research							1(0)	1(0)			0(0)	1(0)
Admission Center					1(0)			1(0)			0(0)	1(0)
Center for Physical & Mental Health				2(0)	1(0)			3(0)		2(2)	2(2)	5(2)
Faculty of Humanities, Law and Economics				35(12)	28(7)	2(1)	2(2)	67(22)		9(3)	9(3)	76(25)
Graduate School of Education				3(0)	3(1)			6(1)			0(0)	6(1)
Faculty of Education				48(7)	22(6)	5(2)		75(15)		7(4)	7(4)	82(19)
Kindergarten								0(0)	7(6)		7(6)	7(6)
Primary School								0(0)	26(10)	7(3)	33(13)	33(13)
Junior High School								0(0)	27(7)		27(7)	27(7)
Mentally Challenged Children's School								0(0)	29(13)	1(1)	30(14)	30(14)
Graduate School of Medicine				47(8)	33(11)	17(0)	52(18)	149(37)		8(4)	8(4)	157(41)
Faculty of Medicine				1(1)		1(1)	11(3)	13(5)			0(0)	13(5)
University Hospital				6(1)	13(0)	50(2)	110(24)	179(27)		744(578)	744(578)	923(605)
Graduate School of Engineering				43(0)	43(0)	2(0)	18(2)	106(2)		32(10)	32(10)	138(12)
Graduate School of Bioresources				43(2)	39(4)	2(1)	12(1)	96(8)		12(6)	12(6)	108(14)
Kii-Kuroshio Bio-Regional Field Science Center								0(0)		19(5)	19(5)	19(5)
Farm Station				1(0)	1(0)			2(0)			0(0)	2(0)
Forest Station					1(0)		1(0)	2(0)			0(0)	2(0)
Fishery Research Station				1(0)				1(0)			0(0)	1(0)
Training Ship "SEISUI MARU"					1(0)		1(0)	2(0)		14(2)	14(2)	16(2)
Cetacean Research Center (CRC)				4(0)	2(0)		1(1)	7(1)			0(0)	7(1)
Graduate School of Regional Innovation Studies				5(0)	1(0)		2(1)	8(1)			0(0)	8(1)
Grand Total	1(0)	5(0)	2(0)	253(35)	203(34)	87(9)	224(54)	775(132)	89(36)	1,050(685)	1,139(721)	1,914(853)

*One of the auditors works part-time.
 *Fixed-term staff such as substitute staff are included and staff on administrative leave or maternity leave are excluded.
 *The numbers in parentheses represent the numbers of female.
 *Numbers of teachers at Attached Schools includes the number of special appointed faculty.

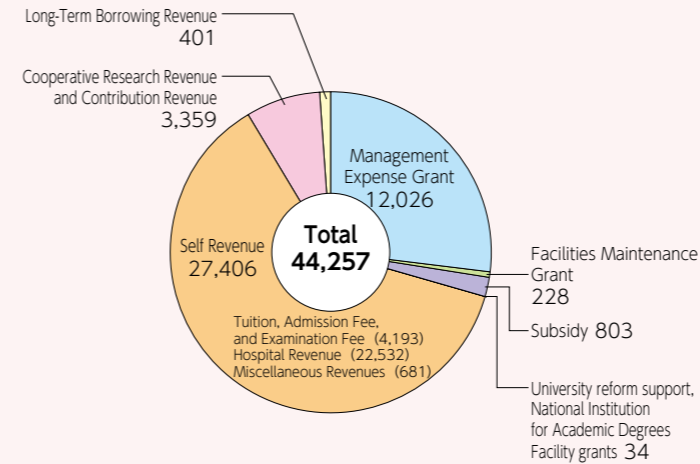
Endowed Departments and Industry-Academic-Government Cooperation Departments (Graduate School of Medicine) As of May 1, 2017

Divisions	Classification	Teaching Staff (Full-time)				Sub-total	Teaching Staff (Part-time)	Total
		Professors	Associate Professors	Associate Professors (Lecturers)	Assistant Professors			
Dementia Prevention and Therapeutics	Endowed Department				1(0)		1(0)	
Innovative Surgery and Surgical Techniques Department	Endowed Department			1(1)			1(1)	
Orthopedics and Sports Medicine	Endowed Department			1(0)			1(0)	
Spinal Surgery and Medical Engineering	Endowed Department	1(0)		1(0)			2(0)	
Community Medicine, Kameyama	Endowed Department				3(0)		3(0)	
Community Medicine, Nabari	Endowed Department			1(0)	2(0)		3(0)	
Family and Community Medicine, Mie	Endowed Department				3(0)		3(0)	
Community Cooperated Cardiology	Endowed Department			1(0)	1(0)		2(0)	
Advanced Diagnostic Imaging	Endowed Department	1(0)				1(0)	1(0)	
Prevention of Perinatal, Neonatal and Infantile Developmental Disabilities	Endowed Department	1(1)					1(1)	
Endowed Department of Regional Alliances for Abdominal Emergency Medicine	Endowed Department				1(0)		1(0)	
Advanced cancer therapy	Endowed Department	1(0)				1(0)	1(0)	
Immuno-gene Therapy	Industry-Academic-Government Cooperation	2(0)	1(0)			1(0)	4(0)	
Clinical Human Research Promotion and Drug Department	Industry-Academic-Government Cooperation				1(1)		1(1)	
Innovative Neuro-Intervention Radiology	Industry-Academic-Government Cooperation	1(0)				1(0)	1(0)	
Systems Pharmacology	Industry-Academic-Government Cooperation	1(0)				1(0)	1(0)	

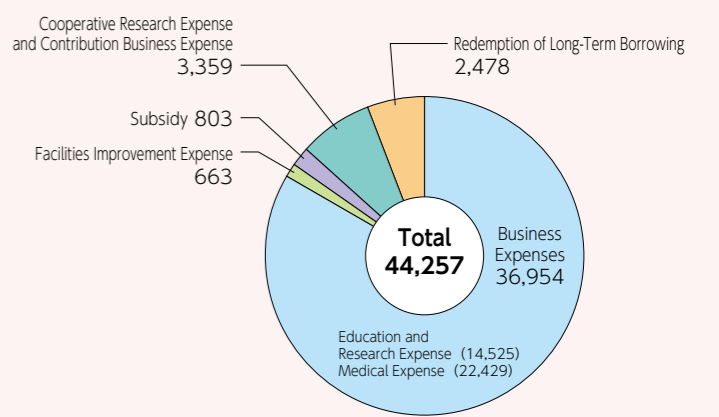
*The numbers in parentheses represent the numbers of female staff.

Budget (Academic Year 2017)

Revenues (Unit: 1,000,000 Yen)



Expenses (Unit: 1,000,000 Yen)



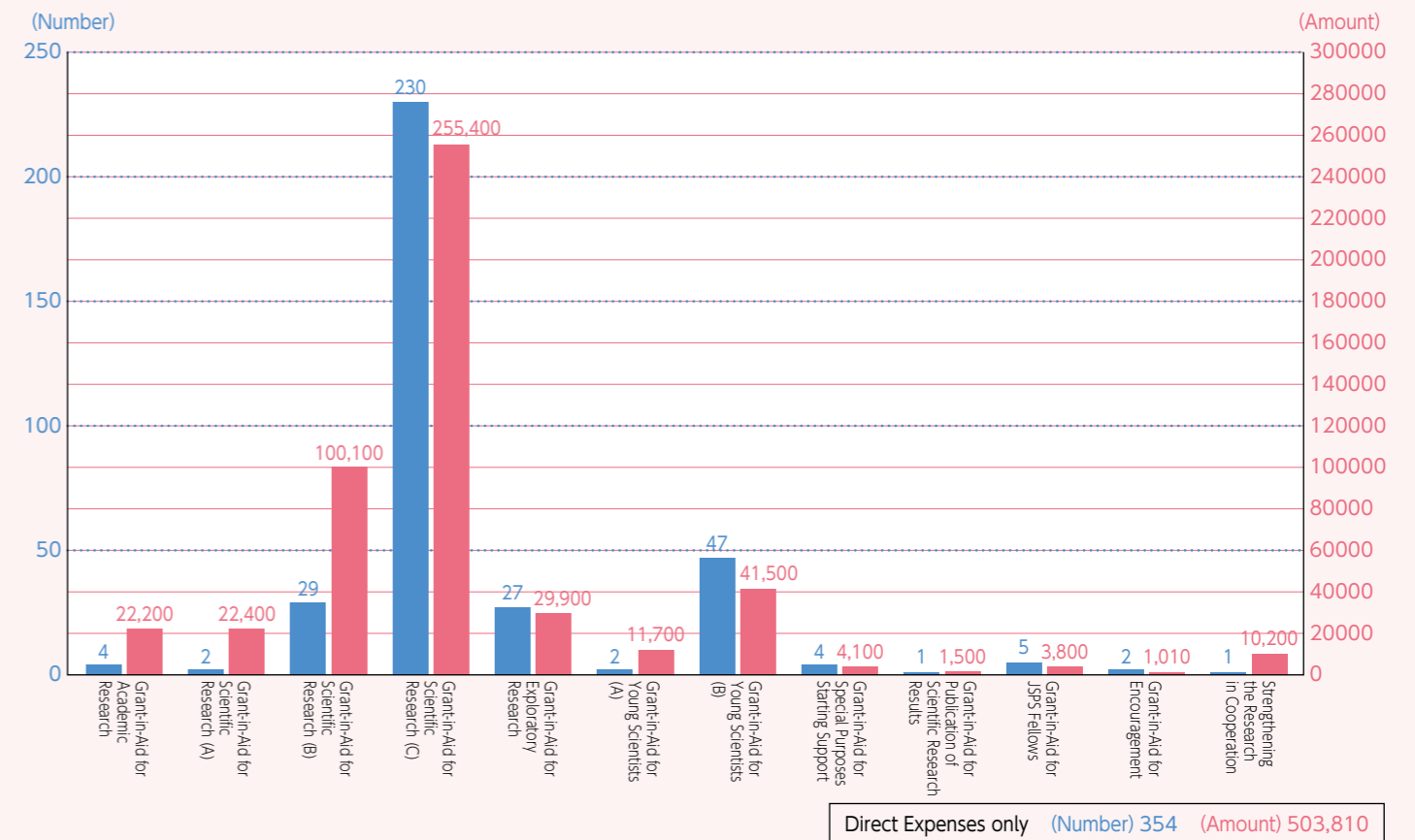
Grant-in-Aid for Scientific Research & Research in Cooperation with Private Sectors (2016)

Research in Cooperation with Private Sectors (Achievement) (Unit: 1,000 Yen) (Round down to the 1,000)

Category	Number	Amount
Research in Cooperation with Private Sectors	263	429,343
Research in Trust	199	766,731
Grants and Endowments	1,221	802,038
Total	1,683	1,998,112

Grant-in-Aid for Scientific Research

(Unit: 1,000 Yen)



Direct Expenses only (Number) 354 (Amount) 503,810

Numbers of 2017 Applicants and Entrants

As of April 1, 2017

Classification	Admission Capacity	Applicants			Examinees			Entrants				
		Male	Female	Total	Male	Female	Total	Male	Female	Total		
Faculties	Humanities, Law and Economics	245	(10) 576	(5) 603	(15) 1,179	(10) 423	(4) 398	(14) 821	(1) 125	(2) 142	(3) 267	
	Education	200	(3) 511	(1) 619	(4) 1,130	(2) 379	(0) 488	(2) 867	(1) 82	(0) 126	(1) 208	
	Medicine	205	463	473	936	309	251	560	90	116	206	
	Engineering	400	(8) 1,863	(3) 328	(11) 2,191	(7) 1,270	(3) 225	(10) 1,495	(2)*1) 362	(0) 53	(2)*1) 415	
	Bioresources	260	(0) 669	(0) 598	(0) 1,267	(0) 484	(0) 390	(0) 874	(0) 145	(0) 129	(0) 274	
	Grand Total	1,310	(21) 4,082	(9) 2,621	(30) 6,703	(19) 2,865	(7) 1,752	(26) 4,617	(4) 804	(2) 566	(6) 1,370	
Graduate Schools	Humanities and Social Sciences (Master Course)	15	(0) 9	(5) 11	(5) 20	(0) 9	(5) 11	(5) 20	(0) 5	(3) 7	(3) 12	
	Education (Master Course)	Educational Science	27	(0) 14	(3) 10	(3) 24	(0) 14	(3) 10	(3) 24	(0) 11	(3) 9	(3) 20
		Advanced Practice for Professional Teachers and School Leaders	14	(0) 8	(0) 10	(0) 18	(0) 8	(0) 10	(0) 18	(0) 7	(0) 8	(0) 15
	Medicine	Master (Medicine)	12	(0) 5	(0) 4	(0) 9	(0) 5	(0) 3	(0) 8	(0) 5	(0) 3	(0) 8
		Master (Nursing)	11	(0) 0	(0) 12	(0) 12	(0) 0	(0) 12	(0) 12	(0) 0	(0) 11	(0) 11
		Doctoral (Nursing)	3	(0) 0	(0) 4	(0) 4	(0) 0	(0) 4	(0) 4	(0) 0	(0) 4	(0) 4
		Doctoral	45	(2) 26	(0) 10	(2) 36	(2) 26	(0) 10	(2) 36	(2) 25	(0) 10	(2) 35
	Engineering	Master	216	(3) 250	(4) 26	(7) 276	(3) 246	(4) 25	(7) 271	(1) 203	(4) 23	(5) 226
		Doctoral	16	(0) 5	(0) 1	(0) 6	(0) 5	(0) 1	(0) 6	(0) 5	(0) 1	(0) 6
	Bioresources	Master	88	(6) 71	(6) 33	(12) 104	(6) 68	(2) 28	(8) 96	(6) 62	(2) 24	(8) 86
		Doctoral	12	(1) 10	(0) 2	(1) 12	(1) 10	(0) 2	(1) 12	(1) 9	(0) 1	(1) 10
	Regional Innovation Studies	Master	15	(0) 20	(0) 3	(0) 23	(0) 20	(0) 3	(0) 23	(0) 13	(0) 3	(0) 16
		Doctoral	5	(1) 5	(1) 1	(2) 6	(1) 5	(1) 1	(2) 6	(1) 5	(1) 1	(2) 6
	Grand Total	479	(13) 423	(19) 127	(32) 550	(13) 416	(15) 120	(28) 536	(11) 350	(13) 105	(24) 455	

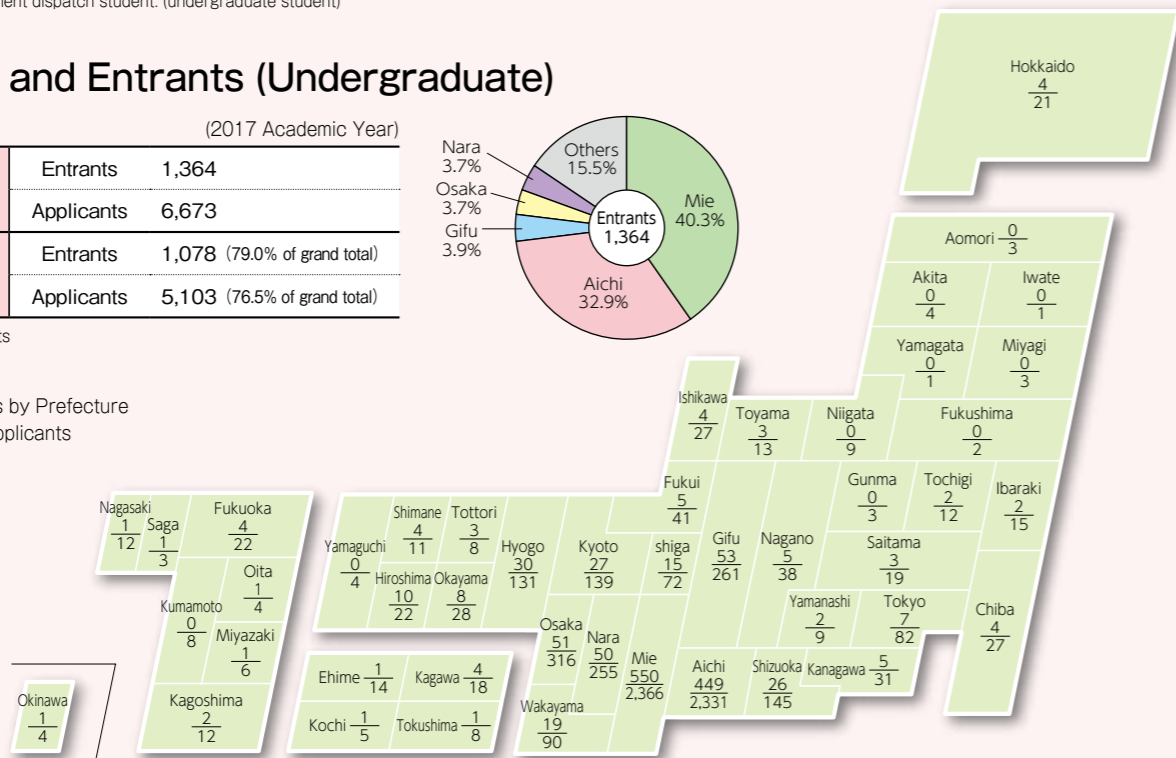
The numbers in parentheses represent the numbers of international students.
*Includes the Malaysia Government dispatch student. (undergraduate student)

Applicants and Entrants (Undergraduate)

		(2017 Academic Year)	
Grand Total	Entrants	1,364	
	Applicants	6,673	
Tokai District (Mie, Aichi, Gifu and Shizuoka Prefs.)	Entrants	1,078 (79.0% of grand total)	
	Applicants	5,103 (76.5% of grand total)	

*Excluding international students

Map: Entrants vs. Applicants by Prefecture
Upper: Entrants Lower: Applicants



Students Achieving the Proficiency Others=Level of Upper Secondary School Graduates 5/15, Overseas Returnees 0/1, Graduates from recognized overseas institutions 0/1, Overseas Schools 0/1

Number of 2016 Graduates and Number of Degrees Conferred

Faculties

The numbers in parentheses represent the numbers of females.

Faculties	Departments and Courses	Graduates	
		2016 Academic Year	Cumulative Total
Humanities, Law and Economics	Humanities	(80) 112	(4,757) 8,892
	Law and Economics	(96) 193	
	Social Sciences	(0) 0	
	Subtotal	(176) 305	
Education	School Teachers Training	(81) 142	(10,241) 18,627
	Information Science Education	(8) 22	
	Continued Education	(10) 15	
	Human Development Science	(23) 28	
Subtotal	(122) 207		
Medicine	Medicine	(41) 122	(2,202) 5,603
	Nursing	(77) 81	
	Subtotal	(118) 203	
Engineering	Mechanical Engineering	(5) 82	(1,247) 14,755
	Electrical and Electronic Engineering	(2) 100	
	Chemistry for Materials	(20) 96	
	Architecture	(7) 49	
	Information Engineering	(5) 57	
	Physics Engineering	(0) 40	
	Subtotal	(39) 424	
Bioresources	Sustainable Resource Sciences	(30) 71	(2,741) 7,112
	Environmental Science and Technology	(30) 89	
	Life Sciences	(47) 100	
	Subtotal	(107) 260	
(Previous) Agriculture	—	(222) 6,978	
(Previous) Fisheries	—	(56) 944	
Total (1)	(562) 1,399	(21,466) 62,911	

One-Year Graduate Courses and Special Course

Divisions	Graduates	
	2016 Academic Year	Cumulative Total
One-Year Graduate Courses	(53) 74	(197) 352
Special Course	(18) 609	(287) 1,113
Total (3)	(90) 369	(1,982) 9,637
Grand Total (1) + (2) + (3)	(24,060)	76,070

The numbers in parentheses represent the numbers of females.

College of Medical Sciences

Department	Graduates	
	2016 Academic Year	Cumulative Total
Nursing	(704)	715

The numbers in parentheses represent the numbers of females.

Graduate Schools

The numbers in parentheses represent the numbers of females.

Graduate Schools	Courses	Graduates	
		2016 Academic Year	Cumulative Total
Humanities and Social Sciences	Master Course	(7) 13	(203) 396
	Master Course	(18) 34	(477) 1,005
Medicine	Master Course	(16) 21	(248) 378
	Doctoral Course	(10) 39	(185) 1,234
Engineering	Master Program	(12) 209	(373) 4,227
	Doctoral Program	(1) 14	(28) 309
Bioresources	Master Program	(32) 83	(644) 2,315
	Doctoral Program	(5) 6	(75) 290
Regional Innovation Studies	Master Program	(5) 9	(21) 72
	Doctoral Program	(0) 5	(3) 19
Engineering	Master Course	—	(31) 1,164
Bioresources	Master Course	—	(6) 152
(Previous) Agriculture	Master Course	—	(12) 378
(Previous) Fisheries	Master Course	—	(1) 107
Total (2)		(106) 433	(2,307) 12,046

Number of Degrees Conferred

Special Fields	Master Degree			Doctoral Degree		
	2016 Academic Year	Cumulative Total	Special Fields	2016 Academic Year	Cumulative Total	
Humanities	(5) 7	(122) 207	Medical Science	By Completing the Course	(10) 39	(185) 1,234
Social Science	(2) 6	(81) 189		By Submitting Thesis	(2) 6	(104) 880
Education	(18) 34	(477) 1,005	Engineering	By Completing the Course	(1) 14	(28) 309
Medicine	(8) 12	(101) 224		By Submitting Thesis	(0) 0	(1) 32
Nursing	(8) 9	(147) 154	Philosophy	By Completing the Course	(5) 11	(78) 309
Engineering	(12) 209	*1 (404) 5,391		By Submitting Thesis	(2) 3	(14) 93
Bioresources	(32) 83	*2 (650) 2,467	Total		(20) 73	(410) 2,857
Academic	(5) 9					
(Previous) Agriculture	—					
(Previous) Fisheries	—					
Total	(90) 369	(1,982) 9,637				

The numbers in parentheses represent the numbers of females.

*1 : The cumulative total of degrees conferred is the total graduates in the previous master course of the Engineering which is 1,164 (31) and the current master program of the Engineering.

*2 : The cumulative total of degrees conferred is the total graduates in the previous master course of the Bioresources which is 152 (6) and the current master program of the Bioresources.

Mutual Cooperation Agreement with Community

As of April 1, 2017

Name of Organization	Agreement Date
◆National Institute	
Chubu Regional Development Bureau, Ministry of Land, Infrastructure, Transport and Tourism	Dec. 19, 2011
◆Mie Prefecture	
Agreement on Mutual Cooperation for Disaster Control with Mie Prefecture	Dec. 21, 2005
Specific Agreement on Mutual Cooperation for Disaster Control with Mie Prefecture	Mar. 20, 2007
Mie Prefectural Science and Technology Promotion Center	Mar. 23, 2007
Collaboration Agreement on the field of "Medicine" with Mie Prefecture	Jan. 29, 2010
Mie Prefecture (Department of Disaster Mitigation)	May 26, 2010
Collaboration Agreement on Promotion of Demonstrating Arts with Mie University	Sep. 12, 2013
Mutual Agreement with Mie Prefectural Museum	Feb. 26, 2014
Agreement on Establishment of Mie Disaster Mitigation Center with Mie Prefecture	Apr. 1, 2014
Agreement on Hosting of International Conferences with Mie Prefecture	Nov. 22, 2016
◆Agreement on mutual friendship cooperation with municipalities	
Owase City	Dec. 2, 2002
Yokkaichi City	Oct. 7, 2003
Kameyama City	Jan. 27, 2004
Toba City	Mar. 22, 2004
Asahi cho	June 9, 2004
Shima City	June 21, 2005
Iga City	Jan. 23, 2006
Tsu City	Feb. 20, 2009
Suzuka City	June 30, 2010

Name of Organization	Agreement Date
Ise City	Jan. 27, 2011
Kuwana City	July 1, 2013
Matsusaka City	Aug. 29, 2013
Minami Ise cho	June 02, 2015
Tamaki cho	Oct. 05, 2016
Kisosaki cho	Jan. 16, 2017
Meiwa cho	Jan. 19, 2017
Toin cho	Jan. 23, 2017
Odai cho	Feb. 14, 2017
Kihoku cho	Feb. 14, 2017
Nabari city	Feb. 20, 2017
Kumano city	Feb. 21, 2017
Mihama cho	Feb. 21, 2017
Kiho cho	Feb. 21, 2017
Taki cho	Feb. 24, 2017
Watarai cho	Mar. 27, 2017
Komono cho	Mar. 28, 2017
Inabe city	Mar. 30, 2017
Kawagoe cho	Mar. 30, 2017
Taiki cho	Mar. 31, 2017
◆Educational Institutions	
Tokai Fishery & Science Association Foundation	Mar. 18, 2004
Wakayama University	Nov. 30, 2004
Suzuka University of Medical Science	June 22, 2007
Mie Prefecture Board of Education	Nov. 30, 2007
University Support Project for Strategic Collaboration	Sep. 26, 2008
Asahi University	Feb. 3, 2010

Name of Organization	Agreement Date
Nagoya University and Aichi University of Education	Apr. 24, 2012
Ritsumeikan University	Aug. 28, 2013
Fujita Health University	Dec. 3, 2014
Mie Veterinary Medical Association	Mar. 27, 2015
Collaborative Agreement for the Development of Technology, Research and Education on Massive Landslide in the Kii Cardillera	Mar. 27, 2015
Agreement on Consortium of Higher Education in Mie with Mie Prefecture and Higher Education Institutions within the Prefecture	Mar. 29, 2016
◆Private Sectors	
Auto Networks Technologies, Ltd.	May 25, 2005
CHUBU Electric Power Co. Inc.	Sep. 14, 2005
Fuji Electric Co., Ltd.	Feb. 22, 2006
Hyakugo Economic Research Institute, The Hyakugo Bank Ltd.	Mar. 10, 2006
Development Bank of Japan	Mar. 10, 2006
Okasan Holdings Inc.	June 5, 2006
The Mie Bank Ltd.	May 28, 2007
Sumitomo Mitsui Trust Bank	Nov. 1, 2007
The Daisan Bank	Apr. 20, 2009
Mitsubishi UFJ Research and Consulting	July 9, 2009
JA-Mie Chuokai	Nov. 12, 2009
C Energy Co.	Dec. 22, 2011
Nippon Menard Cosmetic Co., Ltd.	Mar. 9, 2015
Japan Finance Corporation Tsu Branch	Mar. 31, 2016
Mobilityland Corporation	Nov. 18, 2016

Mie University Regional Contribution Activities

(2016 Academic Year)

No.	Representatives		Activities
	Organizers	Name	
1	College of Liberal Arts and Sciences	SETO, Minako	Promotion of Strategies to Address School Non-attendance through Collaboration among Universities, the Board of Education, and Schools in Suzuka City
2	Faculty of Humanities, Law and Economics	YOSHIMARU, Katsuya	Community Revitalization using Rakugo Comic Storytelling
3	Faculty of Education	OKANO, Noboru	Activities to Promote Improvement of Physical Fitness among Infants, Children and Students in Tsu City
4	Graduate School of Engineering	ASANO, Satoshi	Promotion of Townscape Development through Exhibitions Planned at Isekawasakisyouninkan
5	Graduate School of Engineering	YOSHIKAWA, Takamasa	Human Resources Development and Support for Local Small and Medium-sized Enterprises using Manufacturing Studios
6	Graduate School of Bioresources	TACHIBANA, Yoshihiro	Project to Improve Mie's "Weather Capability" through Collaboration with Local TV Stations and Certified Weather Forecasters
7	Graduate School of Bioresources	NONAKA, Hiroshi	Support for Revitalization of Cellulose Nanofiber (CNF) Business in Mie Prefecture
8	Technical Expert, Natural Science Technical Division (Graduate School of Bioresources)	NORO, Akemi	Science Lessons to Foster Scientific Thinking from an Early Age: Enjoying Science Experiments with Children in After School Care
9	Faculty of Humanities, Law and Economics	OKOCHI, Tomoko	Senior High School Student for a Day program for international students
10	Faculty of Humanities, Law and Economics	YOSHIDA, Etsuko	Exploring Workplace Issues to Support Multicultural Co-living: Communication Behavior Survey for Information Sharing and Risk Avoidance in Contact Situations
11	Faculty of Education	UOZUMI, Akio	Development of an industry-academia-government collaboration program to foster "future innovators in science and technology"
12	Faculty of Education	OSUMI, Setsuko	Sports exchange activities centered on lifelong participation in sports
13	Graduate School of Bioresources	NARIOKA, Hajime	Bura-doboku: Production of historical discovery walking tour videos from a civil engineering perspective
14	Center for Student Support	GOTO, Ayafumi	Promotion of activities to prevent bullying through collaboration across families, schools, and communities in Kuwana City
15	Graduate School of Engineering	MAEDA, Takao	Practical Study on Environmental Issues Focusing on Wind Power Generation for Elementary School and Junior High School Students

Mie University Research Centers

Centers for Research Excellence

As of April 1, 2017

No.	Name of Centers	Representatives
1	Mie University Advanced Battery Research Center	IMANISHI, Nobuyuki, Professor, Graduate School of Engineering
2	Mie University Robotics Mechatronics Research Center for Symbiosis with Human	IKEURA, Ryojun, Professor, Graduate School of Engineering
3	Materials Science and Advanced Electronics Created by Singularity	MIYAKE, Hideto, Professor, Graduate School of Regional Innovation Studies

Research Centers

As of April 1, 2017

No.	Name of Centers	Representatives
1	Mie University Research Center for Genomic Medicine	YAMADA, Yoshiji, Professor, Organization for the Promotion of Regional Innovation
2	The Center of Ultimate Technology on Nano-Elections	HIRAMATSU, Kazumasa, Professor, Graduate School of Engineering
3	Mie University Energy and Environment Engineering Research Center	MAEDA, Takao, Professor, Graduate School of Engineering
4	Mie University Mie ECO System Research Center	PARK, Hye-Sook, Professor, Faculty of Humanities, Law and Economics
5	Mie University Medical Zebrafish Research Center	TANAKA, Toshio, Professor, Graduate School of Medicine
6	Mie University Brain Science and Animal Model Research Center	NARITA, Masaaki, Professor, Graduate School of Medicine
7	Mie University Biobank Research Center	NAKATANI, Kaname, Professor, Graduate School of Medicine
8	Mie University Research Center for Matrix Biology	IMANAKA, Kyoko, Associate Professor, Graduate School of Medicine
9	Mie University Soft Matter Chemistry Research Center	KITAGAWA, Toshikazu, Professor, Graduate School of Engineering
10	Mie University Next Generation ICT Research Center	ISU, Naoki, Professor, Graduate School of Engineering
11	Center of Lateral Laboratory Associations in Bioengineering	SHIMAOKA, Kaname, Professor, Graduate School of Medicine
12	Mie University Research Center Process for Environmental Load Reduction	KANEKO, Satoshi, Professor, Graduate School of Engineering
13	Mie University Research Center of Environmental Technique for Architecture	NAGAI, Hisaya, Professor, Graduate School of Engineering
14	Mie University Center for Comprehensive Cancer Immunotherapy	SHIKU, Hiroshi, Graduate School of Medicine
15	Mie University Research Center for Intractable Diseases	GABAZZA EC., Professor, Graduate School of Medicine
16	Mie University Seaweed Biorefinery Research Center	SHIBATA, Toshiyuki, Associate Professor, Graduate School of Bioresources
17	Research Center for VLP Vaccine Development	NOSAKA, Tetsuya, Professor, Graduate School of Medicine
18	Center for congenital heart disease and Kawasaki disease in Mie University	MITANI, Yoshihide, Professor, University Hospital

Extension Courses and Others (2016 Academic Year)

Extension Courses

Department	Course Title	Number of Event	Total Number of Participants (Approx.)
Faculty of Humanities, Law and Economics	Ninja Culture Research Project	60	2,171
Faculty of Education	368th Learning Support Research Workshop (regular April workshop)	19	4,389
Faculty of Medicine/University Hospital	27th Extension Lecture for the General Public: Is Your Heart OK?	87	5,539
Faculty of Engineering	34th Architecture Exhibition 2016, Department of Architecture, Faculty of Engineering,	18	875
Faculty of Bioresources	Mini-Symposium with Wageningen University, Netherlands	63	1,233
Graduate School of Regional Innovation Studies	8th International Workshop on Regional Innovation Studies(IWRIS, 2016)	1	139
College of Liberal Arts and Sciences	Mie University Liberal Arts and Sciences Education Symposium 2016	6	202
Others	Ise-Shima Exhibition of Materials in Collection	306	22,841
Total		560	37,389

Lectures for Renewing Teaching Certificate

Areas	Course Title	Number of Event	Total Number of Participants (Approx.)
Mandatory Areas	Current Education I, etc.	9	701
Mandatory Elective Areas	Issues in Special Needs Education in Mie Prefecture, etc.	27	664
Elective Areas	Introduction to Chinese Conversation, etc.	105	1,982
Total		141	3,347

Delivery Lectures (Intended for high school)

Department	Course Title	Number of Event	Total Number of Participants (Approx.)
Faculty of Humanities, Law and Economics	Democracy and Liberty, etc.	49	1,953
Faculty of Education	Effective and Efficient Learning Approaches and Compelling Presentations, etc.	6	240
Faculty of Medicine	Fighting the Most Intractable Cancer: Pancreatic Cancer and the Gift of Life through Liver Transplantation, etc.	19	535
Faculty of Engineering	The World of Electric Cars and Hybrids, etc.	26	841
Faculty of Bioresources	Disappearing Forests in the Sea, etc.	18	999
Total		118	4,568

Campus Map



Postal Code: 514-8507
Mie University
 1577 Kurimamachiya-cho Tsu city, Mie
 TEL +81-(0) 59-232-1211

**Graduate School of Medicine,
 Faculty of Medicine,
 University Hospital**
 2-174 Edobashi Tsu city, Mie
 TEL +81-(0) 59-232-1111

Map of Affiliated Schools

Postal Code: 514-0062
 Kindergarten 523 Kannonji-cho Tsu city, Mie TEL +81-(0) 59-227-1711
 Primary School 359 Kannonji-cho Tsu city, Mie TEL +81-(0) 59-227-1295
 Junior High School 471 Kannonji-cho Tsu city, Mie TEL +81-(0) 59-226-5281
 Mentally Challenged Children's School 484 Kannonji-cho Tsu city, Mie TEL +81-(0) 59-226-5193

Map of Kii-Kuroshio Bio-Regional Field Science Center, Farm Station

Postal Code: 514-2221
 2072-2 Takanoo-cho Tsu city, Mie
 TEL +81-(0) 59-230-0044

Map of Kii-Kuroshio Center Forest Station

Postal Code: 515-3532
 2735 Kawakami Misugi-cho Tsu city, Mie
 TEL +81-(0) 59-274-0135

Map of Kii-Kuroshio Bio-Regional Field Science Center, Fishery Research Station

Postal Code: 517-0703
 4190-172 Wagu Shima-cho Shima city, Mie TEL +81-(0) 599-85-4604

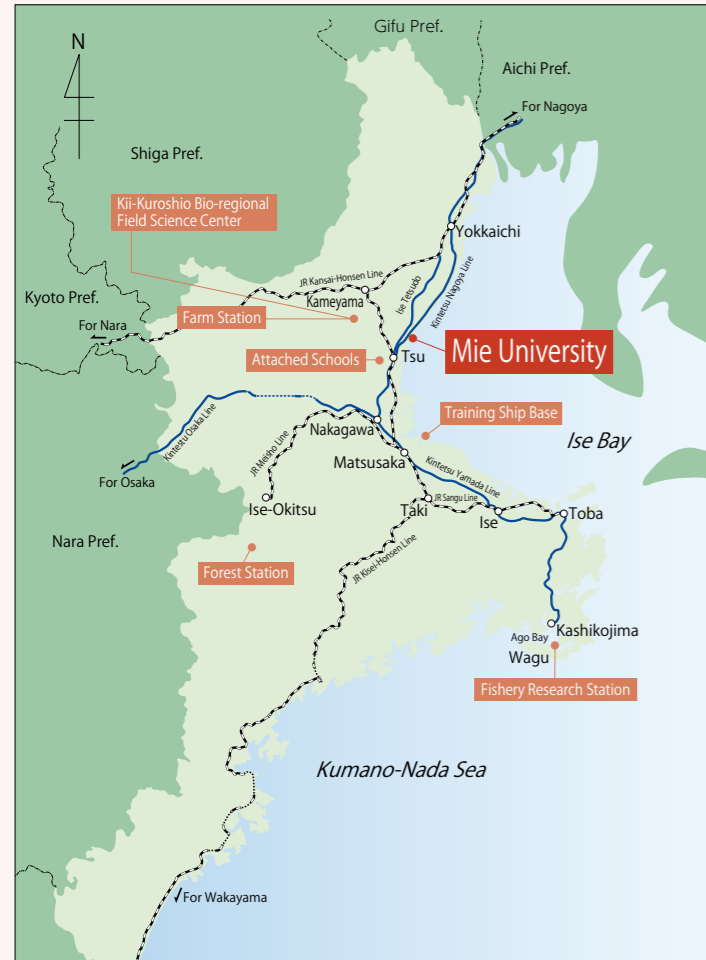
Training Ship "SEISUI MARU" Base
 1819-18 Aza Tsukiji, Ooguchi-cho Matsusaka city, Mie
 TEL: +81-(0) 598-51-0710
 515-0001
 TEL: +81-(0) 598-50-1066 (Matsusaka Port)
 TEL: +81-(0) 90-3022-8767 (Ship Mobile)
 TEL: 001-010-870-764623655 (INMARSAT)

Yokkaichi Community-based Research Network
 c/o Mie-Local Industry Development Foundation (Jibasan Mie), 4th Floor
 1-3-18 Yasujima Yokkaichi city, Mie 510-0075
 TEL: +81-(0) 59-353-8260

Iga Community-based Research Institute
 c/o Regional Industrial Creation Center by Industry-academiagovernment Collaboration "Yume Techno Iga"
 1-3-3 Yumegaoka Iga city, Mie 518-0131
 TEL: +81-(0) 595-41-1071

Location of Campus

Mie Prefecture



Tsu

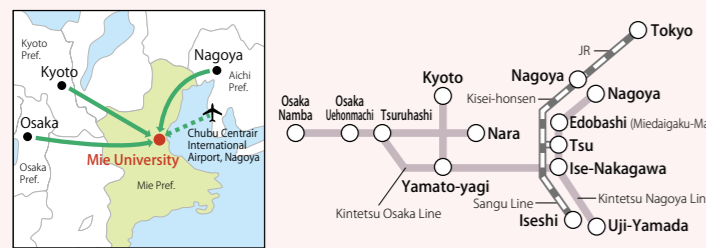


Campus Addresses

<http://www.mie-u.ac.jp/>

Division	Address	Phone
Administration Bureau	1577 Kurimamachiya-cho Tsu city, Mie Pref. 514-8507	+81-(0) 59-232-1211
College of Liberal Arts and Sciences		
University Library		
Organization for the Promotion of Regional Innovation		
Industrial Collaboration Risk Management Office		
Intellectual Property Office		
Regional Area Strategy Center		
Disaster Mitigation Research Center		
Advanced Science Research Promotion Center		
Department of Plant Functional Genomics		
Department of Animal Functional Genomics		
Department of Human Functional Genomics	1577 Kurimamachiya-cho Tsu city, Mie Pref. 514-8507	+81-(0) 59-232-1211
Department of Bioinformatics		
Department of Electron Microscope	2-174 Edobashi Tsu city, Mie Pref. 514-8507	+81-(0) 59-232-1111
Department of Radiation Chemistry and Radiation Safety Management		
Open Innovation Facilities	1577 Kurimamachiya-cho Tsu city, Mie Pref. 514-8507	+81-(0) 59-232-1211
Department of Instrumental Analysis/Department of Research Support		
Research Institutes for Excellence		
Campus Incubators		
Center for International Education and Research		
Center for Information Technologies and Networks		
Organization for the Development of Higher Education and Regional Human Resources		
Center for Student Support		
Global Environment Center for Education & Research (Mie GECER)		
Admission Center		
Center for Physical & Mental Health		
Faculty of Humanities, Law and Economics		
Faculty of Education	523 Kan'nonji-cho, Tsu city, Mie Pref. 514-0062	+81-(0) 59-227-1711
Kindergarten		
Primary School	359 Kan'nonji-cho, Tsu city, Mie Pref. 514-0062	+81-(0) 59-227-1295
Junior High School		
Mentally Challenged Children's School	471 Kan'nonji-cho, Tsu city, Mie Pref. 514-0062	+81-(0) 59-226-5281
Faculty of Medicine	484 Kan'nonji-cho, Tsu city, Mie Pref. 514-0062	+81-(0) 59-226-5193
University Hospital		
Faculty of Engineering	2-174 Edobashi Tsu city, Mie Pref. 514-8507	+81-(0) 59-232-1111
Faculty of Bioresources		
Kii-Kuroshio Bio Regional Field Science Center	2072-2 Takano-cho Tsu city, Mie Pref. 514-2221	+81-(0) 59-230-0044
Farm Station		
Forest Station	2735 Kawakami Misugi-cho Tsu city, Mie Pref. 515-3532	+81-(0) 59-274-0135
Fishery Research Station		
Training Ship "SEISUI MARU"	Matsusaka Port	+81-(0) 598-50-1066
	Auto Shipping Telephone	+81-(0) 90-3022-8767
	INMARSAT Telephone	001-010-870-764623655
Training Ship Base	1819-18 Okuchi-cho Matsusaka city, Mie Pref. 515-0001	+81-(0) 598-51-0710
Graduate School of Regional Innovation Studies	1577 Kurimamachiya-cho Tsu city, Mie Pref. 514-8507	+81-(0) 59-232-1211
Iga Community-based Research Institute	c/o Hightopia Iga 3F 500 Ueno-marunouchi Iga city, Mie Pref. 518-0873	+81-(0) 59-231-9194 (Office, Faculty of Humanities, Law and Economics)

Access



- 1 By Bus from Tsu Station East
Take Mie Kotsu (Sanco) Bus at the No.4 bus stop bound for No.6, 40, 51, 52, 53, or 56 bus and get off at "Mie Daigaku-mae." Get off at "Daigaku-byoin-mae" for the University Hospital, Faculty of Medicine, and Faculty of Engineering
- 2 By taxi from Tsu Station (10 min.)
- On foot from Edobashi Station (15 min.)
- By Tsu Airport Line (high speed boat) from Chubu Centrair International Airport, Nagoya to Tsu Nagisamachi Port (Tsu city Marina) (45 min.)
 - 1 By Mie Kotsu (Sanco) Bus from Tsu Nagisamachi Port to Tsu Station (15 min.)
 - 2 By taxi from Tsu Nagisamachi Port to Mie University (15 min.)

By Kintetsu Express

From Nagoya	Kintetsu Nagoya Station	60 min.	Edobashi Station	By Walk
From Kyoto/Osaka	Ise-Nakagawa Station	15 min.		

By Kintetsu Limited Express

From Nagoya	Kintetsu Nagoya Station	50 min.	Tsu Station	By Bus
From Osaka	Osaka Namba Station	90 min.		
From Kyoto	Kyoto Station	110 min.		

By JR Mie Rapid

From Nagoya	JR Nagoya Station	50 min.	By Taxi
-------------	-------------------	---------	---------



(Logo of Mie University)

Designed by Professor Emeritus Shuhei Miyata

- "M" of Mie
- "U" of University
- Opening book
- Image of Ocean and Wave



October, 2017

Edited and Published by International Relations Office,
Mie University

1577 Kurimamachiya-cho Tsu city, Mie Pref.

514-8507 JAPAN