



MIEU REPORT

Outline Data(English ver.)

2024

CONTENTS

I Vision

● Our Mission and Vision

3

II Governance System

● Governance System

4

● Operational Organization Chart

5

● 2024 Administrative Staff

7

● Historical Chart

9

● Faculties and Graduate Schools /
Institutes for Education and Research

11

III DATA

● Number of Staff Members

16

● Admission Capacity and Number of Students /
Schools Affiliated with Faculty of Education

17

● Number of Scholarship Grantees

18

● Numbers of 2024 Applicants and Entrants

19

● Number of 2023 Graduates and Number of Degrees Conferred

20

● Career Paths of 2023 Graduates

21

● Employment Situation of 2023 Graduates by Industries (Faculties) /
Employment Situation of 2023 Graduates by Region (Faculties) /
Employment Situation of 2023 Graduates by Prefectures (Faculties)

23

● Number of International Students /
International Exchange Projects of 2023 (Grant Recipients)

24

● International Exchange

25

● University Library

27

● University Hospital

28

● Mutual Cooperation Agreement with Community

29

● Extension Courses and Others (Academic Year 2023)

30

● Campus Map

31

● Welfare Facilities / Land and Buildings

35

● Campus Addresses

36

● Location of Campus / Access

37

Faculties

5 Faculties

6 Departments

1 program

- Humanities,
Law and Economics

Humanities, Law and Economics
- Education

Training Course for School Teachers
- Medicine

School of Medicine, School of Nursing
- Engineering

Department of Engineering
- Bioresources

Bioresources

Graduate Schools

6 Graduate Schools

- Humanities and Social Sciences
- Education
- Medicine
- Engineering
- Bioresources
- Regional Innovation Studies

Number of Staff Members (As of May 1, 2024)

2,119

Executive Officers 9 | Teachers 743 | Staff 1,367

Number of Undergraduates (As of May 1, 2024)

5,912

Number of Graduates (As of May 1, 2024)

1,164

Number of International Students (As of May 1, 2024)

241

Number of Students Studying Abroad (Academic Year 2023)

16

International Exchange Status (As of April 1, 2024)

Partner Universities and Institutions

University Level in 24 Countries & Regions

73 Universities / Institutions

Faculty Level in 24 Countries & Regions

46 Universities / Institutions

Budget scale (Academic Year 2024)

Revenues * Expenses

54,412 million yen

Research in Cooperation with Private Sectors (Achievement) (Academic Year 2023)

Number 1,540 Projects

Amount 2,792 million yen

Area of land and building (As of May 1, 2024)

Area of land 5,509,850㎡
(proportion of leased land 93,299 ㎡)

Area of building 323,225㎡

University Library

Japanese Books 704,288 Books

Foreign Books 227,844 Books

Total 932,132 Books
(As of April 1, 2024)

Total Number of visitors 134,283
(Academic Year 2023)

University Hospital (Academic Year 2023)

Number of Beds 685 Beds

Cumulative total of hospitalized patients 205,005

Cumulative total of outpatients 344,301

Average number of hospitalized patients per day 560.1

Average number of outpatients per day 1,416.9

Academic Calendar for 2024

■ Spring Semester Starts Apr.1

■ Entrance Ceremony Apr.4

■ Foundation Anniversary of Mie University May 31

■ Spring Semester Ends Sep.30

■ Fall Semester Starts Oct.1

■ Graduation Ceremony Mar.25

■ Fall Semester Ends Mar.31

Our Mission and Vision

Our Mission

From Mie to the world, from the world to Mie — Mie University builds a better future in the spirit of co-creation with local communities.

The University engages in community-based, world-class teaching and research, and strives for co-creation with local communities in harmonious coexistence between mankind and nature.

Vision

Education

The University nurtures individuals with broad knowledge in liberal arts and sciences, highly specialized knowledge and skills, and a global perspective, capable of driving innovations in society.

Research

The University engages in research activities that conform to high international and ethical standards, producing distinctive state-of-the-art research that contributes to the world, unique community-based research, applied research that provides solutions to problems in our society, and diverse basic research that paves the way for the future.

Social Contributions

The University aspires to realize an enriched, healthy, sustainable society. It contributes to the development and revitalization of society by promoting industry-academia-government partnerships, working to solve various problems as a center for collaboration and co-creation with local communities, and implementing those solutions in society.

University Vision 2030 The power of Mie to the world, from the world to Mie — Mie University builds a better future in the spirit of co-creation with local communities.

Education: Education that brings out individuals' power to take action using links with the local community, wider society, and the world

- Nurturing individuals with the active capability to lead local communities
- Cultivating individuals committed to generating new forms of value
- Enhancing recurrent education that provides learning opportunities to local working adults

Research: Diverse and creative research to support co-creation with society

- Distinctive, state-of-the-art research that strives to be world-class
- Applied research that seeks to solve problems in society
- Diverse basic research that paves the way for the future
- Cross-disciplinary graduate schools that transcend conventional boundaries

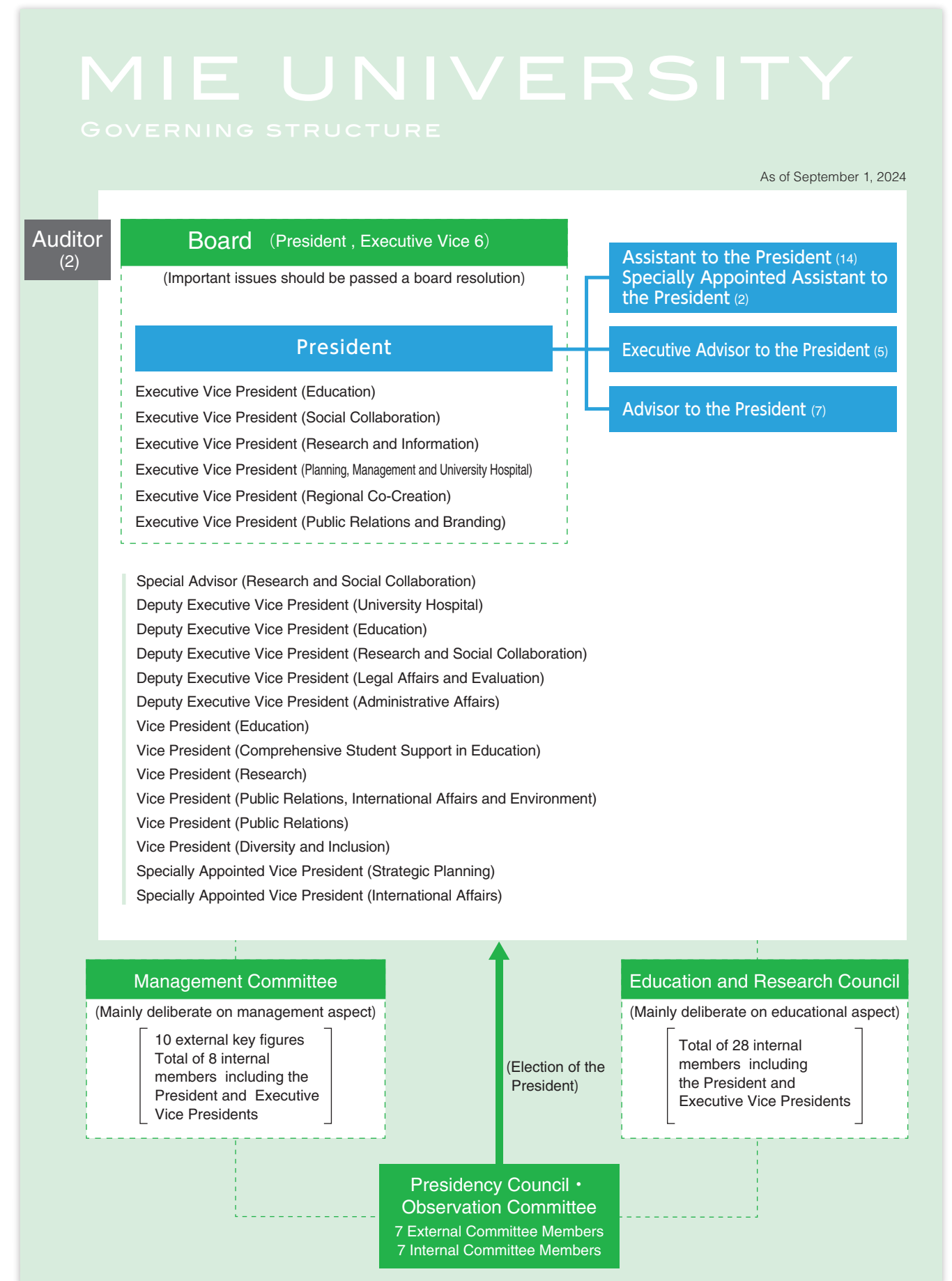
Social Contributions: Mie model of regional revitalization

- Applying leading-edge technologies in society and using them to generate novel social value
- Solving local problems and advancing local culture
- Building a safe, secure, and comfortable society

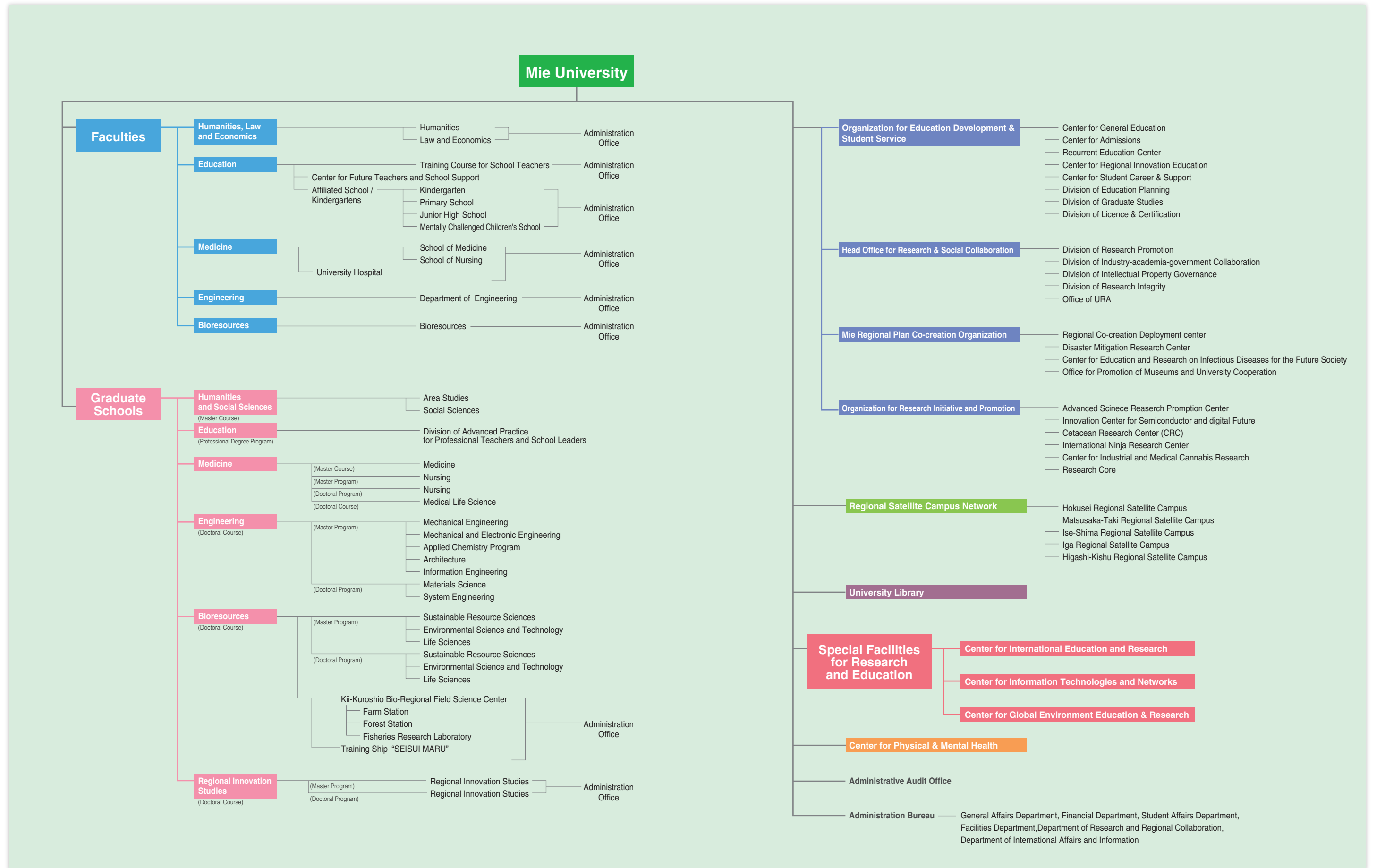
Healthcare: Development of regional healthcare through advanced medical practice and training of healthcare professionals

- Providing all residents of Mie Prefecture with high-quality healthcare
- Training healthcare professionals
- Promoting state-of-the-art medical research

Governance System



Operational Organization Chart



2024 Administrative Staff

Board

President	ITO, Masaaki
Executive Vice President (Education)	TSURUHARA, Kiyoshi
Executive Vice President (Social Collaboration)	SAKAI, Toshinori
Executive Vice President (Research and Information)	YOSHIOKA, Motoi
Executive Vice President (Planning, Management and University Hospital)	SAKUMA, Hajime
Executive Vice President (Regional Co-Creation)	NISHIOKA, Keiko
Executive Vice President (Public Relations and Branding)	TANAKA, Risa
Auditor (Business Affairs)	NAKATSU, Kiyoharu
Auditor (Accounting)	OGAWA, Yuka

Special Advisor

Special Advisor (Research and Social Collaboration)	OGATA, Masato
---	---------------

Deputy Executive Vice President

Deputy Executive Vice President (University Hospital)	IKEDA, Tomoaki
Deputy Executive Vice President (Education)	KOBAYASHI, Issei
Deputy Executive Vice President (Research and Social Collaboration)	IMANISHI, Nobuyuki
Deputy Executive Vice President (Legal Affairs and Evaluation)	ONISHI, Yasumitsu
Deputy Executive Vice President (Administrative Affairs) and Director-General for University Administration	ODAJIMA, Takahiro

Vice President

Vice President (Education)	YUASA, Yoko
Vice President (Comprehensive Student Support in Education)	TOGASHI, Kenji
Vice President (Research)	KONDO, Mineo
Vice President (Public Relations, International Affairs and Environment)	KANECO, Satoshi
Vice President (Public Relations)	MATSUDA, Yuko
Vice President (Diversity and Inclusion)	MORIWAKI, Yumiko

Specially Appointed Vice President

Specially Appointed Vice President (Strategic Planning)	NISHIMURA, Norihiro
Specially Appointed Vice President (International Affairs)	FUKUROKU, Keiko

Assistant to the President

Assistant to the President (Education)	SHIMOMURA, Tomoko
Assistant to the President (General Education)	OOI, Atsushi
Assistant to the President (Comprehensive Student Support in Education)	MATSUOKA, Mari
Assistant to the President (Student Admissions)	HIRAYAMA, Daisuke
Assistant to the President (Research)	FUNABARA, Daisuke
Assistant to the President (Early-Career Researcher Development)	YANO, Kenichi
Assistant to the President (Semiconductor Industry-Academia Partnerships)	MIYAKE, Hideto
Assistant to the President (COI-NEXT)	OKAJIMA, Kenji
Assistant to the President (Strategic Planning)	KATO, Takaya
Assistant to the President (Risk Management)	KANOU, Mikihito
Assistant to the President (Health Management)	KOBAYASHI, Yoshinao
Assistant to the President (Information)	YAMAMORI, Kazunori
Assistant to the President (Design)	OKADA, Hiroaki
Assistant to the President (Diversity and Inclusion)	BANDO, Yasuko

Specially Appointed Assistant to the President

Specially Appointed Assistant to the President (Safety Management)	YAMAGUCHI, Tsutomu
Specially Appointed Assistant to the President (Safety Management)	FUKUNAGA, Wakako

Executive Advisor to the President

Executive Advisor to the President	UCHIDA, Atsumasa
Executive Advisor to the President	KUSUI, Yoshiyuki
Executive Advisor to the President	KOMADA, Yoshihiro
Executive Advisor to the President	TSURUOKA, Shinji
Executive Advisor to the President	TOYODA, Nagayasu

Advisor to the President

Advisor to the President	ITO, Kimiaki
Advisor to the President	SHIDA, Yoshihiro
Advisor to the President	SYOYAMA, Takahiro
Advisor to the President	TAKAGI, Jyunichi
Advisor to the President	Carl B. Becker
Advisor to the President	MUKAI, Hiromitsu
Advisor to the President	WATANABE, Yoshihiko

Management Committee

(External Committee Members)		
President, The Hyakugo Bank, Ltd.	ITO, Toshiyasu	
MIE Medical Association Chair	UMAOKA, Shin	
President, Asahi University	OHTOMO, Katsuyuki	
Mayor of Kumano City	KAWAKAMI, Kanji	
Mayor of Suzuka City	SUEMATSU, Noriko	
President, MIE TOYOTA MOTOR CO.,LTD.	TAKEBAYASHI, Noriaki	
Vice Governor of Mie Prefecture	HATTORI, Hiroshi	
Director, Mie Prefectural School Chiefs Association	HAYAKAWA, Iwao	
Former Ambassador to Serbia and Montenegro	MARUYAMA, Jyunichi	
President, NTT MEDIASUPPLY CO., LTD.	YOKOYAMA, Keiko	

(Internal Committee Members)	
President	ITO, Masaaki
Executive Vice President (Education)	TSURUHARA, Kiyoshi
Executive Vice President (Social Collaboration)	SAKAI, Toshinori
Executive Vice President (Research and Information)	YOSHIOKA, Motoi
Executive Vice President (Planning, Management and University Hospital)	SAKUMA, Hajime
Executive Vice President (Regional Co-Creation)	NISHIOKA, Keiko
Executive Vice President (Public Relations and Branding)	TANAKA, Risa
Deputy Executive Vice President (University Hospital) and Director of University Hospital	IKEDA, Tomoaki
Deputy Executive Vice President (Administrative Affairs) and Director-General for University Administration	ODAJIMA, Takahiro

Education and Research Council

President	ITO, Masaaki
Executive Vice President (Education)	TSURUHARA, Kiyoshi
Executive Vice President (Social Collaboration)	SAKAI, Toshinori
Executive Vice President (Research and Information)	YOSHIOKA, Motoi
Executive Vice President (Planning, Management and University Hospital)	SAKUMA, Hajime
Executive Vice President (Regional Co-Creation)	NISHIOKA, Keiko
Executive Vice President (Public Relations and Branding)	TANAKA, Risa
Deputy Executive Vice President (University Hospital) and Director of University Hospital	IKEDA, Tomoaki
Deputy Executive Vice President (Education)	KOBAYASHI, Issei
Deputy Executive Vice President (Research and Social Collaboration)	IMANISHI, Nobuyuki
Deputy Executive Vice President (Legal Affairs and Evaluation)	ONISHI, Yasumitsu
Deputy Executive Vice President (Administrative Affairs) and Director-General for University Administration	ODAJIMA, Takahiro
Vice President (Education)	YUASA, Youko
Vice President (Comprehensive Student Support in Education)	TOGASHI, Kenji
Vice President (Research)	KONDO, Mineo
Vice President (Public Relations, International Affairs and Environment)	KANECO, Satoshi
Vice President (Public Relations)	MATSUDA, Yuko
Vice President (Diversity and Inclusion)	MORIWAKI, Yumiko
Dean, Faculty of Humanities, Law and Economics	TOYOFUKU, Yuji
Dean, Faculty of Education	ITO, Nobunari
Dean, Graduate School of Medicine	HIRAYAMA, Masahiro
Dean, Graduate School of Engineering	MORI, Kazuo
Dean, Graduate School of Bioresources	MATSUMURA, Naoto
Dean, Graduate School of Regional Innovation Studies	SUWABE, Keita
Professor, Faculty of Humanities, Law and Sciences	NOZAKI, Tetsuya
Professor, Faculty of Education	ITO, Toshiko
Professor, Graduate School of Medicine	NOSAKA, Tetsuya
Professor, Graduate School of Engineering	KUBO, Masataka
Professor, Graduate School of Bioresources	HASHIMOTO, Atsushi

Administration Bureau

Executive Director-General	ODAJIMA, Takahiro
Head, Administrative Audit Office	SHIMADA, Hideyuki
Director, General Affairs and Planning Department	UEHARA, Takayuki
Deputy Head	TAKANO, Masakazu
Head, General Affairs Office	TAKANO, Masakazu
Head, General Planning Office	OHATA, Natsu
Head, Personnel and Labor Office	ODA, Naomi
Director, Financial Department	TAKASAKI, Junya
Head, Financial Planning Office	ISHIKAWA, Yuko
Head, Financial Management Office	HASEGAWA, Kazuya

Director, Student Affairs Department	MORIMOTO, Shuichi
Head, Educational Affairs Office	OKABE, Tatsushi
Head, Student Support Office	ICHIMARU, Naoto
Head, Career Support Office	MATSUBARA, Yukishi
Head, Admission Office	MORI, Hiroyuki
Director, Facilities Department	MUKAI, Kazuhito
Head, Facility Planning Office	KONNO, Yuki
Head, Facility Management Office	NISHIMURA, Kenji
Head, Facility Maintenance Office	SHIRAI, Takashi
Director, Department of Research and Regional Collaboration	OHHATA, Ayumu
Head, Research Promotion Office	KOBAYASHI, Yasuhisa
Head, Social Cooperation Management Office	NIWA, Akira
Head, Promotion office for Regional Revitalization/Specially Appointed Head (Co-Creation Operations)	KOMADA, Masahiko
Director, Department of Ineternational Affairs and Information	YAMANAKA, Setsuko
Head, Library Office	NODA, Hideaki
Head, DX and Management Information	YAMANAKA, Setsuko
Head, International Relations Office	TOMISHIMA, Yoshio

Faculty of Humanities, Law and Economics

Dean	TOYOFUKU, Yuji
Vice Dean	IWASAKI, Yasuhiko
Head, Office for Faculty of Humanities, Law and Economics	SASAOKA, Shuichi

Faculty of Education

Dean	ITO, Nobunari
Vice Dean	MIYAOKA, Kunihide
Vice Dean	MATSUURA, Naomi
Head, Office for Faculty of Education	YOSHIDA, Yukino
Director, Integrated Center for Educational Research and Practice	OKANO, Noboru
Headmaster, Kindergarten	SUGISAWA, Kumiko
Headmaster, Primary School	YAMAMOTO, Yoshimi
Headmaster, Junior High School	YAMAGUCHI, Tsutomu
Headmaster, Mentally Challenged Children's School	NAKAGAWA, Katsumi

Graduate School of Medicine and Faculty of Medicine

Dean	HIRAYAMA, Masahiro
Vice Dean	SUZUKI, Hidenori
Vice Dean	YAMAZAKI, Hidetoshi

University Hospital

Director	IKEDA, Tomoaki
Vice Director	MIZUNO, Shugo
Vice Director	TOIYAMA, Yuij
Vice Director	INOUE, Takahiro
Vice Director/Director for School of Nursing	FUKUNAGA, Wakako
Vice Director	KANEKO, Toshihiro
Vice Director	DOHI, Kaoru
Vice Director	WATANABE, Masatoshi
Director, General Affairs Office	ITO, Atsushi
Director, Pharmacy Division	IWAMOTO, Takuya
Director, General Affairs Office	ITO, Atsushi
Deputy Head	ITO, Toshihiro
Head, General Affairs Office	AO, Yasuyuki
Head, Management Office	ITO, Toshihiro
Head, Student Affairs Office	FUKUBA, Hirofumi
Acting Head, Medical Affairs Office	OHTA, Yoshiyuki
Head, Medical Support Office	TSUGE, Satoshi

Graduate School of Engineering and Faculty of Engineering

Dean	MORI, Kazuo
Vice Dean	IKEURA, Ryojun
Head, Office of Graduate School & Faculty of Engineering	KOBAYASHI, Hiroshi

As of September 1, 2024

Graduate School of Bioresources and Faculty of Bioresources

Dean	MATSUMURA, Naoto
Vice Dean	KIMURA, Tetsuya
Vice Dean	KAKITANI, Makoto
Head, Office for Gradate School & Faculty of Bioresources	TANI, Hitoshi
Director, Kii-Kuroshio Bio-regional Field Science Center	WATANABE, Kunio
Director, Training Ship "SEISUI MARU"	NAKAMURA, Toru

Graduate School of Regional Innovation Studies

Dean	SUWABE, Keita
Vice Dean	AOKI, Masao
Vice Dean	MARUYAMA, Naoki
Head, Office for Graduate School of Regional Innovation Studies	SEKO, Kazuhiro

Organization for Education Development & Student Service

Director	TSURUHARA, Kiyoshi
----------	--------------------

Head Office for Research & Social Collaboration

Director	YOSHIOKA, Motoi
----------	-----------------

Mie Regional Plan Co-creation Organization

Director	SAKAI, Toshinori
----------	------------------

Organization for Research Initiative and Promotion

Director	YOSHIOKA, Motoi
----------	-----------------

Regional Satellite Campus Network

Director	NISHIOKA, Keiko
----------	-----------------

University Library

Director	ITO, Toshiko
----------	--------------

Special Facilities for Research and Education

Director, Center for International Education and Research	KANECO, Satoshi
Director, Center for Information Technologies and Networks	MANABE, Tetsuya
Director, Center for Global Environment Education & Research	KANECO, Satoshi

Center for Physical & Mental Health

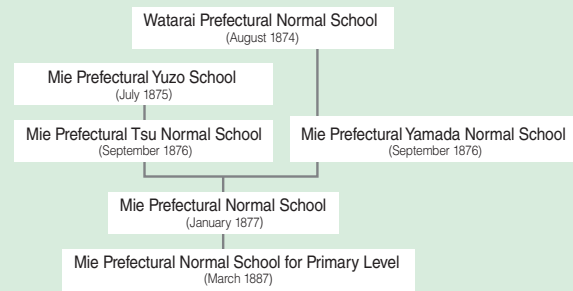
Director	KOBAYASHI, Yoshinao
----------	---------------------

Presidents

1st	OKAIDE, Yukio	May 31, 1949 - May 31, 1957
Acting	NAKANO, Seisaku	June 1, 1957 - Dec. 9, 1957
2nd	NOMURA, Takee	Dec. 10, 1957 - Dec. 9, 1966
Acting	KADOYA, Tatsujiro	Dec. 10, 1966 - Feb. 28, 1967
3rd	NODA, Tokichi	Mar. 1, 1967 - Feb. 28, 1970
Acting	IMACHI, Isamu	Mar. 1, 1970 - Mar. 16, 1970
4th	NODA, Tokichi	Mar. 17, 1970 - Nov. 8, 1971
Acting	IWAMOTO, Kiichi	Nov. 9, 1971 - June 30, 1972
Acting	SAKAKIBARA, Shingo	July 1, 1972 - Feb. 2, 1974
5th	MIKAMI, Yoshiki	Feb. 10, 1974 - Feb. 9, 1980
6th	IZAWA, Tadasu	Feb. 10, 1980 - Feb. 8, 1986
7th	TAKEDA, Susumu	Feb. 10, 1986 - Feb. 9, 1992
8th	TAKEMURA, Yasuo	Feb. 10, 1992 - Feb. 9, 1998
9th	YATANI, Ryuichi	Feb. 10, 1998 - Mar. 31, 2004
10th	TOYODA, Nagayasu	Apr. 1, 2004 - Mar. 31, 2009
11th	UCHIDA, Atsumasa	Apr. 1, 2009 - Apr. 1, 2015
12th	KOMADA, Yoshihiro	Apr. 1, 2015 - Mar. 31, 2021
13th	ITO, Masaaki	Apr. 1, 2021 -

Historical chart

1874



Sansui Kaikan, Registered as a Cultural Property in Japan

Mie Prefectural Normal School (April 1898)

Mie Prefectural Women's Normal School (April 1904)

1912

Mie Higher Agricultural and Forestry School (December 1921)

Mie Prefectural Teacher Training School for Agricultural Continuation School Teachers (February 1925)

Mie Prefectural Teacher Training School for Vocational Education (December 1927)

Mie Prefectural Teacher Training School for Youth School Teachers (April 1935)

Mie Prefectural Teacher Training School for Women's School Teachers (April 1938)

Mie Normal School (April 1943)

Mie Prefectural Medical School (December 1943)

1945

Mie Higher Agricultural and Forestry College (April 1944)

Mie Normal School for Youth School Teachers (April 1944)

Mie Prefectural Medical College (June 1947)

1949

Mie University (May 31, 1949)

National University Corporation Mie University (April 1, 2004)

May 31, 1949	Mie University
May 31, 1949	Faculty of Liberal Arts Faculty of Agriculture
May 31, 1949	University Library Faculty of Liberal Arts (Kindergarten, Elementary school, Junior High School, High school) Faculty of Agriculture (Farm Station, Forest Station)
April 1, 1951 March 31, 2009 closed	Special Course (Agriculture)
March 31, 1953 closed	Faculty of Liberal Arts (High school)
July 1, 1955 March 31, 1966 closed	Agriculture of One-year Graduate Courses, Faculty of Agriculture
April 1, 1966	Graduate Schools of Agriculture (Master Course)
April 1, 1966 renamed	Faculty of Education
April 1, 1966 March 31, 1989 closed	One-Year Graduate Course (Education)
April 1, 1969	Faculty of Engineering
May 1, 1972 transferred	Faculty of Medicine (transferred from Mie Prefectural University) Faculty of Fisheries (transferred from Mie Prefectural University)
April 1, 1973	School for the Mentally Handicapped
October 1, 1973 transferred	University Hospital (transferred from Mie Prefectural University)
April 1, 1974 March 31, 1991 closed	School of Nursing

April 1, 1975

April 1, 1976

April 18, 1977

April 1, 1978

April 1, 1979

March 31, 2003 closed

April 1, 1979 Attached Facility for Graduate School of Bioresources

April 1, 2006

April 1, 1979

April 1, 1983

May 21, 1987 reorganized

October 1, 1987

April 1, 1988

October 1, 1988

March 31, 2000 closed

April 1, 1989

April 1, 1991

April 1, 1992

April 1, 1995

April 1, 1996 reorganized

April 11, 1999 reorganized

March 31, 2015 closed

April 1, 2002

Attached Facility for Graduate School of Bioresources April 1, 2006

April 1, 2002 renamed in Japanese

April 1, 2002

April 1, 2004

May 26, 2004

April 1, 2005

April 1, 2006

April 1, 2006

April 1, 2007 renamed

April 1, 2007 renamed

March 31, 2014 closed

January 30, 2009

April 1, 2009

April 1, 2014

April 1, 2015 reorganized

December 1, 2016

April 1, 2018 renamed

February 24, 2021

April 1, 2021

April 1, 2022 reorganized

April 1, 2024 reorganized

Graduate Schools of Medicine (Doctoral Course)

Graduate Schools of Fisheries (Master Course)

Education Technology Center

Graduate Schools of Engineering (Master Course)

Institute of Laboratory Animals

Training Ship "SEISUI MARU"

One-Year Graduate Course (Special Education)

Faculty of Humanities

Center for Educational Research and Practice

Faculty of Bioresources (amalgamation of the Faculty of Agriculture and Faculty of Fisheries)

Faculty of Bioresources (Farm Station, Forest Station, Fisheries Research Laboratory, Training Ship "SEISUI MARU")

Graduate Schools of Bioresources (Master Course)

College of Medical Sciences, Mie University

Graduate Schools of Education (Master Course)

Graduate Schools of Bioresources (Doctoral Course)

Graduate Schools of Humanities and Social Sciences (Master Course)

Graduate Schools of Engineering (Doctoral Course)

Common Education Center

Integrated Center for Educational Research and Practice

Kii-Kuroshio Bio-Regional Field Science Center (Farm Station, Forest Station, Fisheries Research Laboratory)

Graduate Schools of Medicine

Course of Nursing (Master Course)

National University Corporation Mie University

Liberal Arts Center

Graduate Schools of Medicine priority strengthening

Graduate Schools of Engineering priority strengthening

Graduate Schools of Bioresources priority strengthening (Training Ship "SEISUI MARU", Kii-Kuroshio Bio-Regional Field Science Center (Farm Station, Forest Station, Fisheries Research Laboratory))

Mentally Challenged Children's School

One-Year Graduate Course (Special Supporting Education and Special Major Department)

Training Ship "SEISUI MARU" The Second

Graduate Schools of Regional Innovation Studies

College of Liberal Arts and Sciences

Center for Future Teachers and School Support

Cetacean Research Center (CRC)

College of Liberal Arts and Sciences

Kii-Kuroshio Bio-Regional Field Science Center (Fisheries Research Laboratory) (Moved from Shima City to Toba City)

Division of Advanced Practice for Professional Teachers and School Leaders

Liberal Arts Center (a part of Organization for Higher Education Design)

Cetacean Research Center (a part of Organization for Research Initiative and Promotion)



Sansui Hall

2004

2024

Faculties and Graduate Schools / Institutes for Education and Research

Faculty of Humanities, Law and Economics/ Graduate School of Humanities and Social Sciences

Through education and research of the humanities and social studies, we develop student abilities to contribute towards the development of regional culture, explore ideas of what it means to be human and theories of social structures, and take initiatives in solving social problems.



Faculty of Humanities, Law and Economics (2 Departments/6 Courses)		
	Departments	Courses
Under-graduate	Department of Humanities	Studies of Cultural Resources, Studies of Foreign Languages and Cultures, Studies of Socio-Cultural Behavior
	Department of Law and Economics	Law and Politics, Economics and Business Administration, Public Policy
Graduate School of Humanities and Social Sciences (2 Majors)		
	Majors	
Master Program	Area Studies Course	
	Social Sciences Course	

Faculty of Education/Graduate School of Education

Taking advantage of comprehensive study in the Faculty of Education, students develop expertise in the humanities, social and natural sciences, education, and the professional skills of their respective fields.



Faculty of Education (1 Department/13 Courses)		
	Department	Courses
Under-graduate	Training Course for School Teachers	Language and Literature Education, Social Studies Education,Mathematical Education,Science Education,Music Education, Fine Arts Education, Health and Physical Education,Technology/ Manufacturing Education, Home Economics Education,English Language Education, Special Support Education,Science of Early Childhood Education, School Education
Graduate School of Education (1 Major/2 Courses)		
	Major	Courses
Professional Degree Program	Advanced Practice for Professional Teachers and School Leaders	School Management Skills Development Educational Practice Development
Affiliated Facility of Faculties		
Institution	Purpose and Research	
Center for Future Teachers and School Support	We give guidance based on our support system, research, and feedback results on teacher training education and current teacher development. (Pre-service Teacher Division, School Support Division, In-service Teacher and Development Division, and General Support Office)	

Graduate School of Medicine/Faculty of Medicine

Students develop a sense of social responsibility and ethics, creative and critical cognitive skills, and strive towards an advancement of human health and welfare which translate at local and global levels of society.



Graduate School of Medicine (Doctoral Program:1Major • 2Divisions, Industry-Academic-Government Cooperation,Endowed Department) (Master Program :1Major • 2Divisions, Industry-Academic-Government Cooperation,Endowed Department) (Master Program :1Major • 3Divisions) (Doctoral Program:1Major • 3Divisions)			
	Majors	Divisions	Departments
Doctoral Program, Master Program	Medical Life Sciences (Doctoral Program)	Basic Medicine Sciences	Histology and Cell Biology, Developmental and Regenerative Medicine, Biochemistry, Stem Cell and Developmental Biology, Physiology, Pathology and Matrix Biology, Oncologic Pathology, Integrative Pharmacology, Molecular Pathobiology & Cell Adhesion Biology, Microbiology and Molecular Genetics, Immunology, Medical Zoology and Parasitology, Environmental and Molecular Medicine, Public Health, Occupational Medicine, and Applied Epidemiology, Forensic Medicine and Sciences, Medical Education, Immunoregulation, Animal Functional Genomics, Reproductive Biology
		Clinical Medicine Sciences	Cardiology and Nephrology, Hematology and Oncology, Gastroenterology and Hepatology, Pulmonary and Critical Care Medicine, Diabetes, Metabolism and Endocrinology, Neurology, Rheumatology, Family Medicine, Neuropsychiatry, Pediatrics, Dermatology, Radiology, Hepatobiliary Pancreatic and Transplant Surgery, Gastrointestinal and Pediatric Surgery, Thoracic and Cardiovascular Surgery, Breast Surgery, Obstetrics and Gynecology, Neurosurgery, Musculoskeletal Surgery and Multimodality Therapy for Cancer, Nephro-Urologic Surgery and Andrology, Ophthalmology, Otorhinolaryngology-Head and Neck Surgery, Plastic and Reconstructive Surgery, Anesthesiology, Emergency and Critical Care Medicine, Rehabilitation Medicine, Clinical Pharmaceuticals, Laboratory Medicine, Genomic Medicine and Genetic Counseling, General Medicine, General Internal Medicine, Neonatology, Child Medical Health and Development, Health Promotion and Disease Prevention, Clinical Oncogenomics, Clinical Dysmorphology, Infection Control and Infectious Disease Crisis Management
		(Industry-Academic-Government Cooperation) Clinical Human Research Promotion and Drug Development	Human Research Promotion and Drug Development
	Medicine (Master Program)	(Industry-Academic-Government Cooperation)Systems Pharmacology	Systems Pharmacology
		(Industry-Academic-Government Cooperation)Personalized Cancer Immunotherapy	Personalized Cancer Immunotherapy
		(Endowed Department) Dementia Prevention and Therapeutics	Dementia Prevention and Therapeutics
		(Endowed Department) Innovative Surgery and Surgical Techniques Development	Innovative Surgery and Surgical Techniques Development
		(Endowed Department) Orthopedics and Sports Medicine	Orthopedics and Sports Medicine
		(Endowed Department) Advanced Diagnostic Imaging	Advanced Diagnostic Imaging
		(Endowed Department) Advanced Cancer Therapy	Advanced Cancer Therapy
		(Endowed Department) Hematological Malignancies	Hematological Malignancies
		(Endowed Department) Neuroradiology	
		(Endowed Department) Advanced Treatment for Spinal Diseases	
		(Endowed Department) Public Health / Infectious Disease Control and Prevention	Public Health / Infectious Disease Control and Prevention
		(Plan for Fostering Next-Generation Cancer Specialists)	Radiation Oncology
	Majors	Divisions	Departments
Master Program	Nursing	Fundamental Nursing	Nursing Education, Nursing Administration, Fundamental of Nursing
		Clinical Nursing	Oncology Nursing, Adult Health Nursing, Maternal Nursing, Child Health Nursing, Gerontological Nursing
		Community Health Nursing	Psychiatric Nursing, Home Care Nursing, Community Health Nursing
Doctral Program	Nursing	Nursing	Nursing Education, Fundamental Practical Nursing, Adult and Elderly Health Nursing, Maternal and Child Health Nursing, Psychiatry, Stress and Health Sciences, Community Health Nursing
Faculty of Medicine (2 Schools)			
	Schools		
Under-graduate	Medicine		
	Nursing		

➤ Graduate School of Engineering/Faculty of Engineering

Students in the Graduate School and Faculty of Engineering develop a sense of social responsibility and ethics, creative and critical cognitive skills, and strive towards contributions for the harmonious coexistence of humans and nature through research on science and technology.



Graduate School of Engineering (Master Program : 5Departments/16 Chairs, Doctoral Program : 2Departments/5 Chairs)			
	Departments		Chairs
Master Program	Mechanical Engineering		Robotics and Mechatronics, Advanced Materials and Processes, Mechanics and Physics of Materials, Environmental Energetics
	Electrical and Electronic Engineering		Electrical System Engineering, Information Communication and Photonics, Quantum and Optical Nano Electronics
	Applied Chemistry Program		Physical Chemistry, Inorganic and Analytical Chemistry, Organic Chemistry, Biochemistry
	Architecture		Architecture
	Information Engineering		Computer Science, Information Network, Intelligent System, Human Informatics
Doctoral Program	Materials Sciences,Systems Engineering		Materials Property, Materials Chemistry, Electrical Information System, Design System, Recycling System Design
Faculty of Engineering(1Departments/5Courses/16 Chairs)			
	Departments	Courses	Chairs
Under-graduate	Department of Engineering	Mechanical Engineering Program	Robotics and Mechatronics, Advanced Materials and Processes, Mechanics and Physics of Materials, Environmental Energetics
		Electrical and Electronic Engineering Program	Electrical System Engineering, Information Communication and Photonics, Quantum and Optical Nano Electronics
		Applied Chemistry Program	Physical Chemistry, Inorganic and Analytical Chemistry, Organic Chemistry, Biochemistry
		Architecture Program	Architecture
		Information Engineering Program	Computer Science, Information Network, Intelligent System, Human Informatics

➤ Graduate School of Bioresources/Faculty of Bioresources

With the coexistence of nature and mankind in mind, we established studies to explore the appropriate development and the utilization of bioresources.



Graduate School of Bioresources (Master Program : 3Divisions/9 Chairs, Doctoral Program : 3 Divisions/6 Chairs)			
	Divisions		Chairs
Master Program	Major in Sustainable Resource Sciences		Agrobiology, Forest Resources and Environmental Science, International Regional Resource Science
	Major in Environmental Science and Technology		Sustainable Earth and Environmental Sciences, Environment Oriented Information and System Engineerin, Irrigation, Drainage and Reclamation Engineering
	Major in Life Sciences		Biochemistry and Biotechnology, Marine Biotechnology, Marine Biology
Doctoral Program	Major in Sustainable Resource Sciences		Sustainable Resource System Sciences, Int'l Sustainable Resource Science
	Major in Environmental Science and Technology		Atmosphere and Sustainable Earth System Science, Atmosphere and Sustainable Earth System Science
	Major in Life Sciences		Applied Biological Chemistry, Marine Biological Science
Faculty of Bioresources(1Division/4Courses/6 specializations, starting with new admissions in the 2024 academic year)			
	Division	Courses	Specializations
Under-graduate	Bioresources	Integrated Science in Bioresources	From the second year onward, students are assigned to three courses, excluding the Course of Integrated Science in Bioresources.
		Agricultural, Forest and Environmental Sciences	Agricultural Science and Economics, Forest Science, Agricultural Engineering
		Marine Bioresources	Marine Bioresources
		Life Science and Chemistry	Bioscience and Biotechnology, Marine Life Science
Affiliated Facilities of Graduate Schools			
Institution		Purpose and Research	
Kii-Kuroshio Bio-Regional Field Science Center		Provides practical education and applied research opportunities on coexistence of human life and nature in the ecosystem that ranges from the Kii Peninsula to the Kuroshio Current.	
Farm Station		Manages practical education and applied research in agricultural studies.	
Forest Station		Manages practical education and applied research in forest resources and preservation.	
Fisheries Research Laboratory		Promote DX of the ocean, introduce IT and AI in fishery production, utilize big data regarding the fishery environment, and practice education and research facilities for fishery science, marine biology, and preservation of the ocean environment.	
Graduate School of Bioresources Training Ship “SEISUI MARU” (Base for education-related joint use)		Conducts practical/experimental survey research on fishery science/biological oceanography/ocean environment.	

➤ Graduate School of Regional Innovation Studies

The Graduate School of Regional Innovation Studies was established in order to bridge the gap which exists in contemporary industrial society — and especially in local industrial circles such as those in the Mie region — between social needs and graduate school education, and to foster the development of individuals with the capabilities to help halt regional decline. The school cultivates, and sends out into regional society, research and development professionals who are skilled in project management as well as social entrepreneurs capable of generating something out of nothing in their local communities.



Graduate School of Regional Innovation Studies (Master Program : 1Division/3 Units, Doctoral Program : 1Division/1 Unit)		
	Divisions	Units
Master Program	Regional Innovation Studies	Engineering Innovation, Bioinnovation Unit, Social Innovation
Doctoral Program	Regional Innovation Studies	Regional Development

➤ Organization for Education Development & Student Service

This organization collaborates with Mie University's various divisions and departments to create and develop educational activities directed to attainment of the university's educational objectives. It also aims to construct and consolidate systems for comprehensive support of student learning, graduate employment, and living environments, pursue qualitative improvements in education and student support, and carry out essential quality assurance initiatives.

- Center for General Education
- Center for Admissions
- Recurrent Education Center
- Center for Regional Innovation Education
- Center for Student Career & Support
- Division of Education Planning
- Division of Graduate Studies
- Division of Licence & Certification

➤ Head Office for Research & Social Collaboration

This office oversees university-wide research and social collaboration activities under Mie University's management strategy. Its aim is to strengthen the university's research capabilities and promote industry-university-government partnerships through systematic management of research and social collaboration.

- Division of Research Promotion
- Division of Industry-academia-government Collaboration
- Division of Intellectual Property Governance
- Division of Research Integrity
- Office of URA

➤ Mie Regional Plan Co-creation Organization

This organization aims to foster individuals capable of putting a wealth of skills into practice in local communities and to raise the value of research outputs, as well as to support various activities that contribute to the advancement of society, in line with Mie University's goal of growing together with the region in which it is located, as a university that co-creates with local communities.

- Regional Co-creation Deployment center
- Disaster Mitigation Research Center
- Center for Education and Research on Infectious Diseases for the Future Society
- Office for Promotion of Museums and University Cooperation

➤ Organization for Research Initiative and Promotion

This organization aims to support and advance a diverse range of research activities, in line with Mie University's goal of growing together with society.

- Advanced Scinece Reaserch Promtion Center
- Innovation Center for Semiconductor and digital Future
- Cetacean Research Center (CRC)
- International Ninja Research Center
- Center for Industrial and Medical Cannabis Research
- Research Core

➤ Regional Satellite Campus Network

We aim for mutual community and university development by having the university work together with communities to uncover each community's hidden potential. The entirety of Mie Prefecture is the field for Mie University's education and research activities, and these efforts leverage each community's unique resources together with the youthful energy of students and the education and research capabilities of the university. Through collaboration and cooperation with municipal governments, educational institutions, and other bodies, Mie University has established five local satellite campuses (Hokusei Regional Satellite Campus, Matsusaka-Taki Regional Satellite Campus, Ise-Shima Regional Satellite Campus, Iga Regional Satellite Campus, and Higashi-Kishu Regional Satellite Campus) where teachers and students carry out field work and other practical educational and research activities.

➤ University Library

Serves the three core functions of supporting research, supporting study, and contributing to the regional community. Together with the adjacent Mie Environmental & Information Platform, the University Library provides a venue for acquiring, creating, and sharing knowledge.

➤ Institutes for Education and Research

●Center for International Education and Research

This center was established with the aim of developing human resources that are capable of contributing to resolving international issues and of contributing to the internationalization of Mie University and the region through international exchange projects and international education. This center carries out various initiatives, such as conclusion of academic exchange agreements with universities overseas, study abroad programs for students, foreign language training, Japanese language education to students from overseas, job-hunting support, international education to Japanese students, and support for international activities by the university's departments.

●Center for Information Technologies and Networks

This center supports education and research by managing and operating a diverse variety of equipment ranging from educational systems and servers through to the online campus network. It also provides the foundations of network security.

●Center for Global Environment Education & Research

With the aim of achieving the Environment & SDGs Policy of Mie University, this center advances environment-related education and research activities and contributes to the resolution of glocal challenges. The Center's Research Division promotes broad-based research and development ranging from local environmental problems to global-scale challenges. The Education & Human Resource Development Division conducts environmental education for leaders of the sustainable society equipped with both knowledge and the capacity to take action in relation to the environment and SDGs. The Campus Division is engaged in the operation of environmental management systems and pursuit of a zero carbon campus that contributes to the wider goal of carbon neutrality.

➤ Center for Physical & Mental Health

Provides specialized services to maintain and improve the health of students, faculty and staff members. Doctors, nurses, public health nurses and counselors (licensed psychologists) deal with mental illnesses and physiological stress, as well as physical illnesses. The Center also provides the University community with services including first aid, regular and ad hoc medical examinations, and issuance of medical certificates.

➤ Other Organizations and Institutions

● Diversity & Inclusion Promotion Office

Following the Mie University Declaration of Diversity & Inclusion in December 2022, the University formulated and released a strategy and action plan for advancing diversity and inclusion. As a result, it has established systems for developing an education, research, and working environment free from discrimination, achieving a healthy work-life balance, and reflecting the opinions of diverse stakeholders in the University's decision-making processes. This office liaises and cooperates with organizations both within and outside the University to implement a range of projects that contribute to the advancement of diversity and inclusion.

● Office for Safety, Disaster Prevention & Crisis Management

The purpose of this office is to control, maintain, and enhance the university's internal systems and to promote educational and awareness-raising activities in connection with natural disasters and other crisis events (but excluding events related to legal compliance and harassment). This includes collecting and organizing information needed for preventative measures and initial responses, as well as passing on that information to the departments carrying out the measures and providing them with support, with assistance from personnel in each department.

● Mie Environmental & Informational Platform : MEIPL

MEIPL is one of the academic commons* integrated with the University Library. This is a core facility of Mie University, which is aiming to be the most environmentally advanced university in the world, for sending out information regarding the process of building and formulating a low-carbon society. The first floor of the building is where environmental education and research takes place, and it is also has a space for community exchange; the entire second floor is dedicated to an open "Learning Commons;" and the third floor functions as "open school" style classrooms (PBL seminar rooms) with no walls on the hallway side.
* Academic commons are places where people create and share knowledge by exchanging and collaborating with a wide range of information sources, including people and materials.

● Center for Mathematical and Data Science (CeMDS)

This center aims to contribute to the development of information technologies in regional society through data science education and human resources development. This is achieved through the education and training of human resources that have abilities in mathematics and data science (DS) by supporting the use, education, and studies of information communication technology (ICT) devices, such as mandatory laptop computers.

➤ Research Core

Areas of Excellence

Centers for Research Excellence

As of June 1, 2024

No.	Name of Centers	Representatives
1	Advanced Battery Research Center	IMANISHI, Nobuyuki, Professor, Graduate School of Engineering
2	Research Center for Materials Science and Advanced Electronics Created by Singularity	MIYAKE, Hideto, Professor, Graduate School of Engineering

Priority Areas

Priority Research Centers and Units

As of June 1, 2024

No.	Name of Centers	Representatives
1	Center for Research on Inclusive Regional Structure	FUKAI, Hideki, Professor, Faculty of Humanities, Law and Economics
2	Research Center for Curriculum Development to Solve Regional Issues in Mie	MIYAOKA, Kunihide, Professor, Faculty of Education
3	Microbiome Research Center	KOBAYASHI, Tetsu, Professor, Graduate School of Medicine
4	Research Center for Development of Recombinant VLP Vaccines	NOSAKA, Tetsuya, Professor, Graduate School of Medicine
5	Optical Neurobiology Center	TKEMOTO, Kiwamu, Professor, Graduate School of Medicine
6	"Next-generation Precision Medicine" Research Center	NAKAGAWA, Hayato, Professor, Graduate School of Medicine
7	Mie University Robotics Mechatronics Research Center for Symbiosis with Humans	IKEURA, Ryojun, Professor, Graduate School of Engineering
8	Advanced Research Center for Applications of Beyond-5G/6G Wireless Communication Technology	MURATA, Hiroshi, Professor, Graduate School of Engineering
9	Research Unit for H2 Energy and Environment	KANECO, Satoshi, Professor, Graduate School of Engineering
10	Regional Decarbonization Biomass Research Center	NONAKA, Hiroshi, Professor, Graduate School of Bioresources
11	Research Center for Innovative Technologies for Next-generation Fisheries	MATSUDA, Hirokazu, Professor, Graduate School of Bioresources
12	Unit for Genomic Manipulation and Technology Development	TAKEBAYASHI, Shinichirou, Professor, Graduate School of Bioresources

Fundamental Areas

Research Center

As of June 1, 2024

No.	Name of Centers	Representatives
1	Mie University Medical Zebrafish Research Center	INOUE, Takahiro, Professor, Graduate School of Medicine
2	Mie University Onco-cardiology Research Center	IMANAKA, Kyoko, Professor, Graduate School of Medicine
3	Center of Lateral Laboratory Associations in Bioengineering	SHIMAOKA, Kaname, Professor, Graduate School of Medicine
4	Zebrafish Drug Screening Center	SHIMADA, Yasuhiro, Associate Professor, Graduate School of Medicine
5	Mie University Research Center for Cilia and Diseases	NISHIMURA, Yuuhei, Professor, Graduate School of Medicine
6	Mie University Research Center for Matrix Biology	HASEGAWA, Masahiro, Associate Professor, Graduate School of Medicine
7	Inflammatory Skin Disease Research Center	YAMANAKA, Keiichi, Professor, Graduate School of Medicine
8	Mie University Research Center for Intractable Diseases	OKAMOTO, Ryuji, Professor, University Hospital
9	Center for Congenital Heart Disease and Kawasaki Disease in Mie University	MITANI, Yoshihide, Professor, University Hospital
10	Mie University Soft Matter Chemistry Research Center	TORIKAI, Naoya, Professor, Graduate School of Engineering
11	Mie University Energy and Environment Engineering Research Center	TSUJIMOTO, Koichi, Professor, Graduate School of Engineering
12	Mie University Seaweed Biorefinery Research Center	SHIBATA, Toshiyuki, Associate Professor, Graduate School of Bioresources

➤ Date

➤ Number of Staff Members

Number of Staff Members

As of May 1, 2024

Classification Divisions	President	Trustees	Auditors	Teaching Staff				Total	Teachers at Affiliated Schools	Other Staff	Total	Grand Total
				Professors	Associate Professors	Associate Professors (Lecturers)	Assistant Professors					
President, Trustees, Auditors	1	6 (2)	2 (1)					9 (3)			0 (0)	9 (3)
Administration Bureau								0 (0)		177 (72)	177 (72)	177 (72)
Organization for Education Development & Student Service				4	5 (2)	4 (1)	2	15 (3)		2	2 (0)	17 (3)
Head Office for Research & Social Collaboration				1	1		3 (1)	5 (1)		2 (1)	2 (1)	7 (2)
Mie Regional Plan Co-creation Organization				2	1			3 (0)			0 (0)	3 (0)
Organization for Research Initiative and Promotion				3	3		7	13 (0)		4 (2)	4 (2)	17 (2)
Regional Satellite Campus Network								0 (0)		0 (0)	0 (0)	0 (0)
University Library					1 (1)			1 (1)			0 (0)	1 (1)
Center for International					1 (1)	1 (1)	1	3 (2)			0 (0)	3 (2)
Center for Information Technologies and Networks					1		2	3 (0)		3 (1)	3 (1)	6 (1)
Center for Global Environment Education & Research							1	1 (0)			0 (0)	1 (0)
Global Environment Center for Education & Research				1		1 (1)		2 (1)		3 (3)	3 (3)	5 (4)
Center for Physical & Mental Health				32 (7)	23 (7)	4 (2)	2 (1)	61 (17)		9 (5)	9 (5)	70 (22)
Faculty of Humanities, Law and Economics				4 (2)	3 (1)			7 (3)			0 (0)	7 (3)
Graduate School of Education				42 (7)	20 (7)	2 (1)	1 (1)	65 (16)		10 (4)	10 (4)	75 (20)
Faculty of Education								0 (0)	7 (6)		7 (6)	7 (6)
Kindergarten								0 (0)	26 (9)	6 (5)	32 (14)	32 (14)
Primary School								0 (0)	27 (8)		27 (8)	27 (8)
Junior High School								0 (0)	29 (13)		29 (13)	29 (13)
Mentally Challenged Children's School				41 (9)	33 (7)	12 (2)	39 (15)	125 (33)		4 (2)	4 (2)	129 (35)
Graduate School of Medicine				1 (1)		1 (1)	10 (3)	12 (5)			0 (0)	12 (5)
Faculty of Medicine				10 (1)	21 (1)	45 (7)	147 (39)	223 (48)		986 (774)	986 (774)	1,209 (822)
University Hospital				39	39 (2)	4 (1)	14 (2)	96 (5)		26 (7)	26 (7)	122 (12)
Graduate School of Engineering				41 (3)	34 (6)		16 (2)	91 (11)		10 (4)	10 (4)	101 (15)
Graduate School of Bioresources								0 (0)		19 (6)	19 (6)	19 (6)
Kii-Kuroshio Bio-Regional Field Science Center				2	1			3 (0)			0 (0)	3 (0)
Farm Station					1			1 (0)			0 (0)	1 (0)
Forest Station				1	1			2 (0)			0 (0)	2 (0)
Fisheries Research Laboratory					1		1	2 (0)		13 (1)	13 (1)	15 (1)
Training Ship "SEISUI MARU" Graduate School of Regional Innovation Studies				7 (1)	2 (1)			9 (2)		4 (1)	4 (1)	13 (3)
Grand Total	1 (0)	6 (2)	2 (1)	231 (31)	192 (36)	74 (17)	246 (64)	752 (151)	89 (36)	1,278 (888)	1,367 (924)	2,119 (1,075)

*Two of the Trustees are part-time member. *One of the auditors is a part-time member. *Does not include those on administrative leave or childcare leave.
*The numbers in parentheses represent the numbers of female. *Numbers of teachers at Attached Schools includes the number of special appointed faculty.

Endowed Chairs and Industry-Academic-Government Cooperation Departments Endowed Research Divisions

Divisions	Classification	Number of Installations	Teaching Staff (Full-time)				Total
			Professors	Associate Professors	Associate Professors (Lecturers)	Assistant Professors	
Graduate School of Medicine	Endowed Chairs	9	3 (1)	3 (1)	2 (0)	5 (2)	13 (4)
	Industry-Academic-Government Cooperation	3	2 (0)			1 (1)	3 (1)
Faculty of Medicine	Endowed Chairs	9	6 (0)				6 (0)
University Hospital	Endowed Research Divisions	5	1 (0)		1 (0)	4 (1)	6 (1)
Total			12 (1)	3 (1)	3 (0)	16 (4)	34 (6)

*The numbers in parentheses represent the numbers of female staff.

As of May 1, 2024

Admission Capacity and Number of Students * The numbers in parentheses represent the numbers of international students.

Classification Faculties / Graduate Schools		First Year				Second Year				Third Year			
		Admission Capacity	Male	Female	Total	Admission Capacity	Male	Female	Total	Admission Capacity	Male	Female	Total
Faculty of Humanities, Law and Economics	Humanities	92	20(1)	78	98(1)	92	29	69(1)	98(1)	102	40(1)	61	101(1)
	Law and Economics	153	75	81	156	153	78(1)	75	153(1)	173	87	82	169
	Total	245	95(1)	159	254(1)	245	107(1)	144(1)	251(2)	275	127(1)	143	270(1)
Faculty of Education	School Teachers Training	200	76	130	206	200	87	118	205	200	68	131	199
	Total	200	76	130	206	200	87	118	205	200	68	131	199
Faculty of Medicine	Medicine	125	92	36	128	125	84	40	124	125	74	50	124
	Nursing	80	2	78	80	80	8	73	81	90	1	79	80
	Total	205	94	114	208	205	92	113	205	215	75	129	204
Faculty of Engineering	Mechanical Engineering												
	Electrical and Electronic Engineering												
	Chemistry for Materials												
	Architecture												
	Information Engineering												
	Physics Engineering												
	Department of Engineering	400	352(3)	59	411(3)	400	346(1)	64(1)	410(2)	430	376(6)	54(1)	430(7)
	Total	400	352(3)	59	411(3)	400	346(1)	64(1)	410(2)	430	376(6)	54(1)	430(7)
Faculty of Bioresources	Sustainable Resource Sciences					70	36(1)	39	75(1)	73	39	36	75
	Environmental Science and Engineering					70	43	27	70	73	47	25	72
	Life Science and Chemistry					80	40	43	83	82	30	52	82
	Marine Bioresources					40	27	16	43	42	29	12	41
	Bioresources	260	147	127	274								
	Total	260	147	127	274	260	146(1)	125	271(1)	270	145	125	270
Grand Total		1,310	764(4)	589	1,353(4)	1,310	778(3)	564(2)	1,342(5)	1,390	791(7)	582(1)	1,373(8)

Graduate Schools	Humanities and Social Sciences		15	6(2)	4(3)	10(5)	15	13(7)	6(1)	19(8)			
	Education		25	18	4	22	25	11	9	20			
	Medicine	Master (Medicine)	12	1	5	6	12	4	2	6			
		Master (Nursing)	11	3	3	6	11	3	10	13			
		Doctoral (Nursing)	3		2	2	3	1	1	2	3	12(1)	12(1)
		Doctoral (Medical Life Science)	45	26(3)	9(2)	35(5)	45	27(2)	11(2)	38(4)	45	37(2)	45(3)
	Engineering	Master	216	192(2)	36(1)	228(3)	216	218(2)	32(3)	250(5)			
		Doctoral	16	11(4)	2(2)	13(6)	16	10(4)	4(4)	14(8)	16	17(7)	5(5) 22(12)
	Bioresources	Master	88	68(2)	40(3)	108(5)	88	71(8)	46(4)	117(12)			
		Doctoral	12	5(4)	9(2)	14(6)	12	9(4)	6(4)	15(8)	12	14(8)	3 17(8)
	Regional Innovation Studies	Master	15	5	10(2)	15(2)	15	15	6(2)	21(2)			
		Doctoral	6	2		2	6	2	5(1)	7(1)	6	19(2)	4(1) 23(3)
	Total		464	337(17)	124(15)	461(32)	464	384(27)	138(21)	522(48)	82	87(19)	32(8) 119(27)

Fourth Year				Fifth Year				Sixth Year				Faculty Total			
Admission Capacity	Male	Female	Total	Admission Capacity	Male	Female	Total	Admission Capacity	Male	Female	Total	Admission Capacity	Male	Female	Total
102	41(3)	74(2)	115(5)									388	130(5)	32%	282(3) 68%
173	109(1)	95	204(1)									652	349(2)	51%	333 49% 682(2)
275	150(4)	169(2)	319(6)									1,040	479(7)	44%	615(3) 56% 1,094(10)
200	81	137	218									800	312	38%	516 62% 828
200	81	137	218									800	312	38%	516 62% 828
125	77	55	132	125	83	42	125	125	77	46	123	750	487	64%	269 36% 756
90	2	76	78									340	13	4%	306 96% 319
215	79	131	210	125	83	42	125	125	77	46	123	1,090	500	47%	575 53% 1,075
	2		2										2	100%	
	4		4										4	100%	
	2		2										2	100%	
	2(1)		2(1)										2(1)	100%	
	3		3										3	100%	
	3(1)		3(1)										3(1)	100%	
430	458(7)	63(1)	521(8)									1,660	1,532(17)	86%	240(3) 14% 1,772(20)
430	474(9)	63(1)	537(10)									1,660	1,548(19)	87%	240(3) 13% 1,788(22)
73	51	37	88									216	126(1)	53%	112 47% 238(1)
73	65	21	86									216	155	68%	73 32% 228
82	39	54(1)	93(1)									244	109	42%	149(1) 58% 258(1)
42	30	15	45									124	86	67%	43 33% 129
												260	147	54%	127 46% 274
270	185	127(1)	312(1)									1,060	623(1)	55%	504(1) 45% 1,127(2)
1,390	969(13)	627(4)	1,596(17)	125	83	42	125	125	77	46	123	5,650	3,462(27)	59%	2,450(7) 41% 5,912(34)

												30	19(9)	66%	10(4) 34%	29(13)
												50	29	69%	13 31%	42
												24	5	42%	7 58%	12
												22	6	32%	13 68%	19
												9	1	6%	15(1) 94%	16(1)
45	40(1)	22(3)	62(4)									180	130(8)	72%	50(8) 28%	180(16)
												432	410(4)	86%	68(4) 14%	478(8)
												48	38(15)	78%	11(11) 22%	49(26)
												176	139(10)	62%	86(7) 38%	225(17)
												36	28(16)	61%	18(6) 39%	46(22)
												30	20	56%	16(4) 44%	36(4)
												18	23(2)	72%	9(2) 28%	32(4)
45	40(1)	22(3)	62(4)									1,055	848(64)	73%	316(47) 27%	1,164(111)

Schools Affiliated with Faculty of Education As of May 1, 2024

Classification Category		Prescribed Number	Number of Classes	Enrollment						
				First Year	Second Year	Third Year	Fourth Year	Fifth Year	Sixth Yea	Total
Kindergarten		90	4	(3-year-old) 20	(4-year-old) 22	(5-year-old) 23	—	—	—	65
Primary School		630	18	72	91	101	99	96	97	556
Junior High School		432	12	144	142	142	—	—	—	428
Mentally Challenged Children's School	Primary School	18	3	3	3	3	3	3	3	18
	Junior High School	18	3	6	3	5	—	—	—	14
	Senior High School	24	3	8	5	7	—	—	—	20
Total		1,212	43	253	266	281	102	99	100	1,101

Number of Scholarship Grantees As of March 2024

Classification Faculties / Graduate Schools		Enrollment	Japan Student Services Organization				Private Scholarship Fund Local & Regional Bodies	Grand Total	Ratio of Scholarship Grantees to Total Number of Students	
			Benefits	First-Class Loan (Interest-free)	Second-Class Loan (Interest-bearing)	Total				
Faculties	Humanities, Law and Economics	1,101	107	144	112	363	3	366	33.2%	
	Education	823	77	120	81	278	13	291	35.4%	
	Medicine	1,084	71	94	106	271	330	601	55.4%	
	Engineering	1,759	150	224	177	551	16	567	32.2%	
	Bioresources	1,117	96	144	110	350	10	360	32.2%	
Graduate Schools	Humanities and Social Sciences (Master)		30		1	0	1	0	1	3.3%
	Education (Master)	Master	2		0	0	0	0	0	0.0%
		Doctoral	40		5	1	6	1	7	17.5%
	Medicine	Master(Medicine)	14		0	0	0	0	0	0.0%
		Master(Nursing)	25		1	0	1	1	2	8.0%
		Doctoral(Nursing)	19		1	1	2	1	3	15.8%
		Doctoral	203		1	1	2	0	2	1.0%
	Engineering (Doctoral Course)	Master	493		159	7	166	3	169	34.3%
		Doctoral	49		4	0	4	0	4	8.2%
	Bioresources (Doctoral Course)	Master	219		61	5	66	7	73	33.3%
		Doctoral	45		0	1	1	0	1	2.2%
	Regional Innovation Studies	Master	42		7	0	7	0	7	16.7%
		Doctoral	36		2	0	2	0	2	5.6%
Total		7,101	501	968	602	2,071	385	2,456	34.6%	

*The numbers of students indicated above are as of May 1, 2023. *The totals are cumulative numbers.

Numbers of 2024 Applicants and Entrants / Applicants and Entrants by Prefectures (Undergraduate) / Number of 2023 Graduates and Number of Degrees Conferred

Numbers of 2024 Applicants and Entrants

As of April 1, 2024

Classification Faculties / Graduate Schools		Admission Capacity	Applicants			Examinees			Successful Candidates			Entrants			
			Male	Female	Total	Male	Female	Total	Male	Female	Total	Male	Female	Total	
Faculties	Humanities, Law and Economics		245	(15) 562	(9) 751	(24) 1,313	(11) 373	(7) 442	(18) 815	(1) 109	(2) 173	(3) 282	(1) 95	(0) 159	(1) 254
	Education		200	344	460	804	269	346	615	79	132	211	76	130	206
	Medicine		205	633	706	1,339	310	350	660	91	120	211	91	114	205
	Engineering		400	(17) 1,392	(0) 295	(17) 1,687	(15) 1,050	(0) 218	(15) 1,268	(6) 384	(0) 66	(6) 450	(4) 352	(0) 59	(4) 411
	Bioresources		260	(0) 425	(0) 416	(0) 841	(0) 304	(0) 285	(0) 589	(0) 160	(0) 140	(0) 300	(0) 148	(0) 127	(0) 275
	Grand Total		1,310	(32) 3,356	(9) 2,628	(41) 5,984	(26) 2,306	(7) 1,641	(33) 3,947	(7) 823	(2) 631	(9) 1,454	(5) 762	(0) 589	(5) 1,351
Graduate Schools	Humanities and Social Sciences (Master Course)		15	(4) 8	(6) 12	(10) 20	(4) 8	(6) 11	(10) 19	(2) 6	(3) 5	(5) 11	(2) 6	(3) 4	(5) 10
	Education (Master Course)		25	19	5	24	19	5	24	19	5	24	18	4	22
	Medicine	Master	12	(1) 3	(0) 4	(1) 7	(1) 3	(0) 4	(1) 7	(1) 2	(0) 4	(1) 6	(0) 1	(0) 4	(0) 5
		Master (Nursing)	11	(0) 3	(0) 5	(0) 8	(0) 3	(0) 5	(0) 8	(0) 3	(0) 3	(0) 6	(0) 3	(0) 3	(0) 6
		Doctoral (Nursing)	3	(0) 0	(0) 2	(0) 2	(0) 0	(0) 2	(0) 2	(0) 0	(0) 2	(0) 2	(0) 0	(0) 2	(0) 2
		Doctoral	45	(0) 18	(1) 6	(1) 24	(0) 18	(1) 6	(1) 24	(0) 18	(1) 6	(1) 24	(0) 18	(1) 6	(1) 24
	Engineering	Master	216	(5) 220	(1) 40	(6) 260	(5) 215	(1) 40	(6) 255	(2) 201	(1) 39	(3) 240	(2) 192	(1) 36	(3) 228
		Doctoral	16	(0) 6	(1) 1	(1) 7	(0) 6	(1) 1	(1) 7	(0) 6	(1) 1	(1) 7	(0) 6	(1) 1	(1) 7
	Bioresources	Master	88	(1) 79	(3) 43	(4) 122	(1) 78	(3) 41	(4) 119	(1) 70	(3) 41	(4) 111	(1) 66	(3) 39	(4) 105
		Doctoral	12	(0) 2	(0) 6	(0) 8	(0) 2	(0) 6	(0) 8	(0) 2	(0) 6	(0) 8	(0) 2	(0) 6	(0) 8
	Regional Innovation Studies	Master	15	(0) 8	(1) 11	(1) 19	(0) 8	(1) 10	(1) 18	(0) 5	(0) 8	(0) 13	(0) 5	(0) 8	(0) 13
		Doctoral	6	(0) 4	(0) 0	(0) 4	(0) 4	(0) 0	(0) 4	(0) 3	(0) 0	(0) 3	(0) 2	(0) 0	(0) 2
Grand Total		464	(11) 370	(13) 135	(24) 505	(11) 364	(13) 131	(24) 495	(6) 335	(9) 120	(15) 455	(5) 319	(9) 113	(14) 432	

The numbers in parentheses represent the number of self-financed international students.

Applicants and Entrants by Prefectures (Undergraduate)

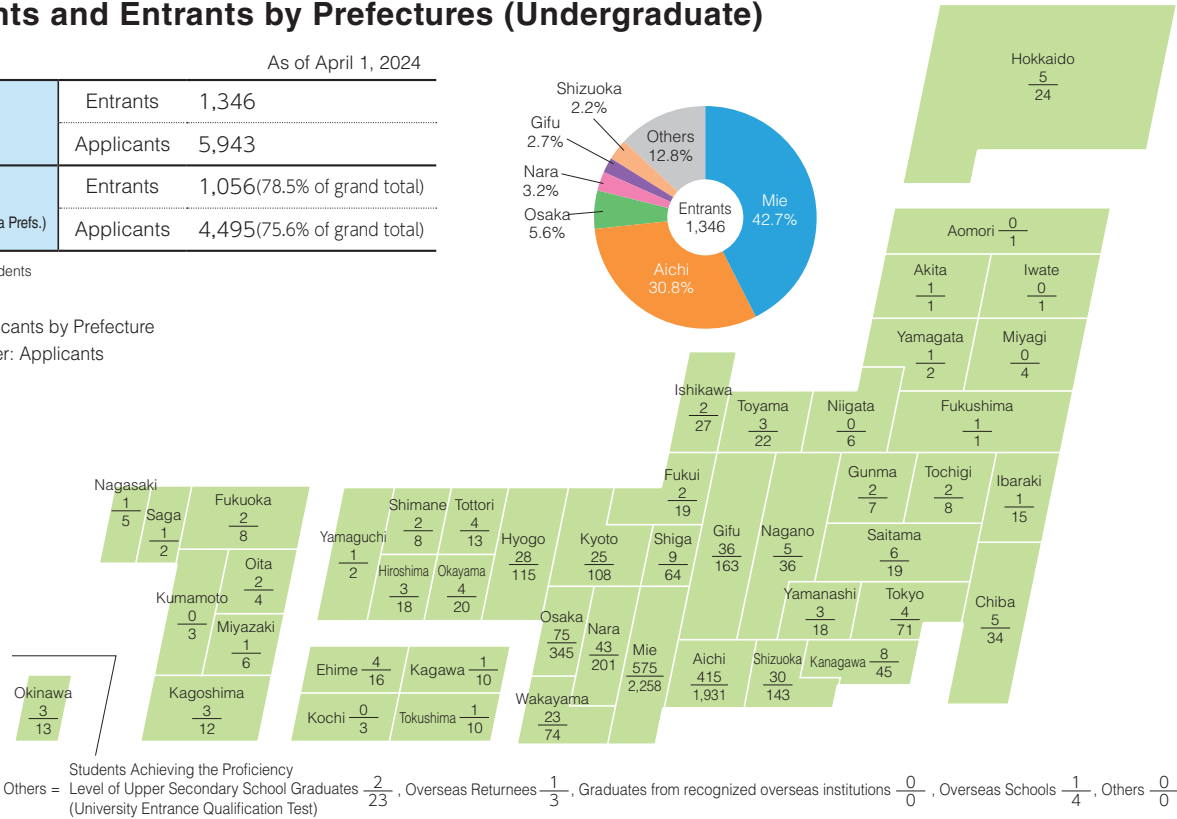
As of April 1, 2024

Grand Total	Entrants	1,346
	Applicants	5,943
Tokai District (Mie, Aichi, Gifu and Shizuoka Prefs.)	Entrants	1,056(78.5% of grand total)
	Applicants	4,495(75.6% of grand total)

* Excluding international students

Map: Entrants vs. Applicants by Prefecture

Upper: Entrants Lower: Applicants



Students Achieving the Proficiency Level of Upper Secondary School Graduates $\frac{2}{23}$, Overseas Returnees $\frac{1}{3}$, Graduates from recognized overseas institutions $\frac{0}{0}$, Overseas Schools $\frac{1}{4}$, Others $\frac{0}{0}$ (University Entrance Qualification Test)

Number of 2023 Graduates and Number of Degrees Conferred

Faculties

Faculties	Departments and Courses	Graduates	
		2023 Academic Year	Cumulative Total
Humanities, Law and Economics	Humanities	(66) 102	(5,846) 10,894
	Law and Economics	(71) 170	
	Subtotal	(137) 272	
Education	School Teachers Training	(128) 194	(11,118) 20,070
	Subtotal	(128) 194	
Medicine	Medicine	(36) 133	(3,005) 7,031
	Nursing	(73) 78	
	Subtotal	(109) 211	
Engineering	Department of Engineering	(61) 377	(1,661) 17,672
	Mechanical Engineering	(0) 3	
	Electrical and Electronic Engineering	(0) 5	
	Chemistry for Materials	(1) 3	
	Architecture	(0) 1	
	Information Engineering	(0) 2	
	Physics Engineering	(0) 2	
	Subtotal	(62) 393	
	Sustainable Resource Sciences	(32) 67	(3,518) 8,905
	Environmental Science and Technology	(26) 72	
Bioresources	Department of Life Science and Chemistry	(46) 81	
	Marine Bioresources	(10) 39	
	Subtotal	(114) 259	
(Previous) Agriculture		—	(222) 6,978
(Previous) Fisheries		—	(56) 944
Total (1)		(550) 1,329	(25,426) 72,494

* The numbers in parentheses represent the numbers of females.

One-Year Graduate Courses and Special Course

Divisions	Graduates	
	Cumulative Total	
One-Year Graduate Courses	Special Needs Education	(53) 74
	(Previous) Special Education	(197) 352
	(Previous) Agriculture	(19) 78
Special Course	Agriculture	(18) 609
Total (3)		(287) 1,113
Grand Total (1) + (2) + (3)		(28,694) 88,627

* The numbers in parentheses represent the numbers of females.

College of Medical Sciences

Department	Graduates	
	Cumulative Total	
Nursing	(704) 715	

* The numbers in parentheses represent the numbers of females.

Graduate Schools

Graduate Schools	Courses	Graduates	
		2023 Academic Year	Cumulative Total
Humanities and Social Sciences	Master Course	(4) 9	(246) 473
Education	Master Course	(1) 2	(523) 1,130
	Professional Degree Program	(7) 20	(33) 97
Medicine	Master Course	(2) 8	(271) 435
	Master Program	(9) 10	(48) 54
	Doctoral Course	(16) 43	(262) 1,486
	Doctoral Program	(3) 4	(9) 10
Engineering	Master Program	(21) 229	(520) 5,734
	Doctoral Program	(1) 10	(46) 372
Bioresources	Master Program	(32) 90	(824) 2,866
	Doctoral Program	(2) 8	(94) 357
Regional Innovation Studies	Master Program	(6) 21	(46) 163
	Doctoral Program	(1) 6	(9) 42
Engineering	Master Course	—	(31) 1,164
Bioresources	Master Course	—	(6) 152
(Previous) Agriculture	Master Course	—	(12) 378
(Previous) Fisheries	Master Course	—	(1) 107
Total (2)		(105) 460	(2,981) 15,020

* The numbers in parentheses represent the numbers of females.

Number of Degrees Conferred

Master Degree			Doctoral Degree		
Special Fields	2023 Academic Year	Cumulative Total	Special Fields	2023 Academic Year	Cumulative Total
Humanities	(3) 6	(142) 243	Medical Science	By Completing the Course	(16) 43
Social Science	(1) 3	(104) 230		By Submitting Thesis	(1) 8
Education	(1) 2	(523) 1,130	Nursing	By Completing the Course	(3) 4
Master of Education	(7) 20	(33) 97	Engineering	By Completing the Course	(1) 10
Medicine	(2) 8	(118) 272		By Submitting Thesis	(0) 1
Nursing	(9) 10	(201) 217	Philosophy	By Completing the Course	(3) 14
Engineering	(21) 229	(551) 6,898		By Submitting Thesis	(2) 3
Bioresources	(32) 90	(830) 3,018	Total		
Academic	(6) 21	(46) 163			
(Previous) Agriculture	—	(12) 378			
(Previous) Fisheries	—	(1) 107			
Total	(82) 389	(2,561) 12,753			

* The numbers in parentheses represent the numbers of females.

* The cumulative total of degrees conferred is the total graduates in the previous master course of the Engineering which is 1,164 (31) and the current master program of the Engineering.

* The cumulative total of degrees conferred is the total graduates in the previous master course of the Bioresources which is 152 (6) and the current master program of the Bioresources.

* The cumulative total of degrees conferred is the total graduates in the previous master course of the Nursing which is 163 (153) and the current master program of the Medicine.

Career Paths of 2023 Graduates

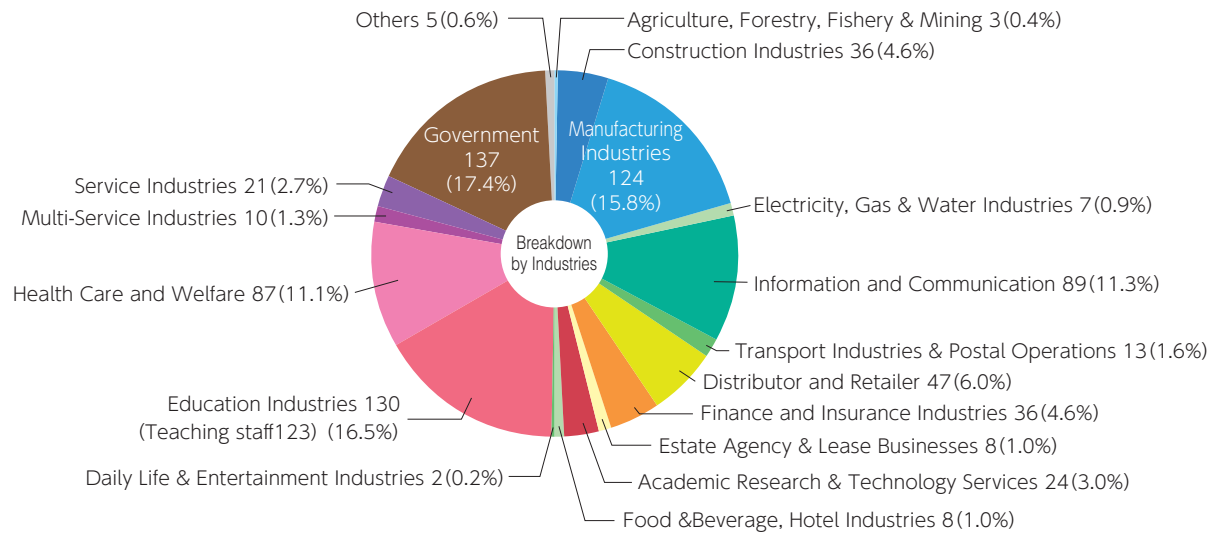
*The numbers in parentheses represent the numbers of females.

Classification		Number of Graduates	Graduates													
			Entrants of Higher Grade Schools	Residents	Others	Employed	Agriculture, Forestry, Fishery & Mining	Construction Industries	Manufacturing Industries	Electricity, Gas & Water Industries	Information and Communications	Transport Industries & Postal Operations	Distributor and Retailer	Finance and Insurance Industries		
Faculties / Graduate Schools																
Faculties	Humanities, Law and Economics	Humanities	102 (66)	4 (3)		7 (4)	91 (59)		1 (1)	9 (8)	1 (1)	18 (10)	3 (3)	14 (9)	9 (5)	
		Low and Economics	170 (71)	10 (5)		12 (3)	148 (63)		3 (2)	23 (10)	2 (1)	19 (5)	5 (1)	9 (3)	19 (7)	
		Total	272 (137)	14 (8)		19 (7)	239 (122)		4 (3)	32 (18)	3 (2)	37 (15)	8 (4)	23 (12)	28 (12)	
	Education	School Teachers Training	194 (128)	11 (1)		8 (5)	175 (122)		1 (1)	3 (2)		10 (4)	1 (1)	4 (2)	4 (4)	
		Total	194 (128)	11 (1)		8 (5)	175 (122)		1 (1)	3 (2)		10 (4)	1 (1)	4 (2)	4 (4)	
	Medicine	School of Medicine	133 (36)		127 (35)	6 (1)										
		School of Nursing	78 (73)			1	77 (73)									
		Total	211 (109)		127 (35)	7 (1)	77 (73)									
	Engineering	Mechanical Engineering	3				3			1				1		
		Electrical and Electronic Engineering	5	1			4			3		1				
		Chemistry for Materials	3 (1)				3 (1)			2						
		Architecture	1				1				1					
		Information Engineering	2				2									
		Physics Engineering	2			1	1					1				
		Department of Engineering	Mechanical Engineering Program	91 (9)	63 (5)		1	27 (4)			14 (1)		5 (1)		1	
			Electrical and Electronic Engineering Program	94 (4)	54 (3)		2	38 (1)		4 (1)	17	1	8		1	
			Applied Chemistry Program	91 (32)	70 (26)		1	20 (6)			10 (5)		2			
			Architecture Program	48 (12)	25 (5)		1	22 (7)		19 (5)		1 (1)				
			Information Engineering Program	53 (4)	25			28 (4)			6 (2)		16 (2)			1
			Total	393 (62)	238 (39)		6	149 (23)		23 (6)	53 (8)	3 (1)	33 (3)		3	1
		Bioresources	Sustainable Resource Sciences	67 (32)	20 (5)		3 (2)	44 (25)	3 (3)	2	10 (8)		3 (1)	2 (1)	7 (3)	1 (1)
	Environmental Science and Technology		72 (26)	22 (5)		3	47 (21)		5 (4)	8 (4)	1	4 (2)	2 (1)	2 (2)		
	Department of Life Science and Chemistry		81 (46)	39 (23)		2	40 (23)			15 (11)		2		5 (3)	2 (1)	
	Marine Bioresources		39 (10)	23 (3)			16 (7)		1	3 (2)				3 (3)		
	Total		259 (114)	104 (36)		8 (2)	147 (76)	3 (3)	8 (4)	36 (25)	1	9 (3)	4 (2)	17 (11)	3 (2)	
	Grand Total		1,329 (550)	367 (84)	127 (35)	48 (15)	787 (416)	3 (3)	36 (14)	124 (53)	7 (3)	89 (25)	13 (7)	47 (25)	36 (18)	
	Graduate Schools	Humanities and Social Sciences (Master Course)	Area Studies (Master)	6 (3)	2			3 (2)					1			
			Social Sciences (Master)	3 (1)			1	1 (1)								
			Total	9 (4)	2		1	4 (3)					1			
		Education (Master Course)	Educational Science (Master)	2 (1)			2 (1)									
Division of Advanced Practice for Professional Teachers and School Leaders (Professional Degree Program)			20 (7)	1		1 (1)	18 (6)									
Total			22 (8)	1		3 (2)	18 (6)									
Medicine (Doctoral Course)		Medicine (Master)	8 (2)	1			7 (2)			1						
		Nursing(Doctoral)	10 (9)	1 (1)			9 (8)									
		Nursing(Doctoral)	4 (3)				4 (3)									
		Medical Life Science(Doctoral)	56 (17)				56 (17)									
Engineering (Doctoral Program)		Total	78 (31)	2 (1)			76 (30)			1						
		Mechanical Engineering	53	1			52			46	3	1				
		Mechanical and Electronic Engineering	52 (1)				52 (1)			35 (1)	1	13		1		
		Chemistry for Materials	68 (15)	3		2 (1)	63 (14)			56 (13)	1	2 (1)		1		
		Architecture	15 (3)			2 (1)	13 (2)		6 (2)	1	1					
		Information Engineering	25				25			10		12	1	1		
		Physics Engineering	16 (2)			1	15 (2)			8	1	4 (1)				
		Total (Master Program)	229 (21)	4		5 (2)	220 (19)		6 (2)	156 (14)	7	32 (2)	1	3		
		Materials Science	4 (1)				4 (1)			1						
		System Engineering	9			1	8			1						
Total (Doctor Program)		13 (1)			1	12 (1)			2							
Bioresources (Doctoral Program)		Sustainable Resource Sciences	19 (7)	2 (1)		1 (1)	16 (5)			6		2 (1)		2 (1)		
		Environmental Science and Technology	22 (4)	3 (1)		1 (1)	18 (2)		1	7	2	3 (2)	1	1		
		Life Sciences	49 (21)	2 (1)		1 (1)	46 (19)	2		26 (11)	1	3 (1)				
		Total (Master Program)	90 (32)	7 (3)		3 (3)	80 (26)	2	1	39 (11)	3	8 (4)	1	3 (1)		
		Sustainable Resource Sciences	4 (3)			3 (3)	1									
		Environmental Science and Technology	3 (1)				3 (1)			2						
		Life Sciences	6 (1)			1 (1)	5									
		Total (Doctor Program)	13 (5)			4 (4)	9 (1)			2						
Regional Innovation Studies		Regional Innovation Studies (Master Program)	21 (6)	1		2 (1)	18 (5)			12 (4)		1		2 (1)		
	Total	21 (6)	1		2 (1)	18 (5)			12 (4)		1		2 (1)			
	Regional Innovation Studies (Doctor Program)	6 (2)			1 (1)	5 (1)		1	1							
	Total	6 (2)			1 (1)	5 (1)		1	1							
Grand Total		481 (110)	17 (4)		20 (13)	442 (92)	2	8 (2)	213 (29)	10	42 (6)	2	8 (2)			

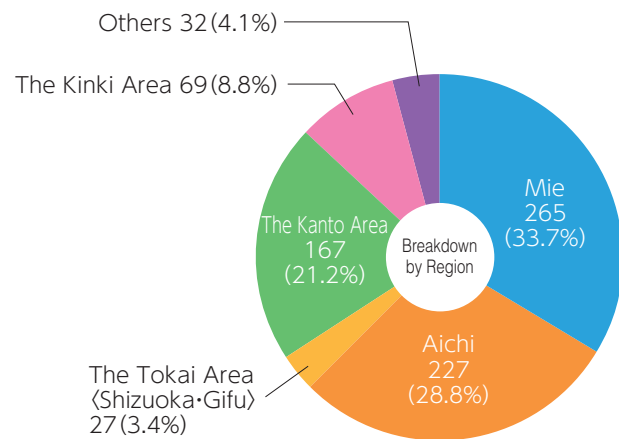
*Those who finished "Doctoral Course" or "Doctoral Program" include those who have completed course work, but not submitted a thesis yet.
* "Employed" includes those employed fewer than 30 hours per week for a term of at least one year (shortened work hours), and those employed fulltime for terms of between one month and one year. As of May 1, 2024

											Region					
Estate Agency & Lease Businesses	Academic Research & Technology Services	Food & Beverage, Hotel Industries	Daily Life & Entertainment Industries	Education Industries		Health Care and Welfare	Multi-Service Industries	Service Industries	Government	Others	Mie Prefecture	Aichi Prefecture	The Tokai Area (Shizuoka/Gifu)	The Kanto Area	The Kinki Area	Others
					Number of Faculty											
4 (2)	1	2 (2)	2 (1)	4	4	4 (4)	1 (1)	2 (2)	16 (10)		16 (10)	35 (23)	4 (3)	23 (12)	8 (6)	5 (5)
2 (2)	9 (7)	1					6 (2)	4 (2)	46 (21)		39 (16)	51 (18)	3 (1)	39 (20)	11 (5)	5 (3)
6 (4)	10 (7)	3 (2)	2 (1)	4	4	4 (4)	7 (3)	6 (4)	62 (31)		55 (26)	86 (41)	7 (4)	62 (32)	19 (11)	10 (8)
2 (1)	4 (4)	1		117 (80)	113 (77)	9 (9)		1	17 (13)	1 (1)	107 (82)	38 (20)	5 (3)	14 (9)	7 (4)	4 (4)
2 (1)	4 (4)	1		117 (80)	113 (77)	9 (9)		1	17 (13)	1 (1)	107 (82)	38 (20)	5 (3)	14 (9)	7 (4)	4 (4)
						73 (69)			4 (4)		46 (44)	21 (20)		1 (1)	7 (7)	2 (1)
						73 (69)			4 (4)		46 (44)	21 (20)		1 (1)	7 (7)	2 (1)
									1			2				1
												2		2		
	1 (1)											2 (1)			1	
													1			
								1	1		1			1		
														1		
				1	1		1 (1)		2 (1)	3	8 (2)	5 (1)	1	8 (1)	2	3
	2			1	1			4			7	17 (1)	2	5	5	2
	1					1		2 (1)	4		9 (4)	4 (1)		6 (1)	1	
									2 (1)		1 (1)	4 (2)	2 (2)	9 (1)	6 (1)	
								3	1	1	3 (1)	11	1	10 (3)	1	2
	4 (1)			2	2	1	1 (1)	10 (1)	11 (2)	4	29 (8)	47 (6)	7 (2)	42 (6)	16 (1)	8
				1	1			2 (2)	13 (6)		9 (3)	8 (4)	2 (1)	15 (11)	6 (2)	4 (4)
	3 (1)						1	2 (1)	19 (6)		6 (3)	15 (5)	2 (1)	13 (7)	9 (5)	2
		2 (1)		4	2		1		9 (7)		12 (8)	8 (7)	2	12 (5)	5 (3)	1
	3 (1)	2 (1)		2	1				2		1	4 (2)	2 (1)	8 (3)		1 (1)
	6 (2)	4 (2)		7	4		2	4 (3)	43 (19)		28 (14)	35 (18)	8 (3)	48 (26)	20 (10)	8 (5)
8 (5)	24 (14)	8 (4)	2 (1)	130 (80)	123 (77)	87 (82)	10 (4)	21 (8)	137 (69)	5 (1)	265 (174)	227 (105)	27 (12)	167 (74)	69 (33)	32 (18)
	1 (1)								1 (1)		1 (1)	2 (1)		1 (1)		
	1 (1)										2 (1)					
	2 (2)								1 (1)		3 (2)	2 (1)		1 (1)		
				17 (6)	17 (6)			1			16 (5)				1 (1)	1
				17 (6)	17 (6)			1			16 (5)				1 (1)	1
						5 (2)		1			3 (1)	2 (1)		1		1
				1 (1)	1 (1)	7 (6)			1 (1)		8 (7)					1 (1)
				2 (1)	2 (1)	2 (2)					1 (1)	2 (2)			1	
	1			5 (2)	5 (2)	50 (15)					48 (14)			2 (1)		6 (2)
	1			8 (4)	8 (4)	64 (25)		1	1 (1)		60 (23)	4 (3)		3 (1)	1	8 (3)
	2										3	23	1	17	7	1
						1		1			3	22 (1)		21	5	1
	1							2			6 (2)	31 (5)	1	18 (5)	6 (2)	1
	5										3	2		6 (2)	2	
								1				10	1	11	2	1
	1							1 (1)				7 (2)	1	6	1	
	9					1		5 (1)			15 (2)	95 (8)	4	79 (7)	23 (2)	4
	2 (1)									1	1			2 (1)		1
				5	3			1		1	3	1		1		3
	2 (1)			5	3			1		2	4	1		3 (1)		4
				2 (1)	2 (1)		1 (1)		3 (1)		2 (1)	3 (2)	1	4 (1)	4 (1)	2
	3											9	1	4 (2)	2	2
	6 (4)			1 (1)	1 (1)			5	2 (2)		13 (4)	6 (5)	1	14 (4)	3 (2)	9 (4)
	9 (4)			3 (2)	3 (2)		1 (1)	5	5 (3)		15 (5)	18 (7)	3	22 (7)	9 (3)	13 (4)
				1	1						1					
				1 (1)							1 (1)			1	1	
			1	3	2			1			2			1	1	1
			1	5 (1)	3			1			4 (1)			2	2	1
								1	2		5 (2)	5		6 (1)	1 (1)	1 (1)
								1	2		5 (2)	5		6 (1)	1 (1)	1 (1)
				1	1				1 (1)	1	1	2 (1)		1		1
				1	1				1 (1)	1	1	2 (1)		1		1
	23 (7)		1	39 (13)	35 (12)	65 (25)	1 (1)	15 (1)	10 (6)	3	123 (40)	127 (20)	7	117 (18)	37 (7)	33 (8)

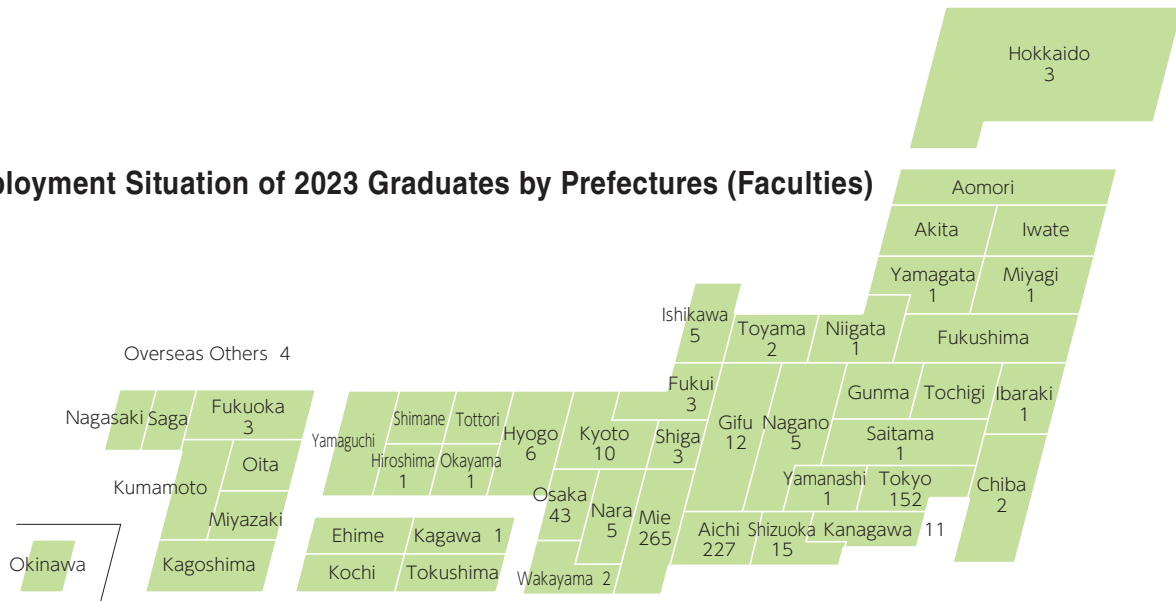
▶ Employment Situation of 2023 Graduates by Industries (Faculties)



▶ Employment Situation of 2023 Graduates by Region (Faculties)



▶ Employment Situation of 2023 Graduates by Prefectures (Faculties)



Employment Situation of 2023 Graduates by Industries (Faculties) / Employment Situation of 2023 Graduates by Region (Faculties) / Employment Situation of 2023 Graduates by Prefectures (Faculties) / Number of International Students / International Exchange Projects of 2023 (Grant Recipients)

▶ Number of International Students

Faculties / Graduate Schools

* The numbers in parentheses represent the numbers of females.

As of May 1, 2024

Faculties / Graduate Schools	Undergraduate		Master Course		Doctoral Course		Total
	Degree Students	Non-Degree Students	Degree Students	Non-Degree Students	Degree Students	Non-Degree Students	
Faculty of Humanities, Law and Economics / Humanities and Social Sciences	10 (3)	38 (24)	13 (4)	8 (7)			69 (38)
Faculty of Education / Education	0 (0)	5 (3)	0 (0)	0 (0)			5 (3)
Faculty of Medicine / Medicine	0 (0)	0 (0)	0 (0)	0 (0)	17 (9)	4 (3)	21 (12)
Faculty of Engineering / Engineering	22 (3)	10 (4)	8 (4)	2 (1)	26 (11)	0 (0)	68 (23)
Faculty of Bioresources / Bioresources	2 (1)	3 (2)	17 (7)	6 (3)	22 (6)	1 (1)	51 (20)
Graduate School of Regional Innovation Studies			4 (4)	0 (0)	4 (2)	0 (0)	8 (6)
Center for International Education and Research		19 (15)		0 (0)		0 (0)	19 (15)
Total	34 (7)	75 (48)	42 (19)	16 (11)	69 (28)	5 (4)	241 (117)

Nationalities

* The numbers in parentheses represent the numbers of females.

As of May 1, 2024

Countries & Regions		Undergraduate		Graduate		Center for International Education and Research	Total
		Degree Students	Non-Degree Students	Degree Students	Non-Degree Students	Non-Degree Students	
Asia	China	9 (3)	28 (14)	50 (22)	12 (10)	5 (5)	104 (54)
	Korea	13 (4)	4 (4)	1 (1)	1 (1)	2 (1)	21 (11)
	Indonesia			15 (4)		1 (0)	16 (4)
	Vietnam	8 (0)		2 (1)		6 (6)	16 (7)
	Malaysia	2 (0)	5 (3)	6 (5)			13 (8)
	Taiwan		5 (2)		1 (1)	2 (1)	8 (4)
	Bangladesh			5 (2)	2 (1)		7 (3)
	Thailand			4 (3)	1 (1)	1 (1)	6 (5)
	Philippines			5 (3)			5 (3)
	Cambodia	2 (0)		1 (1)			3 (1)
	Myanmar			1 (1)			1 (1)
	Sri Lanka		1 (1)				1 (1)
	Ghana			5 (1)			5 (1)
	Zambia			4 (1)			4 (1)
Africa	Algeria			2 (0)			2 (0)
	Egypt			2 (1)			2 (1)
	Morocco		1 (0)				1 (0)
	Benin			1 (0)			1 (0)
	Congo				1 (0)		1 (0)
	Kenya			1 (1)			1 (1)
	Mozambique			1 (0)			1 (0)
	Tanzania			1 (0)			1 (0)
	Germany		8 (7)			1 (0)	9 (7)
	France		3 (2)		1 (0)		4 (2)
Europe	Bulgaria			1 (0)			1 (0)
	Croatia					1 (1)	1 (1)
	Spain				1 (0)		1 (0)
	Sweden		1 (0)				1 (0)
	United Kingdom				1 (1)		1 (1)
	Syria			1 (0)			1 (0)
	Mexico			1 (0)			1 (0)
Oceania	Solomon Islands			1 (0)			1 (0)
	Total	34 (7)	56 (33)	111 (47)	21 (15)	19 (15)	241 (117)

Countries & Regions	32	Degree Students	145 (54)	Non-Degree Students	96 (63)
---------------------	----	-----------------	----------	---------------------	---------

▶ International Exchange Projects for 2023 (Grant Recipients)

Faculties / Graduate Schools	Name at the time of application	Selected Country	Faculty
Center for General Education	Intensive Practicum in English Language and Intercultural Understanding at the University of Sheffield, England	U.K.	SOKOLOVSKY, Jesse
Faculty of Humanities, Law and Economics	Thai Field Study -Thailand's current situation as seen through the activities of an international NGO-	Thailand	AYANO, Seiki
Faculty of Education	Implementation of overseas educational training in collaboration with the Faculty of Education at the University of Auckland	New Zealand	ARAO, Hiroko
	Overseas training to deepen understanding of language and culture "Overseas Educational Field Study B	Taiwan	HATTORI, Akiko
	Educational experience at a Japanese school in preparation for overseas educational training	Malaysia	MIYAKA, kunihide
Faculty & Graduate School of Medicine	International Exchange 2023 for Nursing Students	Germany	TANIMURA, Susumu
Graduate School of Engineering	Implementation of Twinning Program between Hanoi University of Science and Technology and the Graduate School of Engineering of Mie University (Continued through AY2023)	Viet Nam	MORI, Kazuo
	Organization of International symposiums in 7 research areas of graduate school of engineering and promotion of internationalized educational programs	Germany, India, Thailand, China, Italy, UK, France, Indonesia, USA, Bangladesh	MORI, Kazuo
Graduate School of Bioresources	Practical & experimental work for the late specialization at the partner university	Malaysia	NAKASHIMA, Chiharu
Graduate School of Regional Innovation Studies	The 15th International Workshop on Regional Innovation Studies	Taiwan, Thailand, Viet Nam	SUWABE, Keita
Center for International Education and Research	Learning Japanese and Cross-Cultural Understanding through Zoom Discussions with Students from Partner Universities Abroad (Japanese Discussion 2023)	All Partner Schools	FUKUOKA, Masako
	Language Training & Field Study by Beijing Foreign Studies University2023 (Online)	China	FUKUOKA, Masako
	Mie University Overseas Field Study 2023	Viet Nam	MATSUOKA, Chizuko
	Language and Intercultural Understanding Program at University of South Carolina, the United States of America	U.S.	SHOJI, Shinichi

International Exchange

Number of Foreign Researchers (Academic Year 2023)

Foreign Researchers	15
---------------------	----

Partner Universities and Institutions / University Level (24 Countries & Regions, 73 Universities / Institutions)

* The numbers in parentheses represent the execution date of the Faculty Level

As of April 1, 2024

Instutution's Name	Countries & Regions	Agreement Date	
		General Agreement	MOU
Jiangsu University	China	Jan. 15, 1986	Sep. 29, 1995
Chiang Mai University	Thailand	Aug. 22, 1989	Jan. 31, 1996
University of Tasmania	Australia	Apr. 01, 1996	Apr. 01, 1996
Polytechnic University of Valencia	Spain	Jul. 04, 1997	Jan. 10, 2003
Guangxi University	China	Feb. 22, 1999(Apr. 21, 1995: Bio.)	Feb. 22, 1999(Dec. 19, 1995: Bio.)
Kasetsart University	Thailand	Dec. 23, 1999	Jul. 24, 2000
Khon Kaen University	Thailand	Jul. 17, 2000(Aug. 25, 1994: Med.)	Jul. 17, 2000
University of Erlangen-Nurnberg	Germany	Mar. 16, 2001	Mar. 16, 2001
Dongguk University	Korea	Dec. 16, 2002	Mar. 24, 2004
Ewha Womans University	Korea	Dec. 17, 2002	Mar. 23, 2004
Xi'an University of Technology	China	Aug. 28, 2003	Aug. 28, 2003
Suranaree University of Technology	Thailand	Oct. 18, 2003(Sep. 08, 2000: Bio.)	Oct. 18, 2003
Bangladesh Agricultural University	Bangladesh	Mar. 15, 2004	Mar. 15, 2004
Tianjin Normal University	China	Nov. 20, 2004(Mar. 15, 2003 : Edu.)	Nov. 20, 2004(Mar. 15, 2003: Edu.)
University of North Carolina Wilmington	U.S.	Dec. 21, 2005	Dec. 21, 2005
Jiangnan University	China	Feb. 13, 2006(Mar. 30, 1998: Bio.)	Feb. 13, 2006(Mar. 30, 1998: Bio.)
IPB University	Indonesia	Sep. 24, 2006(Sep. 24, 2001: Bio.)	Sep. 24, 2006(Sep. 24, 2001: Bio.)
Sriwijaya University	Indonesia	Nov. 06, 2007	Nov. 06, 2007
Thammasat University	Thailand	Jan. 15, 2008(Feb. 27, 2004: Bio.)	Jan. 15, 2008(Feb. 27, 2004: Bio.)
Nanjing Tech University	China	Jul. 07, 2008	Jul. 07, 2008
Heidelberg University	Germany	–	Dec. 12, 2008
Henan Normal University	China	Dec. 15, 2008(Oct. 26, 2005 : Edu.)	Dec. 15, 2008(Oct. 26, 2005: Edu.)
Sejong University	Korea	Feb. 10, 2009	Feb. 10, 2009
Maejo University	Thailand	Mar. 31, 2009	Mar. 31, 2009
Foreign Trade University	Vietnam	May. 26, 2009	May. 26, 2009
Ho chi minh City University of Education	Vietnam	Jul. 28, 2009	Jul. 28, 2009
Shanghai Ocean University	China	Sep. 24, 2009(Oct. 16, 1995: Bio.)	Sep. 24, 2009(Oct. 24, 1996: Bio.)
Tashkent State Institute of Law	Uzbekistan	Mar. 22, 2010	Mar. 22, 2010
Inner Mongolia University of Technology	China	Mar. 31, 2010(Mar. 08, 2000: Eng.)	Mar. 31, 2010(Nov. 13, 2000: Eng.)
Haluoleo University	Indonesia	Jul. 23, 2010	Jul. 23, 2010
Hawai'i Pacific University	U.S.	Sep. 13, 2010	–
University of Sharjah	U.A.E	Oct. 04, 2010(Dec. 24, 2008: Med.)	Oct. 04, 2010(Dec. 24, 2008: Med.)
Yanbian University	China	Oct. 15, 2010	Oct. 15, 2010
University of Savoie	France	Nov. 04, 2010	Nov. 04, 2010
University of Bochum	Germany	Mar. 28, 2011	Mar. 28, 2011
Jaume I University	Spain	Apr. 14, 2011	Apr. 14, 2011
Cardiff University	U.K.	Jul. 15, 2011	Jul. 15, 2011
Anhui Agricultural University	China	Oct. 25, 2011(Oct. 21, 2008: Bio.)	Oct. 25, 2011(Oct. 21, 2008: Bio.)
University of Leipzig	Germany	–	Feb. 07, 2012
Padjadjaran University	Indonesia	Feb. 24, 2012	Feb. 24, 2012
Tati University College	Malaysia	May. 24, 2012(Aug. 02, 2010: Eng.)	May. 24, 2012
University Putra Malaysia	Malaysia	Aug. 08, 2012(Sep. 19, 2006: Bio.)	Aug. 08, 2012
Yunnan University	China	Aug. 20, 2012	Dec. 25, 2012
Beijing Foreign Studies University	China	Sep. 21, 2012(Mar. 23, 2012: Hum.)	Sep. 17, 2012
University of Central Lancashire	U.K.	Jan. 31, 2017	Apr. 19, 2013
National Kaohsiung Normal University	Taiwan	Jun. 18, 2013	Jun. 24, 2013
La Molina National Agrarian University	Peru	Aug. 23, 2013	Aug. 23, 2013
Fiji National University	Fiji	May. 05, 2014	May. 05, 2014
The University of the South Pacific	Fiji	May. 06, 2014	May. 06, 2014
Can Tho University	Vietnam	Sep. 12, 2014	Sep. 12, 2014
National Sun Yat-sen University	Taiwan	Nov. 04, 2014	Nov. 04, 2014
University of Zambia	Zambia	Nov. 11, 2014(Feb. 07, 2007: Med.)	Nov. 11, 2014(Feb. 07, 2007: Med.)
National Quemoy University	Taiwan	Jun. 23, 2015	Jun. 23, 2015
University of Sao Paulo	Brazil	Jul. 07, 2015(May. 16, 2011: Hum.)	Jul. 07, 2015
Southern Taiwan University of Technology	Taiwan	Aug. 28, 2015(Nov. 14, 2014: Inno.)	Aug. 28, 2015
Jeju National University	Korea	Sep. 14, 2015	Sep. 14, 2015
Sofia University St. Kliment Ohridski	Bulgaria	Sep. 19, 2016	Sep. 19, 2016
Royal University of PhnomPenh	Cambodia	Jan. 18, 2017	Jan. 18, 2017
National Taiwan Ocean University	Taiwan	Jan. 03, 2019	Jan. 03, 2019
University of San Carlos	Philippines	Aug. 16, 2019	Nov. 25, 2019
Chung Ang University	Korea	Oct. 14, 2019	Oct. 14, 2019
Aletheia University	Taiwan	Jan. 14, 2020(Oct. 21, 2014: Inno.)	Jan. 14, 2020
University of Malaysia Terengganu	Malaysia	Jul. 30, 2020(Nov. 28, 2017: Bio.)	Jul. 30, 2020(Nov. 28, 2017: Bio.)
Keimyung University	Korea	Aug. 12, 2021	Aug. 12, 2021
Zhengzhou University	China	Nov. 04, 2021	–
Central Luzon State University	Philippines	Oct. 18, 2022(Aug. 01, 2018: Bio.)	Oct. 18, 2022(Aug. 01, 2018: Bio.)

Instutution's Name	Countries & Regions	Agreement Date	
		General Agreement	MOU
THE UNIVERSITY OF WAIKATO	New Zealand	Jan. 31, 2023	–
East China University of Political Science and Law	China	Nov. 28, 2023	Nov. 28, 2023
Daegu National University of Education	Korea	Feb. 07, 2024	–
Indonesian "National Research & Innovation Agency"	Indonesia	Dec. 06, 2023	–
China Scholarship Council	China	Aug. 24, 2023	–
Shanghai International Studies University	China	Feb. 26, 2024	Feb. 26, 2024
Jilin Agricultural University	China	Nov. 28, 2023	Nov. 28, 2023

Faculty Level (24 Countries & Regions, 46 Universities / Institutions)

As of April 1, 2024

	Instutution's Name	Countries & Regions	Agreement Date	
			General Agreement	MOU
Center for General Education	The English Language Training Centre, the University of Sheffield	U.K.	Sep. 10, 2015	–
	University of Lille	France	Nov. 01, 1989	Mar. 15, 2013
Faculty of Humanities, Law and Economics	University Lyon 2	France	Jan. 21, 2002	Jan. 21, 2002
	Nankai University	China	Jan. 22, 2010	Mar. 18, 2013
	Faculty of Humanities and Theology, Lund University	Sweden	Mar. 18, 2011	Mar. 18, 2011
Faculty of Education	Faculty of Education and Social Work, the University of Auckland	New Zealand	Aug. 14, 2013	–
	School of Foreign Languages, Beijing Institute of Technology	China	Nov. 16, 2015	–
	Department of Japanese College of European and Asian Languages, Wenzao Ursuline University of Languages	Taiwan	Jul. 19, 2022	–
Graduate School of Medicine, Faculty of Medicine	Shanghai Jiao Tong University	China	Aug. 11, 2004	Dec. 01, 2009
	Guangxi Medical University	China	Jun. 06, 2006	Sep. 01, 2020
	School of Medicine Muhimbili University of Health and Allied Scences	Tanzania	Oct. 19, 2007	Oct. 19, 2007
	University of Ghana Medical School	Ghana	Feb. 18, 2010	Feb. 18, 2010
	School of Medicine, University of Perugia	Italy	Feb. 22, 2010	Feb. 22, 2010
	The Second Medical College of Lanzhou University	China	Mar. 17, 2011	Mar. 17, 2011
	University of Health Sciences, Lao PDR	Laos	Sep. 26, 2011	Sep. 26, 2011
	Amrita Institute of Medical Sciences	India	Jan. 30, 2012	Jan. 30, 2012
	University of Medicine-1, Yangon	Myanmar	Dec. 17, 2012	–
	Flinders University, School of Medicine	Australia	Feb. 27, 2014	Feb. 27, 2014
	Catholic University of Applied Sciences in Freiburg	Germany	Jun. 11, 2014	Jun. 11, 2014
	University of Washington School of Medicine	U.S.	Aug. 25, 2014	–
	University of Medicine, Mandalay	Myanmar	Nov. 04, 2014	–
	School of Health Science, University of the Philippines Manila	Philippines	Jul. 23, 2015	Jul. 23, 2015
	University of Medicine-2, Yangon	Myanmar	Oct. 22, 2015	–
	Bungabandhu Sheikh Mujib Medical University (BSMMU)	Bangladesh	Jul. 27, 2015	–
	The Faculty of Medicine and Dentistry University of Bergen	Norway	Jan. 21, 2016	–
	Universita degli Studi di Messina	Italy	Oct. 23, 2019	Oct. 23, 2019
	Thermal Engineering and Engineering Mechanics, Tsinghua University	China	Oct. 01, 1995	Nov. 01, 1995
	King Mongkut's Institute of Technology Ladkrabang	Thailand	Sep. 05, 2005	Sep. 05, 2005
Graduate School of Engineering, Faculty of Engineering	College of Science, Zhejiang University	China	Mar. 28, 2009	Mar. 28, 2009
	Ecole Nationale Supérieur d'Arts et Metiers (ENSAM)	France	Aug. 31, 2009	Aug. 31, 2009
	The Cleveland Clinic Foundation Lerner Research Institute	U.S.	Apr. 22, 2011	–
	The University of Padova, Department of Management and Engineering and Department of Civil	Italy	Feb. 17, 2014	Feb. 17, 2014
	Viet Nam Academy of Sciences and Technology(VAST) Institute od Energy Science(IES)	Vietnam	Sep. 30, 2014	Sep. 30, 2014
	School of Engineering, Reutlingen University	Germany	Mar. 05, 2015	Apr. 29, 2020
	Faculty of Mathematics and Natural Sciences, Universitas Gadjah Mada	Indonesia	Jan. 31, 2019	Jan. 31, 2019
	Faculty of Mathematics and Natural Sciences, Institut Teknologi Bandung	Indonesia	Feb. 19, 2019	Feb. 19, 2019
	Department of Chemical Engineering, National Cheng Kung University	Taiwan	Apr. 12, 2019	Apr. 12, 2019
	University of Malaysia Perlis	Malaysia	Dec. 27, 2021	Dec. 27, 2021
	Danang University-University of Science and Education	Vietnam	Feb. 24, 2022	Feb. 24, 2022
	College of Fisheries, College of Environmental and Marine Science and Technology, Pukyung National University	Korea	Sep. 22, 1995	Feb. 06, 2013
Graduate School of Bioresources, Faculty of Bioresources	School of Bioresources, King Mongkut's Institute of Technology Thonburi	Thailand	Oct. 20, 2009	Oct. 20, 2009
	Faculty of Bioscience Engineering Ghent University	Belgium	Mar. 09, 2015	Mar. 09, 2015
	Graduate Faculty of Agricultural Sciences and Marine Sciences Patein University	Myanmar	Dec. 04, 2016	–
	Faculty of Forestry, Mulawarman University	Indonesia	Jun. 14, 2023	–
	School of Graduate Studies and Research, University of Maryland Eastern Shore	U.S.	Mar. 12, 2024	Mar. 12, 2024
Graduate School of Regional, Innovation Studies	College of Business and Public Administration, Eastern Washington University	U.S.	Aug. 03, 2017	–

University Library

Usage Statistics (Academic Year 2023)





Total Number of Visitors		134,283
Number of Borrowers	Undergraduates	17,458
	Graduates	2,549
	Faculty & Staff Members	2,951
	Others (including emerituses and retired teaching staff)	741
	Total	23,699
Volumes Lent	Undergraduates	34,941
	Graduates	5,882
	Faculty & Staff Members	6,421
	Others (including emerituses and retired teaching staff)	2,160
Total		49,404
Photocopying Request from Outside		1,358
Request to Outside		1,471
Interlibrary Loan Lent		1,167
Borrowed		837

Library Holdings

As of April 1, 2024

Classification	Japanese Books	Foreign Books	Total
General Works	42,667	7,215	49,882
Philosophy	37,439	9,424	46,863
History	57,028	5,329	62,357
Social Science	149,241	21,741	170,982
Natural Science	127,197	44,721	171,918
Technology	55,473	15,403	70,876
Industry	49,587	9,488	59,075
Fine Arts	28,438	3,101	31,539
Language	23,592	10,042	33,634
Literature	60,363	18,141	78,504
Periodicals	73,263	83,239	156,502
Total	704,288	227,844	932,132

Academic Publication (Academic Year 2023)

Faculty of Humanities, Law and Economics	Jinbun Ronso 【Number of Copies】150 【Publication Frequency(Per Year)】Yearly	
	TRIO : Journal of Research Center for Culture and Society in Mie 【Number of Copies】1,000 【Publication Frequency(Per Year)】Yearly	
Faculty of Education	Bulletin of the Faculty of Education University Library HP Mie University Scholarly E-collections [MIUSE] (https://mie-u.repo.nii.ac.jp/) / 20 教育学部・教育学研究科 /20C 紀要 【Number of Copies】Available only on the web 【Publication Frequency(Per Year)】Yearly	
Graduate School of Medicine / Faculty of Medicine	Mie Nursing Journal University Library HP Mie University Scholarly E-collections [MIUSE] (https://mie-u.repo.nii.ac.jp/) / 30 大学院医学系研究科・医学部 /30C 紀要 【Number of Copies】Available only on the web 【Publication Frequency(Per Year)】Yearly	
Graduate School of Engineering / Faculty of Engineering	Research Activities in Faculty of Engineering, Mie University HP Research/Research achievements (https://www.eng.mie-u.ac.jp/research/activities/) 【Number of Copies】Available only on the web 【Publication Frequency(Per Year)】Yearly	
Graduate School of Bioresources / Faculty of Bioresources	Bulletin of the Graduate School of Bioresources, Mie University 【Number of Copies】400 【Publication Frequency(Per Year)】Yearly	
	Annals of Field Research and Technology, Mie University 【Number of Copies】200 【Publication Frequency(Per Year)】Yearly	
Graduate School of Regional Innovation Studies	Proceedings of the International Workshop on Regional Innovation Studies 【Number of Copies】180 【Publication Frequency(Per Year)】Yearly	
Organization for Higher Education Design	Mie University Journal of Studies on Higher Education 【Number of Copies】160 【Publication Frequency(Per Year)】Yearly	

University Hospital

Number of Patients (Academic Year 2023)

Clinics	Number of Beds	Number of Patients			
		Inpatients		Outpatients	
		Total Visits	Per Day	Total Visits	Per Day
Hematology and Oncology		7,857	21.5	7,721	31.8
Oncology		5,444	14.9	7,152	29.4
Dermatology		7,118	19.4	17,338	71.3
Ophthalmology		6,064	16.6	29,677	122.1
Cardiovascular Surgery / (Pediatric Cardiology and Cardiac Surgery)		6,325	17.3	3,464	14.3
Thoracic Surgery		1,929	5.3	2,248	9.3
Pulmonary		7,216	19.7	11,524	47.4
Diabetes and Endocrinology		1,400	3.8	14,226	58.5
Cardiology		11,288	30.8	17,766	73.1
Nephrology		2,245	6.1	7,880	32.4
Family Medicine		1,077	2.9	2,706	11.1
Hepato Pancreato Biliary Surgery		8,891	24.3	6,820	28.1
Gastroenterological Surgery		10,342	28.3	11,018	45.3
Pediatric Surgery		1,617	4.4	2,010	8.3
Gastroenterology and Hepatology		11,214	30.6	18,855	77.6
Neurosurgery		10,937	29.9	8,793	36.2
Neurology		4,917	13.4	9,935	40.9
Orthopedic Surgery		14,444	39.5	16,992	69.9
Plastic Surgery		1,744	4.8	3,448	14.2
Radiology		2,101	5.7	18,541	76.3

Clinics	Number of Beds	Number of Patients			
		Inpatients		Outpatients	
		Total Visits	Per Day	Total Visits	Per Day
Gynecology		13,146	35.9	16,663	68.6
Breast Surgery		2,993	8.2	12,311	50.7
Pediatrics / (Pediatric Cardiology and Cardiac Surgery)		9,135	25.0	7,974	32.8
Nephro-Urologic Surgery and Andrology		9,246	25.3	16,141	66.4
Oral and Maxillofacial Surgery		2,515	6.9	17,757	73.1
Psychiatry	30	6,731	18.4	19,694	81.0
Otorhinolaryngology-Head & Neck Surgery		11,878	32.5	13,383	55.1
Anesthesiology		24	0.1	4,416	18.2
Critical Care and Intensive Care Center		7,333	20.0	790	3.3
Maternity and Perinatal Care Center		16,244	44.4	0	0.0
Center for Rheumatic Diseases		1,590	4.3	5,897	24.3
Palliative Care		0	0.0	654	2.7
Infectious Diseases		0	0.0	78	0.3
Advanced Reproductive Medical Center		0	0.0	7,445	30.6
Cancer Genome (Department)		0	0.0	944	3.9
Rehabilitation		0	0.0	339	1.4
Center for Kampo Medicine		0	0.0	1,701	7.0
Common Beds	655				
Total	685	205,005	560.1	344,301	1,416.9

*Total number of patients for Intensive Care Center shows only numbers of patients at the emergency department. *Total number and the average of patients per day are based on the business day of 243 days. *The number of patients for hepatobiliary pancreatic and transplant surgery includes number of patients for general surgery. *As the general ward of the hospital made the beds available across all departments in AY2018, there are no beds specific to a particular department.

As of April 1, 2024

Clinical Facilities

Medical Division

Family Medicine
Cardiology
Hematology and Oncology
Gastroenterology and Hepatology
Neurology
Pulmonary
Oncology
Nephrology
Diabetes and Endocrinology
Infectious Diseases
General Surgery
Gastroenterological Surgery
Hepato Pancreato Biliary Surgery
Cardiovascular Surgery
Thoracic Surgery
Breast Surgery
Pediatric Surgery
Orthopedic Surgery
Gynecology
Pediatrics
Psychiatry
Dermatology
Nephro-Urologic Surgery and Andrology

Ophthalmology
Otorhinolaryngology-Head & Neck Surgery
Neurosurgery
Plastic Surgery
Radiology
Diagnostic Pathology
Cancer Genome (Department)
Anesthesiology
Palliative Care
Emergency Department
Oral and Maxillofacial Surgery
Rehabilitation
General Medicine
Genomic Medicine
Critical Care and Intensive Care Center
Maternity and Perinatal Care Center
Breast Center
Vascular and Heart Center
Advanced Reproductive Medical Center
Center for Rheumatic Diseases
Center for Kampo Medicine
Digestive Disease Center

Central Division

Laboratory
Operating Division
Radiology Division
Supply Division
Blood Transfusion and Cell Therapy Department
Intensive Care Unit Department
Pathology Division
Division of Endoscopic Diagnostics and Therapeutics
Hemodialysis Unit
Rehabilitation Division
Department of Nutrition
Clinical Engineering
Outpatient Chemotherapy
Medical Support Center for Liver Diseases
Organ Transplant Center
Oral Care Center
Total Care Center for Adolescents and Young Adults with Cancer and Children
Center of Dementia Prevention and Therapeutics
Palliative Care Center
Pain Center
Ultrasound Examination Center

Support Division

Medical Information Control Center
Clinical Training / Career Support
Patient Safety Control Division
Infection Control Unit
Clinical Research Support Center
Comprehensive cancer treatment center
Ai Center
Public Relations Center
CCU Network Support Center
Center for disaster management promotion and education
Center for Disaster Medicine
International Medical Support Center
Comprehensive Patient Support Center
Promotion Center for Team Medical Care
Biobank Center (Biorepository)
Center for Infectious Disease Emergency
Stroke and Cardiovascular Diseases Support Center
Center for Digital Transformation in Healthcare

- Department of Pharmacy
- Department of Nursing
- Comprehensive Cancer Treatment Center

Mutual Cooperation Agreement with Community

As of April 1, 2024

Name of Organization	Agreement Date
◆National Institute	
Chubu Regional Development Bureau, Ministry of Land, Infrastructure, Transport and Tourism	Dec. 19, 2011
Ministry of Land, Infrastructure, Transport and Tourism Kinki Regional Development Bureau others	Mar. 27, 2015
◆Mie Prefecture	
Agreement on Mutual Cooperation for Disaster Control with Mie Prefecture	Dec. 21, 2005
Specific Agreement on Mutual Cooperation for Disaster Control with Mie Prefecture	Mar. 20, 2007
Comprehensive agreement on cooperation with the Mie Prefectural Science and Technology Promotion Center (now the Mie Prefecture Industrial Research Institute)	Mar. 23, 2007
Collaboration Agreement on the field of "Medicine" with Mie Prefecture	Jan. 29, 2010
Mie Prefecture (Department of Disaster Mitigation)	May 26, 2010
Collaboration Agreement on Promotion of Demonstrating Arts with Mie University	Sep. 12, 2013
Mutual Agreement with Mie Prefectural Museum	Feb. 26, 2014
Agreement on Establishment of Mie Disaster Mitigation Center with Mie Prefecture	Apr. 01, 2014
Agreement on Hosting of International Conferences with Mie Prefecture	Nov. 22, 2016
Agreement related to collaboration and cooperation for revitalizing the region, etc., concluded by Mie Prefecture; Mie Industry and Enterprise Support Center; National niversity Corporation Mie University; Collaborative Research Organization for Future Regional Society, The University of Tokyo; and Educational Corporation Mie Ohashi Gakuen	Feb. 22, 2019
Collaboration Agreement with ZTV Co., Ltd. and Mie Prefecture on the Use of Local 5G	Jul. 11, 2023
◆Agreement on mutual friendship cooperation with municipalities	
Owase City	Dec. 02, 2002
Yokkaichi City	Oct. 07, 2003
Kameyama City	Jan. 27, 2007
Toba City	Mar. 22, 2004
Asahi cho	Jun. 09, 2004
Shima City	Jun. 21, 2005
Iga City	Jan. 23, 2006
Tsu City	Feb. 20, 2009
Suzuka City	Jun. 30, 2010
Ise City	Jan. 27, 2011
Kuwana City	Jul. 01, 2013
Matsusaka City	Aug. 29, 2013
Minamiise cho	Jun. 02, 2015
Tamaki cho	Oct. 05, 2016
Kisosaki cho	Jan. 16, 2017
Meiwa cho	Jan. 19, 2017
Toin cho	Jan. 23, 2017
Odai cho	Feb. 14, 2017
Kihoku cho	Feb. 14, 2017
Nabari City	Feb. 20, 2017
Kumano City	Feb. 21, 2017
Mihama cho	Feb. 21, 2017
Kiho cho	Feb. 21, 2017
Taki cho	Feb. 24, 2017
Watarai cho	Mar. 27, 2017
Komono cho	Mar. 28, 2017
Inabe City	Mar. 30, 2017
Kawagoe cho	Mar. 30, 2017
Taiki cho	Mar. 31, 2017
Kuwana city・Kuwana city Medical Center	Mar. 30, 2022
Iga City, Iga Cultural City Association, Ueno Chamber of Commerce and Industry	Mar. 26, 2024
◆Educational Institutions	
Wakayama University	Nov. 30, 2004
Suzuka University of Medical Science	Jun. 22, 2007
Mie Prefecture Board of Education	Oct. 18, 2013
University Support Project for Strategic Collaboration	Sep. 26, 2008
Asahi University	Feb. 03, 2010
Nagoya University and Aichi University of Education	Apr. 24, 2012
Ritsumeikan University・Shima City	Aug. 28, 2013
Mie Veterinary Medical Association	Mar. 27, 2015
Agreement on Consortium of Higher Education in Mie with Mie Prefecture and Higher Education Institutions within the Prefecture	Mar. 29, 2016

Mutual Cooperation Agreement with Community／Extension Courses and Others (Academic Year 2023)

Name of Organization	Agreement Date
Agreement by National University Corporations in the Tokai Region related to response to large-scale disasters	Jan. 14, 2017
Non-profit Incorporated Foundation Fishery Science Association as the designated management body for Toba Sea-Folk Museum	Mar. 18, 2019
Mie University CO-OP	Oct. 15, 2019
Fujita Health University・Hamamatsu University School of Medicine	Mar. 31, 2022
Sekisui Museum	June 23, 2023
◆Private Sectors	
Auto Networks Technologies, Ltd.	May 25, 2005
CHUBU Electric Power Co. Inc.	Sep. 14, 2005
Fuji Electric Co., Ltd.	Feb. 22, 2006
Hyakugo Economic Research Institute, The Hyakugo Bank,Ltd.	Mar. 10, 2006
Development Bank of Japan	Mar. 10, 2006
Okasan Holdings Inc.(now the Okasan Securities Group)	Jun. 05, 2006
The Mie Bank Ltd.	May 28, 2007
Sumitomo Mitsui Trust Bank	Nov. 01, 2007
The Daisan Bank	Apr. 20, 2009
Mitsubishi UFJ Research and Consulting	Jul. 09, 2009
JA-Mie Chuokai	Nov. 12, 2009
Nippon Menard Cosmetic Co., Ltd.	Mar. 09, 2015
Japan Finance Corporation Tsu Branch	Mar. 31, 2016
Mobilityland Corporation	Nov. 18, 2016
K.MIKIMOTO & CO.,LTD.	Nov. 09, 2020
Central Japan International Airport Co., Ltd.	Feb. 22, 2024

Etension Courses and Others (Academic Year 2023)

Extension Courses

Department	Course Title	Number of Event	Total Number of Participants (Approx.)
Faculty of Humanities, Law and Economics	Faculty of Humanities, Law and Economics 2023 Extension Course: Handbook on the Tale of Genji – Focusing on the Later Years of Murasaki-no-Ue others	32	1,076
Faculty of Education	63th star-watching party others	4	242
Graduate School of Medicine / Faculty of Medicine / University Hospital	Common Sense About CDI You Might Not Know others	19	—
Graduate School of Engineering / Faculty of Engineering	14th Summer Vacation Creative Manufacturing Experience Seminar others	8	330
Graduate School of Bioresources / Faculty of Bioresources	Graduate School of Bioresources Open Laboratory 2023 others	7	53
Graduate School of Regional Innovation Studies	The 15th International Workshop on Regional Innovation Studies (IWRIS2023) others	78	2,471
Others	Mie Academic Seminar 2023 others	143	6,143
Total		291	10,315

Delivery Lectures (Intended for high school)

Department	Course Title	Number of Event	Total Number of Participants (Approx.)
Faculty of Humanities, Law and Economics	The History of America Viewed Through Superheroes others	13	638
Faculty of Education	The field of education research others	7	281
Faculty of Medicine	The Latest in Surgical Treatment others	3	145
Faculty of Engineering	Mysteries of "nano" metals others	10	514
Faculty of Bioresources	The History of Flowers and Insects: Why Are There So Many Kinds of Flowers? others	3	50
Total		36	1,628

Campus Map

Mie University

Postal Code: 514-8507

1577 Kurimamachiya-cho Tsu city, Mie

TEL +81-(0) 59-232-1211

Graduate School of Medicine, Faculty of Medicine, University Hospital

Postal Code: 514-8507

2-174 Edobashi Tsu city, Mie

TEL +81-(0) 59-232-1111



Map of Affiliated Schools

Kindergarten

Postal Code: 514-0062 523 Kannonji-cho Tsu city, Mie
TEL +81-(0) 59-227-1711

Primary School

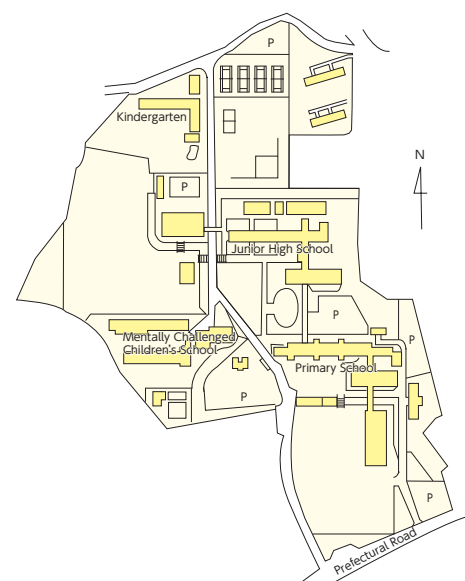
Postal Code: 514-0062 359 Kannonji-cho Tsu city, Mie
TEL +81-(0) 59-227-1295

Junior High School

Postal Code: 514-0062 471 Kannonji-cho Tsu city, Mie
TEL +81-(0) 59-226-5281

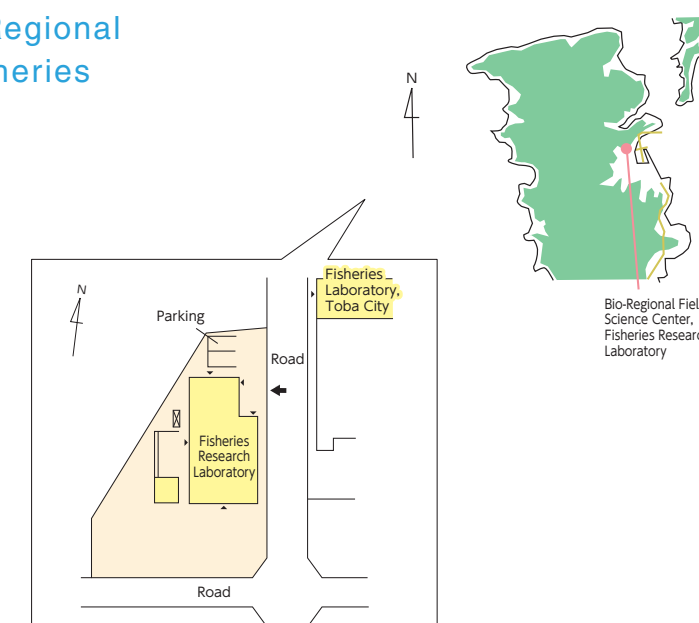
Mentally Challenged Children's School

Postal Code: 514-0062 484 Kannonji-cho Tsu city, Mie
TEL +81-(0) 59-226-5193



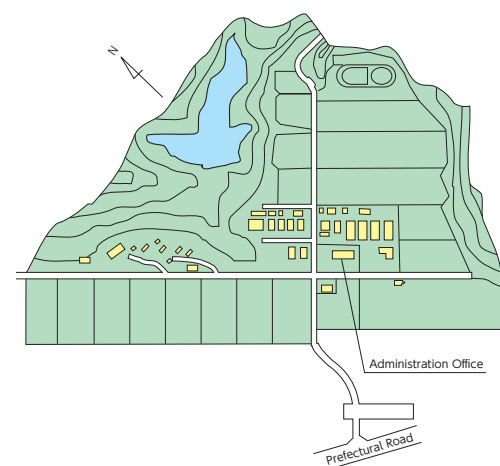
Map of Kii-Kuroshio Bio-Regional Field Science Center, Fisheries Research Laboratory

Postal Code: 517-0015
641-9 Ohama-cho Toba city, Mie
TEL +81-(0) 599-37-7310



Map of Kii-Kuroshio Bio-Regional Field Science Center, Farm Station

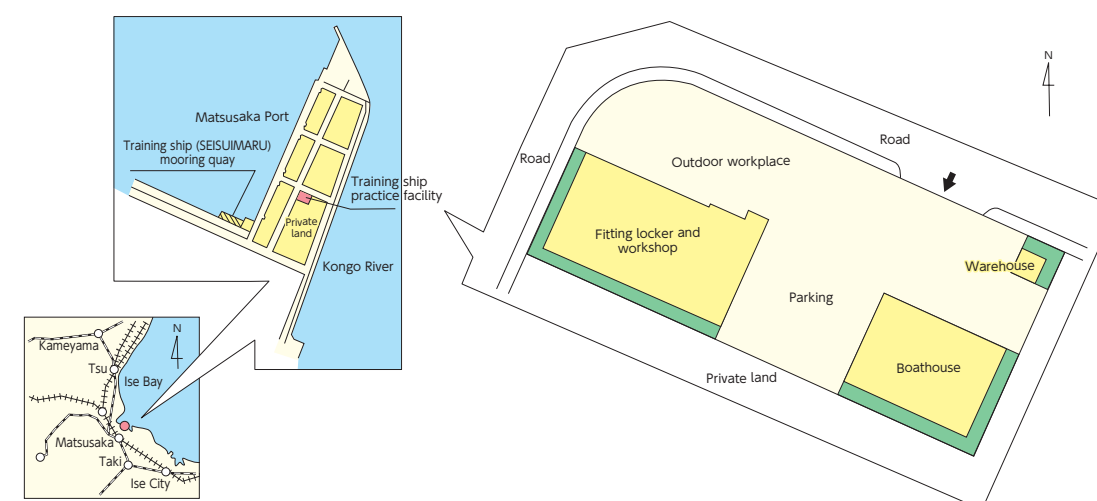
Postal Code: 514-2221
2072-2 Takanoo-cho Tsu city, Mie
TEL +81-(0) 59-230-0044



Map of Training Ship "SEISUIMARU" Base

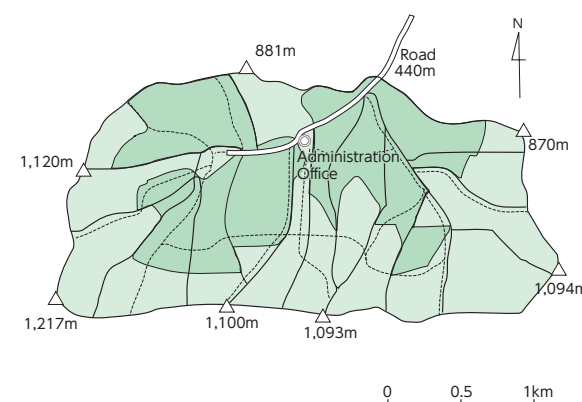
Postal Code: 515-0001 1819-18 Aza Tsukiji,
Ooguchi-cho Matsusaka city, Mie
TEL +81-(0) 598-51-0710

TEL +81-(0) 598-50-1066 (Matsusaka Port)
TEL +81-(0) 90-3022-8767 (Ship Mobile)



Map of Kii-Kuroshio Bio-Regional Field Science Center, Forest Station

Postal Code: 515-3532
2735 Kawakami Misugi-cho Tsu city, Mie
TEL +81-(0) 59-274-0135



Welfare Facilities

Welfare Facilities

As of April 1, 2024

Name	Total Floor Space (㎡)	Capacity
Center for Physical & Mental Health	549	
Regional Co-creation Plaza	1,389	Capacity 615
Cafeteria 2	1,012	// 296
Suiryo-Kaikan (Student Hall)	1,762	// 75 (Dining Hall)

Dormitories

As of April 1, 2024

Name	Total Floor Space (㎡)	Capacity
Anotsu-Ryo (Men's Dormitory)	3,851	Capacity 109
Seiwa-Ryo (Women's Dormitory)	1,245	// 60
Omi-Ryo (Women's Dormitory for International Students)	2,137	// 75 (Japanese Students 50 International Students 25)
University Foreign Students' House	1,221	Single Rooms 30 Couple Rooms 5
Foreign Students' Dormitory	3,428	Capacity 160

Athletic Facilities and Facilities for Extracurricular Activities

As of April 1, 2024

Name			Name		
Floor Space/Number			Floor Space/Number		
First Gymnasium	Floor, etc.	1,577㎡	Kyudo Gymnasium (6 persons can simultaneously shoot)		
	Judo Hall	137㎡	Second Kyudo Gymnasium (8 persons can simultaneously shoot)		
	Kendo Hall	135㎡	Equestrian Area and Stables		
Second Gymnasium	Floor, etc.	1,195㎡	Sports complex A		
	Judo Hall	123㎡	Sports complex B		
	Karatedo Hall	126㎡	Boat House		
Indoor Training Center			Garage for Car Clubs		
Outdoor Track and Field (Officially approved 400 m track)			Facilities for Extracurricular Cultural Activities		
Baseball ground			Campus Lodging Facilities for Extracurricular Activities		
Soccer / Rugby Field			Facilities for Extracurricular Sports		
Tennis Courts			Shower Room		
First Sports Field			Field Managing Office		
Second Sports Field			Nagai Memorial Training Room		
Swimming Pool (50 m long, 8 courses)			Club House –SINFONIA–		

Land and Buildings

As of May 1, 2024

Districts	Divisions	Area (㎡)	Building (㎡)	Districts	Divisions	Area (㎡)	Building (㎡)
Kanihama	Administration Bureau	528,340	4,509	Kan'nonji	Kindergarten	3,403 * 91,759	953
	Organization for Research Initiative and Promotion		15,636		Primary School		6,503
	Center for Information Technologies and Networks		1,410		Junior High School		5,728
	Center for Physical & Mental Health		549		Mentally Challenged Children's School		3,509
	University Library		10,411		Others		2,303
	Center for General Education		12,256		Total	3,403 * 91,759	18,996
	Faculty of Humanities, Law and Economics		5,295	Others	Kii-Kuroshio Bio-Regional Field Science Center		
	Faculty of Education		15,356		Farm Station	353,179	7,276
	Integrated Center for Educational Research and Practice		1,727		Forest Station	4,569,562	1,421
	Faculty of Medicine		33,842		Fisheries Research Laboratory (Toba)	* 1,299	594
	University Hospital		72,798		Others	35,649	1,120
	Faculty of Engineering		29,741		Training Ship Base	1,356	574
	Faculty of Bioresources		32,529		Boat House	* 241	223
	Graduate School of Regional Innovation Studies		1,568		Men's Dormitory	7,966	3,851
	Gymnasiums		6,575		University Housing	10,395	7,607
	Sansui Hall		4,084		Total	4,978,107 * 1,540	22,666
	University Housing		1,331	Grand Total			5,509,850 * 93,299
	Women's Dormitory		3,382	The measurement of buildings (㎡) shows the gross floor area. * indicates leased lands			
	Foreign Students' House		1,221				
	Foreign Students' Dormitory		3,428				
	Special Facilities for Common Use		16,657				
	Others		7,258				
	Total	528,340	281,563				

Training Ship “SEISUI MARU”

As of April 1, 2024

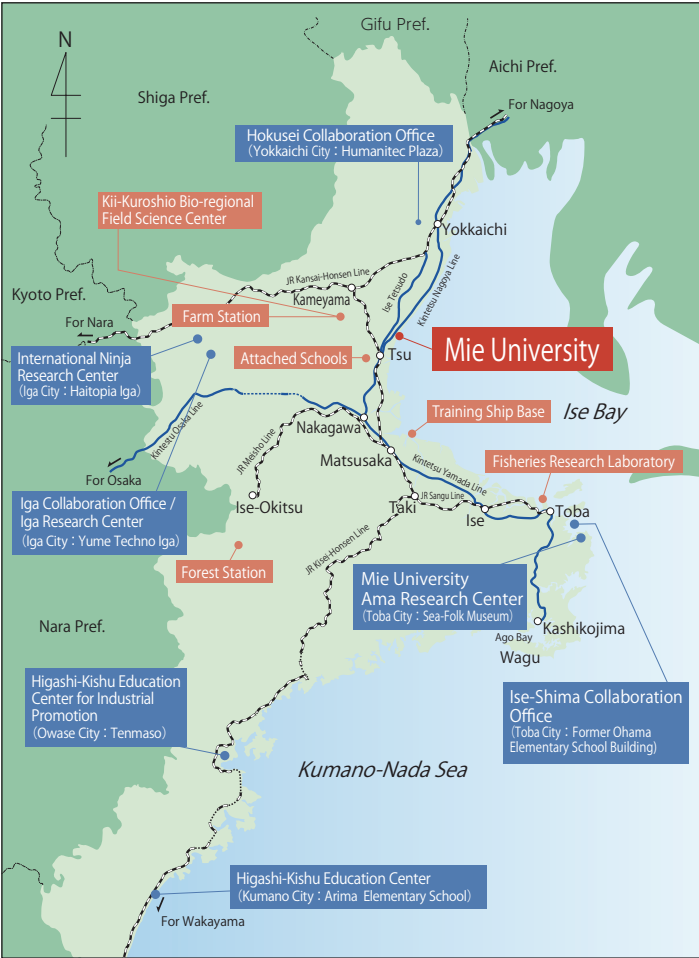
Length (O.A.)	50.90m	Diesel Engine 1,300PS	1 Engine
Breadth (MLD)	8.60m	Speed	10.0 Kt
Depth (MLD)	3.75m	Complement (Capacity)	44 people
Gross Tonnage	318t	Built	January30, 2009

Campus Addresses

Division			Address	Phone
Faculty of Humanities, Law and Economics			1577 Kurimamachiya-cho Tsu city, Mie Pref. 514-8507	+81-(0) 59-232-1211
Faculty of Education				
Kindergarten			523 Kan'nonji-cho, Tsu city, Mie Pref. 514-0062	+81-(0) 59-227-1711
Primary School			359 Kan'nonji-cho, Tsu city, Mie Pref. 514-0062	+81-(0) 59-227-1295
Junior High School			471 Kan'nonji-cho, Tsu city, Mie Pref. 514-0062	+81-(0) 59-226-5281
Mentally Challenged Children's School			484 Kan'nonji-cho, Tsu city, Mie Pref. 514-0062	+81-(0) 59-226- 5193
Graduate School of Medicine / Faculty of Medicine			2-174 Edobashi Tsu city, Mie Pref. 514-8507	+81-(0) 59-232-1111
University Hospital				
Graduate School of Engineering / Faculty of Engineering			1577 Kurimamachiya-cho Tsu city, Mie Pref. 514-8507	+81-(0) 59-232-1211
Graduate School of Bioresources / Faculty of Bioresources				
Kii-Kuroshio Bio Regional Field Science Center			2072-2 Takanoo-cho Tsu city, Mie Pref. 514-2221	+81-(0) 59-230- 0044
Farm Station				
Forest Station			2735 Kawakami Misugi-cho Tsu city, Mie Pref. 515-3532	+81-(0) 59-274- 0135
Fisheries Research Laboratory			641-9 Ohama-cho Toba city, Mie Pref. 517-0015	+81-(0) 599- 37-7310
Training Ship “SEISUI MARU”			Matsusaka Port Auto Shipping Telephone	+81-(0) 598- 50-1066 +81-(0) 90-3022-8767
Training Ship Base			1819-18 Okuchi-cho Matsusaka city, Mie Pref. 515-0001	+81-(0) 598- 51- 0710
Graduate School of Regional Innovation Studies			1577 Kurimamachiya-cho Tsu city, Mie Pref. 514-8507	+81-(0) 59-232-1211
Organization for Education Development & Student Service				
Head Office for Research & Social Collaboration				
Mie Regional Plan Co-creation Organization				
Organization for Research Initiative and Promotion				
International Ninja Research Center			Haitopia Iga, floor 2 500 Ueno-marunouchi Iga city, Mie Pref.518-0873	+81-(0) 595-51-7154
Regional Satellites	Hokusei Regional Satellite Campus	Hokusei Collaboration Office	Yumanitekupuraza, floor 1 1-4-28 Unomori Yokkaichi city, Mie Pref. 510-0074	+81-(0) 59-353-8260
	Matsusaka-Taki Regional Satellite Campus			+81-(0) 59-232-1211
	Ise-Shima Regional Satellite Campus	Mie University Ama Research Center	Toba Sea-Folk Museum 1731-68 Ogitsu Uramura-cho Toba city, Mie Pref. 517-0025	+81-(0) 59-231-9194 (Office, Faculty of Humanities, Law and Economics)
		Ise-Shima Collaboration Office	Former Ohama Elementary School Building, floor 2 97 Ohama-cho Toba city,Mie Pref. 517-0015	+81-(0) 599-37-7056
	Iga Regional Satellite Campus	Iga Collaboration Office / Iga Research Center	Regional Industrial Creation Center by Industry-academia government Collaboration "Yume Techno Iga" 1-3-3 Yumegaoka Iga city, Mie Pref. 518-0131	+81-(0) 595-41-1071
	Higashi-Kishu Regional Satellite Campus	Higashi-Kishu Education Center	Arima Elementary School 2nd Building,froor 2 530 Arima-cho Kumano city, Mie Pref. 519-4325	+81-(0) 80-2446-7345
		Higashi-Kishu Education Center for Industrial Promotion	Higashi-Kishu Education Center for Industrial Promotion "Tenmaso"161 Tenmaura Owase city, Mie Pref. 519-3602	+81-(0) 59-231-9673 (Office, Faculty of Bioresources)
	University Library			1577 Kurimamachiya-cho Tsu city, Mie Pref. 514-8507
Center for International Education and Research				
Center for Information Technologies and Networks				
Center for Global Environment Education & Research				
Center for Physical & Mental Health				
Administration Bureau				

Location of Campus

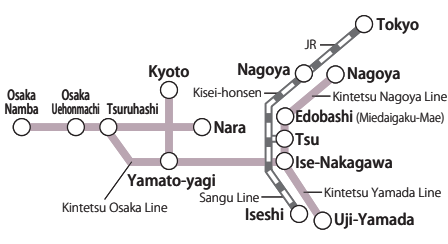
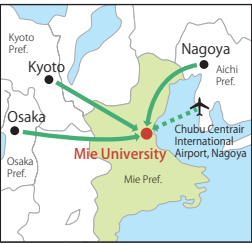
Mie Prefecture



Tsu



Access



By Kintetsu Express

From Nagoya	Kintetsu Nagoya Station	60 min.	Edohashi Station	By Walk
From Kyoto/Osaka	Ise-Nakagawa Station	15 min.		15 min.

By Kintetsu Limited Express

From Nagoya	Kintetsu Nagoya Station	50 min.		
From Osaka	Osaka Namba Station	90 min.		By Bus
From Kyoto	Kyoto Station	110 min.		15 min.
			Tsu Station	By Taxi
				10 min.

By JR Mie Rapid

From Nagoya	JR Nagoya Station	50 min.	
-------------	-------------------	---------	--

- 1. From the bus stop No. 4 at the East Exit of Tsu Station take Mie Kotsu bus bound for "Shiratsuka Station" (Route No. 6), "Mie Byoin" (Route No. 51), "Mukumoto" (Route No. 52), "Toyogaoka" (Route No. 52), "Science City" (Route No. 52), "Higashitoyono" (Route No. 53), or "Takadakoko-mae" (Route No. 56) and get off at "Mie Daigaku-mae." (For the University Hospital, Faculty of Medicine, or Faculty of Engineering, get off at "Daigaku Byoin-mae.")
- 2 By taxi from Tsu Station (10 min.)
- On foot from Edohashi Station (15 min.)
- By Tsu Airport Line (high speed boat) from Chubu Centrair International Airport, Nagoya to Tsu Nagisamachi Port (Tsu city Marina) (45 min.)
- 1 By Mie Kotsu (Sanco) Bus from Tsu Nagisamachi Port to Tsu Station (15 min.)
- 2 By taxi from Tsu Nagisamachi Port to Mie University (15 min.)



(Logo of Mie University)

Designed by Professor Emeritus
Shuhei Miyata

— "M" of Mie

— "U" of University

— Opening book

— Image of
Ocean and Wave



Mie University
1577 Kurimamachiya-cho Tsu city, Mie Pref.
514-8507 JAPAN
TEL +81-(0)59-232-1211
URL <https://www.mie-u.ac.jp/>



Edited September, 2024
Published November, 2024
by Public Relations Office, General Affairs and Planning Department