

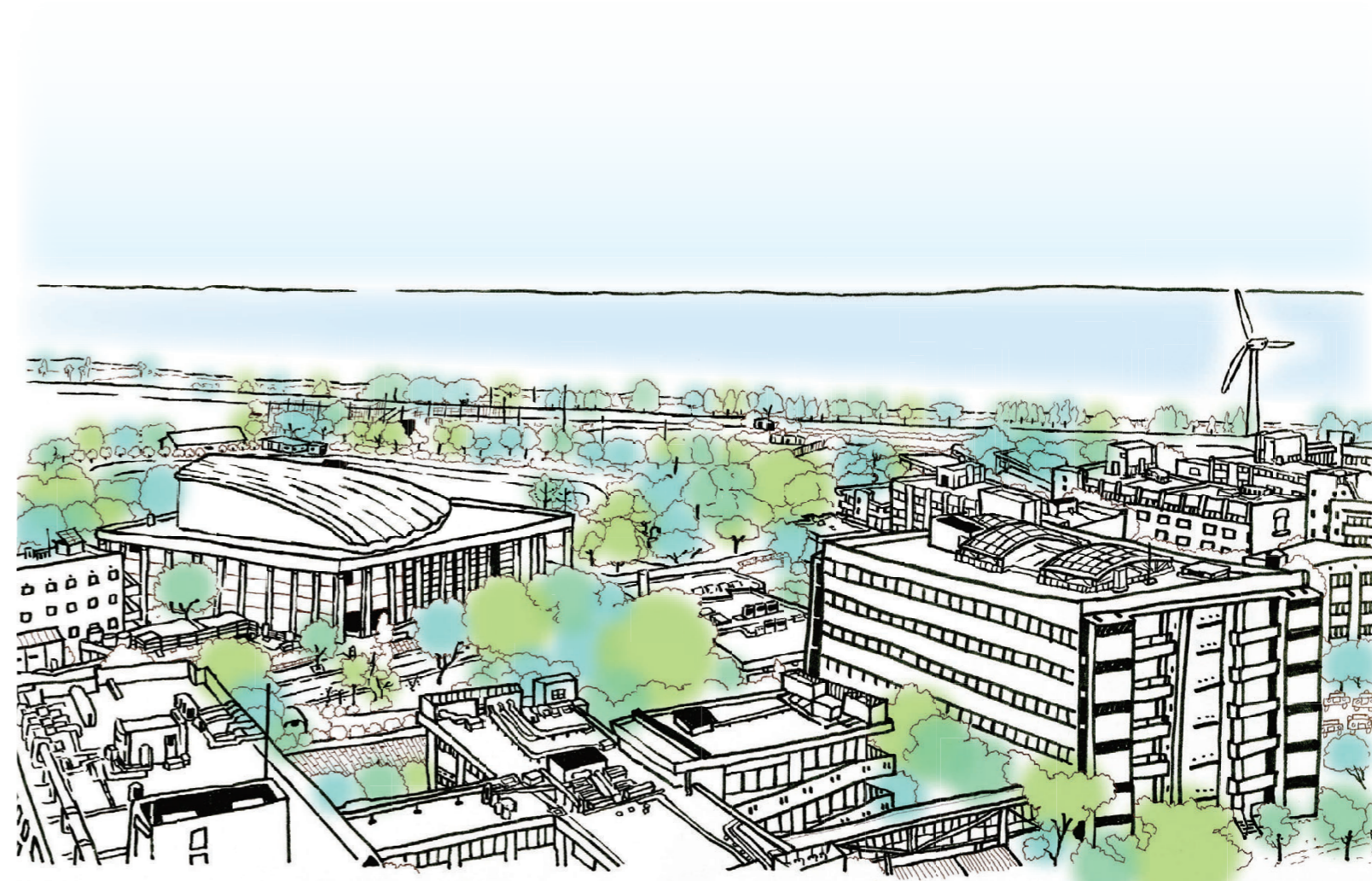
Outline of
MIE University

2023



July, 2023
Edited by General Affairs Office
September, 2023
Published by Public Relations Office

Mie University
1577 Kurimamachiya-cho Tsu city, Mie Pref.
514-8507 JAPAN



MIE UNIVERSITY



Academic Calendar for 2023

■ Entrance Ceremony	Apr. 4	■ Spring Semester Starts	Apr. 11	■ Fall Semester Starts	Oct. 2
■ Foundation Anniversary of Mie University	May 31	■ Spring Semester Ends	Aug. 1	■ Fall Semester Ends	Feb. 2
■ Graduation Ceremony	Mar. 25				

Outline of Mie University

President, Trustees, and Auditors **9 persons**

Faculty Members **741 persons**

Staff Members **1,328 persons**

Undergraduate Students **5,884 persons**

Graduate Students **1,217 persons**

International Students **261 persons**

Partner Institutions on University Level **in 23 Countries & Regions**
67 Universities / Institutions

Partner Institutions on Faculty Level **in 24 Countries & Regions**
44 Universities / Institutions

Revenues・Expenses **51,074 million yen**

Area of Land **5,509,850 m²**

Area of Building **321,757 m²**

Library Holdings **937,473 books**

CONTENTS

- Our Mission and Vision Vision 2030 03
- Mie University in Figures 05
- Governing Structure 07
- Operational Organization Chart 09
- Historical Chart 11
- Administrative Staff 13
- Faculties and Graduate Schools/ Institutes for Education and Research 15
- Mie University Research Centers 19

《Data》

- Number of Staff Members 20
- Admission Capacity and Number of Students 21
- Schools Affiliated with Faculty of Education 21
- Number of Scholarship Grantees 22
- Numbers of 2023 Applicants and Entrants 23
- Applicants and Entrants by Prefectures (Undergraduate) 23
- Number of 2022 Graduates and Number of Degrees Conferred 24
- Career Paths of 2022 Graduates 25
- Employment Situation by Industries (Faculties) / Employment Situation by Region (Faculties) / Employment Situation by Prefectures (Faculties) 27
- Number of International Students 28
- International Exchange Projects of 2022 (Grant Recipients) 28
- International Exchange 29
- University Library 31
- University Hospital 32
- Budget (Academic Year 2023) 33
- Grant-in-Aid for Scientific Research & Research in Cooperation with Private Sectors (Academic Year 2022) 33
- Welfare Facilities 34
- Land and Buildings 34
- Mutual Cooperation Agreement with Community 35
- Extension Courses and Others 36
- Campus Map 37
- Location of Campus 41
- Access 41
- Campus Addresses 42

Our Mission

From Mie to the world, from the world to Mie — Mie University builds a better future in the spirit of co-creation with local communities.

The University engages in community-based, world-class teaching and research, and strives for co-creation with local communities in harmonious coexistence between mankind and nature.

Vision

Education

The University nurtures individuals with broad knowledge in liberal arts and sciences, highly specialized knowledge and skills, and a global perspective, capable of driving innovations in society.

Research

The University engages in research activities that conform to high international and ethical standards, producing distinctive state-of-the-art research that contributes to the world, unique community-based research, applied research that provides solutions to problems in our society, and diverse basic research that paves the way for the future.

Social Contributions

The University aspires to realize an enriched, healthy, sustainable society. It contributes to the development and revitalization of society by promoting industry-academia-government partnerships, working to solve various problems as a center for collaboration and co-creation with local communities, and implementing those solutions in society.

Emblem



The school emblem has a double ring structure; one ring represents an ear of rice for a rewarding life; the other ring of waves, Rourin, represents the philosophy of Mie University, "Sansui: the three greens of sky, waves and mountain." This double ring structure expresses Mie University's philosophy and wishes of long friendships and productive lives for its alumni. In addition, the emblem is generally symmetrical, but the asymmetrical aspect of the design shows the free and progressive spirit of Mie University. Mie University's predecessor, Mie Normal School, was founded in 1874 and is the oldest of the existing five faculties.

Message

Mie University is situated in a beautiful location, surrounded by the waters of Ise Bay, and the verdant forests of the Suzuka and Nunobiki Mountains, under the expanse of clear skies dotted with white clouds. The aim of Mie University is to produce results from its unique education and research that are second to none anywhere in the world. Mie University is striving to be a university that connects with the community in the three domains of education, research, and medicine. Mie University not only develops human resources that will be capable of taking a leading role in the new age, but also broadly share the outcomes of the education and research that will produce such human resources with the world, and continue to fulfill its social responsibility as a university.

President

Masaaki Ito



University Vision 2030

From Mie to the world, from the world to Mie — Mie University builds a better future in the spirit of co-creation with local communities.

Education: Education that brings out individuals' power to take action using links with the local community, wider society, and the world

- Nurturing individuals with the active capability to lead local communities
- Cultivating individuals committed to generating new forms of value
- Enhancing recurrent education that provides learning opportunities to local working adults

Research: Diverse and creative research to support co-creation with society

- Distinctive, state-of-the-art research that strives to be world-class
- Applied research that seeks to solve problems in society
- Diverse basic research that paves the way for the future
- Cross-disciplinary graduate schools that transcend conventional boundaries

Social Contributions: Mie model of regional revitalization

- Applying leading-edge technologies in society and using them to generate novel social value
- Solving local problems and advancing local culture
- Building a safe, secure, and comfortable society

Healthcare: Development of regional healthcare through advanced medical practice and training of healthcare professionals

- Providing all residents of Mie Prefecture with high-quality healthcare
- Training healthcare professionals
- Promoting state-of-the-art medical research

Faculties

5 Faculties **9** Departments **1** program

- Humanities, Law and Economics
- Education
- Medicine
- Engineering
- Bioresources

- Humanities, Law and Economics
- Training Course for School Teachers
- School of Medicine, School of Nursing
- Department of Engineering
- Sustainable Resource Sciences, Environmental Science and Technology, Life Sciences, Marine Bioresources

Graduate Schools

6 Graduate Schools

- Humanities and Social Sciences
- Education
- Medicine
- Engineering
- Bioresources
- Regional Innovation Studies

Number of Staff Members (As of May 1, 2023)

2,078 Executive Officers **9** Teachers **741** Staff **1,328**

Number of Undergraduates (As of May 1, 2023)

5,884

Number of International Students (As of May 1, 2023)

261

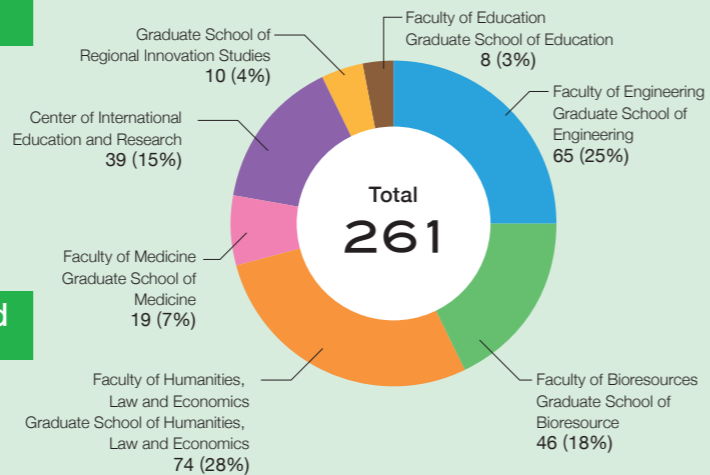
Number of Graduates (As of May 1, 2023)

1,217

Number of Students Studying Abroad (Academic Year 2022)

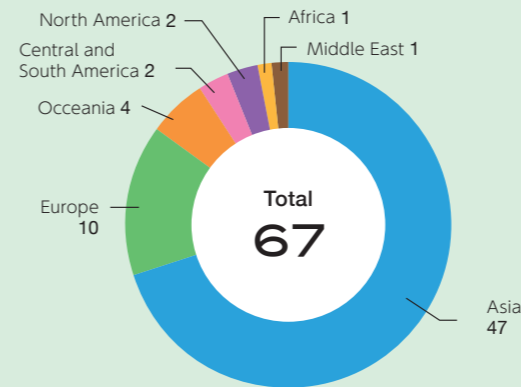
13

Number of International Students (By Faculty, Graduate School)

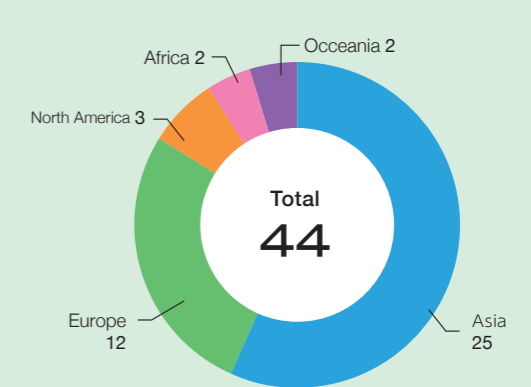


International Exchange Status (As of April 1, 2023)

Number of International university partnership agreement (23 Countries & Regions)



Number of International inter-department university partnership agreement (24 Countries & Regions)



Budget scale (Academic Year 2023)

Revenues* Expenses **51,074** million yen

Research in Cooperation with Private Sectors (Achievement) (Academic Year 2022)

Number **1,517** Projects

Amount **2,151** million yen

Area of land and building (As of May 1, 2023)

Area of land **5,509,850** m²
(proportion of leased land 93,299 m²)

Area of building **321,757** m²

University Library

Japanese Books **708,836** Books Foreign Books **228,637** Books

Total **937,473** Books (As of April 1, 2023)

Total Number of visitors **119,214** (Academic Year 2022)

University Hospital (Academic Year 2022)

Number of Beds **685** Beds

Cumulative total of hospitalized patients **191,084**

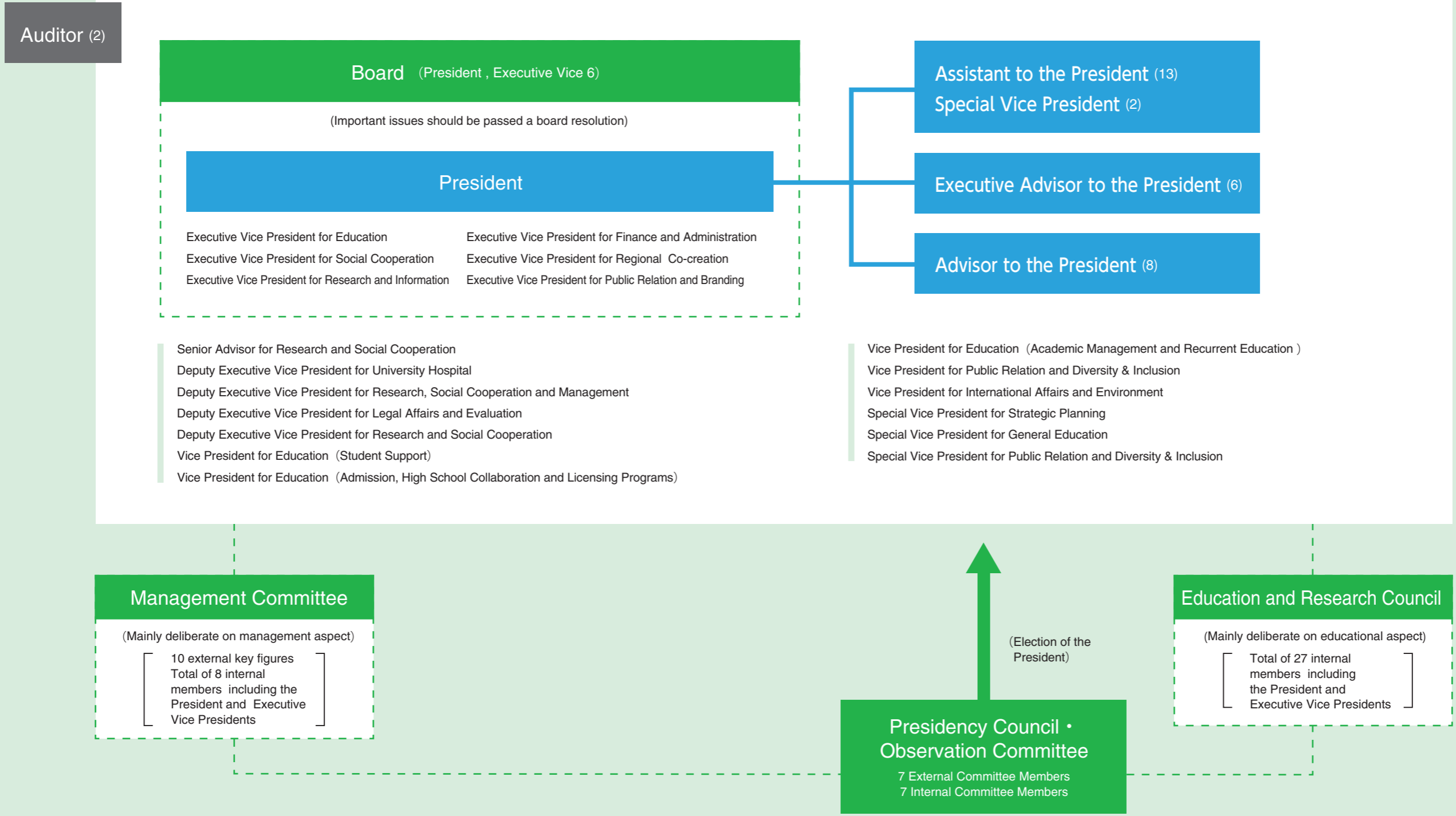
Cumulative total of outpatients **351,947**

Average number of hospitalized patients per day **523.5**

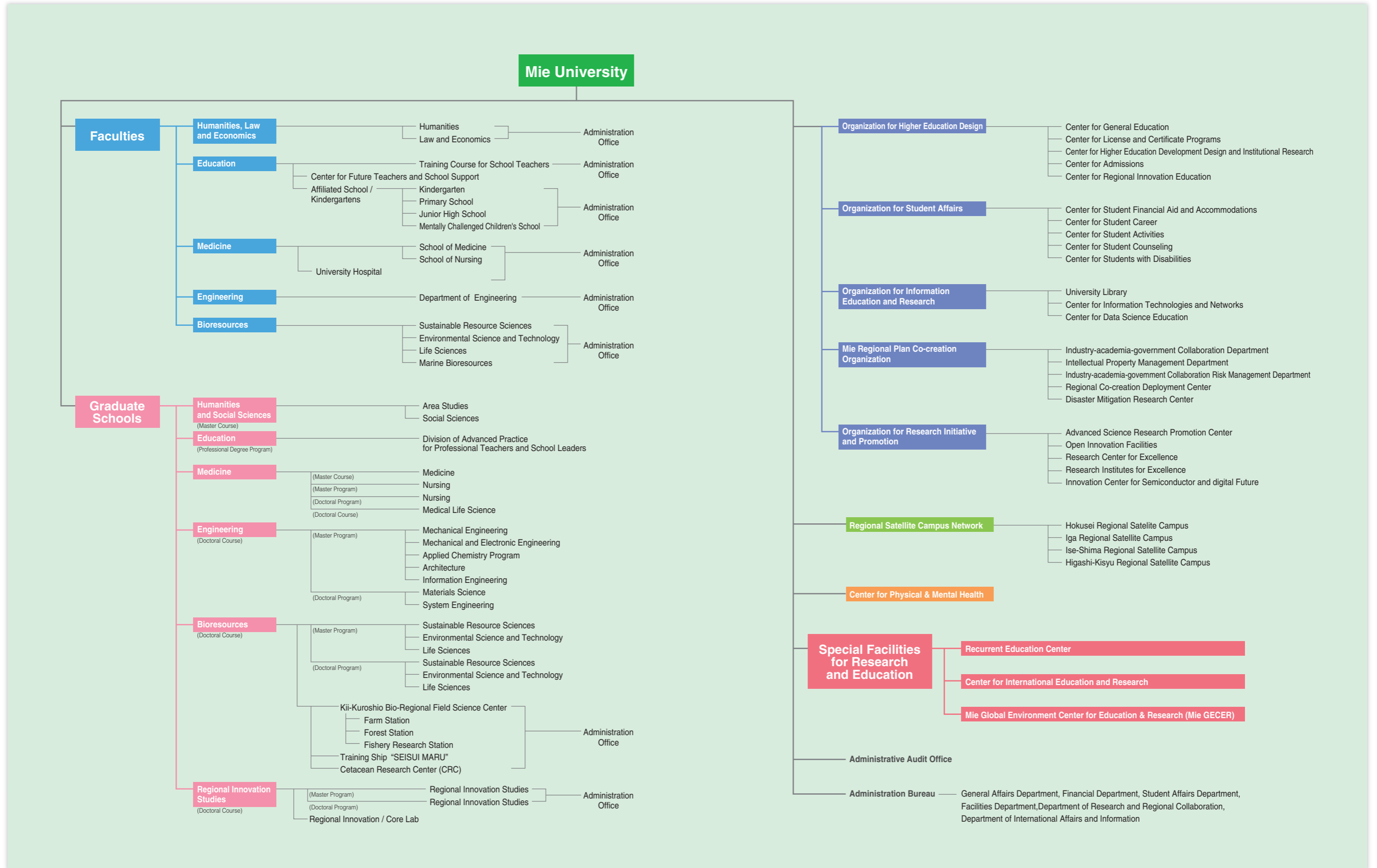
Average number of outpatients per day **1,448.3**

MIE UNIVERSITY

GOVERNING STRUCTURE

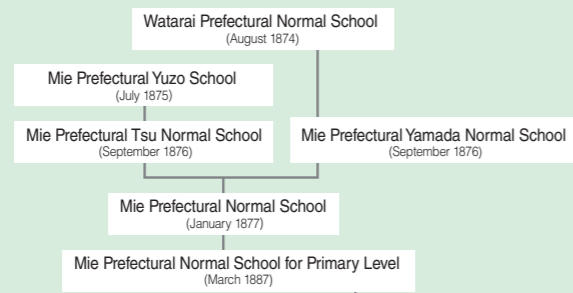


Operational Organization Chart



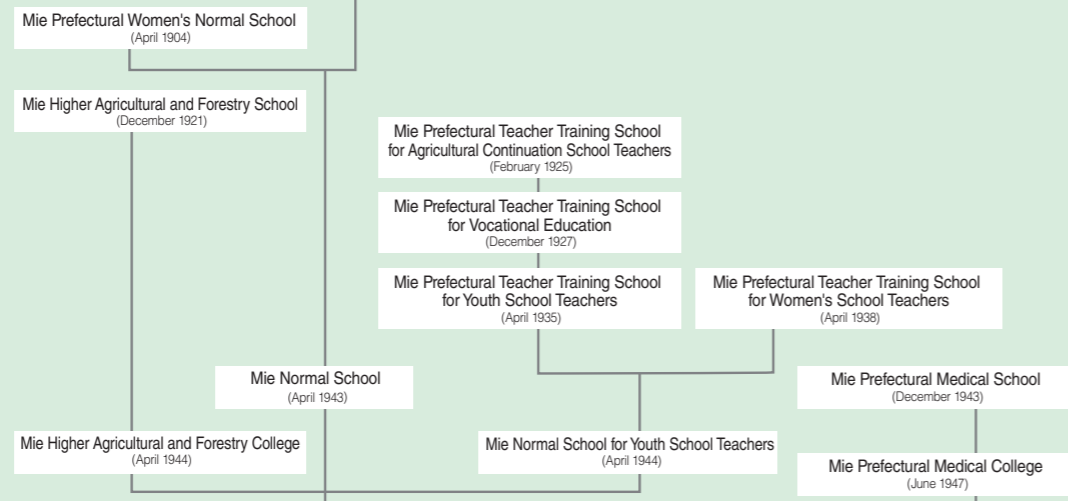
Historical chart

1874



Sansui Kaikan, Registered as a Cultural Property in Japan

1912



1945

1949



May 31, 1949	Mie University
May 31, 1949	Faculty of Liberal Arts (Elementary school teacher training course, Junior High School teacher training course) Faculty of Agriculture (Agriculture, Agricultural Engineering, Forestry, Food Processing)
May 31, 1949	University Library Faculty of Liberal Arts (Kindergarten, Elementary school, Junior High School, High school) Faculty of Agriculture (Experimental Farm, Experimental Forest)
April 1, 1951	Special Course (Agriculture)
March 31, 2009 Closed	
April 1, 1966	Graduate Schools of Agriculture (Master Course)
September 30, 1989 closed	
April 1, 1966 renamed	Faculty of Education
April 1, 1966	One-Year Graduate Course (Education)
March 31, 1989 closed	
April 1, 1966	Faculty of Education (A training course for teachers of schools for disabled children)
April 1, 1969	Faculty of Engineering (Mechanical Engineering, Electronic Engineering)
May 1, 1972 transferred	Faculty of Medicine (School of Medicine) (transferred from Mie Prefectural University)
May 1, 1972 transferred	Faculty of Fisheries (School of Fisheries) (transferred from Mie Prefectural University)
March 31, 1992 closed	
April 1, 1973	School for the Mentally Handicapped
October 1, 1973 transferred	University Hospital (transferred from Mie Prefectural University)
April 1, 1974	School of Nursing
March 31, 1991 closed	

April 1, 1975

April 1, 1976

April 18, 1977

April 1, 1978

April 1, 1979

March 31, 2003 closed

April 1, 1979 Attached Facility for Graduate School of Bioresources

April 1, 2006

April 1, 1979

April 1, 1983

May 21, 1987 reorganized

October 1, 1987

April 1, 1988

October 1, 1988

March 31, 2000 closed

April 1, 1989

April 1, 1991

April 1, 1992

April 1, 1995

April 1, 1996

April 11, 1999

March 31, 2015 closed

April 1, 2002 Attached Facility for Graduate School of Bioresources April 1, 2006

April 1, 2002 renamed in Japanese

April 1, 2002

April 1, 2004

May 26, 2004

April 1, 2005

April 1, 2006

April 1, 2006

April 1, 2007 renamed

April 1, 2007 renamed

March 31, 2014 closed

January 30, 2009

April 1, 2009

April 1, 2014

April 1, 2015

December 1, 2016

April 1, 2018 renamed

February 24, 2021

April 1, 2021

March 31, 2022 renamed

Graduate Schools of Medicine (Doctoral Course)

Graduate Schools of Fisheries (Master Course)

Education Technology Center

Graduate Schools of Engineering (Master Course)

Institute of Laboratory Animals

Training Ship "SEISUI MARU"

One-Year Graduate Course (Special Education)

Faculty of Humanities, Law and Economics

Center for Educational Research and Practice

Faculty of Bioresources (amalgamation of the Faculty of Agriculture and Faculty of Fisheries) Faculty of Bioresources (Experimental Farm, Experimental Forest, Fisheries Research Laboratory, Training Ship "SEISUI MARU")

Graduate Schools of Bioresources (Master Course)

College of Medical Sciences, Mie University

Graduate Schools of Education (Master Course)

Graduate Schools of Bioresources (Doctoral Course)

Graduate Schools of Humanities and Social Sciences (Master Course)

Graduate Schools of Engineering (Doctoral Course)

Common Education Center

Integrated Center for Educational Research and Practice

Kii-Kuroshio Bio-Regional Field Science Center (Experimental Farm, Experimental Forest, Fisheries Research Laboratory)

Graduate Schools of Medicine

Course of Nursing (Master Course)

National University Corporation Mie University

Liberal Arts Center

Graduate Schools of Medicine priority strengthening

Graduate Schools of Engineering priority strengthening

Graduate Schools of Bioresources priority strengthening (Training Ship "SEISUI MARU", Kii-Kuroshio Bio-Regional Field Science Center (Experimental Farm, Experimental Forest, Fisheries Research Laboratory))

Mentally Challenged Children's School

One-Year Graduate Course (Special Supporting Education and Special Major Department)

Training Ship "SEISUI MARU" The Second

Graduate Schools of Regional Innovation Studies

College of Liberal Arts and Sciences (Division of Foundational Liberal Arts and Sciences, Division of Comprehensive Liberal Arts and Sciences)

Center for Future Teachers and School Support

Cetacean Research Center (CRC)

College of Liberal Arts and Sciences

Kii-Kuroshio Bio-Regional Field Science Center (Fishery Research Station) (Moved from Shima City to Toba City)

Division of Advanced Practice for Professional Teachers and School Leaders

Liberal Arts Center (a part of Organization for Higher Education Design)



Sansui Hall

2004

2023

Administrative Staff

Board

President	ITO, Masaaki
Executive Vice President for Education	TSURUHARA, Kiyoshi
Executive Vice President for Social Cooperation	SAKAI, Toshinori
Executive Vice President for Research and Information	YOSHIOKA, Motoi
Executive Vice President for Finance and Administration	KINOSHITA, Takahiro
Executive Vice President for Regional Co-creation	NISHIOKA, Keiko
Executive Vice President for Public Relation and Branding	TANAKA, Risa
Auditor General for Business Operations	HATTORI, Masaaki
Auditor for Finance/Part-time	OGAWA, Yuka

Senior Advisor

Senior Advisor for Research and Social Cooperation	OGATA, Masato
--	---------------

Deputy Executive Vice President

Deputy Executive Vice President for University Hospital	IKEDA, Tomoaki
Deputy Executive Vice President for Research, Social Cooperation and Management	SAKUMA, Hajime
Deputy Executive Vice President for Legal Affairs and Evaluation	ONISHI, Yasumitsu
Deputy Executive Vice President for Research and Social Cooperation	IMANISHI, Nobuyuki

Vice President

Vice President for Education(Student Support)	TOGASHI, Kenji
Vice President for Education(Admission, High School Collaboration and Licensing Programs)	FUJITA, Tatsuo
Vice President for Education(Academic Management and Recurrent Education)	KOBAYASHI, Issei
Vice President for Public Relation and Diversity & Inclusion	MURATA, Mariko
Vice President for International Affairs and Environment	KANEKO, Satoshi

Special Vice President

Special Vice President for Strategic Planning	NISHIMURA, Norihiro
Special Vice President for General Education	OHNO, Ken
Special Vice President for Public Relation and Diversity & Inclusion	MORIWAKI, Yumiko

Assistant to the President

Assistant to the President for Student Support	NAGAYA, Yuichi
Assistant to the President for Admission	IWASAKI, Yasuhiko
Assistant to the President for General Education	OOI, Atsushi
Assistant to the President for Semiconductor Industry-academia-government collaboration	MIYAKE, Hideto
Assistant to the President for Research Promotion	YAMAZAKI, Hidetoshi
Assistant to the President for Social Cooperation	KATO, Takaya
Assistant to the President for Social Cooperation(Risk and IP Management)	KANO, Mikihito
Assistant to the President for Physical & Mental Health	KOBAYASHI, Yoshinao
Assistant to the President for Planning and Management	KUMAGAI, Ken
Assistant to the President for Information	YAMAMORI, Kazunori
Assistant to the President for International Affairs	WANG, XIULUN
Assistant to the President for Public Relations	MATSUDA, Yuko
Assistant to the President for Design	OKADA, Hiroaki

Special Assistant to the President

Special Assistant to the President for Safety Management	NAKAGAWA, Katsumi
Special Assistant to the President for Safety Management	FUKUNAGA, Wakako

Executive Advisor to the President

Executive Advisor to the President	UCHIDA, Atsumasa
Executive Advisor to the President	KUSUI, Yoshiyuki
Executive Advisor to the President	KOMADA, Yoshihiro
Executive Advisor to the President	TAKEDA, Kan
Executive Advisor to the President	TSURUOKA, Shinji
Executive Advisor to the President	TOYODA, Nagayasu

Advisor to the President

Advisor to the President	ISHIGAKI, Eiichi
Advisor to the President	ITO, Kimiaki
Advisor to the President	UMEKAWA, Hayato
Advisor to the President	SHIDA, Yoshihiro
Advisor to the President	TAKAGI, Junichi
Advisor to the President	MUKAI, Hiromitsu
Advisor to the President	MURATA, Yoshimasa
Advisor to the President	WATANABE, Yoshihiko

Management Committee

(External Committee Members)

President, The Hyakugo Bank, Ltd.	ITO, Toshiyasu
President, Asahi University	OHTOMO, Katsuyuki
Mayor of Kumano City	KAWAKAMI, Kanji
Mayor of Suzuka City	SUEMATSU, Noriko
President, MIE TOYOTA MOTOR CO.,LTD.	TAKEBAYASHI, Noriaki
Director, Mie Prefectural School Chiefs Association	TSUJI, Naruhisa
Mie Medical Association Chair	NII, Shigeru
Vice Governor of Mie Prefecture	HIROTA, Keiko
Former Ambassador Extraordinary and Plenipotentiary of Serbia and Montenegro	MARUYAMA, Junyuchi
President, NTT MEDIASUPPLY CO., LTD.	YOKOYAMA, Keiko

(Internal Committee Members)

President	ITO, Masaaki
Executive Vice President for Education	TSURUHARA, Kiyoshi
Executive Vice President for Social Cooperation	SAKAI, Toshinori
Executive Vice President for Research and Information	YOSHIOKA, Motoi
Executive Vice President for Finance and Administration	KINOSHITA, Takahiro
Executive Vice President for Regional Co-creation	NISHIOKA, Keiko
Executive Vice President for Public Relation and Branding	TANAKA, Risa
Deputy Executive Vice President for University Hospital	IKEDA, Tomoaki

Education and Research Council

President	ITO, Masaaki
Executive Vice President for Education	TSURUHARA, Kiyoshi
Executive Vice President for Social Cooperation	SAKAI, Toshinori
Executive Vice President for Research and Information	YOSHIOKA, Motoi
Executive Vice President for Finance and Administration	KINOSHITA, Takahiro
Executive Vice President for Regional Co-creation	NISHIOKA, Keiko
Executive Vice President for Public Relation and Branding	TANAKA, Risa
Deputy Executive Vice President for University Hospital	IKEDA, Tomoaki
Deputy Executive Vice President for Research, Social Cooperation and Management	SAKUMA, Hajime
Deputy Executive Vice President for Legal Affairs and Evaluation	ONISHI, Yasumitsu
Deputy Executive Vice President for Research and Social Cooperation	IMANISHI, Nobuyuki
Vice President for Education(Student Support)	TOGASHI, Kenji
Vice President for Education(Admission, High School Collaboration and Licensing Programs)	FUJITA, Tatsuo
Vice President for Education(Academic Management and Recurrent Education)	KOBAYASHI, Issei
Vice President for Public Relation and Diversity & Inclusion	MURATA, Mariko
Vice President for International Affairs and Environment	KANEKO, Satoshi
Dean, Faculty of Humanities, Law and Economics	FUJITA, Shinya
Dean, Faculty of Education	ITOH, Nobunari
Dean, Graduate School of Medicine	HORI, Hiroki
Dean, Graduate School of Engineering	MORI, Kazuo
Dean, Graduate School of Bioresources	MATSUMURA, Naoto
Dean, Graduate School of Regional Innovation Studies	SUWABE, Keita
Professor, Faculty of Humanities, Law and Sciences	TOHYAMA, Atsushi
Professor, Faculty of Education	AKIMOTO, Hiroto
Professor, Graduate School of Medicine	NOSAKA, Tetsuya
Professor, Graduate School of Engineering	KUBO, Masataka
Professor, Graduate School of Bioresources	KOBARA, Jun

Administration Bureau

Executive Director-General	KINOSHITA, Takahiro
Head, Administrative Audit Office	TANI, Hitoshi
Director, General Affairs and Planning Department	HARA, Shigemasa
Head, General Affairs Office	TAKANO, Masakazu
Head, General Planning Office	ITO, Toshihiro
Head, Personnel and Labor Office	ODA, Naomi
Director, Financial Department	OZAWA, Fumio
Head, Financial Planning Office	ISHIKAWA, Yuko
Head, Financial Management Office	HASEGAWA, Kazuya
Director, Student Affairs Department	MORIMOTO, Shuichi
Head, Educational Affairs Office	KORENAGA, Hiroshi
Head, Student Support Office	OHATA, Natsu
Head, Career Support Office	MATSUBARA, Yukishi
Head, Admission Office	OKABE, Tatsushi
Director, Facilities Department	MUKAI, Kazuhito
Head, Facility Planning Office	HASHIMOTO, Takeshi
Head, Facility Management Office	NISHIMURA, Kenji
Head, Facility Maintenance Office	SHIRAI, Takashi

Director, Department of Research and Regional Collaboration	OHHATA, Ayumu
Head, Research Promotion Office	KOBAYASHI, Yasuhisa
Head, Social Cooperation Management Office	KOMADA, Masahiko
Head, Promotion office for Regional Revitalization	OHHATA, Ayumu
Director, Department of International Affairs and Information	YAMANAKA, Setsuko
Head, Library Office	NAKAMURA, Kyoko
Head, DX and Management Information	YAMANAKA, Setsuko
Head, International Relations Office	TOMISHIMA, Yoshio

Faculty of Humanities, Law and Economics

Dean	FUJITA, Shinya
Vice Dean	TOYOFUKU, Yuji
Head, Office for Faculty of Humanities, Law and Economics	SASAOKA, Shuichi

Faculty of Education

Dean	ITOH, Nobunari
Vice Dean	MIYAKO, Kunihide
Vice Dean	MATSUURA, Naomi
Head, Office for Attached Schools, Faculty of Education	KAWAMURA, Toshio
Director, Integrated Center for Educational Research and Practice	OKANO, Noboru
Headmaster, Kindergarten	SUGISAWA, Kumiko
Headmaster, Primary School	YAMAMOTO, Yoshimi
Headmaster, Junior High School	YAMAGUCHI, Tsutomu
Headmaster, Mentally Challenged Children's School	NAKAGAWA, Katsumi

Graduate School of Medicine and Faculty of Medicine

Dean	HORI, Hiroki
Vice Dean	NARITA, Masaaki
Vice Dean	TAKAO, Motoshi

University Hospital

Director	IKEDA, Tomoaki
Vice Director	SAKUMA, Hajime
Vice Director	HIRAYAMA, Masahiro
Vice Director	MIZUNO, Shugo
Vice Director	SUZUKI, Hidenori
Vice Director/Director for School of Nursing	FUKUNAGA, Wakako
Vice Director	KANEKO, Toshihiro
Vice Director	DOHI, Kaoru
Vice Director	WATANABE, Masatoshi
Director, Pharmacy Division	IWAMOTO, Takuya
Director, General Affairs Office	ITO, Atsushi
Head, General Affairs Office	AO, Yasuyuki
Head, Management Office	NIWA, Akira
Head, Student Affairs Office	FUKUBA, Hirofumi
Head, Medical Affairs Office	TERAMAE, Toshiharu
Head, Medical Support Office	TSUGE, Satoshi

Graduate School of Engineering and Faculty of Engineering

Dean	MORI, Kazuo
Vice Dean	IKEURA, Ryojun
Head, Office of Graduate School & Faculty of Engineering	KOBAYASHI, Hiroshi

Graduate School of Bioresources and Faculty of Bioresources

Dean	MATSUMURA, Naoto
Vice Dean	KIMURA, Tetsuya
Vice Dean	HASHIMOTO, Atsushi
Head, Office for Graduate School & Faculty of Bioresources	TOGIYA, Motohiro
Director, Kii-Kuroshio Bio-regional Field Science Center	WATANABE, Kunio
Director, Training Ship "SEISUI MARU"	MAEKAWA, Yoichi
Director, Cetacean Research Center (CRC)	MATSUMURA, Naoto

Graduate School of Regional Innovation Studies

Dean	SUWABE, Keita
Vice Dean	AOKI, Masao
Vice Dean	MARUYAMA, Naoki
Head, Office for Graduate School of Regional Innovation Studies	SEKO, Kazuhiro

Organization for Higher Education Design

Director	TSURUHARA, Kiyoshi
----------	--------------------

Organization for Student Affairs

Director	TSURUHARA, Kiyoshi
----------	--------------------

Organization for Information Education and Research

Director	YOSHIOKA, Motoi
----------	-----------------

Mie Regional Plan Co-creation Organization

Director	SAKAI, Toshinori
----------	------------------

Organization for Research Initiative and Promotion

Director	YOSHIOKA, Motoi
----------	-----------------

Regional Satellite Campus Network

Director	SAKAI, Toshinori
----------	------------------

University Library

Director	YOSHIOKA, Motoi
----------	-----------------

Center for Physical & Mental Health

Director	KOBAYASHI, Yoshinao
----------	---------------------

Director for Each Center

Recurrent Education Center	KOBAYASHI, Issei
Center for International Education and Research	KANEKO, Satoshi
Mie Global Environment Center for Education & Research (Mie GECER)	KANEKO, Satoshi

Presidents

1st	OKAIDE, Yukio	May 31, 1949 - May 31, 1957
Acting	NAKANO, Seisaku	June 1, 1957 - Dec. 9, 1957
2nd	NOMURA, Takee	Dec. 10, 1957 - Dec. 9, 1966
Acting	KADOYA, Tatsujiro	Dec. 10, 1966 - Feb. 28, 1967
3rd	NODA, Tokichi	Mar. 1, 1967 - Feb. 28, 1970
Acting	IMACHI, Isamu	Mar. 1, 1970 - Mar. 16, 1970
4th	NODA, Tokichi	Mar. 17, 1970 - Nov. 8, 1971
Acting	IWAMOTO, Kiichi	Nov. 9, 1971 - June 30, 1972
Acting	SAKAKIBARA, Shingo	July 1, 1972 - Feb. 2, 1974
5th	MIKAMI, Yoshiki	Feb. 10, 1974 - Feb. 9, 1980
6th	IZAWA, Tadasu	Feb. 10, 1980 - Feb. 9, 1986
7th	TAKEDA, Susumu	Feb. 10, 1986 - Feb. 9, 1992
8th	TAKEMURA, Yasuo	Feb. 10, 1992 - Feb. 9, 1998
9th	YATANI, Ryuichi	Feb. 10, 1998 - Mar. 31, 2004
10th	TOYODA, Nagayasu	Apr. 1, 2004 - Mar. 31, 2009
11th	UCHIDA, Atsumasa	Apr. 1, 2009 - Apr. 1, 2015
12th	KOMADA, Yoshihiro	Apr. 1, 2015 - Mar. 31, 2021
13th	ITO, Masaaki	Apr. 1, 2021 -

Faculties and Graduate Schools / Institutes for Education and Research

Faculty of Humanities, Law and Economics/ Graduate School of Humanities and Social Sciences

Through education and research of the humanities and social studies, we develop student abilities to contribute towards the development of regional culture, explore ideas of what it means to be human and theories of social structures, and take initiatives in solving social problems.



Faculty of Humanities, Law and Economics (2 Departments · 4 Chairs/2 Courses)	
Departments	Chairs/Courses
Department of Humanities	Japanese Studies, Asian and Oceanian Studies, European and Mediterranean Studies, American Studies
Department of Law and Economics	Law and Politics Course, Contemporary Economics Course
Graduate School of Humanities and Social Sciences (2 Majors)	
Majors	
Area Studies Course	
Social Sciences Course	

Faculty of Education/Graduate School of Education

Taking advantage of comprehensive study in the Faculty of Education, students develop expertise in the humanities, social and natural sciences, education, and the professional skills of their respective fields.



Faculty of Education (1 Department/13 Courses)	
Department	Courses
Training Course for School Teachers	Language and Literature Education, Social Studies Education, Mathematical, Science Education, Music Education, Fine Arts Education, Health and Physical Education, Technology/Manufacturing Education, Home Economics Education, English Language Education, Special Support Education, Science of Early Childhood Education, School Education
Graduate School of Education (1 Major/2 Courses)	
Majors/Courses	
Professional Degree Program	Division of Advanced Practice for Professional Teachers and School Leaders School Management Skills Development Course, Educational Practice Development Course
Affiliated Faculty of Faculties	
Institution	Purpose and Research
Center for Future Teachers and School Support	We give guidance based on our support system, research, and feedback results on teacher training education and current teacher development. (Pre-service Teacher Division, School Support Division, In-service Teacher and Development Division, and General Support Office)

Graduate School of Medicine/Faculty of Medicine

Students develop a sense of social responsibility and ethics, creative and critical cognitive skills, and strive towards an advancement of human health and welfare which translate at local and global levels of society.



Graduate School of Medicine (Doctoral Program: 1 Major · 2 Divisions, Industry-Academic-Government Cooperation, Endowed Department) (Master Program : 1 Major · 2 Divisions, Industry-Academic-Government Cooperation, Endowed Department) (Master Program : 1 Major · 3 Divisions) (Doctoral Program: 1 Major · 3 Divisions)		
Majors	Divisions	Departments
Medical Life Sciences (Doctoral Program) Medicine (Master Program)	Basic Medicine Sciences	Histology and Cell Biology, Developmental and Regenerative Medicine, Biochemistry and Proteomics, Department of Biochemistry, Stem Cell and Developmental Biology, Molecular Physiology, Pathology and Matrix Biology, Oncologic Pathology, Integrated Pharmacology, Molecular and Cellular, Microbiology and Molecular Genetics, Immunology, Medical Zoology, Environmental and Molecular Medicine, Public Health and Occupational Medicine, Forensic Medicine and Sciences, Medical Education, Immunoregulation, Animal Functional, Medical Genomics and Proteomics, Department of Reproductive Biology
	Clinical Medicine Sciences	Cardiology and Nephrology, Hematology and Oncology, Gastroenterology and Hepatology, Pulmonary and Critical Care Medicine, Metabolism and Endocrinology, Neurology, Rheumatology, Family Medicine, Psychiatry, Pediatrics, Dermatology, Radiology, Hepatobiliary Pancreatic and Transplant Surgery, Gastrointestinal and Pediatric Surgery, Thoracic and Cardiovascular Surgery, Breast Surgery, Gynecologic Pelvic Surgery and Oncology, Neurosurgery, Musculoskeletal Surgery, Multimodality Therapy for Cancer, Nephro-Urologic Surgery and Andrology, Ophthalmology, Otorhinolaryngology, Head & Neck Surgery, Oral and Maxillofacial Surgery, Plastic Surgery, Anesthesiology, Emergency and Disaster Medicine, Rehabilitation Medicine, Department of Clinical Pharmaceutics, Department of Laboratory Medicine, Genomic Medicine and Genetic Counseling, General Medicine, General Internal Medicine, Neonatology, Child Medical Health and Development, Division of Health Promotion and Disease Prevention, Department of Clinical Oncogenomics, Department of Clinical Dysmorphology
	(Industry-Academic-Government Cooperation) Clinical Human Research Promotion and Drug Development	Human Research Promotion and Drug Development
	(Industry-Academic-Government Cooperation) Systems Pharmacology	Systems Pharmacology
	(Industry-Academic-Government Cooperation) Personalized Cancer Immunotherapy	Personalized Cancer Immunotherapy
	(Endowed Department) Dementia Prevention and Therapeutics	Dementia Prevention and Therapeutics
	(Endowed Department) Innovative Surgery	Innovative Surgery
	(Endowed Department) Orthopedics and Sports Medicine	Orthopedics and Sports Medicine
	(Endowed Department) Advanced Diagnostic Imaging	Advanced Diagnostic Imaging
	(Endowed Department) Advanced Cancer Treatment Studies	Advanced Cancer Treatment Studies
	(Endowed Department) Hematological Malignancies	Hematological Malignancies
	(Endowed Department) Neuroradiology	
	(Endowed Department) Advanced Treatment for Spinal Diseases	
	(Endowed Department) Public Health / Infectious Disease Control and Prevention	
	(Training plan for "cancer professionals" that will respond to diverse new needs) Radiation Oncology	Radiation Oncology
Majors	Divisions	Departments
Nursing (Master Program)	Fundamental Nursing	Nursing Education, Nursing Administration, Fundamental of Nursing
	Clinical Nursing	Oncology Nursing, Adult Health Nursing, Maternal Nursing, Child Health Nursing, Gerontological Nursing
	Community Health Nursing	Psychiatric Nursing, Home Care Nursing, Community Health Nursing
Nursing (Doctoral Program)	Nursing	Nursing Education, Fundamental Practical Nursing, Adult and Elderly Health Nursing, Maternal and Child Health Nursing, Psychiatry, Stress and Health Sciences, Community Health Nursing
Faculty of Medicine (2 Schools)		
Schools		
School of Medicine		
School of Nursing		

▶ Graduate School of Engineering/Faculty of Engineering

Students in the Graduate School and Faculty of Engineering develop a sense of social responsibility and ethics, creative and critical cognitive skills, and strive towards contributions for the harmonious coexistence of humans and nature through research on science and technology.



Graduate School of Engineering (Master Program : 5Departments/17 Chairs, Doctoral Program : 2Departments/5 Chairs)				
		Departments	Chairs	
Master Program		Mechanical Engineering	Robotics and Mechatronics, Advanced Materials and Processes, Mechanics and Physics of Materials, Environmental Energetics	
		Electrical and Electronic Engineering	Electrical System Engineering, Information and Communication Systems, Electronic Material Science and Technology, Physics Engineering	
		Applied Chemistry Program	Physical Chemistry, Inorganic and Analytical Chemistry, Organic Chemistry, Biochemistry	
		Architecture	Architecture	
		Information Engineering	Computer Science, Information Network, Intelligent System, Human Informatics	
Doctoral Program		Materials Sciences, Systems Engineering	Materials Property, Materials Chemistry, Electrical Information System, Design System, Recycling System Design	
Faculty of Engineering(1Departments/5Courses/17 Chairs)				
		Departments	Courses	Chairs
Under-graduate	Department of Engineering		Mechanical Engineering Program	Robotics and Mechatronics, Advanced Materials and Processes, Mechanics and Physics of Materials, Environmental Energetics
			Electrical and Electronic Engineering Program	Electrical System Engineering, Information and Communication Systems, Electronic Material Science and Technology, Physics Engineering
			Applied Chemistry Program	Physical Chemistry, Inorganic and Analytical Chemistry, Organic Chemistry, Biochemistry
			Architecture Program	Architecture
			Information Engineering Program	Computer Science, Information Network, Intelligent System, Human Informatics

▶ Graduate School of Bioresources/Faculty of Bioresources

With the coexistence of nature and mankind in mind, we established studies to explore the appropriate development and the utilization of bioresources.



Graduate School of Bioresources (Master Program : 3Divisions/9 Chairs, Doctoral Program : 3 Divisions/6 Chairs)			
		Divisions	Chairs
Master Program		Major in Sustainable Resource Sciences	Agrobiology, Forest Resources and Environmental Science, International Regional Resource Science
		Major in Environmental Science and Technology	Sustainable Earth and Environmental Sciences, Environment Oriented Information and System Engineerin, Irrigation, Drainage and Reclamation Engineering
		Major in Life Sciences	Biochemistry and Biotechnology, Marine Biotechnology, Marine Biology
Doctoral Program		Major in Sustainable Resource Sciences	Sustainable Resource System Sciences, Int'l Sustainable Resource Science
		Major in Environmental Science and Technology	Atmosphere and Sustainable Earth System Science, Atmosphere and Sustainable Earth System Science
		Major in Life Sciences	Applied Biological Chemistry, Marine Biological Science
Faculty of Bioresources (4 Divisions/9 Courses)			
		Divisions	Courses
Under-graduate		Department of Sustainable Resource Sciences	Course of Biology for Agriculture and Forestry, Course of Forest Resources and Environmental Science, Course of Glocal Resources Utilization
		Department of Environmental Science and Technology	Course of Sustainable Earth and Environmental Science, Course of Environment Oriented Information and System Engineering, Course of Irrigation Drainage and Reclamation Engineering
		Department of Life Science and Chemistry	Course of Biochemistry and Biotechnology, Course of Marine Biotechnology
		Department of Marine Bioresources	Course of Marine Bioresources
Affiliated Facilities of Graduate Schools			
		Institution	Purpose and Research
		Kii-Kuroshio Bio-Regional Field Science Center	Provides practical education and applied research opportunities on coexistence of human life and nature in the ecosystem that ranges from the Kii Peninsula to the Kuroshio Current.
		Farm Station	Manages practical education and applied research in agricultural studies.
		Forest Station	Manages practical education and applied research in forest resources and preservation.
		Fisheries Research Laboratory	Promote DX of the ocean, introduce IT and AI in fishery production, utilize big data regarding the fishery environment, and practice education and research facilities for fishery science, marine biology, and preservation of the ocean environment.
		Graduate School of Bioresources Cetacean Research Center (CRC)	A research facility designed to advance a full range of basic and applied research on sustainable use of cetaceans as a marine bioresource.
		Graduate School of Bioresources Training Ship "SEISUI MARU" (Base for education-related joint use)	Conducts practical/experimental survey research on fishery science/biological oceanography/ocean environment.
		Graduate School of Regional Innovation Studies Core-Lab	Cultivating highly-specialized professionals and sending them into society and conducting collaborative researches among government, industry, and academia.

▶ Graduate School of Regional Innovation Studies

The Graduate School of Regional Innovation Studies was established in order to bridge the gap which exists in contemporary industrial society — and especially in local industrial circles such as those in the Mie region — between social needs and graduate school education, and to foster the development of individuals with the capabilities to help halt regional decline. The school cultivates, and sends out into regional society, research and development professionals who are skilled in project management as well as social entrepreneurs capable of generating something out of nothing in their local communities.



Graduate School of Regional Innovation Studies (2 Divisions/4 Units)			
		Divisions	Units
Master Program	Regional Innovation Studies	Engineering Innovation Unit, Bioinnovation Unit, Social Innovation Unit	
Doctoral Program	Regional Innovation Studies	Regional Development Unit	

▶ Organization for Higher Education Design

In collaboration and cooperation with various departments and other bodies, the Organization for Higher Education Design carries forward the creation and development of various educational activities with the aim of achieving the educational goals of Mie University, as well as support various activities aimed at ensuring the quality of education. To achieve these objectives, four centers have been established within the Organization to engage in education and learning management with the aim of realizing student-oriented education.

· Center for General Education · Center for License and Certificate Programs · Center for Higher Education Development Design and Institutional Research · Center for Admissions · Center for Regional Innovations Education

▶ Organization for Student Affairs

In collaboration with various departments and relevant organizations within the university, the Organization for Student Affairs provides support for students, based on "Mie University's Basic Policy for Supporting Students," "Mie University's Policy for Career Education," and "Mie University's Basic Policy for Supporting Students with Handicaps." We support students by setting policies for each of the five centers set up within the organization and student support (peer support) by the students themselves.

· Center for Student Financial Aid and Accommodations · Center for Student Career · Center for Student Activities · Center for Student Counseling · Center for Students with Disabilities

▶ The Organization for Information Education and Research

The Organization for Information Education and Research carries forward, in collaboration and cooperation with various departments and other bodies, education and research related to information carried out by Mie University, as well as collecting and providing academic information resources, and preparing and enhancing the environment of the information infrastructure. There are three centers, described below, in the Organization. (University Library)

The University Library serves the three core functions of supporting research, supporting study, and contributing to the regional community. Together with the adjacent Mie Environmental & Information Platform, the University Library provides a venue for acquiring, creating, and sharing knowledge. (Center for Information Technologies and Networks)

The Center for Information Technologies and Networks supports education and research by managing and operating a wide variety of equipment, ranging from education systems and various servers to the campus network that is connected to the internet. The Center also provides the foundation for network security. (Center for Data Science Education)

The purpose of the Center is to promote Mie University's data science education for information literacy, by collaborating with regional society, with the Center for Mathematical and Data Science as the base.

▶ Mie Regional Plan Co-creation Organization

This organization aims to foster individuals capable of putting a wealth of skills into practice in local communities and to raise the value of research outputs, as well as to support various activities that contribute to the advancement of society, in line with Mie University's goal of growing together with the region in which it is located, as a university that co-creates with local communities.

· Industry-academia-government Collaboration Department · Intellectual Property Management Department · Industry-academia-government Collaboration Risk Management Department · Regional Co-creation Deployment Center · Disaster Mitigation Research Center

▶ Organization for Research Initiative and Promotion

This organization aims to support and advance a diverse range of research activities, in line with Mie University's goal of growing together with society.

· Advanced Science Research Promotion Center · Open Innovation Facilities · Research Center for Excellence · Research Institutes for Excellence · Innovation Center for Semiconductor and Digital Future

▶ Regional Satellite Campus Network

The Organization treats the entire Mie Prefecture as the education and research field of Mie University, and has four satellite campuses: Hokusei Regional Satellite Campus, Iga Regional Satellite Campus, Ise-Shima Regional Satellite Campus, and Higashi-Kishu Regional Satellite Campus with diverse regional characteristics. Through collaboration and cooperation with the municipal government, educational institutions, and other bodies, an activity base with abundant characteristic features has been established at each regional satellite campus, and teachers and students carry out field work and other practical educational and research activities. Furthermore, these four satellite campuses function as a hub for connecting the University with local companies and the municipal government, enabling them to not only increase the educational and research capabilities of Mie University, but also contribute to revitalizing the region and cultivating human resources for the region, while undertaking university-wide efforts for such actions as resolving issues, by discovering and sharing local issues, and carrying out joint research and joint projects, and other initiatives.

▶ Institutes for Education and Research

● Recurrent Education Center

Society today is changing at a whirlwind pace and the future is unpredictable, so even working adults need to acquire new knowledge and skills. In order to provide opportunities for such working adults to continue learning throughout their lives, Mie University has established the Recurrent Education Center. The Center custom-designs and delivers recurrent education programs tailored to the needs of companies and local government authorities in the Mie region, and also plans to develop ready-made programs for individual learners. Moreover, the Center develops and implements ready-made recurrent education programs in high-demand areas such as ICT and digital transformation (DX).

● Center for International Education and Research

The Center was established with the aim of developing human resources that are capable of contributing to resolving international issues and of contributing to the internationalization of Mie University and the region through international exchange projects and international education. The Center carries out various initiatives, such as conclusion of academic exchange agreements with universities overseas, study abroad programs for students, foreign language training, Japanese language education to students from overseas, job-hunting support, international education to Japanese students, and support for international activities by the university's departments.

● Mie Global Environment Center for Educational & Research (Mie GECER)

Under the Environment & SDGs Policy of Mie University, this Center promotes education, research and environmental conservation, as well as pursuing a variety of environmental activities including initiatives toward the reduction of carbon dioxide and other greenhouse gas emissions and the realization of a carbon-neutral society. The Environmental Management System (EMS) at the Kamihama Campus (excluding the University Hospital) has been confirmed compliant with the International Standard ISO14001:2015, with ISO certification renewed on November 19, 2022 (the initial certification was obtained in November 2007).

▶ Center for Physical & Mental Health

Provides specialized services to maintain and improve the health of students, faculty and staff members. Doctors, nurses, public health nurses and counselors (licensed psychologists) deal with mental illnesses and physiological stress, as well as physical illnesses. The Center also provides the University community with services including first aid, regular and ad hoc medical examinations, and issuance of medical certificates.



Office for Promoting

Institution	Purpose and Research
Office for Promotion of Museums and University Cooperation	Develops regional and research networks by promoting organized cooperation and collaboration with museums.
Diversity & Inclusion Promotion Office	Following the Mie University Declaration of Diversity & Inclusion in December 2022, the University formulated and released a strategy and action plan for advancing diversity and inclusion. As a result, it has established systems for developing an education, research, and working environment free from discrimination, achieving a healthy work-life balance, and reflecting the opinions of diverse stakeholders in the University's decision-making processes. The Diversity & Inclusion Promotion Office liaises and cooperates with organizations both within and outside the University to implement a range of projects that contribute to the advancement of diversity and inclusion.

Other Institutions

Institution	Purpose and Research
Mie Environmental & Informational Platform:MEIPL	MEIPL is one of the academic commons * integrated with the University Library. This is a core facility of Mie University, which is aiming to be the most environmentally advanced university in the world, for sending out information regarding the process of building and formulating a low-carbon society. The first floor of the building is where environmental education and research takes place, and it is also has a space for community exchange; the entire second floor is dedicated to an open "Learning Commons;" and the third floor functions as "open school" style classrooms (PBL seminar rooms) with no walls on the hallway side. * Academic commons are places where people create and share knowledge by exchanging and collaborating with a wide range of information sources, including people and materials.
Center for Mathematical and Data Science (CeMDS)	The Center aims to contribute to the development of information technologies in regional society through data science education and human resources development. This is achieved through the education and training of human resources that have abilities in mathematics and data science (DS) by supporting the use, education, and studies of information communication technology (ICT) devices, such as mandatory laptop computers.

Mie University Research Centers

Centers for Research Excellence

As of June 1, 2023

No.	Name of Centers	Representatives
1	Advanced Battery Research Center	IMANISHI, Nobuyuki, Deputy Executive Vice President, Professor, Graduate School of Engineering
2	Research Center for Materials Science and Advanced Electronics Created by Singularity	MIYAKE, Hideto, Professor, Graduate School of Engineering

Centers for Priority Research

As of June 1, 2023

No.	Name of Centers	Representatives
1	Center for Research on Inclusive Regional Structure	FUKAI, Hideki, Professor, Faculty of Humanities, Law and Economics
2	Research Center for Curriculum Development to Solve Regional Issues in Mie	MIYAOKA, Kunihide, Professor, Faculty of Education
3	Microbiome Research Center	KOBAYASHI, Tetsu, Professor, Graduate School of Medicine
4	Research Center for Development of Recombinant VLP Vaccines	NOSAKA, Tetsuya, Professor, Graduate School of Medicine
5	Mie University Robotics Mechatronics Research Center for Symbiosis with Humans	IKEURA, Ryojun, Professor, Graduate School of Engineering
6	Advanced Research Center for Applications of Beyond-5G/6G Wireless Communication Technology	MURATA, Hiroshi, Professor, Graduate School of Engineering
7	Regional Decarbonization Biomass Research Center	NONAKA, Hiroshi, Professor, Graduate School of Bioresources
8	Research Center for Innovative Technologies for Next-generation Fisheries	MATSUDA, Hirokazu, Professor, Graduate School of Bioresources
9	Cannabis Research Center	SUWABE, Keita, Professor, Graduate School of Regional Innovation Studies

Research Center

As of June 1, 2023

No.	Name of Centers	Representatives
1	Mie University Medical Zebrafish Research Center	INOUE, Takahiro, Professor, Graduate School of Medicine
2	Mie University Onco-cardiology Research Center	IMANAKA, Kyoko, Professor, Graduate School of Medicine
3	Mie University Research Center for Intractable Diseases	GABAZZA EC., Professor, Graduate School of Medicine
4	Center of Lateral Laboratory Associations in Bioengineering	SHIMAOKA, Kaname, Professor, Graduate School of Medicine
5	Zebrafish Drug Screening Center	SHIMADA, Yasuhito, Associate Professor, Graduate School of Medicine
6	Mie University Research Center for Cilia and Diseases	NISHIMURA, Yuuhei, Professor, Graduate School of Medicine
7	Mie University Research Center for Matrix Biology	HASEGAWA, Masahiro, Associate Professor, Graduate School of Medicine
8	Mie University Center for Comprehensive Cancer Immunotherapy	MIYAHARA, Yoshihiro, Associate Professor, Graduate School of Medicine
9	Inflammatory Skin Disease Research Center	YAMANAKA, Keiichi, Professor, Graduate School of Medicine
10	Mie University Research Center for Intractable Diseases	OKAMOTO, Ryuji, Professor, University Hospital
11	Center for Congenital Heart Disease and Kawasaki Disease in Mie University	MITANI, Yoshihide, Professor, University Hospital
12	DX-AI Innovation Center for Regional Development (DIReD)	OKUHARA, Shun, Associate Professor, Graduate School of Engineering
13	Research Center for Hydrogen Energy and Environment	KANEKO, Satoshi, Professor, Graduate School of Engineering
14	Mie University Next Generation ICT Research Center	KAWACHI, Akinori, Professor, Graduate School of Engineering
15	Mie University Soft Matter Chemistry Research Center	TORIKAI, Naoya, Professor, Graduate School of Engineering
16	Data-Science Research Center for Material, Quantum, and Measurement Technologies	NAKAMURA, Kohji, Professor, Graduate School of Engineering
17	Mie University Energy and Environment Engineering Research Center	HIROTA, Masafumi, Professor, Graduate School of Engineering
18	Mie University Seaweed Biorefinery Research Center	SHIBATA, Toshiyuki, Associate Professor, Graduate School of Bioresources
19	Smart Cell Innovation Research Center	TAMARU, Yutaka, Professor, Graduate School of Bioresources
20	Tree Health Research Center	NAKASHIMA, Chiharu, Professor, Graduate School of Bioresources

Number of Staff Members

As of May 1, 2023

Divisions	Classification	President	Trustees	Auditors	Teaching Staff				Total	Teachers at Affiliated Schools	Other Staff	Total	Grand Total
					Professors	Associate Professors	Associate Professors (Lecturers)	Assistant Professors					
President, Trustees, Auditors		1	6 (2)	2 (1)					9 (3)	0	0 (0)	9 (3)	
Administration Bureau									0 (0)	175 (64)	175 (64)	175 (64)	
Organization for Higher Education Design					3	4 (2)	2		9 (2)	2	2 (0)	11 (2)	
Organization for Student Affairs							3 (1)		3 (1)	0	0 (0)	3 (1)	
Organization for Information Education and Research						2 (1)		2	4 (1)	3 (1)	3 (1)	7 (2)	
Mie Regional Plan Co-creation Organization					1	3		3 (1)	7 (1)	0	0 (0)	7 (1)	
Organization for Research Initiative and Promotion					1	4		3	8 (0)	4 (2)	4 (2)	12 (2)	
Regional Satellite Campus Network									0 (0)	0	0 (0)	0 (0)	
Recurrent Education Center					1				1 (0)	0	0 (0)	1 (0)	
Center for International Education and Research					1 (1)	1 (1)		1	3 (2)	0	0 (0)	3 (2)	
Global Environment Center for Education & Research								1	1 (0)	0	0 (0)	1 (0)	
Center for Physical & Mental Health					2		1 (1)		3 (1)	2 (2)	2 (2)	5 (3)	
Faculty of Humanities, Law and Economics					36 (7)	22 (7)	6 (2)		64 (16)	10 (5)	10 (5)	74 (21)	
Graduate School of Education					3 (1)	4 (1)			7 (2)	0	0 (0)	7 (2)	
Faculty of Education					42 (7)	19 (6)	4 (2)		65 (15)	8 (2)	8 (2)	73 (17)	
Kindergarten									0 (0)	7 (6)	0	7 (6)	
Primary School									0 (0)	26 (9)	6 (5)	32 (14)	
Junior High School									0 (0)	26 (8)	0	26 (8)	
Mentally Challenged Children's School									0 (0)	29 (14)	0	29 (14)	
Graduate School of Medicine					46 (10)	33 (8)	14 (2)	37 (13)	130 (33)	5 (3)	5 (3)	135 (36)	
Faculty of Medicine					1 (1)		1 (1)	10 (3)	12 (5)	0	0 (0)	12 (5)	
University Hospital					10 (2)	22 (1)	45 (6)	139 (38)	216 (47)	952 (746)	952 (746)	1,168 (793)	
Graduate School of Engineering					36	42 (2)	3	15 (1)	96 (3)	27 (8)	27 (8)	123 (11)	
Graduate School of Bioresources					43 (2)	35 (5)		14 (2)	92 (9)	10 (4)	10 (4)	102 (13)	
Kii-Kuroshio Bio-Regional Field Science Center									0 (0)	20 (6)	20 (6)	20 (6)	
Farm Station					2	1			3 (0)	0	0 (0)	3 (0)	
Forest Station						2			2 (0)	0	0 (0)	2 (0)	
Fishery Research Station					1	1			2 (0)	0	0 (0)	2 (0)	
Cetacean Research Center (CRC)					1	1 (1)			2 (1)	0	0 (0)	2 (1)	
Training Ship "SEISUI MARU"						1		1	2 (0)	13	13 (0)	15 (0)	
Graduate School of Regional Innovation Studies					7 (1)	2 (1)			9 (2)	3 (1)	3 (1)	12 (3)	
Grand Total		1 (0)	6 (2)	2 (1)	237 (32)	199 (36)	79 (15)	226 (58)	750 (144)	88 (37)	1,240 (849)	1,328 (886)	2,078 (1,030)

*Two of the Trustees are part-time member. *One of the auditors is a part-time member. *Does not include those on administrative leave or childcare leave.
*The numbers in parentheses represent the numbers of female. *Numbers of teachers at Attached Schools includes the number of special appointed faculty.

Endowed Chairs and Industry-Academic-Government Cooperation Departments Endowed Research Divisions

Divisions	Classification	Number of Installations	Teaching Staff (Full-time)				Total
			Professors	Associate Professors	Associate Professors (Lecturers)	Assistant Professors	
Graduate School of Medicine	Endowed Chairs	9	4 (1)		2 (0)	4 (1)	10 (2)
	Industry-Academic-Government Cooperation	3	2 (0)			1 (0)	3 (0)
Faculty of Medicine	Endowed Chairs	10	7 (0)			7 (0)	14 (0)
University Hospital	Endowed Research Divisions	4				4 (1)	4 (1)
Total			13 (1)	0 (0)	2 (0)	16 (2)	31 (3)

*The numbers in parentheses represent the numbers of female staff.

Admission Capacity and Number of Students

*The numbers in parentheses represent the numbers of international students.

As of May 1, 2023

Classification	First Year				Second Year				Third Year				
	Admission Capacity	Male	Female	Total	Admission Capacity	Male	Female	Total	Admission Capacity	Male	Female	Total	
Faculty of Humanities, Law and Economics	Humanities	92	29	69 (1)	98 (1)	92	37 (1)	58	95 (1)	102	33(1)	69(1)	102 (2)
	Law and Economics	153	80 (1)	75	155 (1)	153	82	72	154	173	86	87	173
	Total	245	109 (1)	144 (1)	253 (2)	245	119 (1)	130	249 (1)	275	119(1)	156(1)	275 (2)
Faculty of Education	School Teachers Training	200	87	118	205	200	68	132	200	200	70	128	198
	Total	200	87	118	205	200	68	132	200	200	70	128	198
Faculty of Medicine	Medicine	125	85	40	125	125	78	50	128	125	73	52	125
	Nursing	80	7	73	80	80	3	79	82	90	2	75	77
	Total	205	92	113	205	205	81	129	210	215	75	127	202
Faculty of Engineering	Mechanical Engineering												
	Electrical and Electronic Engineering												
	Chemistry for Materials												
	Architecture												
	Information Engineering												
	Physics Engineering												
	Department of Engineering	400	348 (1)	64 (1)	412 (2)	400	342 (2)	54 (1)	396 (3)	430	370(4)	55(1)	425 (5)
Total	400	348 (1)	64 (1)	412 (2)	400	342 (2)	54 (1)	396 (3)	430	370(4)	55(1)	425 (5)	
Faculty of Bioreources	Sustainable Resource Sciences	70	36 (1)	39	75 (1)	70	39	34	73	73	43	32	75
	Environmental Science and Engineering	70	44	27	71	70	49	25	74	73	51	21	72
	Life Science and Chemistry	80	40	44	84	80	30	52	82	82	33	52	85
	Marine Bioreources	40	27	16	43	40	29	12	41	42	29	13	42
	Total	260	147 (1)	126	273 (1)	260	147	123	270	270	156	118	274
Grand Total	1,310	783 (3)	565 (2)	1,348 (5)	1,310	757 (3)	568 (1)	1,325 (4)	1,390	790(5)	584(2)	1,374 (7)	

Graduate Schools	Humanities and Social Sciences		15	6 (6)	5 (1)	11 (7)	15	14 (3)	5	19 (3)				
	Education	Master						1	1 (1)	2 (1)				
		Professional Degree Program	25	11	8	19	25	13	8	21				
	Medicine	Master (Medicine)	12	4	2	6	12	6	2	8				
		Master (Nursing)	11	2	2	4	11	2	19	21				
		Doctoral (Nursing)	3	1	1	2	3		3 (1)	3 (1)	3	1	13	14
		Doctoral (Medical Life Science)	45	27 (2)	11 (2)	38 (4)	45	37 (2)	8 (1)	45 (3)	45	34 (1)	19 (4)	53 (5)
	Engineering	Master	216	207(1)	31 (2)	238 (3)	216	231 (4)	24 (2)	255 (6)				
		Doctoral	16	10 (4)	4 (4)	14 (8)	16	5 (3)	4 (4)	9 (7)	16	24(9)	2 (2)	26 (11)
	Bioreources	Master	88	69 (8)	48 (6)	117 (14)	88	68 (6)	34 (1)	102 (7)				
		Doctoral	12	9 (4)	6 (4)	15 (8)	12	12 (7)	1	13 (7)	12	10(3)	7 (4)	17 (7)
	Regional Innovation Studies	Master	15	11	5 (2)	16 (2)	15	19 (1)	7 (1)	26 (2)				
		Doctoral	6	2	5 (1)	7 (1)	6	7 (2)	1 (1)	8 (3)	6	16	5 (1)	21 (1)
	Total		464	359 (25)	128 (22)	487 (47)	464	415 (28)	117 (12)	532 (40)	82	85(13)	46(11)	131 (24)

Schools Affiliated with Faculty of Education

As of May 1, 2023

Division	Prescribed Number	Number of Classes	Enrollment						
			First Year	Second Year	Third Year	Fourth Year	Fifth Year	Sixth Year	Total
Kindergarten	90	4	(3-year-old) 20	(4-year-old) 23	(5-year-old) 33	-	-	-	76
Primary School	630	18	93	101	99	98	99	96	586
Junior High School	432	12	142	142	141	-	-	-	425
Mentally Challenged Children's School	Primary School	18	3	3	3	3	3	3	18
	Junior High School	18	3	3	5	5	-	-	13
	Senior High School	24	3	5	7	8	-	-	20
Total	1,212	43	266	281	289	101	102	99	1,138

Number of Scholarship Grantees

As of March, 2023

Faculties	Classification	Enrollment	Japan Student Services Organization				Private Scholarship Fund Local & Regional Bodies	Grand Total	Ratio of Scholarship Grantees to Total Number of Students	
			Benefits	First-Class Loan (Interest-free)	Second-Class Loan (Interest-bearing)	Total				
Faculties	Humanities, Law and Economics	1,122	116	172	103	391	4	395	35.2%	
	Education	823	79	124	82	285	9	294	35.7%	
	Medicine	1,089	69	90	109	268	328	596	54.7%	
	Engineering	1,757	152	222	200	574	16	590	33.6%	
	Bioreources	1,116	84	147	111	342	8	350	31.4%	
	Graduate Schools	Humanities and Social Sciences (Master)	28		1	0	1	0	1	3.6%
Education (Master)		Master	9		0	1	1	0	1	11.1%
		Doctoral	39		4	2	6	1	7	17.9%
Medicine		Master(Medicine)	11		0	0	0	0	0	0.0%
		Master(Nursing)	32		1	0	1	1	2	6.3%
		Doctoral(Nursing)	20		1	0	1	0	1	5.0%
		Doctoral	215		2	1	3	0	3	1.4%
Engineering (Doctoral Course)		Master	492		141	8	149	0	149	30.3%
		Doctoral	46		3	0	3	0	3	6.5%
Bioreources (Doctoral Course)		Master	184		61	7	68	5	73	39.7%
		Doctoral	38		1	1	2	0	2	5.3%
Regional Innovation Studies		Master	40		5	0	5	0	5	12.5%
		Doctoral	35		1	1	2	0	2	5.7%
Total		7,096	500	976	626	2,102	372	2,474	34.9%	

* The numbers of students indicated above are as of May 1, 2022.
* The totals are cumulative numbers.



Numbers of 2023 Applicants and Entrants

As of April 1, 2023

Classification	Admission Capacity	Applicants			Examinees			Successful Candidates			Entrants				
		Male	Female	Total	Male	Female	Total	Male	Female	Total	Male	Female	Total		
Faculties	Humanities, Law and Economics	245	(14) 490	(8) 550	(22) 1,040	(10) 345	(6) 336	(16) 681	(3) 121	(2) 166	(5) 287	(1) 109	(1) 144	(2) 253	
	Education	200	386	521	907	262	363	625	91	123	214	87	118	205	
	Medicine	205	439	510	949	288	262	550	95	117	212	92	113	205	
	Engineering	400	(10) 1,476	(2) 265	(12) 1,741	(7) 933	(2) 170	(9) 1,103	(3) 380	(2) 71	(5) 451	(1) 348	(1) 64	(2) 412	
	Bioresources	260	(1) 586	(0) 467	(1) 1,053	(1) 380	(0) 276	(1) 656	(1) 162	(0) 141	(1) 303	(1) 147	(0) 126	(1) 273	
	Grand Total	1,310	(25) 3,377	(10) 2,313	(35) 5,690	(18) 2,208	(8) 1,407	(26) 3,615	(7) 849	(4) 618	(11) 1,467	(3) 783	(2) 565	(5) 1,348	
Graduate Schools	Humanities and Social Sciences (Master Course)	15	(13) 14	(3) 8	(16) 22	(13) 14	(2) 7	(15) 21	(6) 7	(1) 5	(7) 12	(6) 6	(1) 5	(7) 11	
	Education (Master Course)	25	12	10	22	11	10	21	11	10	21	11	8	19	
	Medicine	Master	12	(0) 4	(0) 2	(0) 6	(0) 4	(0) 2	(0) 6	(0) 4	(0) 2	(0) 6	(0) 4	(0) 2	(0) 6
		Master (Nursing)	11	(0) 3	(0) 3	(0) 6	(0) 2	(0) 3	(0) 5	(0) 2	(0) 2	(0) 4	(0) 2	(0) 2	(0) 4
		Doctoral (Nursing)	3	(0) 1	(0) 1	(0) 2	(0) 1	(0) 1	(0) 2	(0) 1	(0) 1	(0) 2	(0) 1	(0) 1	(0) 2
		Doctoral	45	(0) 17	(0) 9	(0) 26	(0) 17	(0) 8	(0) 25	(0) 17	(0) 8	(0) 25	(0) 17	(0) 8	(0) 25
	Engineering	Master	216	(0) 238	(1) 32	(1) 270	(0) 234	(1) 32	(1) 266	(0) 220	(1) 32	(1) 252	(0) 206	(1) 30	(1) 236
		Doctoral	16	(2) 8	(2) 2	(4) 10	(2) 8	(2) 2	(4) 10	(2) 8	(2) 2	(4) 10	(2) 8	(2) 2	(4) 10
	Bioresources	Master	88	(5) 84	(3) 50	(8) 134	(5) 80	(3) 48	(8) 128	(4) 70	(3) 47	(7) 117	(4) 65	(3) 45	(7) 110
		Doctoral	12	(1) 4	(3) 5	(4) 9	(1) 4	(3) 5	(4) 9	(1) 4	(3) 5	(4) 9	(1) 4	(3) 5	(4) 9
	Regional Innovation Studies	Master	15	(0) 15	(2) 5	(2) 20	(0) 14	(2) 5	(2) 19	(0) 11	(1) 4	(1) 15	(0) 10	(1) 4	(1) 14
		Doctoral	6	(0) 2	(0) 5	(0) 7	(0) 2	(0) 5	(0) 7	(0) 2	(0) 4	(0) 6	(0) 2	(0) 4	(0) 6
	Grand Total	464	(21) 402	(14) 132	(35) 534	(21) 391	(13) 128	(34) 519	(13) 357	(11) 122	(24) 479	(13) 336	(11) 116	(24) 452	

The numbers in parentheses represent the numbers of international students.

Numbers of 2023 Applicants and Entrants includes the Graduate School of Engineering (THE 5-YEAR INTEGRATED DOCTORAL EDUCATION PROGRAM) one students(male)

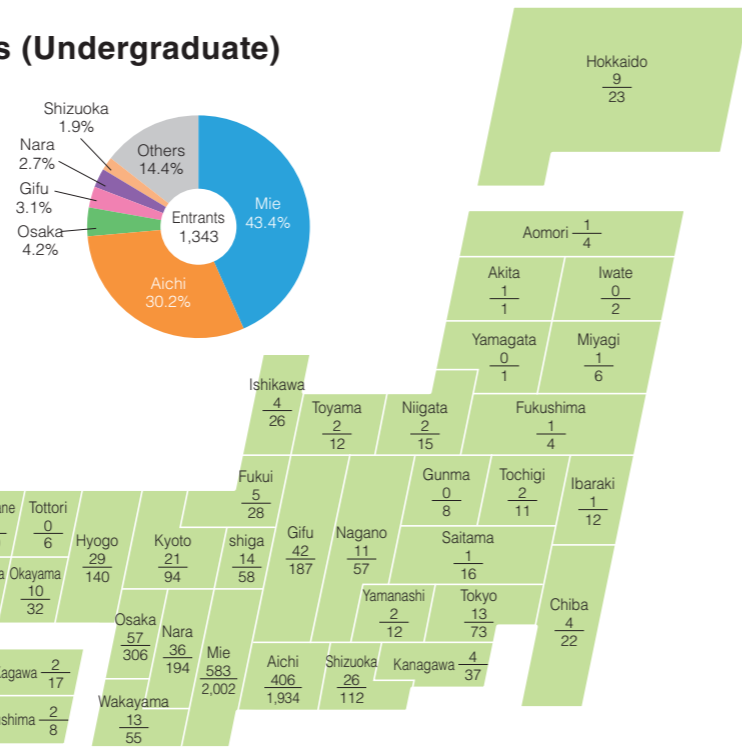
Applicants and Entrants by Prefectures (Undergraduate)

As of April 1, 2023

Grand Total	Entrants	1,343
	Applicants	5,655
Tokai District (Mie, Aichi, Gifu and Shizuoka Prefs.)	Entrants	1,057 (78.7% of grand total)
	Applicants	4,235 (74.9% of grand total)

*Excluding international students

Map: Entrants vs. Applicants by Prefecture
Upper: Entrants Lower: Applicants



Students Achieving the Proficiency
Others = Level of Upper Secondary School Graduates $\frac{0}{13}$, Overseas Returnees $\frac{1}{4}$, Graduates from recognized overseas institutions $\frac{0}{0}$, Overseas Schools $\frac{0}{0}$, Others $\frac{0}{0}$

Number of 2022 Graduates and Number of Degrees Conferred

Faculties

Faculties	Departments and Courses	Graduates			
		2022 Academic Year	Cumulative Total		
Humanities, Law and Economics	Humanities	(64) 96	(5,709) 10,622		
	Law and Economics	(76) 179			
	Subtotal	(140) 275			
Education	School Teachers Training	(130) 201	(10,990) 19,876		
	Subtotal	(130) 201			
Medicine	Medicine	(39) 126	(2,896) 6,820		
	Nursing	(75) 78			
	Subtotal	(114) 204			
Engineering	Department of Engineering	(59) 371	(1,599) 17,279		
	Mechanical Engineering	(0) 9			
	Electrical and Electronic Engineering	(0) 11			
	Chemistry for Materials	(0) 2			
	Architecture	(2) 8			
	Information Engineering	(0) 7			
	Physics Engineering	(0) 3			
	Subtotal	(61) 411			
	Bioresources	Sustainable Resource Sciences		(28) 71	(3,404) 8,646
		Environmental Science and Technology		(23) 72	
Department of Life Science and Chemistry		(51) 82			
Marine Bioresources		(13) 40			
Subtotal		(115) 265			
(Previous) Agriculture	—	(222) 6,978			
(Previous) Fisheries	—	(56) 944			
Total (1)	(560) 1,356	(24,876) 71,165			

The numbers in parentheses represent the numbers of females.

One-Year Graduate Courses and Special Course

Divisions	Graduates	
	2022 Academic Year	Cumulative Total
One-Year Graduate Courses	Special Needs Education	(53) 74
	(Previous) Special Education	(197) 352
	(Previous) Agriculture	(19) 78
Special Course	Agriculture	(18) 609
	Total (3)	(287) 1,113
Grand Total (1) + (2) + (3)	(28,039) 86,838	

The numbers in parentheses represent the numbers of females.

College of Medical Sciences

Department	Graduates	
	2022 Academic Year	Cumulative Total
Nursing	(704) 715	

The numbers in parentheses represent the numbers of females.

Graduate Schools

Graduate Schools	Courses	Graduates	
		2022 Academic Year	Cumulative Total
Humanities and Social Sciences	Master Course	(8) 9	(242) 464
	Master Course	(4) 6	(522) 1,128
Education	Professional Degree Program	(4) 17	(26) 77
	Master Course	(1) 1	(269) 427
Medicine	Master Program	(8) 10	(39) 44
	Doctoral Course	(16) 40	(246) 1,443
	Doctoral Program	(3) 3	(6) 6
Engineering	Master Program	(19) 224	(499) 5,505
	Doctoral Program	(5) 9	(45) 362
Bioresources	Master Program	(33) 80	(792) 2,776
	Doctoral Program	(3) 8	(92) 349
Regional Innovation Studies	Master Program	(8) 14	(40) 142
	Doctoral Program	2	(8) 36
Engineering	Master Course	—	(31) 1,164
Bioresources	Master Course	—	(6) 152
(Previous) Agriculture	Master Course	—	(12) 378
(Previous) Fisheries	Master Course	—	(1) 107
Total (2)		(112) 423	(2,876) 14,560

The numbers in parentheses represent the numbers of females.

Number of Degrees Conferred

Special Fields	Master Degree		Doctoral Degree		
	2022 Academic Year	Cumulative Total	2022 Academic Year	Cumulative Total	
Humanities	(3) 3	(139) 237	Medical Science	By Completing the Course (16) 40	(246) 1,443
	(5) 6	(103) 227		By Submitting Thesis (5) 11	(113) 935
Social Science	(4) 6	(52) 1,128	Nursing	By Completing the Course (3) 3	(6) 6
	(4) 17	(26) 77		By Submitting Thesis (2) 0	(39) 39
Education	(8) 10	(192) 207	Philosophy	By Completing the Course (3) 10	(100) 385
	(19) 224	(530) 6,669		By Submitting Thesis (2) 5	(20) 115
Master of Education	(33) 80	(798) 2,928	Total	(34) 78	(532) 3,285
	(8) 14	(40) 142		(1) 107	
Medicine	—	(12) 378	(Previous) Agriculture	—	
	—	(1) 107	(Previous) Fisheries	—	
Total	(85) 361	(2,479) 12,364			

The numbers in parentheses represent the numbers of females.

※1 : The cumulative total of degrees conferred is the total graduates in the previous master course of the Engineering which is 1,164 (31) and the current master program of the Engineering.

※2 : The cumulative total of degrees conferred is the total graduates in the previous master course of the Bioresources which is 152 (6) and the current master program of the Bioresources.

※3 : The cumulative total of degrees conferred is the total graduates in the previous master course of the Nursing which is 163 (153) and the current master program of the Medicine.

Career Paths of 2022 Graduates

The numbers in parentheses represent the numbers of females.

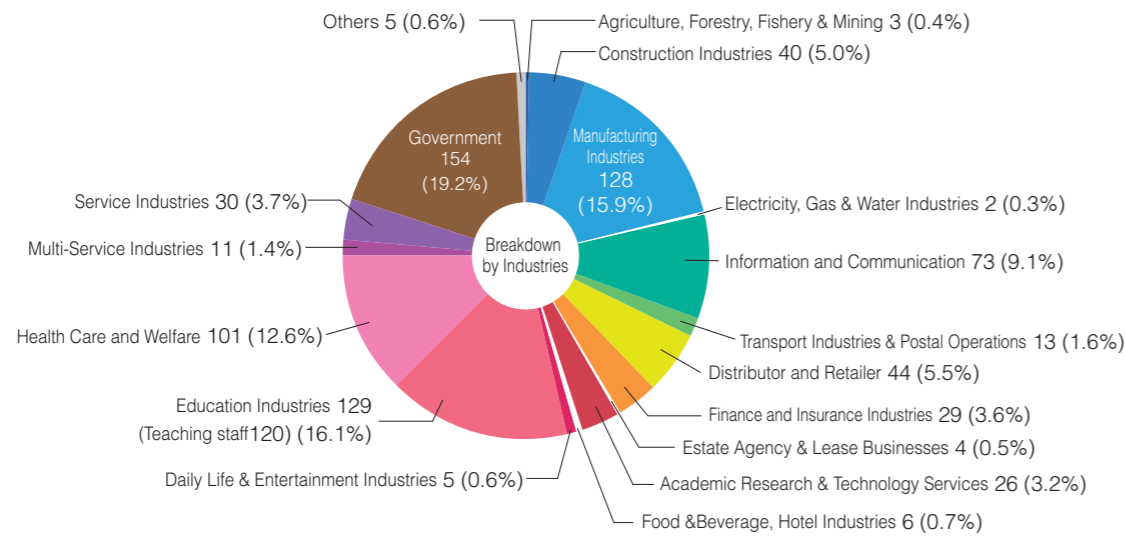
*Those who finished "Doctoral Course" or "Doctoral Program" include those who have completed course work, but not submitted a thesis yet.
*2 "Employed" includes those employed fewer than 30 hours per week for a term of at least one year (shortened work hours), and those employed fulltime for terms of between one month and one year.

As of May 1, 2023

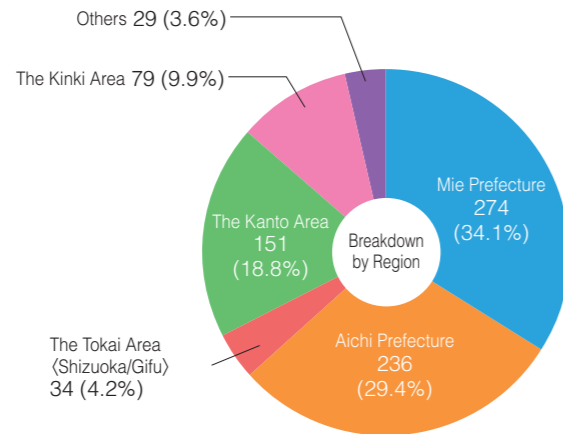
Table with columns: Classification, Number of Graduates, Entrants of Higher Grade Schools, Residents, Others, Employed, Agriculture, Forestry, Fishery & Mining, Construction Industries, Manufacturing Industries, Electricity, Gas & Water Industries, Information and Communications, Transport Industries & Postal Operators, Distributor and Retailer, Finance and Insurance Industries.

Table with columns: Region (Mie Prefecture, Aichi Prefecture, The Tokai Area (Shizuoka/Gifu), The Kanto Area, The Kinki Area, Others), Estate Agency & Lease Businesses, Academic Research & Technology Services, Food & Beverage, Hotel Industries, Daily Life & Entertainment Industries, Education Industries, Health Care and Welfare, Multi-Service Industries, Service Industries, Government, Others.

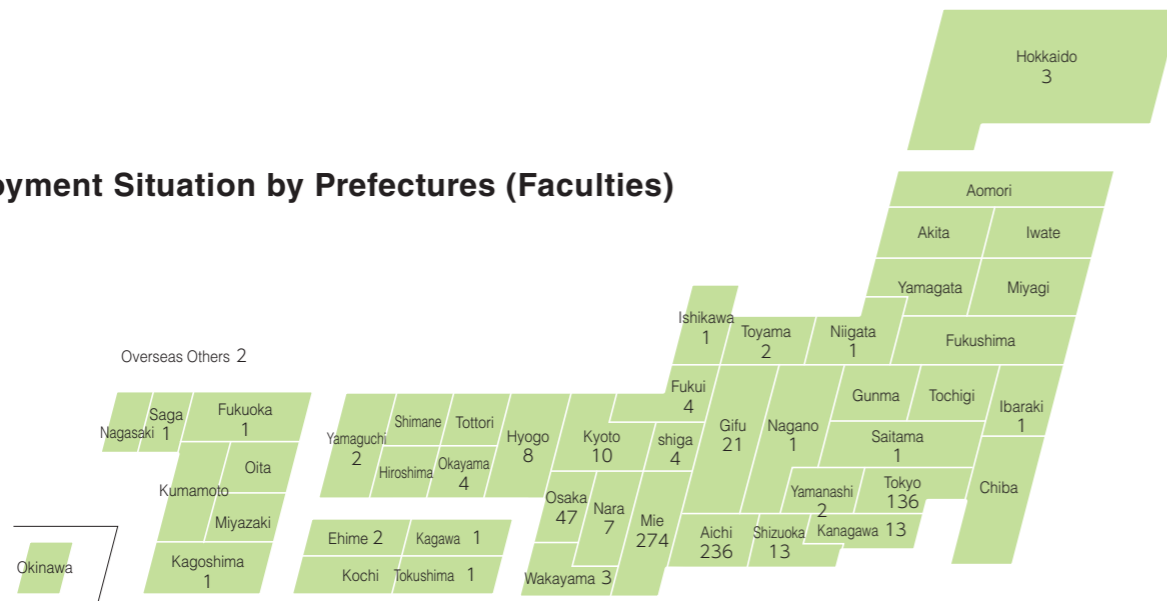
Employment Situation by Industries (Faculties)



Employment Situation by Region (Faculties)



Employment Situation by Prefectures (Faculties)



Number of International Students

Faculties / Graduate Schools

The numbers in parentheses represent the numbers of females.

As of May 1, 2023

Faculties / Graduate Schools	Undergraduate		Master Course		Doctoral Course		Total
	Degree Students	Non-Degree Students	Degree Students	Non-Degree Students	Degree Students	Non-Degree Students	
Faculty of Humanities, Law and Economics / Humanities and Social Sciences	12(3)	41(25)	10(1)	11(8)			74(37)
Faculty of Education / Education	0(0)	7(7)	1(1)	0(0)			8(8)
Faculty of Medicine / Medicine	0(0)	0(0)	0(0)	1(1)	18(12)	0(0)	19(13)
Faculty of Engineering / Engineering	20(4)	3(3)	9(4)	7(3)	26(10)	0(0)	65(24)
Faculty of Bioresources / Bioresources	2(1)	0(0)	21(7)	1(0)	22(8)	0(0)	46(16)
Graduate School of Regional Innovation Studies			4(3)	1(1)	5(3)	0(0)	10(7)
Center for International Education and Research					0(0)	0(0)	39(31)
Total	34(8)	90(66)	45(16)	21(13)	71(33)	0(0)	261(136)

Nationalities

The numbers in parentheses represent the numbers of females.

As of May 1, 2023

36 Countries & Regions		261(136)							
Countries & Regions	Undergraduate		Graduate		Center for International Education and Research		Total		
	Degree Students	Non-Degree Students	Degree Students	Non-Degree Students	Degree Students	Non-Degree Students		Degree Students	Non-Degree Students
Asia	China	9 (3)	28 (20)	49 (20)		11 (9)	24 (20)	121 (72)	
	Republic of Korea	14 (4)	5 (4)	1 (1)				20 (9)	
	Indonesia			18 (8)			1 (1)	19 (9)	
	Viet Nam	9 (0)		4 (1)			5 (5)	18 (6)	
	Taiwan		3 (1)	1 (0)	1 (1)		4 (2)	9 (4)	
	Malaysia	1 (0)	1 (1)	6 (5)				8 (6)	
	Thailand		2 (0)	4 (2)			1 (1)	7 (3)	
	Philippines			5 (2)				5 (2)	
	Bangladesh			3 (1)	1 (0)			4 (1)	
	Uzbekistan		2 (1)					2 (1)	
	Cambodia	1 (1)						1 (1)	
	Myanmar			1 (1)				1 (1)	
	Sri Lanka			1 (0)				1 (0)	
	Timor-Leste			1 (1)				1 (1)	
Africa	Ghana			4 (2)				4 (2)	
	Zambia			3 (1)				3 (1)	
	Egypt			3 (2)				3 (2)	
	Algeria			1 (0)				1 (0)	
	Republic of Benin			1 (0)				1 (0)	
	Kenya			1 (0)				1 (0)	
	Mozambique			1 (0)				1 (0)	
	Tanzania			1 (0)				1 (0)	
	England		1 (0)					1 (0)	
	Spain				3 (1)			3 (1)	
Europe	Germany		5 (4)			4 (2)		9 (6)	
	France		2 (2)			4 (1)		6 (3)	
	Austria		1 (1)					1 (1)	
	Turkey		1 (1)					1 (1)	
	Bulgaria			1 (0)				1 (0)	
	Belarus					1 (1)		1 (1)	
Middle East	Syria			1 (0)				1 (0)	
	Mexico			1 (0)				1 (0)	
South and Central America	Paraguay			1 (1)				1 (1)	
	Papua New Guinea			1 (1)				1 (1)	
Oceania	Solomon Islands			1 (0)				1 (0)	
	Vanuatu			1 (0)				1 (0)	
Total	34 (8)	51 (35)	116 (49)	21 (13)	39 (31)	39 (31)	261 (136)		

Degree Students	150(57)	Non-Degree Students	111(79)
-----------------	---------	---------------------	---------

International Exchange Projects for 2022 (Grant Recipients)

Faculty/Graduate Schools	Name at the time of application	Selected Country	Faculty
Center for General Education	Special English Program – Sheffield University ELTC Online Study Program	U.K.	SOKOLOVSKY, Jesse
	Special English Program – English Immersion Summer Intensive Course	U.K.	SOKOLOVSKY, Jesse
Faculty of Humanities, Law and Economics	Field Study in Thailand	Thailand	AYANO, Seiki
Faculty of Education	Implementation of overseas educational training in collaboration with the Faculty of Education at the University of Auckland	New Zealand	ARAO, Hiroko
Faculty & Graduate School of Medicine	International Recommendation System Special Scholarship Program with Partner Universities	Thailand, China	HORI, Hiroki
Graduate School of Engineering	Implementation of a Twinning Program by Hanoi University of Science and Technology and the Graduate School of Engineering of Mie University (continued through AY2022)	Viet Nam	IKEURA Ryojyun
	Holding international symposiums in seven research domains and promoting programs to internationalize education	Germany, India, Thailand, China, Italy	IKEURA Ryojyun
Graduate School of Bioresources	Diversification of short-term practical training in overseas Universities	Malaysia	NAKASHIMA, Chiharu
Graduate School of Regional Innovation Studies	Holding the 14th International Workshop on Regional Innovation Studies and Exchange Business	Thailand, Taiwan	KOBAYASHI, Issei
Center for International Education and Research	Mie University Overseas Field Study 2022	Partner school	MATSUOKA, Chizuko
	Zoom discussion with student participants from overseas partner institutions to learn Japanese language and intercultural understanding	Partner school	FUKUOKA, Masako
	Language Training & Field Study by Beijing Foreign Studies University	Partner school	FUKUOKA, Masako
	Language and Intercultural Understanding Program at the University of Waikato, New Zealand	Partner school	SHOJI, Shinichi

Number of Foreign Researchers (Academic Year 2022)

Foreign Researchers	18
---------------------	----

Partner Universities and Institutions / University Level (24 Countries & Regions, 67 Universities / Institutions)

* The numbers in parentheses represent the execution date of the Faculty Level

As of April 1, 2023

Institution's Name	Countries & Regions	Agreement Date	
		General Agreement	MOU
Jiangsu University	China	Jan. 15, 1986	Sep. 29, 1995
Chiang Mai University	Thailand	Aug. 22, 1989	Jan. 31, 1996
University of Tasmania	Australia	Apr. 01, 1996	Apr. 01, 1996
Polytechnic University of Valencia	Spain	July 04, 1997	Jan. 10, 2003
Guangxi University	China	Feb. 22, 1999 (Apr. 21, 1995: Bio.)	Feb. 22, 1999 (Dec. 19, 1995: Bio.)
Kasetsart University	Thailand	Dec. 23, 1999	July 24, 2000
Khon Kaen University	Thailand	July 17, 2000 (Aug. 25, 1994: Med.)	July 17, 2000
University of Erlangen-Nuremberg	Germany	Mar. 16, 2001	Mar. 16, 2001
Dongguk University	Republic of Korea	Dec. 16, 2002	Mar. 24, 2004
Ewha Womans University	Republic of Korea	Dec. 17, 2002	Mar. 23, 2004
Xi'an University of Technology	China	Aug. 28, 2003	Aug. 28, 2003
Suranaree University of Technology	Thailand	Oct. 18, 2003 (Sep. 08, 2000: Bio.)	Oct. 18, 2003
Bangladesh Agricultural University	Bangladesh	Mar. 15, 2004	Mar. 15, 2004
Tianjin Normal University	China	Nov. 20, 2004 (Mar. 15, 2003: Edu.)	Nov. 20, 2004 (Mar. 15, 2003: Edu.)
University of North Carolina Wilmington	U.S.	Dec. 21, 2005	Dec. 21, 2005
Jiangnan University	China	Feb. 13, 2006 (Mar. 30, 1998: Bio.)	Feb. 13, 2006 (Mar. 30, 1998: Bio.)
IPB University	Indonesia	Sep. 24, 2006 (Sep. 24, 2001: Bio.)	Sep. 24, 2006 (Sep. 24, 2001: Bio.)
Sriwijaya University	Indonesia	Nov. 06, 2007	Nov. 06, 2007
Thammasat University	Thailand	Jan. 15, 2008 (Feb. 27, 2004: Bio.)	Jan. 15, 2008 (Feb. 27, 2004: Bio.)
Nanjing Tech University	China	July 07, 2008	July 07, 2008
Heidelberg University	Germany	-	Dec. 12, 2008
Henan Normal University	China	Dec. 15, 2008 (Oct. 26, 2005: Edu.)	Dec. 15, 2008 (Oct. 26, 2005: Edu.)
Sejong University	Republic of Korea	Feb. 10, 2009	Feb. 10, 2009
Maejo University	Thailand	Mar. 31, 2009	Mar. 31, 2009
Foreign Trade University	Viet Nam	May 26, 2009	May 26, 2009
Hochi minh City University of Education	Viet Nam	July 28, 2009	July 28, 2009
Shanghai Ocean University	China	Sep. 24, 2009 (Oct. 16, 1995: Bio.)	Sep. 24, 2009 (Oct. 24, 1996: Bio.)
Tashkent State Institute of Law	Uzbekistan	Mar. 22, 2010	Mar. 22, 2010
Inner Mongolia University of Technology	China	Mar. 31, 2010 (Mar. 08, 2000: Eng.)	Mar. 31, 2010 (Nov. 13, 2000: Eng.)
Haluoleo University	Indonesia	July 23, 2010	July 23, 2010
Hawaii Pacific University	U.S.	Sep. 13, 2010	-
University of Sharjah	United Arab Emirates	Oct. 04, 2010 (Dec. 24, 2008: Med.)	Oct. 04, 2010 (Dec. 24, 2008: Med.)
Yanbian University	China	Oct. 15, 2010	Oct. 15, 2010
University of Savoie	France	Nov. 04, 2010	Nov. 04, 2010
University of Bochum	Germany	Mar. 28, 2011	Mar. 28, 2011
Jaum I University	Spain	Apr. 14, 2011	Apr. 14, 2011
Cardiff University	U.K.	July 15, 2011	July 15, 2011
Anhui Agricultural University	China	Oct. 25, 2011 (Oct. 21, 2008: Bio.)	Oct. 25, 2011 (Oct. 21, 2008: Bio.)
University of Leipzig	Germany	-	Feb. 07, 2012
Padjadjaran University	Indonesia	Feb. 24, 2012	Feb. 24, 2012
Tati University College	Malaysia	May 24, 2012 (Aug. 02, 2010: Eng.)	May 24, 2012
University Putra Malaysia	Malaysia	Aug. 08, 2012 (Sep. 19, 2006: Bio.)	Aug. 08, 2012
Yunnan University	China	Aug. 20, 2012	Dec. 25, 2012
Beijing Foreign Studies University	China	Sep. 21, 2012 (Mar. 23, 2012: Hum.)	Sep. 17, 2012
University of Central Lancashire	U.K.	Jan. 31, 2017	Apr. 19, 2013
National Kaohsiung Normal University	Taiwan	June 18, 2013	June 24, 2013
La Molina National Agrarian University	Peru	Aug. 23, 2013	Aug. 23, 2013
Fiji National University	Fiji	May 05, 2014	May 05, 2014
The University of the South Pacific	Fiji	May 06, 2014	May 06, 2014
Can Tho University	Viet Nam	Sep. 12, 2014	Sep. 12, 2014
National Sun Yat-sen University	Taiwan	Nov. 04, 2014	Nov. 04, 2014
University of Zambia	Zambia	Nov. 11, 2014 (Feb. 07, 2007: Med.)	Nov. 11, 2014 (Feb. 07, 2007: Med.)
National Quemoy University	Taiwan	June 23, 2015	June 23, 2015
University of Sao Paulo	Brazil	July 07, 2015 (May 16, 2011: Hum.)	July 07, 2015
Southern Taiwan University of Technology	Taiwan	Aug. 28, 2015 (Nov. 14, 2014: Inno.)	Aug. 28, 2015
Jeju National University	Republic of Korea	Sep. 14, 2015	Sep. 14, 2015
Sofia University St. Kliment Ohridski	Bulgaria	Sep. 19, 2016	Sep. 19, 2016
Royal University of PhnomPenh	Cambodia	Jan. 18, 2017	Jan. 18, 2017
National Taiwan Ocean University	Taiwan	Jan. 03, 2019	Jan. 03, 2019
University of San Carlos	Philippines	Aug. 16, 2019	Nov. 25, 2019
Chung Ang University	Republic of Korea	Oct. 14, 2019	Oct. 14, 2019
Aletheia University	Taiwan	Jan. 14, 2020	Jan. 14, 2020 (Oct. 21, 2014: Inno)
University of Malaysia Terengganu	Malaysia	July 30, 2020 (Nov. 28, 2017: Bio)	July 30, 2020 (Nov. 28, 2017: Bio)
Keimyung University	Republic of Korea	Aug. 12, 2021	Aug. 12, 2021
Zhengzhou University	China	Nov. 04, 2021	-
Central Luzon State University	Philippines	Oct. 18, 2022 (Aug. 1, 2018: Bio.)	Oct. 18, 2022 (Aug. 1, 2018: Bio.)
The University of Waikato, The University of Waikato college	New Zealand	Dec. 31, 2023	-

Faculty Level (24 Countries & Regions, 44 Universities / Institutions)

As of April 1, 2023

	Institution's Name	Countries & Regions	Agreement Date	
			General Agreement	MOU
Center for General Education	The English Language Training Centre, the University of Sheffield	U.K.	Sep. 10, 2015	-
Faculty of Humanities, Law and Economics	University of Lille	France	Nov. 01, 1989	Mar. 15, 2013
	University Lyon 2	France	Jan. 21, 2002	Jan. 21, 2002
	Nankai University	China	Jan. 22, 2010	Mar. 18, 2013
	Faculty of Humanities and Theology, Lund University	Sweden	Jan. 08, 2016	Mar. 18, 2011
Faculty of Education	The University of Auckland	New Zealand	Aug. 14, 2013	-
	School of Foreign Languages, Beijing Institute of Technology	China	Nov. 16, 2015	-
Graduate School of Medicine, Faculty of Medicine	Department of Japanese College of European and Asian Languages Wenzao Ursuline University of Languages	Taiwan	July. 19, 2022	-
	Shanghai Jiao Tong University	China	Aug. 11, 2004	Dec. 01, 2009
	Guangxi Medical University	China	June 06, 2006	Sep. 01, 2020
	School of Medicine Muhimbili University of Health and Allied Sciences	Tanzania	Oct. 19, 2007	Oct. 19, 2007
	University of Ghana Medical School	Ghana	Feb. 18, 2010	Feb. 18, 2010
	School of Medicine, University of Perugia	Italy	Feb. 22, 2010	Feb. 22, 2010
	The Second Medical College of Lanzhou University	China	Mar. 17, 2011	Mar. 17, 2011
	University of Health Sciences, Lao PDR	Laos	Sep. 26, 2011	Sep. 26, 2011
	Amrita Institute of Medical Sciences	India	Jan. 30, 2012	Jan. 30, 2012
	University of Medicine-1, Yangon	Myanmar	Dec. 17, 2012	-
	Flinders University, School of Medicine	Australia	Feb. 27, 2014	Feb. 27, 2014
	Catholic University of Applied Sciences in Freiburg	Germany	June 11, 2014	June 11, 2014
	University of Washington School of Medicine	U.S.	Aug. 25, 2014	-
	University of Medicine, Mandalay	Myanmar	Nov. 14, 2014	-
	School of Health Science, University of the Philippines Manila	Philippines	July 23, 2015	July 23, 2015
	University of Medicine-2, Yangon	Myanmar	Oct. 22, 2015	-
	Bungabandhu Sheikh Mujib Medical University	Bangladesh	July 27, 2015	July 27, 2015
	The Faculty of Medicine and Dentistry University of Bergen	Norway	Jan. 21, 2016	-
	Universita degli Studi di Messina	Italy	Oct. 23, 2019	Oct. 23, 2019
	Graduate School of Engineering, Faculty of Engineering	Department of Thermal Engineering and Engineering Mechanics, Tsinghua University	China	Oct. 01, 1995
King Mongkut's Institute of Technology Ladkrabang		Thailand	Sep. 05, 2005	Sep. 05, 2005
College of Science, Zhejiang University		China	Mar. 28, 2009	Mar. 28, 2009
Arts et Metiers Paristech		France	Aug. 31, 2009	Aug. 31, 2009
The Cleveland Clinic Foundation Lerner Research Institute		U.S.	Apr. 22, 2011 (elected: Feb. 01, 2011)	-
The University of Padova, Department of Management and Engineering and Department of Civil		Italy	Feb. 17, 2014	-
Viet Nam Academy of Sciences and Technology(VAST) Institute of Energy Science(IES)		Viet Nam	Sep. 30, 2014	Sep. 30, 2014
School of Engineering, Reutlingen University		Germany	Mar. 05, 2015	Apr. 29, 2020
Faculty of Mathematics and Natural Sciences, Universitas Gadjah Mada		Indonesia	Jan. 31, 2019	Jan. 31, 2019
Faculty of Mathematics and Natural Sciences, Institut Teknologi Bandung		Indonesia	Feb. 19, 2019	Feb. 19, 2019
Graduate School of Bioresources, Faculty of Bioresources	Department of Chemical Engineering, National Cheng Kung University	Taiwan	Apr. 12, 2019	Apr. 12, 2019
	University of Malaysia Perlis	Malaysia	Dec. 27, 2021	Dec. 27, 2021
	Danang University-University of Science and Education	Viet Nam	Feb. 24, 2022	Feb. 24, 2022
	College of Fisheries, College of Environmental and Marine Science and Technology, Pukyong National University	Republic of Korea	Sep. 22, 1995	Feb. 06, 2013
Graduate School of Regional, Innovation Studies	School of Bioresources, King Mongkut's Institute of Technology Thonburi	Thailand	Oct. 20, 2009	Oct. 20, 2009
	Faculty of Bioscience Engineering Ghent University	Belgium	Mar. 09, 2015	Mar. 09, 2015
Graduate School of Bioresources, Faculty of Bioresources	Graduate Faculty of Agricultural Sciences and Marine Sciences Patein University	Myanmar	Dec. 04, 2016	-
	College of Business and Public Administration, Eastern Washington University	U.S.	Aug. 03, 2017	-

University Library

Usage Statistics (Academic Year 2022)

Total Number of Visitors		119,214
Number of Borrowers	Undergraduates	20,615
	Graduates	3,434
	Faculty & Staff Members	3,669
	Others (including emerituses and retired teaching staff)	318
	Total	28,036
Volumes Lent	Undergraduates	37,532
	Graduates	7,447
	Faculty & Staff Members	7,202
	Others (including emerituses and retired teaching staff)	812
	Total	52,993
Photocopying Request from Outside		12,590
Request to Outside		1,445
Interlibrary Loan Lent		1,223
Borrowed		731

Library Holdings As of April 1, 2023

Classification	Japanese Books	Foreign Books	Total
General Works	43,099	7,263	50,362
Philosophy	38,109	9,431	47,540
History	57,108	5,356	62,464
Social Science	149,805	21,704	171,509
Natural Science	128,264	45,103	173,367
Technology	56,017	15,417	71,434
Industry	50,357	9,476	59,833
Fine Arts	28,574	3,090	31,664
Language	24,062	10,228	34,290
Literature	60,316	18,301	78,617
Periodicals	73,125	83,268	156,393
Total	708,836	228,637	937,473

Academic Publication (Academic Year 2022)

Faculty of Humanities, Law and Economics	Jinbun Ronso [Number of Copies] 150 [Publication Frequency(Per Year)] Yearly	
	TRIO : Journal of Research Center for Culture and Society in Mie [Number of Copies] 1,000 [Publication Frequency(Per Year)] Yearly	
Faculty of Education	Bulletin of the Faculty of Education, Mie University Organization for Higher Education Design and Promotion University Library HP Mie University Scholarly E-collections [MIUSE] (https://mie-u.repo.nii.ac.jp/) / 20 教育学部・教育学研究科 /20C 紀要 [Number of Copies] Available only on the web [Publication Frequency(Per Year)] Yearly	
Faculty of Medicine	Mie Nursing Journal Bulletin of the Faculty of Education, Mie University Organization for Higher Education Design and Promotion University Library HP Mie University Scholarly E-collections [MIUSE] (https://mie-u.repo.nii.ac.jp/) / 30 大学院医学系研究科・医学部 /30C 紀要 [Number of Copies] Available only on the web [Publication Frequency(Per Year)] Yearly	
Faculty of Engineering	Research Activities in Faculty of Engineering, Mie University HP Research/Research achievements (https://www.eng.mie-u.ac.jp/research/activities/) [Number of Copies] Available only on the web [Publication Frequency(Per Year)] Yearly	
Faculty of Bioresources	Bulletin of the Graduate School of Bioresources, Mie University [Number of Copies] 400 [Publication Frequency(Per Year)] Yearly	
	Annals of Field Research and Technology, Mie University [Number of Copies] 200 [Publication Frequency(Per Year)] Yearly	
Graduate School of Regional Innovation Studies	Proceedings of the International Workshop on Regional Innovation Studies [Number of Copies] 150 [Publication Frequency(Per Year)] Yearly	
Organization for Higher Education Design	Mie University Journal of Studies on Higher Education [Number of Copies] 110 [Publication Frequency(Per Year)] Yearly	

University Hospital

Number of Patients (Academic Year 2022)

Clinics	Number of Beds	Number of Patients			
		Inpatients		Outpatients	
		Total Visits	Per Day	Total Visits	Per Day
Hematology and Oncology		6,639	18.2	8,054	33.1
Oncology		4,681	12.8	7,202	29.6
Dermatology		6,293	17.2	17,262	71.0
Ophthalmology		5,367	14.7	31,383	129.1
Cardiovascular Surgery / (Pediatric Cardiology and Cardiac Surgery)		4,645	12.7	3,247	13.4
Thoracic Surgery		2,096	5.7	2,757	11.3
Pulmonary		7,452	20.4	11,458	47.2
Diabetes and Endocrinology		1,274	3.5	14,103	58.0
Cardiology		10,639	29.1	17,721	72.9
Nephrology		2,350	6.4	7,841	32.3
Family Medicine		1,168	3.2	2,654	10.9
Hepato Pancreato Biliary Surgery		8,519	23.3	7,230	29.8
Gastroenterological Surgery		9,547	26.2	10,595	43.6
Pediatric Surgery		1,412	3.9	2,131	8.8
Gastroenterology and Hepatology		10,046	27.5	19,989	82.3
Neurosurgery		10,296	28.2	8,996	37.0
Neurology		5,140	14.1	10,004	41.2
Orthopedic Surgery		14,331	39.3	17,506	72.0
Plastic Surgery		2,226	6.1	4,147	17.1
Radiology		2,205	6.0	18,342	75.5

Clinics	Number of Beds	Number of Patients			
		Inpatients		Outpatients	
		Total Visits	Per Day	Total Visits	Per Day
Gynecology		14,030	38.4	18,152	74.7
Breast Surgery		2,654	7.3	13,003	53.5
Pediatrics / (Pediatric Cardiology and Cardiac Surgery)		8,641	23.7	7,984	32.9
Nephro-Urologic Surgery and Andrology		8,047	22.0	16,883	69.5
Oral and Maxillofacial Surgery		2,456	6.7	18,115	74.5
Psychiatry	30	5,992	16.4	20,119	82.8
Otorhinolaryngology-Head & Neck Surgery		9,721	26.6	12,954	53.3
Anesthesiology		0	0.0	4,472	18.4
Critical Care and Intensive Care Center		5,251	14.4	638	2.6
Maternity and Perinatal Care Center		16,937	46.4	0	0.0
Center for Rheumatic Diseases		1,029	2.8	5,571	22.9
Palliative Care		0	0.0	230	0.9
Infectious Diseases		0	0.0	389	1.6
Advanced Reproductive Medical Center		0	0.0	8,370	34.4
Cancer Genome (Department)		0	0.0	876	3.6
Rehabilitation		0	0.0	167	0.7
Center for Kampo Medicine		0	0.0	1,402	5.8
Common Beds	655				
Total	685	191,084	523.5	351,947	1,448.3

*Total number of patients for Intensive Care Center shows only numbers of patients at the emergency department.
*Total number and the average of patients per day are based on the business day of 243 days. *The number of patients for hepatobiliary pancreatic and transplant surgery includes number of patients for general surgery. *As the general ward of the hospital made the beds available across all departments in AY2018, there are no beds specific to a particular department.

Clinical Facilities

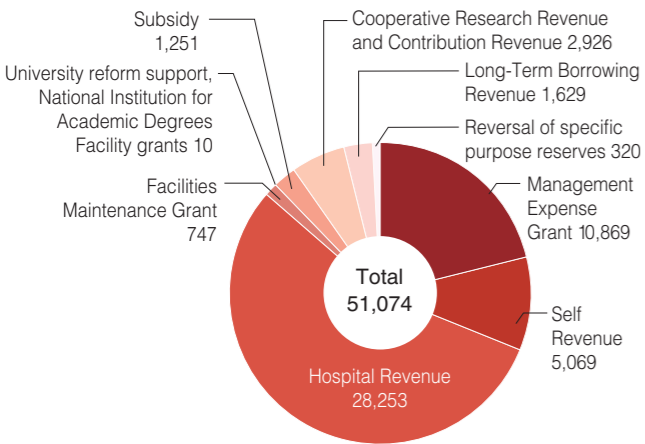
<ul style="list-style-type: none"> ● Medical Division Family Medicine Cardiology Hematology and Oncology Gastroenterology and Hepatology Neurology Pulmonary Oncology Nephrology Diabetes and Endocrinology Infectious Diseases General Surgery Gastroenterological Surgery Hepato Pancreato Biliary Surgery Cardiovascular Surgery Thoracic Surgery Breast Surgery Pediatric Surgery Orthopedic Surgery Gynecology Pediatrics Psychiatry Dermatology Nephro-Urologic Surgery and Andrology 	<ul style="list-style-type: none"> Ophthalmology Otorhinolaryngology-Head & Neck Surgery Neurosurgery Plastic Surgery Radiology Diagnostic Pathology Cancer Genome (Department) Anesthesiology Palliative Care Emergency Department Oral and Maxillofacial Surgery Rehabilitation Genomic Medicine Critical Care and Intensive Care Center Maternity and Perinatal Care Center Breast Center Vascular and Heart Center Advanced Reproductive Medical Center Center for Rheumatic Diseases Center for Kampo Medicine Digestive Disease Center 	<ul style="list-style-type: none"> ● Central Division Laboratory Operating Division Radiology Division Supply Division Blood Transfusion and Cell Therapy Department Intensive Care Unit Department Pathology Division Division of Endoscopic Diagnostics and Therapeutics Hemodialysis Unit Rehabilitation Division Department of Nutrition Clinical Engineering Outpatient Chemotherapy Medical Support Center for Liver Diseases Organ Transplant Center Oral Care Center Total Care Center for Adolescents and Young Adults with Cancer and Children Center of Dementia Prevention and Therapeutics Palliative Care Center Pain Center Ultrasound Examination Center 	<ul style="list-style-type: none"> ● Support Division Medical Information Control Center Clinical Training / Career Support Patient Safety Control Division Infection Control Unit Clinical Research Support Center Ai Center Public Relations Center CCU Network Support Center Center for disaster management promotion and education Center for Disaster Medicine International Medical Support Center Comprehensive Patient Support Center Promotion Center for Team Medical Care Biobank Center (Biorepository) Center for Infectious Disease Emergency Stroke and Cardiovascular Diseases Support Center ● Department of Pharmacy ● Department of Nursing ● Comprehensive Cancer Treatment Center
---	---	--	---

As of April 1, 2023

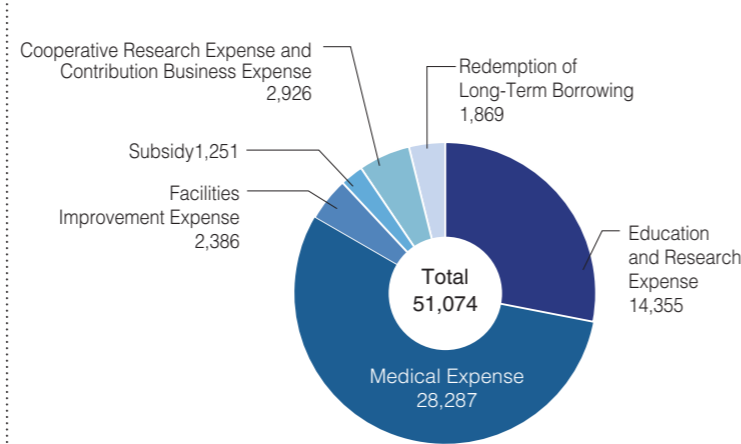
Date

Budget (Academic Year 2023)

Revenues (Unit: 1,000,000 Yen)



Expenses (Unit: 1,000,000 Yen)



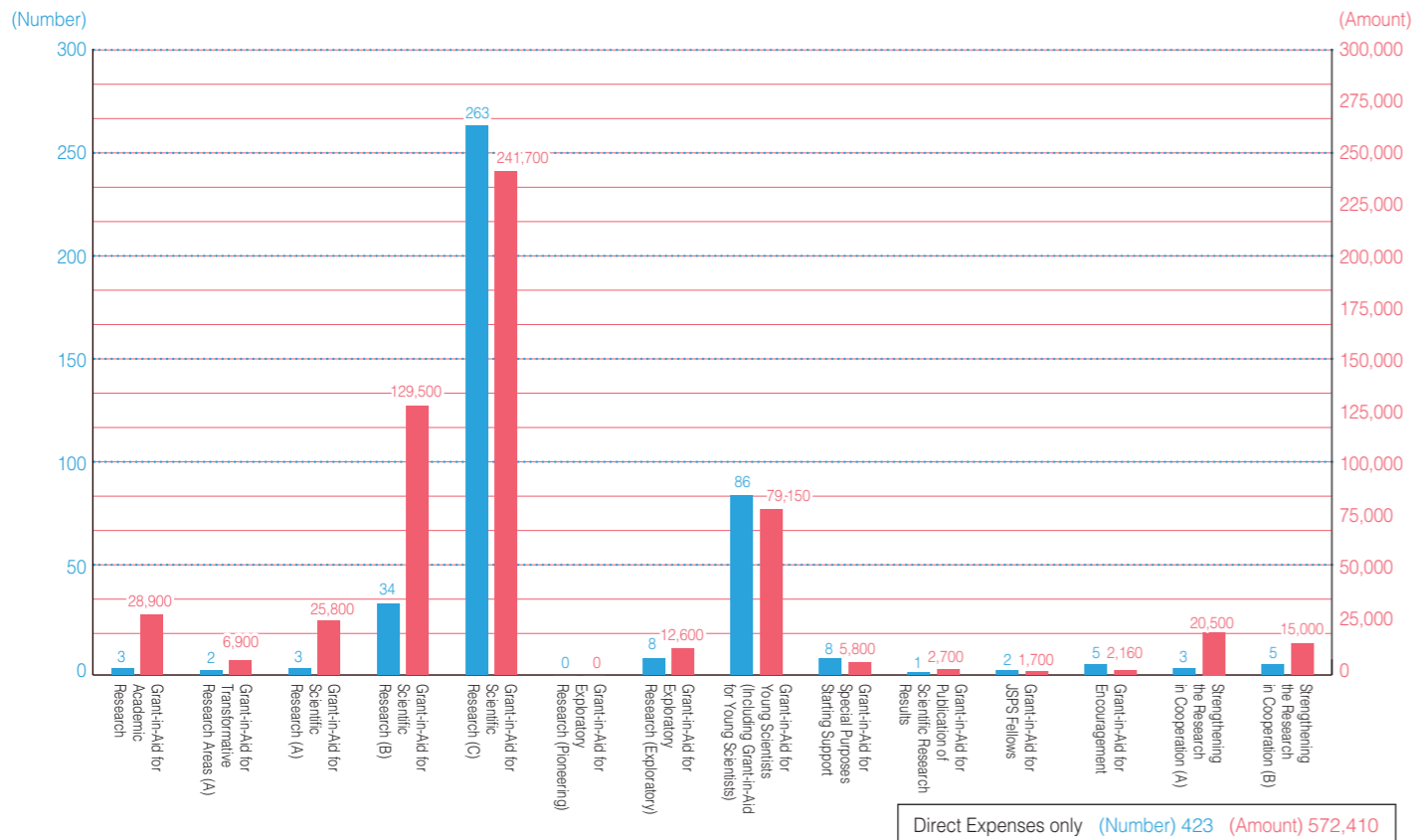
Grant-in-Aid for Scientific Research & Research in Cooperation with Private Sectors (Academic Year 2022)

Research in Cooperation with Private Sectors (Achievement) (Unit: 1,000 Yen) (Round down to the 1,000)

Category	Number	Amount
Research in Cooperation with Private Sectors	272	404,127
Research in Trust	149	978,466
Grants and Endowments	1,096	768,531
Total	1,517	2,151,124

Grant-in-Aid for Scientific Research

(Unit: 1,000 Yen) (Rounded to the nearest thousand yen)



Welfare Facilities

Welfare Facilities As of April 1, 2023

Name	Total Floor Space (㎡)	Capacity
Center for Physical & Mental Health	549	
Regional Co-creation Plaza	1,389	Capacity 615
Cafeteria 2	1,012	296
Suiryo-Kaikan (Student Hall)	1,762	75 (Dining Hall)

Dormitories As of April 1, 2023

Name	Total Floor Space (㎡)	Capacity
Anotsu-Ryo (Men's Dormitory)	3,851	Capacity 109
Seiwa-Ryo (Women's Dormitory)	1,245	60
Omi-Ryo (Women's Dormitory for International Students)	2,137	75 (Japanese Students 50 International Students 25)
University Foreign Students' House	1,221	Single Rooms 30 Couple Rooms 5
Foreign Students' Dormitory	3,428	Capacity 160

Athletic Facilities and Facilities for Extracurricular Activities

As of April 1, 2023

Name	Floor Space/Number	Name	Floor Space/Number
First Gymnasium	Floor, etc. 1,577㎡ Judo Hall 137㎡ Kendo Hall 135㎡	Kyudo Gymnasium (6 persons can simultaneously shoot)	396㎡
Second Gymnasium	Floor, etc. 1,195㎡ Judo Hall 123㎡ Karatedo Hall 126㎡	Second Kyudo Gymnasium (8 persons can simultaneously shoot)	360㎡
Indoor Training Center	733㎡	Equestrian Area and Stables	5,030㎡
Outdoor Track and Field (Officially approved 400 m track)	23,001㎡	Sports complex A	4,603㎡
Baseball ground	1	Sports complex B	3,849㎡
Soccer / Rugby Field	1	Boat House	223㎡
Tennis Courts	10	Garage for Car Clubs	100㎡
First Sports Field	154㎡	Facilities for Extracurricular Cultural Activities	480㎡
Second Sports Field	153㎡	Campus Lodging Facilities for Extracurricular Activities	198㎡
Swimming Pool (50 m long, 8 courses)	2,328㎡	Facilities for Extracurricular Cultural Activities	352㎡
		Facilities for Extracurricular Sports	174㎡
		Shower Room	19㎡
		Field Managing Office	120㎡
		Nagai Memorial Training Room	106㎡

Land and Buildings

As of May 1, 2023

Districts	Divisions	Area (㎡)	Building (㎡)	
Kamihama	Administration Bureau		4,414	
	Organization for Research Initiative and Promotion		15,636	
	Center for Information technologies and Network		1,410	
	Center for Physical & Mental Health		549	
	University Library		10,411	
	Center for General Education		12,256	
	Faculty of Humanities, Law and Economics		5,295	
	Faculty of Education		15,356	
	Integrated Center for Educational Research and Practice		1,727	
	Faculty of Medicine		33,842	
	University Hospital		72,798	
	Faculty of Engineering	528,340	29,741	
	Faculty of Bioresources		32,529	
	Graduate School of Regional Innovation Studies		1,568	
	Gymnasiums		6,575	
	Sansui Hall		4,084	
	Foreign Teachers' Quarters		436	
	University Housing		1,331	
	Women's Dormitory		3,382	
	Foreign Students' House		1,221	
Foreign Students' Dormitory		3,428		
Special Facilities for Common Use		16,657		
Others		5,449		
Total		528,340	280,095	
Kan'onji	Kindergarten		953	
	Primary School		6,503	
	Junior High School	3,403	5,728	
	Mentally Challenged Children's School	* 91,759	3,509	
	University Housing		2,303	
	Total	3,403	18,996	
	* 91,759			
	Others	Kii-Kuroshio Bio-Regional Field Science Center		
		Farm Station	353,179	7,276
		Forest Station	4,569,562	1,421
Fishery Research Station (Shima)		35,649	1,120	
(Toba)		* 1,299	594	
Training Ship Base		1,356	574	
Boat House		* 241	223	
Men's Dormitory		7,966	3,851	
University Housing		10,395	7,607	
Total		4,978,107	22,666	
* 1,540				
Grand Total	5,509,850	321,757		
* 93,299				

The measurement of buildings (㎡) shows the gross floor area. * indicates leased lands

Training Ship "SEISUI MARU"

As of April 1, 2023

Length (O.A.)	50.90m	Diesel Engine 1,300PS	1 Engine
Breadth (MLD)	8.60m	Speed	10.0Kt
Depth (MLD)	3.75m	Complement (Capacity)	44 people
Gross Tonnage	318t	Built	January30, 2009

Mutual Cooperation Agreement with Community

As of April 1, 2023

Name of Organization	Agreement Date
◆National Institute	
Chubu Regional Development Bureau, Ministry of Land, Infrastructure, Transport and Tourism	Dec. 19, 2011
Ministry of Land, Infrastructure, Transport and Tourism Kinki Regional Development Bureau others	Mar. 27, 2015
◆Mie Prefecture	
Agreement on Mutual Cooperation for Disaster Control with Mie Prefecture	Dec. 21, 2005
Specific Agreement on Mutual Cooperation for Disaster Control with Mie Prefecture	Mar. 20, 2007
Comprehensive agreement on cooperation with the Mie Prefectural Science and Technology Promotion Center (now the Mie Prefecture Industrial Research Institute)	Mar. 23, 2007
Collaboration Agreement on the field of "Medicine" with Mie Prefecture	Jan. 29, 2010
Mie Prefecture (Department of Disaster Mitigation)	May 26, 2010
Collaboration Agreement on Promotion of Demonstrating Arts with Mie University	Sep. 12, 2013
Mutual Agreement with Mie Prefectural Museum	Feb. 26, 2014
Agreement on Establishment of Mie Disaster Mitigation Center with Mie Prefecture	Apr. 01, 2014
Agreement on Hosting of International Conferences with Mie Prefecture	Nov. 22, 2016
Agreement related to collaboration and cooperation for revitalizing the region, etc., concluded by Mie Prefecture; Mie Industry and Enterprise Support Center; National niversity Corporation Mie University; Collaborative Research Organization for Future Regional Society, The University of Tokyo; and Educational Corporation Mie Ohashi Gakuen	Feb. 22, 2019
◆Agreement on mutual friendship cooperation with municipalities	
Owase City	Dec. 02, 2002
Yokkaichi City	Oct. 07, 2003
Kameyama City	Jan. 27, 2007
Toba City	Mar. 22, 2004
Asahi cho	Jun. 09, 2004
Shima City	Jun. 21, 2005
Iga City	Jan. 23, 2006
Tsu City	Feb. 20, 2009
Suzuka City	Jun. 30, 2010
Ise City	Jan. 27, 2011
Kuwana City	Jul. 01, 2013
Matsusaka City	Aug. 29, 2013
Minamiise cho	Jun. 02, 2015
Tamaki cho	Oct. 05, 2016
Kisosaki cho	Jan. 16, 2017
Meiwa cho	Jan. 19, 2017
Toin cho	Jan. 23, 2017
Odai cho	Feb. 14, 2017
Kihoku cho	Feb. 14, 2017
Nabari City	Feb. 20, 2017
Kumano City	Feb. 21, 2017
Mihama cho	Feb. 21, 2017
Kiho cho	Feb. 21, 2017
Taki cho	Feb. 24, 2017
Watarai cho	Mar. 27, 2017
Komono cho	Mar. 28, 2017
Inabe City	Mar. 30, 2017
Kawagoe cho	Mar. 30, 2017
Taiki cho	Mar. 31, 2017
Kuwana city・Kuwana city Medical Center	Mar. 30, 2022
◆Educational Institutions	
Wakayama University	Nov. 30, 2004
Suzuka University of Medical Science	Jun. 22, 2007
Mie Prefecture Board of Education	Oct. 18, 2013
University Support Project for Strategic Collaboration	Sep. 26, 2008
Asahi University	Feb. 03, 2010
Nagoya University and Aichi University of Education	Apr. 24, 2012
Ritsumeikan University・Shima City	Aug. 28, 2013
Mie Veterinary Medical Association	Mar. 27, 2015
Agreement on Consortium of Higher Education in Mie with Mie Prefecture and Higher Education Institutions within the Prefecture	Mar. 29, 2016
Agreement by National University Corporations in the Tokai Region related to response to large-scale disasters	Jan. 14, 2017
Non-profit Incorporated Foundation Fishery Science Association as the designated management body for Toba Sea-Folk Museum	Mar. 18, 2019
Mie University CO-OP	Oct. 15, 2019
Fujita Health University・Hamamatsu University School of Medicine	Mar. 31, 2022

Name of Organization	Agreement Date
◆Private Sectors	
Auto Networks Technologies, Ltd.	May 25, 2005
CHUBU Electric Power Co. Inc.	Sep. 14, 2005
Fuji Electric Co., Ltd.	Feb. 22, 2006
Hyakugo Economic Research Institute, The Hyakugo Bank,Ltd.	Mar. 10, 2006
Development Bank of Japan	Mar. 10, 2006
Okasan Holdings Inc.(now the Okasan Securities Group)	Jun. 05, 2006
The Mie Bank Ltd.	May 28, 2007
Sumitomo Mitsui Trust Bank	Nov. 01, 2007
The Daisan Bank	Apr. 20, 2009
Mitsubishi UFJ Research and Consulting	Jul. 09, 2009
JA-Mie Chuokai	Nov. 12, 2009
Nippon Menard Cosmetic Co., Ltd.	Mar. 09, 2015
Japan Finance Corporation Tsu Branch	Mar. 31, 2016
Mobilityland Corporation	Nov. 18, 2016
K.MIKIMOTO & CO.,LTD.	Nov. 09, 2020

Extension Courses and Others (Academic Year 2022)

Extension Courses

Department	Course Title	Number of Event	Total Number of Participants (Approx.)
Faculty of Humanities, Law and Economics	Faculty of Humanities, Law and Economics 2022 Extension Course: Murasaki Shikibu and The Tale of Genji -Focusing on the Life of Murasaki Shikibu-	36	16,804
Faculty of Education	58th star-watching party others	6	1,032
Faculty of Medicine/University Hospital	Here's What You Need to Know! Preparing for a Tsunami Triggered by a Major Earthquake in the Nankai Trough	2	432
Faculty of Engineering	13th Summer Vacation Creative Manufacturing Experience Seminar	16	682
Faculty of Bioresources	11th Faculty of Bioresources Open Laboratory	14	415
Graduate School of Regional Innovation Studies	The 14th International Workshop on Regional Innovation Studies others	1	—
Others	Mie Academic Seminar 2022 others	243	8,965
Total		318	28,330

Delivery Lectures (Intended for high school)

Department	Course Title	Number of Event	Total Number of Participants (Approx.)
Faculty of Humanities, Law and Economics	The World of Ninjas others	15	634
Faculty of Education	The field of education research others	5	209
Faculty of Medicine	Current status and problems in medical transplationtation -heart transplants- others	4	190
Faculty of Engineering	Mysteries of "nano" metals others	15	649
Faculty of Bioresources	How to maintain attractive, healthy skin others	8	190
Total		47	1,872

Mie University

Postal Code: 514-8507
1577 Kurimamachiya-cho Tsu city, Mie
TEL +81-(0) 59-232-1211

Graduate School of Medicine, Faculty of Medicine, University Hospital

Postal Code: 514-8507
2-174 Edobashi Tsu city, Mie
TEL +81-(0) 59-232-1111



Map of Affiliated Schools

Kindergarten

Postal Code: 514-0062 523 Kannonji-cho Tsu city, Mie
TEL +81-(0) 59-227-1711

Primary School

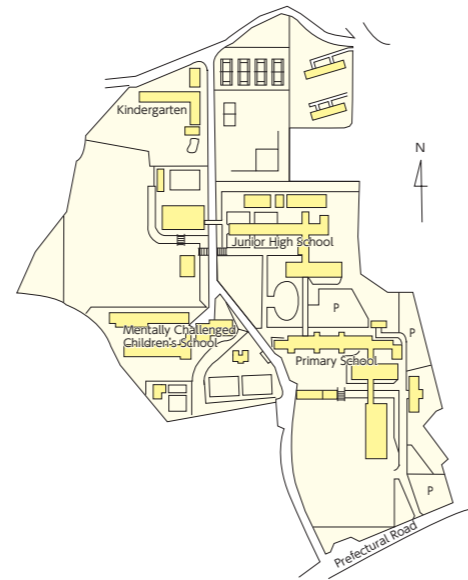
Postal Code: 514-0062 359 Kannonji-cho Tsu city, Mie
TEL +81-(0) 59-227-1295

Junior High School

Postal Code: 514-0062 471 Kannonji-cho Tsu city, Mie
TEL +81-(0) 59-226-5281

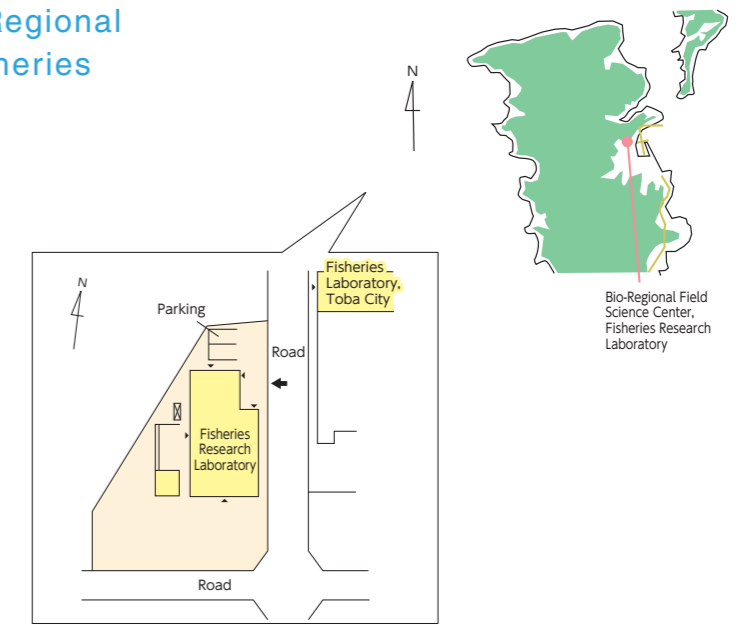
Mentally Challenged Children's School

Postal Code: 514-0062 484 Kannonji-cho Tsu city, Mie
TEL +81-(0) 59-226-5193



Map of Kii-Kuroshio Bio-Regional Field Science Center, Fisheries Research Laboratory

Postal Code: 517-0015
641-9 Ohama-cho Toba city, Mie
TEL +81-(0)599-37-7310



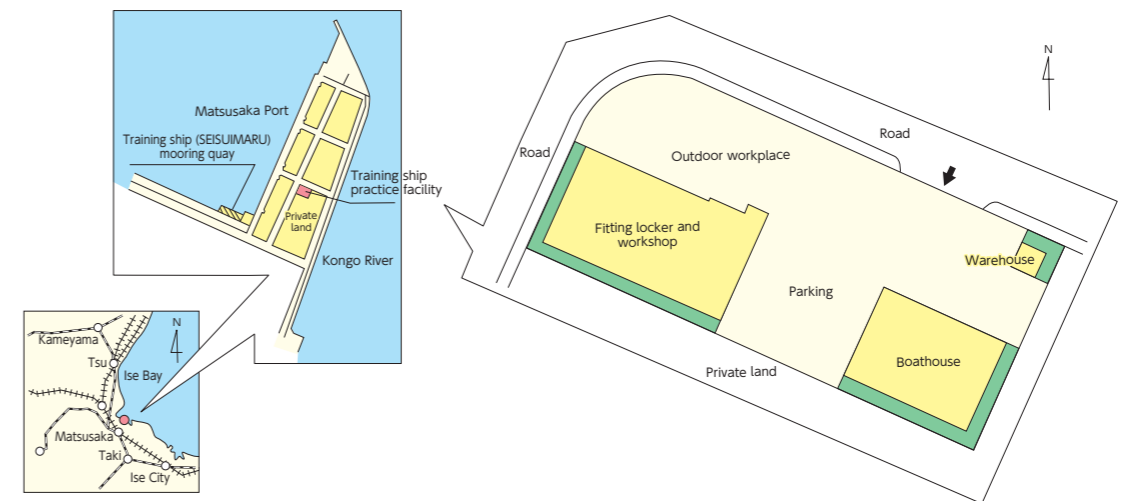
Map of Kii-Kuroshio Bio-Regional Field Science Center, Farm Station

Postal Code: 514-2221
2072-2 Takanoo-cho Tsu city, Mie
TEL +81-(0) 59-230-0044



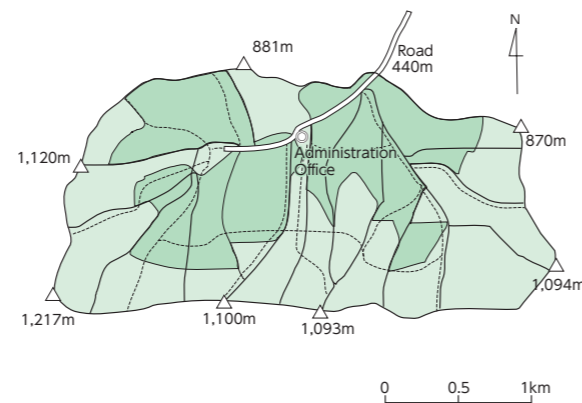
Map of Training Ship "SEISUMARU" Base

Postal Code: 515-0001 1819-18 Aza Tsukiji, Ooguchi-cho Matsusaka city, Mie
TEL +81-(0) 598-50-1066 (Matsusaka Port)
TEL +81-(0) 90-3022-8767 (Ship Mobile)
TEL +81-(0) 598-51-0710



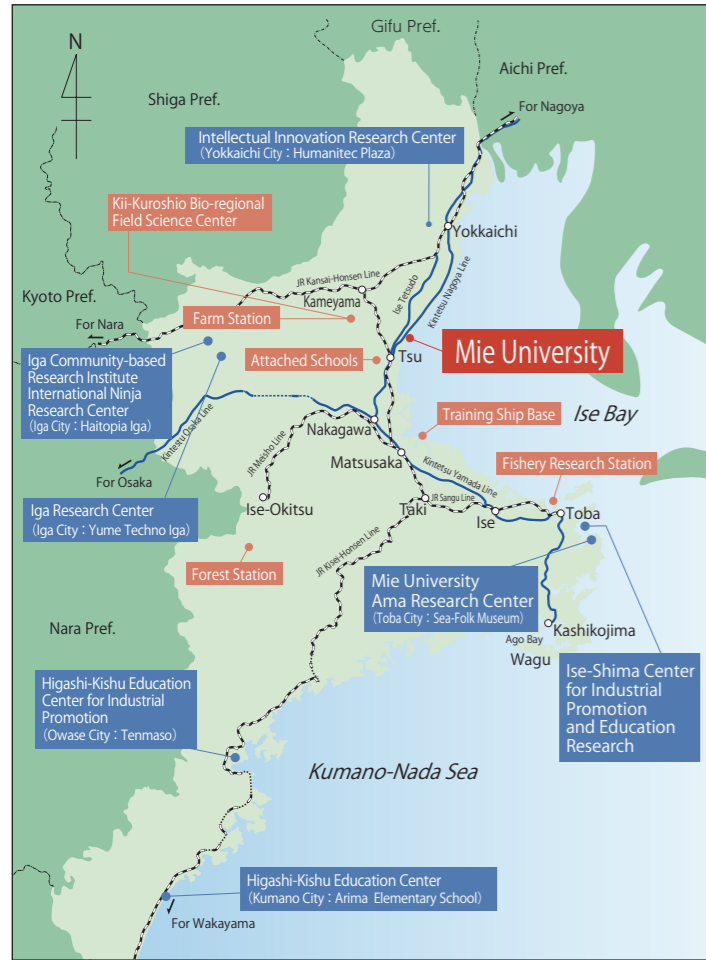
Map of Kii-Kuroshio Center Forest Station

Postal Code: 515-3532
2735 Kawakami Misugi-cho Tsu city, Mie
TEL +81-(0) 59-274-0135



Location of Campus

Mie Prefecture



Tsu

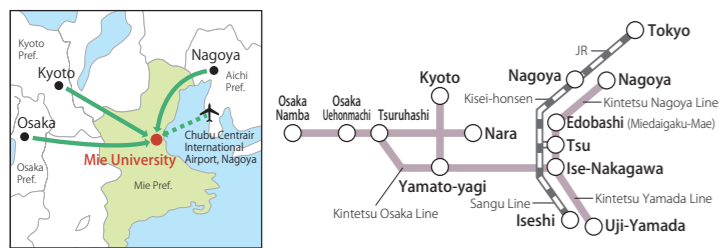


Campus Addresses

<https://www.mie-u.ac.jp/>

Division	Address	Phone		
Faculty of Humanities, Law and Economics	1577 Kurimamachiya-cho Tsu city, Mie Pref. 514-8507	+81-(0) 59-232-1211		
Faculty of Education				
Kindergarten	523 Kan'nonji-cho, Tsu city, Mie Pref. 514-0062	+81-(0) 59-227-1711		
Primary School	359 Kan'nonji-cho, Tsu city, Mie Pref. 514-0062	+81-(0) 59-227-1295		
Junior High School	471 Kan'nonji-cho, Tsu city, Mie Pref. 514-0062	+81-(0) 59-226-5281		
Mentally Challenged Children's School	484 Kan'nonji-cho, Tsu city, Mie Pref. 514-0062	+81-(0) 59-226- 5193		
Graduate School of Medicine / Faculty of Medicine	2-174 Edobashi Tsu city, Mie Pref. 514-8507	+81-(0) 59-232-1111		
University Hospital				
Graduate School of Engineering / Faculty of Engineering	1577 Kurimamachiya-cho Tsu city, Mie Pref. 514-8507	+81-(0) 59-232-1211		
Graduate School of Bioresources / Faculty of Bioresources				
Kii-Kuroshio Bio Regional Field Science Center	2072-2 Takano-cho Tsu city, Mie Pref. 514-2221	+81-(0) 59-230- 0044		
Farm Station				
Forest Station	2735 Kawakami Misugi-cho Tsu city, Mie Pref. 515-3532	+81-(0) 59-274- 0135		
Fisheries Research Laboratory	641-9 Ohama-cho Toba city, Mie Pref. 517-0015	+81-(0) 599- 37-7310		
Training Ship "SEISUI MARU"	Matsusaka Port Auto Shipping Telephone	+81-(0) 598- 50-1066 +81-(0) 90-3022-8767		
Training Ship Base	1819-18 Okuchi-cho Matsusaka city, Mie Pref. 515-0001	+81-(0) 598- 51- 0710		
Cetacean Research Center	1577 Kurimamachiya-cho Tsu city, Mie Pref. 514-8507	+81-(0) 59-231-6979		
Graduate School of Regional Innovation Studies				
Organization for Higher Education Design				
Organization for Student Affairs				
Organization for Information Education and Research				
University Library	1577 Kurimamachiya-cho Tsu city, Mie Pref. 514-8507	+81-(0) 59-232-1211		
Center for Information Technologies and Networks				
Center for Data Science Education (Center for Mathematical and Data Science)				
Mie Regional Plan Co-creation Organization				
Organization for Research Initiative and Promotion				
Regional Satellites	Hokusei Regional Satellite Campus	Intellectual Innovation Research Center Yumanitekupuraza, floor 1 1-4-28 Unomori Yokkaichi city, Mie Pref. 510-0074	+81-(0) 59-353-8260	
	Iga Regional Satellite Campus	Iga Research Center	Regional Industrial Creation Center by Industry-academia government Collaboration "Yume Techno Iga" 1-3-3 Yumegaoka Iga city, Mie Pref. 518-0131	+81-(0) 595-41-1071
		Iga Community-based Research Institute International Ninja Research Center	Haitopia Iga, floor 2 500 Ueno-marunouchi Iga city, Mie Pref.518-0873	+81-(0) 595-51-7154 +81-(0) 59-231-9194 (Office, Faculty of Humanities, Law and Economics)
	Ise-Shima Regional Satellite Campus	Mie University Ama Research Center	Toba Sea-Folk Museum 1731-68 Ogitsu Uramura-cho Toba city, Mie Pref. 517-0025	+81-(0) 59-231-9194 (Office, Faculty of Humanities, Law and Economics)
Ise-Shima Center for Industrial Promotion and Education Research		Former Ohama Elementary School Building, floor 2 97 Ohama-cho Toba city, Mie Pref. 517-0015	+81-(0) 599-37-7056	
Higashi-Kishu Regional Satellite Campus	Higashi-Kishu Education Center	Arima Elementary School 2nd Building, floor 2 530 Arima-cho Kumano city, Mie Pref. 519-4325	+81-(0) 80-2446-7345	
	Higashi-Kishu Education Center for Industrial Promotion	Higashi-Kishu Education Center for Industrial Promotion "Tenmaso" 161 Tenmaura Owase city, Mie Pref. 519-3602	+81-(0) 59-231-9673 (Office, Faculty of Bioresources)	
Recurrent Education Center	1577 Kurimamachiya-cho Tsu city, Mie Pref. 514-8507	+81-(0) 59-231-9226		
Center for International Education and Research				
Mie Global Environment Center for Education & Research	1577 Kurimamachiya-cho Tsu city, Mie Pref. 514-8507	+81-(0) 59-232-1211		
Center for Physical & Mental Health				
Administration Bureau				

Access



- 1. From the bus stop No. 4 at the East Exit of Tsu Station take Mie Kotsu bus bound for "Shiratsuka Station" (Route No. 6), "Mie Byoin" (Route No. 51), "Mukumoto" (Route No. 52), "Toyogaoka" (Route No. 52), "Science City" (Route No. 52), "Higashitoyono" (Route No. 53), or "Takadakoko-mae" (Route No. 56) and get off at "Mie Daigaku-mae." (For the University Hospital, Faculty of Medicine, or Faculty of Engineering, get off at "Daigaku Byoin-mae.")
- 2 By taxi from Tsu Station (10 min.)
- On foot from Edobashi Station (15 min.)
- By Tsu Airport Line (high speed boat) from Chubu Centrair International Airport, Nagoya to Tsu Nagisamachi Port (Tsu city Marina) (45 min.)
- 1 By Mie Kotsu (Sanco) Bus from Tsu Nagisamachi Port to Tsu Station (15 min.)
- 2 By taxi from Tsu Nagisamachi Port to Mie University (15 min.)

By Kintetsu Express

From Nagoya	Kintetsu Nagoya Station	60 min.	Edobashi Station	By Walk
From Kyoto/Osaka	Ise-Nakagawa Station	15 min.		15 min.

By Kintetsu Limited Express

From Nagoya	Kintetsu Nagoya Station	50 min.	Tsu Station	By Bus	
From Osaka	Osaka Namba Station	90 min.			15 min.
From Kyoto	Kyoto Station	110 min.			

By JR Mie Rapid

From Nagoya	JR Nagoya Station	50 min.		By Taxi
				10 min.

