

Mie University 2020

From Mie to the World



Mie University is located in a superb natural environment, surrounded by the waters of Ise Bay and the verdant forests of the Suzuka and Nunobiki Mountains, under an expanse of clear sky dotted with white clouds. On a campus blessed with the beauty of nature, we work to cultivate individuals with the character and capabilities to become future leaders in society, and we pursue advanced specialized research driven by creativity and open-mindedness.

In today's Japan, the trends of a low birthrate and ageing society, population decline, and globalization continue to accelerate. Among the numerous problems that have been identified are the growing disparity between urban and rural areas, deepening energy and environmental issues, and economic uncertainty. It is precisely in difficult times such as these that great expectations are placed on universities as "Centers of Communities." At Mie University, we are doing our utmost to share our educational and research outcomes with the wider society and contribute to social advancement and revitalization.

KOMADA, Yoshihiro, M.D., Ph.D.
President of Mie University

Philosophy

As a center of learning, Mie University strives to contribute towards the "Development of Human Resources and Research," enhancing the "Welfare of the Society," through the "Harmonious Coexistence of Nature and Mankind."

From Mie to the World!

We provide world-class community-based education and research results through harmonious coexistence of nature and mankind



The school emblem has a double ring structure; one ring represents an ear of rice for a rewarding life; the other ring of waves, Rourin, represents the philosophy of Mie University, "Sansui: the three greens of sky, waves and mountain."

This double ring structure expresses Mie University's philosophy and wishes of long friendships and productive lives for its alumni.

In addition, the emblem is generally symmetrical, but the asymmetrical aspect of the design shows the free and

progressive spirit of Mie University.

Mie University's predecessor, Mie Normal School, was founded in 1874 and is the oldest of the existing five faculties.

The Six Prospects for Building Mie University

Management and Innovation with a Sense of Security

● Leadership of the President

We advance the "Establishment of sustainable, competitive and a continuously enriching University" stated in the third medium-term goal as well as the University policy to protect the livelihood of faculty and staff members under the leadership of the President.

● Advancement of Analytical and Planning Ability

We strengthen the capability of Institutional Research (IR) and advocate transparency based on appropriate job analysis.

● Reinforcement of Financial Basis

We manage our University Hospital effectively and stably to reinforce our financial basis.

Higher Education for Future Society

● Clarification of the Role of University

We clarify our role at Mie University, to implement our educational and research activities, as the sole national university in this prefecture.

● Cultivation of Leaders

We cultivate independent leaders to engage society by our principle of "The Ability to Empathize," "The Ability to Think," "The Ability to Communicate," and "The Ability to Live."

● Nurture of Advanced Professionals

We foster well-educated and advanced professionals by offering specializations in education and the liberal arts for undergraduate and graduate students.

Career Support with Friendly Environment for Women and Young People

● Friendly Working Environment for Families with Small Children

We provide a friendly working environment for families with small children, maintain and improve our childcare facility, offer sick childcare and an after-school care facility. We also address the time-sharing system.

● Active Promotion of Female Faculty and Staff Members

We promote career assistance to female workers, and are mindful of issues women face in the workplace.

● Support of Improvement for Young Faculty and Staff Members

We are expanding opportunities for tenure, research assistance, student development and faculty development to assist academic and professional development.

Regional Innovation from University

● Mie University as Hub Social Action

We further advance innovative social activities for the enhancement of Mie University as a center for regional development.

● Promotion of Industry Academia Government and Community Collaboration

We pursue positive relations with industries, government, and NPOs, and the establishment of a regional universities network. Additionally, we bring the creation of intellectual property and the generation of innovative technology to realization.

● Regional Creation led by University

We contribute towards a sustainable promotion of local industries, enhancement of community medicine, and disaster mitigation in an effort to increase regional attractiveness.

Unique Academic Research with Variation

● Provision of Research Basis

For the better future of Japan, we respect "diversity research" and maintain the research basis and research fund basis, which maximize the motivation and capability of researchers.

● Activation of Multi-integrated Research

We inspire new passion for multi-integrated research taking advantage of our mid-sized university.

● Contribution toward Society with Research Results

We aim to contribute towards the sustainable development of regional and global communities by sharing our research outcomes.

Global Campus Living Together with Nature

● Globalization of Education and Research Environment

We work towards the creation of a global campus attracting international students, inviting foreign researchers, and establishing overseas offices.

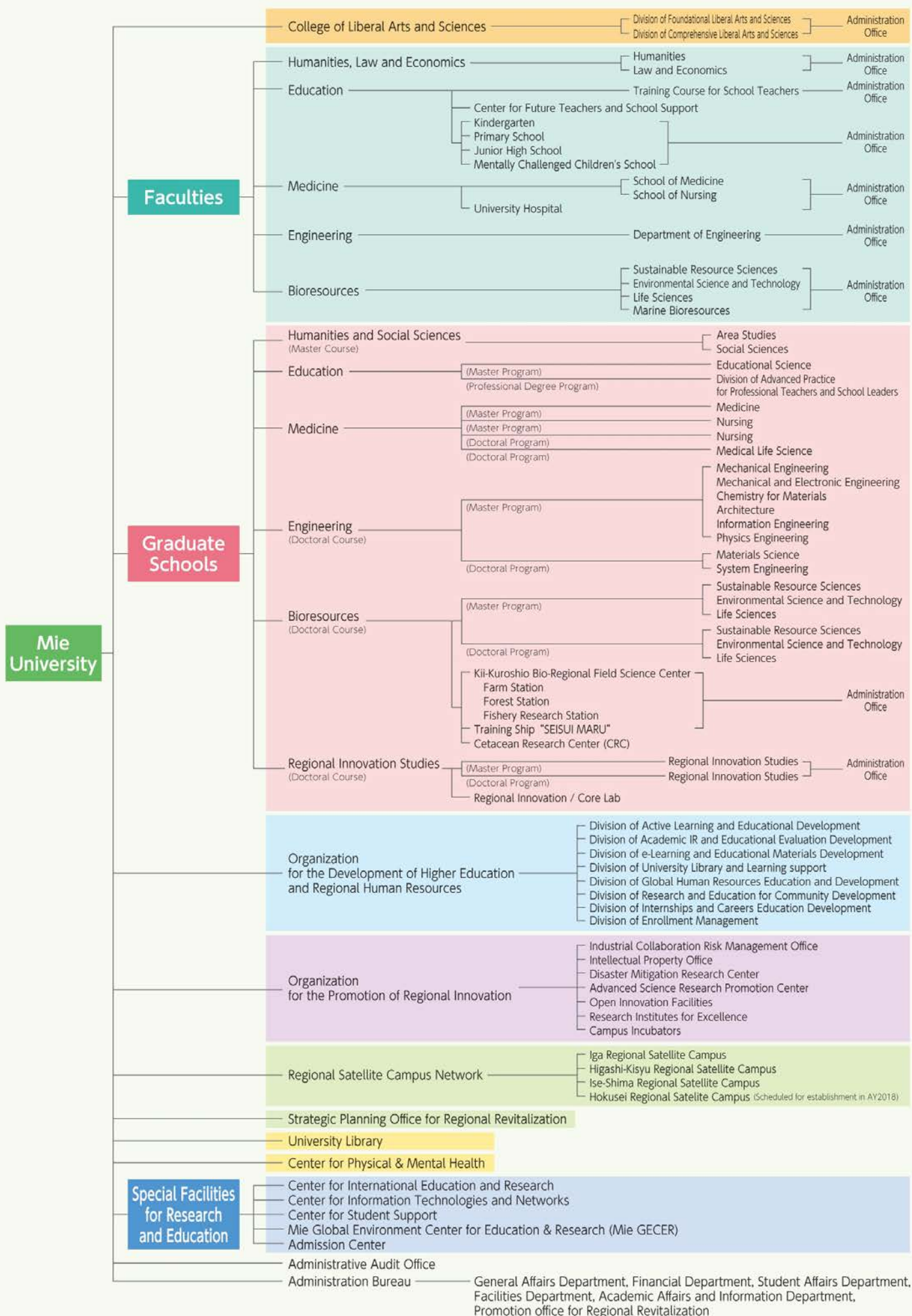
● Achievement of Education and Research Standards for Global Recognition

We promote internationally compatible education, studying abroad for students, overseas training for faculty and staff members, and international collaborative research.

● Green Campus with Rich Nature

We aim to establish a comfortable green campus with rich nature for all students at Mie University.

Operational Organization Chart



Mie University in Figures

Number of Staff Members

(As of May 1, 2019)

1,994

Executive Officers **8**

Teachers **770**

Staff **1,216**

Number of Undergraduates

(As of May 1, 2019)

6,028

Number of International Students

(As of May 1, 2019)

291

Number of Graduates

(As of May 1, 2019)

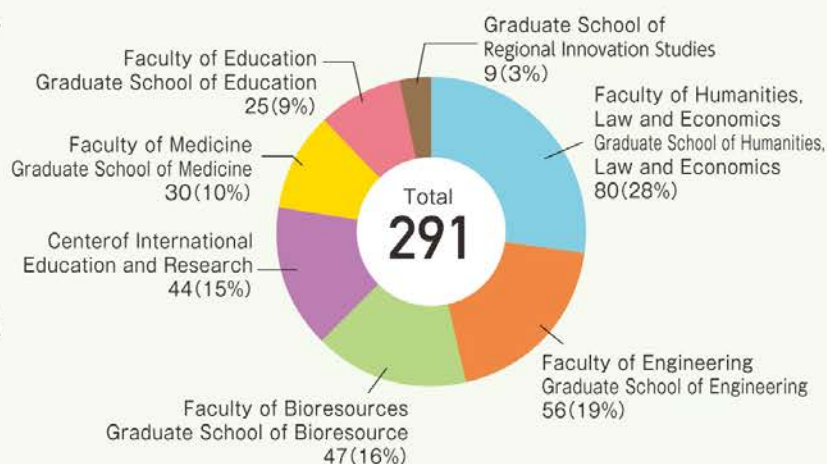
1,111

Number of Students Studying Abroad

(2018)

425

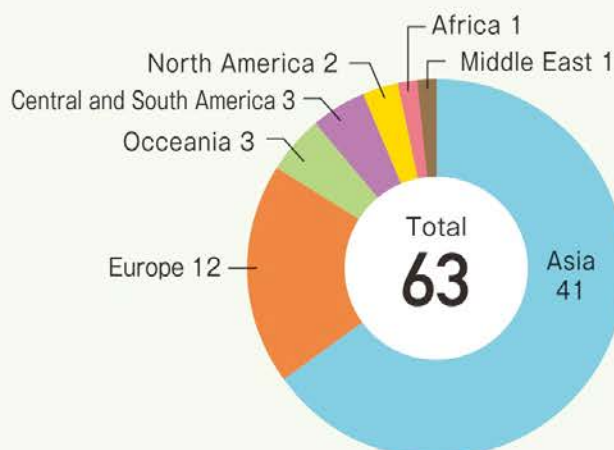
Number of International Students (By Faculty, Graduate School)



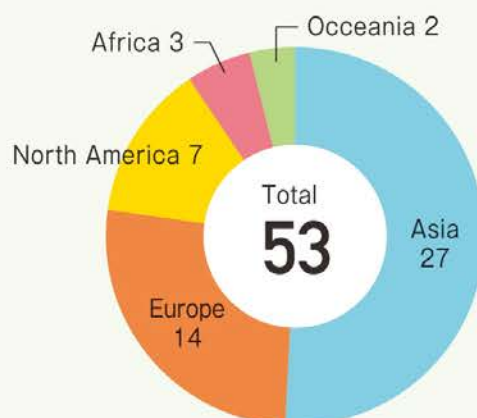
International Exchange Status

(As of May 1, 2019)

Number of International university partnership agreement (24 countries)



Number of International inter-department university partnership agreement (26 countries)



Faculties and Graduate Schools

● Faculty of Humanities, Law and Economics/ Graduate School of Humanities and Social Sciences

Through education and research of the humanities and social studies, we develop student abilities to contribute towards the development of regional culture, explore ideas of what it means to be human and theories of social structures, and take initiatives in solving social problems.



● Faculty of Education/Graduate School of Education

Taking advantage of comprehensive study in the Faculty of Education, students develop expertise in the humanities, social and natural sciences, education, and the professional skills of their respective fields.



● Graduate School of Medicine/Faculty of Medicine

Students develop a sense of social responsibility and ethics, creative and critical cognitive skills, and strive towards an advancement of human health and welfare which translate at local and global levels of society.



● Graduate School of Engineering/Faculty of Engineering

Students in the Graduate School and Faculty of Engineering develop a sense of social responsibility and ethics, creative and critical cognitive skills, and strive towards contributions for the harmonious coexistence of humans and nature through research on science and technology.



● Graduate School of Bioresources/Faculty of Bioresources

With the coexistence of nature and mankind in mind, we established studies to explore the appropriate development and the utilization of bioresources.



● Graduate School of Regional Innovation Studies

The Graduate School of Regional Innovation Studies was established in order to bridge the gap which exists in contemporary industrial society — and especially in local industrial circles such as those in the Mie region — between social needs and graduate school education, and to foster the development of individuals with the capabilities to help halt regional decline. The school cultivates, and sends out into regional society, research and development professionals who are skilled in project management as well as social entrepreneurs capable of generating something out of nothing in their local communities.



Center for International Education and Research (CIER)

The Center for International Education and Research (CIER), was inaugurated on October 1, 2005, as a special facility for research and education. The Center mainly conducts international education and Japanese language education programs for international students.

Message from Director



YOSHIMATSU, Takao, PhD.
Director of CIER, Vice President on International Affairs, Mie University

Global for Local, Local for Global; this phrase was elected to be a meeting slogan that we figured out as a host institution for the 24th Tri-U International Joint Seminar & Symposium held at Mie University in 2017. We soon realized that the present slogan illustrated clearly about what we had to do for international activities in Mie University.

Currently, Mie University is pouring a great amount of energy into the functional enhancement with various aspects including international issues as a regional university in Mie Prefecture. Globalization of educational and research environment on campus; Upgrading and fulfilling the environment of receiving international students and foreign researchers as well as sending students, faculty staff members abroad; Supporting local communities for globalization, these are created as important activities which are necessary for a regional university to promote globalization at a community level. The Center for International Education and Research (CIER) of Mie University was established on October 2005, as a special facility for international research and education. The center conducts various international educational activities and Japanese language programs for international students came from overseas. Every year we publish annual report to appear our international activities for partner universities that we have all over the world. Annual Report 2018 is now ready to be released as you see here. I would like you to open the page of this report and give us constructive opinions and suggestions to improve our activities.

Tri-U International Joint Seminar & Symposium

The Tri-U International Joint Seminar & Symposium is international research symposium conducted in English and organized by Mie University (Japan), Chiang Mai University (Thailand), and Jiangsu University (China). The three universities have hosted the event on a rotating basis every year since 1994. IPB University (Indonesia) has also participated as a host since the 2011 academic year, and Guangxi University (China) was added as a fifth host institution from the 2018 academic year. The event is attended by around 120 students and faculty/staff members from about a dozen universities across Asia every year. It was held at Jiangsu University in the 2019 academic year, with research presentations and workshops on the themes of "Population," "Food," "Energy," "Environment" and "The Belt and Road" aimed at realizing a sustainable society. The 2020 academic year will see the 27th Tri-U International Joint Seminar & Symposium held at Guangxi University in China.



Tri-U International Joint Seminar & Symposium(2019)

Consecutive Degree Program

Mie University has been operating a consecutive degree program in partnership with Tianjin Normal University since April 2019. This program is the successor to a double degree program with the same university, which began in April 2009. Under the consecutive degree program, 20 third-year students from Tianjin Normal University's College of International Educational Exchange (students of the former double degree program) spend one year studying at Mie University before returning to their home university to graduate. Outstanding graduates go on to take the entrance examination for Mie University's graduate schools, and if successful, commence their graduate studies in October or in April of the following year. The program fosters globally-minded individuals with advanced Japanese language proficiency and international outlooks.



Intensive classes for Tianjin Normal University students

Mission

- ① Attain a high level of Japanese language proficiency
- ② Acquire specialized knowledge
- ③ Contribute to internationalization of the campus

Double Degree Program

Mie University has established agreements with overseas partner universities on implementation of double degree programs, whereby students can be enrolled in two institutions and earn a degree from each. We operate these programs at graduate school level with Sriwijaya University and Padjadjaran University in Indonesia.

Mission

- ① Earn a degree from each of the two universities
- ② Develop an international outlook through cross-cultural experience
- ③ Improve practical language proficiency through living abroad
- ④ Help accelerate campus internationalization



Courtesy visit by Sriwijaya University

International Career Development Program

The generic title of "International Career Development Program," the Center for International Education and Research operates (1) English-medium classes and (2) short-term overseas training programs. All students of Mie University, including international students, may attend and participate in these programs, and they are recommended for students who are aspiring to study at a university outside Japan.

► Summer English Training Program at the University of British Columbia (Canada)

Participants in this program hone their English language proficiency and develop their international outlook through studies at a language school located on the campus of UBC, world-renowned institution. The program runs for approximately three weeks, and participants stay with host families. In class, they learn the four skills of Writing, Reading, Listening, and Speaking, and engage in debates, presentations, and cross-cultural exchange activities, and tackle global-level problems in accordance with their proficiency levels. Average temperatures in summer at UBC are around 15 degrees Celsius, and students experience life in a vibrant multicultural city with beautiful natural surrounds.



Summer English Training Program at the University of British Columbia (Canada)

► University College TATI English Program (Malaysia)

University College TATI, one of Mie University's partner institutions, hosts three-week English language training programs in the summer (August) and spring (March) vacation periods. The programs have been running since the 2017 academic year, and include English language classes in which participants study alongside students of University College TATI and join with them for group work and discussions. They also include a variety of extracurricular activities, and are designed to cultivate internationally-minded individuals with practical English language proficiency and an interest in and understanding of other cultures, fostered through exchange with the students and faculty members of University College TATI.



University College TATI English Program (Malaysia)

Overseas Training Programs operated by Mie University

	Program	Place	Country
University-wide	Tri-U International Joint Seminar & Symposium	Hosted on a rotating basis by Mie University, Chiang Mai University, Jiangsu University, IPB University, and Guangxi University	Japan, Thailand, China, Indonesia
	University College TATI Summer English Program (August)	Tati University College	Malaysia
	University College TATI Spring English Program (March)	Tati University College	Malaysia
	Summer School (Language Training / Fisheries Practicum)	University Malaysia Terengganu	Malaysia
	Field Study in Viet Nam (Spring)	Ho Chi Min City University of Education	Vietnam
	University of British Columbia Summer English Training Program	University of British Columbia	Canada
	Thai Culture Program	Thammasat University	Thailand
	German Language and Culture Training Program	Thammasat University	Germany
College of Liberal Arts and Science, Departmental	University of South Carolina Summer English Training Program	University of South Carolina	USA
	Chinese Language and Culture Training Program	Tianjin Normal University	China
	Special English Program (College of Liberal Arts and Science)	The English Language Teaching Centre, the University of Sheffield	UK
	University of Oxford Summer English Program (Faculty of Humanities, Law and Economics)	Herfort College, University of Oxford	UK
	Language and Teaching Training Program (Faculty of Education)	Faculty of Education, The university of Auckland	New Zealand
	Overseas Clinical Training, Early Stage Overseas Experience Practicum (Faculty of Medicine, Graduate School of Medicine)	Ciang Mai University, Catholic University of Applied Science Freiburg, etc...	Thailand Germany
	Overseas Short-term Internship	Japanese companies abroad	Malaysia, Thailand, Philippines, Vietnam

These are the training programs abroad that were offered in the 2019 academic year. Program details may vary from year to year.

Inviting Foreign Faculty

Mie University invites foreign faculty to visit mainly from partner institutions. There were 19 foreign faculty members invited to the university in the 2018 academic year. In addition, we started inviting foreign faculty for our unique short term program in 2014).

International Exchange Days

We operate a number of events for international exchange between international and Japanese students, with the aim of furthering the internationalization of Mie University. A wide variety of events were held for international students last academic year, including calligraphy experience, layered ceremonial kimono experience, cooking class to learn about Japanese culinary culture, sports events, and welcome parties. Moreover, for Japanese students there was an international cooperation seminar and consultation session held in collaboration with the JICA Mie Desk, and an exhibition of folk costumes from around the world.

Admission Capacity and Number of Students

The numbers in parentheses represent the numbers of international students.

As of May 1, 2019

Faculties	Classification	First Year		Second Year		Third Year		Fourth Year		Fifth Year		Sixth Year		Faculty Total	
		Admission Capacity	Total	Admission Capacity	Total	Admission Capacity	Total	Admission Capacity	Total	Admission Capacity	Total	Admission Capacity	Total	Admission Capacity	Total
Humanities, Law and Economics	Humanities	92	97(3)	92	99(4)	102	113(2)	110	119(2)					396	428(11)
	Law and Economics	153	164(0)	153	165(1)	173	184(2)	185	238(1)					664	751(4)
	Total	245	261(3)	245	264(5)	275	297(4)	295	357(3)					1,060	1,179 (15)
Education	School Teachers Training	200	208(0)	200	208(0)	200	208(1)	200	218(0)					800	842(1)
	Human Development Science								6(4)						6(4)
	Total	200	208(0)	200	208(0)	200	208(1)	200	224(4)					800	848(5)
Medicine	Medicine	125	125(0)	125	128(0)	125	124(0)	125	125(0)	125	126(0)	125	132(0)	750	767(0)
	Nursing	80	80(0)	80	83(0)	90	80(0)	90	81(0)					340	327(0)
	Total	205	205(0)	205	211(0)	215	204(0)	215	206(0)	125	126(0)	125	132(0)	1,090	1,094(0)
Engineering	Mechanical Engineering			80	82(0)	90	95(4)	90	113(4)					260	298(8)
	Electrical and Electronic Engineering			80	80(1)	90	95(1)	90	118(5)					260	293(7)
	Chemistry for Materials			100	97(1)	100	98(0)	100	111(1)					300	306(2)
	Architecture			40	44(1)	50	50(1)	50	66(1)					140	160(3)
	Information Engineering			60	60(1)	60	60(1)	60	85(0)					180	206(1)
	Physics Engineering			40	39(1)	40	41(0)	40	58(1)					120	138(2)
	Department of Engineering	400	407(2)											400	407(2)
	Total	400	407(2)	400	402(5)	430	440(6)	430	551(12)					1,660	1,800(25)
Bioresources	Sustainable Resource Sciences	70	74(0)	70	75(0)	73	72(0)	73	84(0)					286	305(0)
	Environmental Science and Engineering	70	78(0)	70	71(0)	73	77(0)	73	87(0)					286	313(0)
	Life Sciences							104	114(0)					104	114(0)
	Life Sciences and Chemistry	80	85(0)	80	82(0)	82	83(0)							242	250(0)
	Marine Bioresources	40	41(0)	40	44(0)	42	40(0)							122	125(0)
	Total	260	278(0)	260	272(0)	270	272(0)	250	285(0)					1,040	1,107(0)
Faculty Total		1,310	1,359(5)	1,310	1,357(10)	1,390	1,431(11)	1,390	1,623(19)	125	126(0)	125	132(0)	5,650	6,028(45)
Graduate Schools	Humanities and Social Sciences		15	11(5)	15	22(8)								30	33(13)
	Education	Master	27	21(3)	27	38(7)								54	59(10)
		Professional Degree Program	14	13(0)	14	16(0)								28	29(0)
	Medicine	Master (Medicine)	12	8(2)	12	10(3)								24	18(5)
		Master (Nursing)				3(0)									3(0)
		Master (Nursing)	11	5(0)	11	14(0)								22	19(0)
		Doctoral (Nursing)	3	3(1)	3	4(0)	3	6(0)						9	13(1)
		Doctoral (Medical Life Science)	45	52(5)	45	37(6)	45	47(8)	45	55(5)				180	191(24)
	Engineering	Master	216	222(4)	216	224(7)								432	446(11)
		Doctoral	16	9(1)	16	12(5)	16	20(2)						48	41(8)
	Bioresources	Master	88	81(8)	88	83(14)								176	164(22)
		Doctoral	12	5(2)	12	13(8)	12	25(8)						36	43(18)
	Regional Innovation Studies	Master	15	13(2)	15	17(1)								30	30(3)
		Doctoral	6	7(1)	5	6(1)	5	9(2)						16	22(4)
Graduate Schools Total		480	450(34)	479	499(60)	81	107(20)	45	55(5)					1,085	1,111(119)

Number of Staff Members

As of May 1, 2019

	Professors	Associate Professors	Associate Professors (Lecturers)	Assistant Professors	Total
Faculty of Humanities, Law and Economics	35	22	3	3	63
Faculty of Education	47	23	4	0	74
Faculty of Medicine	49	50	53	196	348
Faculty of Engineering	39	40	2	21	102
Faculty of Bioresources	48	44	2	14	108
Graduate School of Regional Innovation Studies	6	1	0	2	9
College of Liberal Arts of Sciences	11	3	3	1	18
Organization for the Development of Higher Education and Regional Human Resources	1	5	4	2	12
Organization for the Promotion of Regional Innovation	2	6	0	8	16
Regional Satellite Campus Network	0	1	0	0	1
Strategic Planning Office for Regional Revitalization	2	0	1	5	8
Specific Facilities for Research and Education	3	2	3	3	11
Total	243	197	75	255	770

Numbers of teachers at University Hospital are included in Faculty/Graduate School of Medicine and Endowed Departments and Industry-Academic-Government Collaboration Departments are excluded.

Number of International Students

Faculties

The numbers in parentheses represent the numbers of females.

As of May 1, 2019

Classification Faculties	Undergraduate				Graduate						Subtotal		Total
	Degree Students		Non-Degree Students		Master Course		Doctoral Course		Non-Degree Students				
	MEXT program	Private fund	MEXT program	Private fund	MEXT program	Private fund	MEXT program	Private fund	MEXT program	Private fund	MEXT program	Private fund	
Faculty of Humanities, Law and Economics		15(6)		48(34)		13(8)				4(2)	0(0)	80(50)	80(50)
Faculty of Education		5(4)		10(9)		10(4)					0(0)	25(17)	25(17)
Faculty of Medicine					4(2)	1(1)	18(5)	7(4)			22(7)	8(5)	30(12)
Faculty of Engineering	2(0)	23(1)		7(3)	1(0)	10(5)	3(2)	5(1)		5(2)	6(2)	50(12)	56(14)
Faculty of Bioresources			1(0)	3(1)	5(3)	17(7)	12(7)	6(3)	1(1)	2(1)	19(11)	28(12)	47(23)
Graduate School of Regional Innovation Studies						3(1)	1(1)	3(1)		2(0)	1(1)	8(2)	9(3)
Center for International Education and Research			4(2)	40(27)							4(2)	40(27)	44(29)
Total	2(0)	43(11)	5(2)	108(74)	10(5)	54(26)	34(15)	21(9)	1(1)	13(5)	52(23)	239(125)	291(148)

Nationalities

The numbers in parentheses represent the numbers of females.

As of May 1, 2019

34 Countries & Regions			291 (148)										As of May 1, 2019			
Regions/Countries		Undergraduate				Graduate				Center for International Education and Research		Subtotal		Total		Percentage
		Degree Students		Non-Degree Students		Degree Students		Non-Degree Students		Non-Degree Students						
		MEXT program	Private fund	MEXT program	Private fund	MEXT program	Private fund	MEXT program	Private fund	MEXT program	Private fund	MEXT program	Private expense			
Asia Total : 251	China		15(4)		30(20)		57(26)		8(5)		30(21)	0(0)	140(76)	140	(76)	86.3%
	Republic of Korea		15(6)		4(1)				1(0)		7(4)	0(0)	27(11)	27	(11)	
	Indonesia				1(1)	15(8)	3(2)			1(1)		16(9)	4(3)	20	(12)	
	Viet Nam		10(1)		7(7)	3(1)						3(1)	17(8)	20	(9)	
	Thailand				8(7)	3(3)	1(1)			3(1)		6(4)	9(8)	15	(12)	
	Taiwan				5(3)				2(0)		1(1)	0(0)	8(4)	8	(4)	
	Myanmar					5(1)						5(1)	0(0)	5	(1)	
	Bangladesh					3(1)		1(1)				4(2)	0(0)	4	(2)	
	Malaysia		2(0)		1(0)	1(1)						1(1)	3(0)	4	(1)	
	Cambodia	2(0)	1(0)									2(0)	1(0)	3	(0)	
	Laos					1(0)	1(0)					1(0)	1(0)	2	(0)	
	Nepal						1(1)					0(0)	1(1)	1	(1)	
Philippines					1(1)						1(1)	0(0)	1	(1)		
Sri Lanka						1(1)					0(0)	1(1)	1	(1)		
Africa Total : 17	Ghana					7(2)						7(2)	0(0)	7	(2)	5.8%
	Egypt					1(0)	2(1)					1(0)	2(1)	3	(1)	
	Zambia					2(1)	1(0)					2(1)	1(0)	3	(1)	
	Mozambique						2(0)					0(0)	2(0)	2	(0)	
	Republic of Guinea						1(0)					0(0)	1(0)	1	(0)	
	Seychelles						1(1)					0(0)	1(1)	1	(1)	
Europe Total : 16	Germany				7(4)							0(0)	7(4)	7	(4)	5.5%
	France				1(1)				2(0)			0(0)	3(1)	3	(1)	
	United Kingdom										2(1)	0(0)	2(1)	2	(1)	
	Austria				1(1)							0(0)	1(1)	1	(1)	
	Belgium				1(0)							0(0)	1(0)	1	(0)	
	Romania				1(1)							0(0)	1(1)	1	(1)	
	Sweden				1(1)							0(0)	1(1)	1	(1)	
Oceania Total : 5	Fiji					1(0)						1(0)	0(0)	1	(0)	1.7%
	Papua New Guinea					1(1)						1(1)	0(0)	1	(1)	
	Solomon Islands			1(0)								1(0)	0(0)	1	(0)	
	Tonga						1(1)					0(0)	1(1)	1	(1)	
	Tuvalu						1(0)					0(0)	1(0)	1	(0)	
South and Central America Total : 2	Brazil						1(1)					0(0)	1(1)	1	(1)	0.7%
	Mexico						1(0)					0(0)	1(0)	1	(0)	
Total		2(0)	43(11)	1(0)	68(47)	44(20)	75(35)	1(1)	13(5)	4(2)	40(27)	52(23)	239(125)	291	(148)	100%
		114(58)				133(61)				44(29)						
		Degree Students				164 (66)				Non-Degree Students						127 (82)

Overseas Dispatch of Mie University Students

(1) Overseas Dispatch (Result by Department)

As of May 1, 2019

Programs / Faculty	University, Institute, and Companies	Country	Period	Number of Students
Center for International Education Research (CIER)				
The 25th Tri-U International Joint Seminar & Symposium	Chiang Mai University	Thailand	1 week	11
Short Term English Program	University of British Columbia, English Language Institute	Canada	4 weeks	11
University College TATI Summer English Program	Tati University College	Malaysia	4 weeks	17
University College TATI Spring English Program	Tati University College	Malaysia	4 weeks	27
Field Study in Viet Nam (Spring)	Ho Chi Minh City University of Education	Viet Nam	9 days	5
Short Term English Program	The University of Waikato, Pathways College	New Zealand	3 weeks	2
Chinese Language and Culture Training Program	Tianjin Normal University	China	10 days	9
German Language and Culture Training Program	Heidelberg, Bochum, Berlin	Germany	11 days	15
Total (CIER)				97
College of Liberal Arts and Sciences				
Special English Program	The English Language Teaching Centre, the University of Sheffield	U.K.	3 weeks	74
Total (Lib)				74
Faculty of Humanities, Law and Economics				
British Culture, Society and Business Programme	Hertford College, University of Oxford	U.K.	2 weeks	4
Thai Culture Program	Thammasat University	Thailand	16 days	4
Short Term English Program	The University of Queensland	Australia	16 days	5
Total (Hum)				13
Faculty of Education				
Language and Teaching Training Program	Faculty of Education, The University of Auckland	New Zealand	2 weeks	15
Total (Edu)				15
Graduate School of Medicine / Faculty of Medicine				
Overseas Clinical Training	University of Sharjah	United Arab Emirates	4 weeks	13
Overseas Clinical Training	Khon Kaen University	Thailand	4 weeks	4
Overseas Clinical Training	Thammasat University	Thailand	4 weeks	9
Overseas Clinical Training	Muhimbili University of Health and Allied Sciences	Tanzania	4 weeks	10
Overseas Clinical Training	University of Zambia	Zambia	4 weeks	2
Overseas Clinical Training	Cardiff University	U.K.	4 weeks	1
Overseas Clinical Training	University of Washington	U.S.	4 weeks	4
Overseas Clinical Training	University of the Philippines, Manila	Philippines	4 weeks	4
Overseas Clinical Training	University of Sao Paulo	Brazil	4 weeks	4
Overseas Clinical Training (Med) Total				51
Early Stage Overseas Experience Practicum	Shanghai Jiao Tong University	China	2 weeks	6
Early Stage Overseas Experience Practicum	Thammasat University	Thailand	2 weeks	2
Early Stage Overseas Experience Practicum	Khon Kaen University, University of Health Sciences, Laos	Thailand, Laos	2 weeks	11
Early Stage Overseas Experience Practicum	University of Washington	U.S.	2 weeks	6
Early Stage Overseas Experience Practicum	University of Leicester	U.K.	2 weeks	1
Early Stage Overseas Experience Practicum	Ananda Hospital	India	2 weeks	1
Early Stage Overseas Experience Practicum (Med) Total				27
Early Stage Overseas Experience Practicum	Catholic University of Applied Sciences Freiburg	Germany	9 days	3
Overseas Experience Nursing Practicum	Chiang Mai University	Thailand	9 days	4
School of Nursing / Overseas Short-term Practicum Total				7
Total (Med)				85
Graduate School of Engineering / Faculty of Engineering				
Overseas Short-term Program for Graduate School	Tati University College	Malaysia	1 month	26
Overseas Short-term Internship	Hyakugo Bank, Ltd. Japan Transcity Corporation, YAMAMORI	Thailand	10 days	6
Overseas Short-term Internship	Sumitomo Wiring Systems Ltd., Ito Seisakusho Co., Ltd.	Philippines	10 days	6
Overseas Short-term Internship	MIE METAL INDUSTRY CO., LTD. AEON CO., LTD.	Viet Nam	11 days	6
Total (Eng)				44
Graduate School of Bioresources / Faculty of Bioresources				
Summer School	Universiti Malaysia Terengganu	Malaysia	23 days	4
Total (Bio)				4
Grand Total				338

(2) Studying Abroad at Partnership Institution

Faculty	University	Country	Period	Number of Students
Faculty of Humanities, Law and Economics	University of Central Lancashire	U.K.	1 year/6 months	19
	University of North Carolina Wilmington	U.S.		
	Heidelberg University	Germany		
	University of Leipzig	Germany		
	University of Erlangen-Numberg	Germany		
	Lund University	Sweden		
	Sejong University	Korea		
	Ewha Womans University	Korea		
	National Kaohsiung Normal University	Taiwan		
University of Tasmania	Australia			
Faculty of Education	University of Central Lancashire	U.K.		1
Faculty of Medicine	Catholic University of Applied Sciences Freiburg	Germany		1
Faculty of Engineering	University of Central Lancashire	U.K.		2
	Chiang Mai University	Thailand		
Faculty of Bioresources, Graduate School of Bioresources	University of Central Lancashire	U.K.	4	
	Heidelberg University	Germany		
	Ghent University	Belgium		
Total (Med)				27

(1) + (2) 365

Interviews with Former Abroad Students

YAMAMOTO SATOSHI

(Graduate School of Biosciences / Third Grade of Doctoral Program)

1. Where did you study?

I was affiliated with the Laboratory of Aquaculture & Artemia Reference Center in the Faculty of Bioscience Engineering at Ghent University in Belgium.

2. Why did you want to study abroad?

I'm aiming for a career in research and I hoped that research experience overseas, and my achievements there, would have a big impact on my future career options.

4. What did you find difficult?

When conversing with others, in Japan we place emphasis on "listening" to others. When conversing with others, in Japan we place emphasis on "listening" to others' opinions, but I felt that in Europe the emphasis was more on "conveying" your opinions to others. So just after I arrived, I struggled to time my comments properly (especially in group conversations).

6. Did you find any differences between Mie University and your host institution?

Compared to Mie University students, the students at Ghent University have a stronger curiosity and love for their own specialist fields. I felt they were thinking over what they would do after university and how they wanted to make use of their specializations.



3. Why did you choose this host institution?

Because the field of research pursued by the center matched my own doctoral research topic. Also, I had visited the university before for an international conference, and was impressed by the campus culture and the atmosphere of the town.

5. What did you learn and experience through study abroad?

I realized that even if you're doing exactly the same research, the research background and approach can vary if you were born in different countries and have different cultures. I believe this is an important realization that will be useful for me when undertaking joint research and onsite research with institutions outside Japan.

7. What would you like to say to students considering study abroad in the future?

If you choose to study abroad you will gain many rewards, but there are also many costs (effort and money) involved in living in another country. If you hope to study abroad, I think it's important to have a clear objective and plan.

OGAWA MIYU

(Faculty of Humanities, Law and Economics / Fourth Grade)

1. Where did you study?

I studied at the University of North Carolina Wilmington, which is in the state of North Carolina in the United States. There was a lot of greenery on campus and beautiful beaches close by. The gym, library and other facilities were well-equipped.

2. Why did you want to study abroad?

I like English, and I wanted to develop my proficiency in practical English. You can't say you really know English if you've just learned it from books. I knew that my free time would be more limited after I graduated, so I thought that the best time to study abroad would be now, while I'm still a student.

4. What did you find difficult?

It was tough to take classes and do assignments in English alongside local students. It took me more than twice as long as local students to do the same assignment. But I wanted to focus not only on study but also on interacting with other students, so I started to become very conscious of prioritizing tasks and managing my time.

6. Did you find any differences between Mie University and your host institution?

I was surprised by American students' approach to study. There was lively discussion in class, and naturally everybody paid attention. The library was open 24 hours a day and filled with many students studying hard. Students worked hard and played hard, and I really respected that.



3. Why did you choose this host institution?

Because I was interested in English, I narrowed down my options to partner institutions in English-speaking countries. You can learn English in theory (grammar, vocabulary, and so on) in Japan. I wanted to study by using English, and the University of North Carolina was a partner institution where I could do that.

5. What did you learn and experience through study abroad?

I got the sense that people in the United States value one another's differences rather than what makes them the same. Everybody has their own opinions and asserts them. I became more aware of my own individuality and learned to value difference.

7. What would you like to say to students considering study abroad in the future?

If you are even slightly interested in challenging yourself, go ahead and do it. You will have many unexpected discoveries and encounters, and learn a lot. It may be a short time in your life overall, but it will surely be a precious and unforgettable memory.



国際交流協定締結機関 International Partner Institutions

学
u University
学
an University
洋大学
hai Ocean University
通大学医学部
hai Jiao Tong University
of Medicine
工大学
University of Technology
学熱機能工学系及び工力学系
y of Thermal Engineering and
ering
onics, Tsinghua University
学理学院
g of Science Zhenjiang University

◎中国社会科学院日本研究所
Institute of Japanese Studies,
Chinese Academy of Social Sciences
◎天津師範大学
Tianjin Normal University
●南開大学日本研究院
Institute of Japanese Studies, Nankai University
◎南京工業大学
Nanjing Tech University
◎北京外国語大学
Beijing Foreign Studies University
●北京理工大学外国語学院
School of Foreign Languages, Beijing Institute of Technology
●蘭州大学第2臨床医学院
The Second Medical College of Lanzhou University

大韓民国/Republic of Korea
◎世宗大学校
Sejong University
◎済州大学
Jeju National University
◎東国大学校
Dongguk University
●釜慶国立大学校水産科学部・環境海洋学部
College of Fisheries, College of Environmental
and Marine Science and Technology,
Pukyong National University
◎梨花女子大学校
Ewha Womans University
◎中央大学校
Chung Ang University

et Nam
大学
ade University
大学
iversity
市師範大学
h City University of Education
市工科大学機械工学部・応用科学部・材料工学部
Mechanical Engineering, Faculty of Applied Science,
y of Marital Engineering, Ho Chi Minh City University of Technology
科学技術院(VAST)エネルギー研究所(IES)
Academy of Science and Technology, Institute of Energy Science

イリピン/Philippines
セントラル・ルソン州立大学
Central Luzon State University
フィリピン大学マニラ校保健学部
School of Health Science,
University of the Philippines, Manila
サンカルロス大学
University of San Carlos

ニュージーランド/New Zealand
●オークランド大学教育学部
Faculty of Education,
The University of Auckland

ラリア/Australia
ニア大学
sity of Tasmania
ダース大学医学部
s University, School of Medicine

台湾/Taiwan
◎国立高雄師範大学
National Kaohsiung Normal University
◎真理大学
Aletheia University
◎中山大学
National Sun Yat-sen University
◎国立金門大学
National Quemoy University
◎南台科技大学
Southern Taiwan University of Technology
●財団法人資訊工業策進会台日産業推動センター
Taiwan-Japan Industry Center, Institute for Information Industry
●高雄医学大学産学營運處
Office for Operation of Industry and University Cooperation,
Kaohsiung Medical University Quemoy
◎国立台湾海洋大学
National Taiwan Ocean University
●国立成功大学 化学工程系
Department of Chemical Engineering,
National Cheng Kung University

フィジー/Fiji
◎フィジー国立大学
Fiji National University
◎南太平洋大学
The University of the South Pacific

アメリカ/United States of America
●ウェイン州立大学医学部
Wayne State University School of Medicine
●財団法人クリーブランドクリニック
医学生体工学ラーナー研究所
The Cleveland Clinic Foundation
Lerner Research Institute
●ニューメキシコ大学医学部
University of New Mexico School of Medicine
◎ノースカロライナ大学ウィルミントン校
University of North Carolina Wilmington
◎ハワイパシフィック大学
Hawaii Pacific University
●マーサー大学医学部
Mercer University School of Medicine
●ワシントン大学医学部
University of Washington, School of Medicine
●サウスシアトル・コミュニティカレッジ
South Seattle Community College
●東ワシントン大学
College of Business and Public Administration,
Eastern Washington University

ペルー/Peru
◎カジェタノ・エレディア大学
Cayetano Heredia University
◎国立ラ・モリーナ農業大学
La Molina National Agrarian University

ブラジル/Brazil
◎サンパウロ大学
University of Sao Paulo

◎大学間協定締結機関
25カ国・地域 66大学・機関
University Level: 25 Countries/Areas, 66 Institutions
●学部間協定締結機関
26カ国 55大学・機関
Faculty Level: 26 Countries, 55 Institutions

総協定大学数
37カ国・地域 121大学・機関
Total of 37 Countries/Areas,
121 Institutions

2020年2月1日現在
As of February 1, 2020

Foreign Student Categories

Japanese Government Scholarship Foreign Student	Japanese government offers them a scholarship which covers travel expenses to and from Japan, tuition, and living expenses while staying in Japan.
Self-Financed Foreign Student	"Self-financed foreign student" means a foreign student other than Japanese government scholarship students. Self-financed foreign students are divided into three categories: foreign-government sponsored students, short-term student exchange program students, and others.

Foreign Student Status

There are the following types of foreign student status at Mie University.

Special Auditing Student	A graduate or undergraduate student of an overseas exchange partner university with Mie University who is enrolled at Mie University as an exchange student to audit specific subjects.
Special Research Student	A graduate student of an overseas exchange partner university with Mie University who is enrolled at Mie University to conduct research under the guidance of his/her academic advisor.
Japanese Studies Student	Japanese Studies Student program is intended mainly for Japanese government scholarship students (Japanese studies students) recommended by embassies or universities who are enrolled as undergraduate students in faculties or schools of universities outside Japan which major in Japanese language or culture when they come to Japan.
Research Student	This program is for students who conduct research under the guidance of their academic advisors at Mie University.
Undergraduate Student	This program is for students who wish to obtain a degree by completing four years of undergraduate full-time classes at Mie University (six years in case of Faculty of Medicine(department of Medicine)).
Graduate Student	This program is for students who wish to obtain a degree by completing graduate full-time classes at Mie University.

Tuition and Entrance Fees

The following table shows annual tuition, entrance and examination fees for foreign students of the seven types of status mentioned above.

	Examination Fees	Entrance Fees	Annualtuition
Special Auditing Student	Exempt	Exempt	Exempt*
Special Research Student	Exempt	Exempt	Exempt
Japanese Studies Student	Exempt	Exempt	Exempt
Self-Financed Research Student	9,800 yen	84,600 yen	346,800 yen
Undergraduate Student	17,000 yen	282,000 yen	535,800 yen
Graduate Student	Master Course	30,000 yen	282,000 yen
	Doctoral Course	30,000 yen	282,000 yen
			520,800 yen

※For the students mentioned in "Memorandum for joint education program of Japanese language between Mie University and Tianjin Normal University", their annual tuition is otherwise specified.

※Those fees and tuition above are subject to change.

Tuition Exemption

High achieving undergraduate and graduate degree students who are unable to pay their tuition for financial reasons may be exempted from tuition.

Scholarship

List of Scholarship for self-financed foreign students

No	Name	Eligibility				Application Period	Scholarship	Stipend
		Faculty/Department	Year	Age	Region			
1	GAKUSHU-SHOUREIHI Scholarship	All	All Excluding Undergraduate Research students	All	All	April for This Year	Undergraduate: 48,000JPY Graduate: 48,000JPY (for a month)	For 1 year
2	Mie-Kenminkyosai Scholarship	All	All	All	All	April - May for This Year	50,000JPY (per month)	For 1 year
3	Grant of Professor Emeritus Tatsuo Ito at Mie University for Foreign Student (closed application)	All	1st year	All	All	August for this year	50,000JPY (for a year)	For 1 year
4	Rotary Yoneyama Memorial Scholarship	All	<ul style="list-style-type: none"> Undergraduate: 3rd & 4th year (medical faculty: 4th & 5th year) Master course: 1st & 2nd year Doctoral course: 3rd & 4th year (medical faculty: 3rd & 4th year) 	Under 45	All	September for Next Year	Undergraduate: 100,000JPY Graduate: 140,000JPY (for a month)	For up to 2 years
5	Benjiro Honda Scholarship	science, agriculture, forestry & fisheries, or engineering (excluding those who major in information)	<ul style="list-style-type: none"> Undergraduate: 3rd year Master course: 1st year Doctoral course: 1st year 	All	All	Mar-Apr for This Year	1,000,000JPY (for a year)	Until completion of the current course (for up to 3 years)
6	Otsuka Toshimi Foundation	who studies medical science, pharmaceutical science, nutrition science, physical education or Master of Business Administration	Graduate students	All	Asia, Arab, Africa and others	April - May for This Year	1,000,000JPY (for a year)	For 1 year - extendable (Apply directly)
		who studies medical science	Doctoral course students	Under 38		Dec-Jan for Next Year	1,000,000JPY (for a year)	For 1 year - extendable

Further Information of scholarships URL: <http://www.mie-u.ac.jp/en/international/item/scholarshipinforE.pdf>

Mie University Honor Student Scholarship for Privately Financed International Students. (Exemption of Admission and Tuition Fees)

In 2019, Mie University launched its original scholarship system with the aim of accepting outstanding international students.

It includes full exemption of admission and tuition fees during the standard years of graduate study.

The expected number of scholarship students for the 2020 academic year is 12 (2 students for each of the 6 graduate schools).

Dormitory

Foreign Students' House

《Location》

Kurimamachiya-cho, Tsu City, Mie, 514-0102

Phone: +81-(0)59-231-9064

Built in 1988

《Rent》

Name	Rent
Single Room	6,900 JPY per month
Couple Room	13,900 JPY per month

- Maintenance fee, 1,000 JPY per person per month is included but utilities expense is not.



From the left; appearance of building, private room, shared kitchen & dining

Foreign Students' Dormitory

《Location》

Edobashi, Tsu City, Mie, 514-0001

Phone +81-(0)59-232-8755

Dormitory A & B: built in 2009,

Dormitory C & D: built in 2015

《Rent》

Dormitory	Rent	Rent
A, B	Single	14,000 JPY per month
A	Quad (4 beds in a large room)	7,500 JPY per month
C, D	Single	30,000 JPY per month
C, D	Quad (4 private rooms)	19,000 JPY per month

- Maintenance fee, 1,000 JPY per person per month is included but utilities expense is not.
- The above is for international students. As for short-term students or researchers, please ask International Relations Office.



From the left; appearance of Dormitory A & B, private room, shared kitchen & dining room



From the left; appearance of Dormitory C & D, private room, shared kitchen & dining room

Women's Dormitory for International Students

《Location》

Kurimamachiya-cho, Tsu City, Mie, 514-0102

Phone: +81-(0)59-231-9064

Built in 1988

《Rent》

5,900 JPY per month



From the left; appearance of building, private room, shared kitchen & dining room

Students Interview

NGUYEN PHUONG ANH (Vietnam/Faculty of Humanities, Law and Economics)



1. Why did you decide to study in Japan (at Mie University)?

I wanted to improve my Japanese language proficiency and have the opportunity to engage with Japanese culture.



2. What sort of country is Vietnam?

It has a hot climate and lots of motorbikes. But it also has a wide variety of fruits, and the food is delicious.

3. What did you study during your time at Mie University?

I studied Japanese language and culture. One of the things that impressed me most was the politeness of communication. People use kind words and are considerate to one another in all situations. I believe this was something I could only learn at Mie University.

4. What is a Japanese word or phrase that you are fond of, and why?

Ichigo ichie (treasure each meeting, for it will never recur). This saying expresses my desire to make the most of my encounters with Japanese people and other international students here at Mie University.

5. What is your dream for the future?

To work as an interpreter in Japan. I'd especially like to work in the medical field, based on my own experience of being hospitalized in Japan.

PHOMMAHAXAY PALAMY (Laos/Graduate School of Engineering)



1. What country is Laos like?

Laos is greatly influenced by Buddhism and is rich in nature. As for meals, the taste is spicier and stronger than those of Japan. I like to cook with the local seasoning when I miss Lao food.



2. Is there anything you feel glad about choosing Mie University?

My research advisor is kind and I can consult with him about anything. It is a very important factor because there are many interactions with him while doing research as a graduate student. Besides, the environment is similar to Laos in that the university is surrounded by nature and that its neighboring towns are quiet. Therefore, I can concentrate on my studies. Support for international students is also satisfying.

3. Please tell us your favorite Japanese word or phrase, and the reason you like it.

I am fond of the phrase "yoroshiku onegai shimasu". There is no Lao counterpart of this phrase. There may be an expression that can be interpreted as a close meaning, but I think there is no phrase with exactly the same meaning. "Yoroshiku onegai shimasu" is not just a very convenient, frequently-used and everyday phrase, but also very important; it can alleviate a severe and nervous situation. Even when I ask a favor of someone, it delivers a sense of respect and encourages the person to accept it willingly.

Contact

《Mie University HP》 <http://www.mie-u.ac.jp/>

《Contact for Admission of Self-Financed International Students》

- Admission Office, Student Affairs Department Tel: 059-231-9063 E-mail: nyusi@ab.mie-u.ac.jp
Admission information of Mie University <http://www.mie-u.ac.jp/exam/index.html> (Japanese)

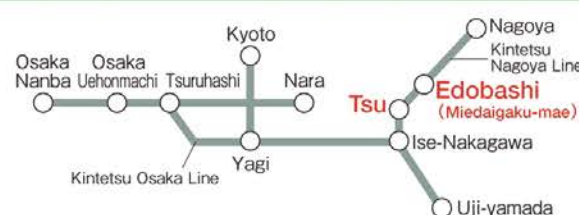
《Contact for Scholarships /Dormitory 》

- Academic Affairs and Information Department International Relations Office
Tel: 059-231-9057/9688 E-mail: ryugaku@ab.mie-u.ac.jp

《Others》

- Center for Student Support HP <http://www.mie-u.ac.jp/life/> (Japanese)
- International Relations HP <http://www.mie-u.ac.jp/en/international/> (English)

Graduate Schools	Office	Telephone	E-mail	HP
Graduate School of Humanities and Social Sciences	Student Affairs, Faculty of Humanities, Law and Economics	059-231-9197	hum-gakumu@ab.mie-u.ac.jp	http://www.human.mie-u.ac.jp/
Graduate School of Education	Student Affairs, Faculty of Education	059-231-9319	edu-gakumu@ab.mie-u.ac.jp	http://www.edu.mie-u.ac.jp/
Graduate School of Medicine	Student Affairs, Faculty of Medicine	Medicine : 059-231-5424 Nursing : 059-231-5239	g-daigakuin@mo.medic.mie-u.ac.jp	http://www.medic.mie-u.ac.jp/
Graduate School of Engineering	Student Affairs, Faculty of Engineering	059-231-9469	eng-gakumu@eng.mie-u.ac.jp	http://www.eng.mie-u.ac.jp/
Graduate School of Bioresources	Student Affairs, Faculty of Bioresources	059-231-9631	bio-gakumu@ab.mie-u.ac.jp	hum-gakumu@ab.mie-u.ac.jp
Graduate School of Regional Innovation Studies	Student Affairs, Graduate School of Regional Innovation Studies	059-231-9632	jimu@innov.mie-u.ac.jp	hum-gakumu@ab.mie-u.ac.jp



● By Kintetsu Express

From Nagoya	Kintetsu Nagoya Sta.	60 mins.	Edobashi Sta.	On foot
From Kyoto/Osaka	Ise-Nakagawa Sta.	15 mins.	Ise-Nakagawa Sta.	15 mins.

● By Kintetsu Limited Express

From Nagoya	Kintetsu Nagoya Sta.	50 mins.	Tsu Sta.	By Bus
From Osaka	Osaka Nanba Sta.	90 mins.	Tsu Sta.	15 mins.
From Kyoto	Kyoto Sta.	110 mins.	Tsu Sta.	By Taxi
			Tsu Sta.	10 mins.

International Relations Office, Mie University

1577 Kurimamachiya-cho, Tsu city, Mie, 514-8507, JAPAN

Phone: +81-(0)59-231-9924 Fax: +81-(0)59-231-5692