

TRI-U 2009

For the Global Sustainability

PROGRAMS

The 16th Tri-University
International Joint Seminar
& Symposium 2009
MIE UNIVERSITY

Oct. 19-22, 2009

BANGLADESH

Bangladesh Agricultural University

CHINA

Anhui Agricultural University

Guangxi University

Henan Normal University

Jiangnan University

Jiangsu University

Shanghai Ocean University

Xi'an University of Technology

INDONESIA

Bogor Agricultural University

JAPAN

Mie University

KOREA

Ewha Womans University

Sejong University

THAILAND

Chiang Mai University

Kasetsart University

Khon Kaen University

Suranaree University of Technology

Thammasat University

USEFUL INFORMATION

Hotels you are Staying at:

Hotel Econo Tsu (near Tsu station) Address: 3-258 Sakae-machi, Tsu, 514-0004 Phone: 059-225-7601

Contact Number in Emergency:

The following mobile phone number is available when you are in emergency such as somebody, including yourself, is sick or injured and needs medical attention, and/or you are lost in town.

080-1568-3970

The steering Committee members will take turns to attend emergency calls basically from 7:00 am to 10:00 pm everyday from Oct. 19th to Oct. 23rd. If it is a matter of life and death, do not hesitate to call anytime.

Help Desk:

The help desk will be open in the foyer of Sansui Auditorium according to the following schedule in order to answer all kinds of questions you may have during the Seminar & Symposium.

Tuesday, Oct. 20	Wednesday, Oct. 21	Thursday, Oct. 22
From 8:45 to 18:00	From 8:45 to 13:30	From 8:45 to 18:00

Message Board:

A message board is available in the foyer of Sansui Auditorium. You may post your messages, both personal and impersonal ones, to other participants.

Internet Access

A Wireless LAN connection is available at Foyer, please ask connection methods at Help desk.

Colors of the String of Name Tags: They indicate different statuses/roles.

RED: Steering Committee members. They are the faculty members or administrative staff members of Mie University and there are fifteen of them. Please ask questions and ask for help to the persons with a red tag.

YELLOW: Student Committee members. The committee consists of seventy-seven Japanese and international students of Mie University. Please ask questions and ask for help to the students with a yellow tag.

BLACK: President of Mie University, executive vice presidents, the Organizing Committee members, special lecturer, keynote lecturers and representatives of participating universities.

GREEN: All other participants from overseas.

BLUE: All other participants from Japan.

October 20

Opening Ceremony Sansui Hall 9:00-10:00

Opening address	Dr. Atsumasa Uchida, President of Mie University
Congratulatory address	Mr. Naohisa Matsuda, Mayor of Tsu City
One-minute speeches	Representatives of sixteen universities
What's New about 16th Tri-U IJSS?	Prof. Makiko Hanami, Chair of Steering Committee

Special lecture Sansui Hall 10:10-11:10

Chairperson: Hye-Sook Park (Mie University)

**University Education for Global Sustainability
(President of Environmental University ECO ASIA, Mongolia)**
Prof. Adiyasuren Ts. Borjigdkhan (Ph.D)

Take Group Photos Sansui Auditorium 11:10-11:40

11:40-12:40
Lunch at Cafeteria 2

Session 1 Population Room A 12:40-14:20

Chairperson: Suwasa Kantawanichkul (Chiang Mai University)

- 1.1 PN-01 **Comparative Analysis of International Migration In the Context of Financial Crisis**
Wang Xinyan and Ji Ying (Jiangsu University)
- 1.2 PN-02 **Comparative Study of Aging of Population between China and Japan**
Xia Ying (Jiangsu University)
- 1.3 PN-03 **Control the Increase of the Population and Improve the Quality of the Population**
Lin Jie (GuangXi University)
- 1.4 PN-04 **Development of Hinge Joint Processing With Rapid Prototype**
Sittha rodtook and Wichai Chattinnawat (Chiang Mai University)
- 1.5 PN-05 **International Migration**
Tao Le (Jiangsu University)
- 1.6 PN-06 **On the Transformation from a Populous Country to a Talented One**
Lu Yilan and Zhao Ming (Jiangsu University)
- 1.7 PN-07 **Some Thoughts on the Construction of New Automobile Culture**
Yuli and Chenlong (Jiangsu University)

Session 2 Energy Room B 12:40-14:20

Chairperson: Sri Endah Agustina (Bogor Agricultural University)

- 2.1 EY-01 **A Comparative Study of Suitable Disposing Processes for Biomass related to Civil Engineering in Thailand**
Nat Tanwattananan, Pitiwat Wattanachai (Chiang Mai University)
- 2.2 EY-02 **Analysis of the Existing Environmental Protection Industry in China**
Zezhi Liu (GuangXi University)

- 2.3 **EY-03 Application and Simulation with PID Parameter Fuzzy –tuning Control in Photovoltaic MPPT**
Wu Yunhui and Wang Yongding (Shanghai Ocean University)
- 2.4 **EY-04 Electric Cylinder Engine**
Jirawat Chiatrakul, Viboon Changrue and Sumpun Chaitep (Chiang Mai University)
- 2.5 **EY-05 Free Energy for Illumination Purposed of The Royal Initiative Development Study Center at Doi Dum the Project of “Small House in Big Jungle” Using Small Undershot Water Wheel**
Aswin Pасusaritakon, Sumpun Chaitep, Saritporn Vittayapadung and Cun Shan Zhou (Chiang Mai University)
- 2.6 **EY-06 Performance Evaluation of Diesel Generator Set Using Transformer Reused Oil**
Parachawee Krisadawat, Nirun Suwannasit, Wassanai Wattanutchariya (Chiang Mai University)
- 2.7 **EY-07 Potential of Dendrothermal Power Generation in Thailand and its Concerns**
Abhinav Kulkarni, Jenjira Piamdee, Nat Vorayos and Weerachai Arjharn (Chiang Mai University)
- 2.8 **EY-08 Potentials of Hydrogen Use for Aircraft fuel**
Nad Siroros and Yucho Sadamichi (Chiang Mai University)

14:20-14:35
Coffee Break at Foyer

Session 3 Communication Room A 14:35-16:00

Chairperson: Rungchat Chompu-inwai (Chiang Mai University)

- 3.1 **CN-01 A Field Image Monitoring System Based on Embedded Linux**
Chiaki Yamaguchi and Ryoei Ito (Mie University)
- 3.2 **CN-02 A Preliminary Study on Sino-Japanese Intercultural Communication -- from the Development of Zhenjiang and Yangzhou Tourism**
Zhang Qingyue (Jiangsu University)
- 3.3 **CN-03 Cross-cultural Communication**
Peangkwan Suwannimitr (Khon Kaen University)
- 3.4 **CN-04 Domain Ontology Modeling of Tea Pests**
Zhe Ji, Shaowen Li, Youhua Zhang (Anhui Agricultural University)
- 3.5 **CN-05 Exploring the Development of Henan Opera**
Yu Zhan (Henan Normal University)

Session 4 Energy Room B 14:35-16:00

Chairperson: Chunguo Zhou (Xi'an University of Technology)

- 4.1 **EY-09 Producing Bio-Surfactant Methyl Ester Sulfonates (MES) from *Jatropha curcas* Linn**
Novianus Efrat, Erliza Hambali (Bogor Agricultural University)
- 4.2 **EY-10 Production of Methyl Ester Sulfonate using Sulfonation Method as an Environmental-friendly Biosurfactant from Palm Oil**
Ahmad Mohammad Fikri Paramadina Unggul Yudha, Erliza Hambali (Bogor Agricultural University)
- 4.3 **EY-11 Rescue the Earth by Biogas**
Pitchsinee Kanpoon (Khon Kaen University)
- 4.4 **EY-12 Simultaneous Desalination and Power Generation Using Solar Energy**
Kang Zhengyang (Jiangsu University)

- 4.5 EY-13 **The Adsorption Isotherm Analysis of the Binding of Carbohydrate-Binding Modules**
Shunsuke Ichikawa, and Shuichi Karita (Mie University)
- 4.6 EY-14 **The Analysis of Energy Consumption and Carbon Dioxide Emissions in Thai Manufacturing Sector by Decomposition Technique**
Yasintinee Aimyuak, Wongkot Wongsapai, and Chatchawan Chaichana (Chiang Mai University)
- 4.7 EY-15 **The Investigation on Rule-Based Control Strategies for Mobile Robot**
Kajon Anuditaya, Boonsri Kaewkham-ai (Chiang Mai University)
- 4.8 EY-16 **History and Application of Superconductivity to Solving Energy Problem**
Etsutaka Idota (Mie University)
- 4.9 EY-17 **Rotor Blade Sectional Performance with Yawed Inflow**
Thibault Mathieu, Takao Maeda, and Yasunari Kamada (Mie University)

Poster only presentations by faculty members

EY-18 **The Research of the Power Synthesizer's Efficiency of PHEV Based on Virtual Prototype Technology**
Chunguo Zhou, Kai Liu, Yahui Cui, Chaofeng Ma (Xi'an University of Technology)

EY-19 **Bio-briquette Technology and Its Potential as Fuel Substitution Program for House-hold and Small Scale Industries in Indonesian Urban and Sub-urban Area**
Sri Endah Agustina (Bogor Agricultural University)

Poser Session (1-4)

Foyer 16:00-17:30

The presenters of sessions 1-4 should stand in front of own poster.

17:30-18:30

Leave for Green Park Hotel by Bus

18:30-20:30

Welcome Party at 6th Floor, Green Park Hotel

October 21

Keynote Lectures 1, 2 Sansui Hall 9:00-10:00

Chairperson: Makiko Hanami (Mie University)

KN-01 Convenience and Identity in Our Daily Lives

Hideki Norimoto (Mie University)

KN-02 Exploring How and Why Disfluency Occurs in Dialogue

Etsuko Yoshida (Mie University)

10:00-10:15

Coffee Break at Foyer

Session 5 Communication Room A 10:15-11:30

Chairperson: Ding you Huang (Jiangsu University)

5.1 CN-06 Research on Concept Extraction in Tea Ontology Learning

Bobo Cheng, Youhua Zhang, Shaowen Li, Lijun Zhu (Anhui Agricultural University)

5.2 CN-07 The research about Detection of Dissolved Oxygen in Water based on C8051F040

Li Sun, Yu Zhao (Anhui Agricultural University)

5.3 CN-08 To Improve Students' Abilities to Communicate in English by Use of a 'Conversation Notebook

Masaya Mori (Mie University)

5.4 CN-09 Development of Adjustable Automation Apparatus

Nathakarn Suetrong, Khontorn Channiprasart (Suranaree University of Technology)

5.5 CN-10 The World's Society now and Language Development

Zhang Kun (Jiangsu University)

Poster only presentations by faculty members

CN-11 Improvement of Industrial Management Curriculum for Desiring Graduate Students toward Industrial Requirements Using Quality Function Deployment Technique

Rungchat Chompu-inwai and Chenita Jinadech (Chiang Mai University)

Session 6 Population Room B 10:15-11:30

Chairperson: Supakij Nontananandh (Kasetsart University)

6.1 PN-08 The Dynamics of Indonesian Migrant Workers in Japan under the Industrial Training and Technical Internship Program

Nawawi (Mie University)

6.2 PN-09 The Impact of Aging of Population on Chinese Economy

Ge Lan (Jiangsu University)

6.3 PN-10 On the Growth of World Population

Luo Junjun (Jiangsu University)

6.4 PN-11 Services in Rural Areas Colleges and Universities to Optimize the Quality of the Structure of the Rural Population

Yang Yang (Jiangsu University)

Poster Session (5-6)**Foyer 11:30-12:30**

The presenters of session 5 & 6 should stand in front of own poster.

12:30-13:30

Box Lunch at Room A&B

Excursion by Bus**Kameyama-city 13:40-17:30**

Sharp's Kameyama Plant & Sekijuku

Sharp's Kameyama Plant is an famous LCD production facility. The plant is known as a "Super Green Factory" which minimizes environmental burden to the utmost.

Sekijyuku is an old inn town along the Tokaido main road in the Edo period.

For Students

City Exploration & Dinner in Groups 17:30-

For Saff & Faculty

Organizers' meeting (CIER) 17:30-19:00

Dinner at a Japanese Style Restaurant 19:30-21:30

October 22

Keynote Lectures 3, 4 Sansui Hall 9:00-10:00

Chairperson: Hiroshi EHARA (Mie University)

KN-03 **Sustainability : Think Universally and Act Globally**

Wasan Jompakdee (Chiang Mai University)

KN-04 **Transmembrane Behavior of Ca²⁺ in *E. coli* Cells and Biological Window Effect of High-Intensity Pulsed Magnetic Field**

Ma Haile, He Ronghai, Wang Heli (Jiangsu University)

10:00-10:15

Coffee Break at Foyer

Session 7 Food Room A 10:15-11:30

Chairperson: Jinsong Liang (Guangxi University)

7.1 FD-01 **A Design of an Expert System for Intercropping Planning**

Saharat Arreeras, Thara Angskun and Jitimon Angskun (Suranaree University of Technology)

7.2 FD-02 **Activities in Food Education at Elementary School in Japan**

Yuko Nakanishi (Mie University)

7.3 FD-03 **Cloning and Function Analysis of Tea Plant Cold-responsive Genes**

Yu Wang, Chang-Jun Jiang (Anhui Agricultural University)

7.4 FD-04 **Development of Biofilm on Used Plastic Bottles for Biological Treatment of Small Scale Food Industrial Waste**

P. Santana and R. Dewanti-Hariyadi (Bogor Agricultural University)

7.5 FD-05 **Effect of Packaging Kopyor Coconut (*Cocos nucifera L.*) on Sensory Evaluation**

Kandi Jelita and C. Hanny Wijaya (Bogor Agricultural University)

7.6 FD-06 **Effect of Coagulants on Tofu Processing**

M.B. Uddin & MFH Shikder (Bangladesh Agricultural University)

7.7 FD-07 **Fast Quality Control of Fresh Tea Leaves by NIR Spectroscopy**

Sheng-Peng Wang, Xiao-Chun Wan, Zheng-Zhu Zhang (Anhui Agricultural University)

Session 8 Environment Room B 10:15-11:30

Chairperson: Sate Sampattagul (Chiang Mai University)

8.1 ET-01 **A Probe into the Development and Trends of Environmental Economics**

Zhang Jin (Jiangsu University)

8.2 ET-02 **A Study on Geomorphic Characteristic and Sediments Distribution in Padori Beach**

Won Young Lee, Hyo Hyun Sung (Ewha Womans University)

8.3 ET-03 **A Study on the Feasibility of Zero-Emissions Air Transport**

Asit Apornsupavit and Matthew Cole (Chiang Mai University)

8.4 ET-04 **Adventitious Roots of Sago Palm Play an Important Role to Avoid Salt Stress**

Wikanya Prathumyot, Hiroyuki Shibata and Hiroshi Ehara (Mie University)

8.5 ET-05 **Development of Forestry Green Economy in Northeastern China -A case study of the Greater Hignan Mountain**

Zhao Wei and Ji Ying (Jiangsu University)

8.6 ET-06 **Different Countries' Students have a same Goal**

Jiashuo Li (GuangXi University)

8.7 ET-07 **Effect of Bioextract Fermented from Fish in Stillage on the Growth and Yield of Moroheiya (*Corchorus olitorius* L.)**

Rusama Marubodee, Weenarat Moonrat and Somchai Chakhatrakon (Thammasat University)

11:30-12:30
Lunch at Cafeteria 2

Session 9 Food Room A 12:30-13:45

Chairperson: Rimbawan (Bogor Agricultural University)

9.1 FD-08 **Drying of Banana Using Superheated Steam Followed by Hot Air**

Nathawit Pongpun, Aree Achariyaviriya, Siva Achariyaviriya and Kodwan Namsanguan (Chiang Mai University)

9.2 FD-09 **Food Crisis and Water**

Liu Xue (Jiangsu University)

9.3 FD-10 **Growth Responses of Sago Palm to Low pH Condition I. Effect of Low pH on Growth and Nutrient Absorption in Sago Palm Seedling**

Shina Kinoshita, Ornprapa Anugoolprasert, Hiroyuki Ikegami, Masafumi Shimizu and Hiroshi Ehara (Mie University)

9.4 FD-11 **Growth Response of Sago Palm to Low pH Condition II: Effect of Aluminum on Growth and Nutrient Absorption in Sago Palm Seedling**

Ornprapa Anugoolprasert, Shina Kinoshita, Hiroyuki Ikegami, Masafumi Shimizu and Hiroshi Ehara (Mie University)

9.5 FD-12 **Intestinal Transport of Pure Theanine and Theanine in Green Tea Extract: Green Tea Components Inhibits Theanine Absorption and Promotes Theanine Excretion**

Ya-Ning Lu, Men Long, Zheng-Zhu Zhang, Da-Xiang Li, Xiao-Chun Wan (Anhui Agricultural University)

9.6 FD-13 **Investigation of the Site-Specific Accumulation of Catechins in the Tea Plant (*Camellia sinensis* (L.) O. Kuntze) via Vanillin-HCl Staining**

Yajun Liu, Liping Gao, Tao Xia and Lei Zhao (Anhui Agricultural University)

9.7 FD-14 **New Reflections on National Food Security on the Basis of World Food Crisis**

Liu Jing (Jiangsu University)

Session 10 Environment Room B 12:30-13:45

Chairperson: Sorn Suwannachot (Thammasat University)

10.1 ET-08 **Environmental Learning for Regional Elementary School: USR of Mie University**

Shun Yoshimura, Hye-Sook Park (Mie University)

10.2 ET-09 **Influence of oceanographic environment on squids: A review of recent research**

Caojie and Chen xinjun (Shanghai Ocean University)

10.3 ET-10 **Research Progress and Development on Noise of Centrifugal Pumps in China**

Yang Jun and Yuan Shouqi (Jiangsu University)

10.4 ET-11 **Rice Straw Management as an Agroecotechnology to Support Sustainable Agriculture in Indonesia**

Devi Novi Astuti and Sugiyanta (Bogor Agricultural University)

- 10.5 ET-12 **Study on Sediment Transport in Songkhla Lake Basin**
Suchewan Yoyrurob and Winai Liengcharernsit (Kasetsart University)
- 10.6 ET-13 **Testing Toxicity of Lead and Cadmium in Micro Algae *Chaetoceros gracilis***
Martiwi Diah Setiawati, Dwi Hindarti, and Richardus Kaswadji (Bogor Agricultural University)
- 10.7 ET-14 **The Interaction between Cellooligosaccharides and the Cellulase Catalytic Domain**
Misa Kanie, and Shuichi Karita (Mie University)

Coffee Break at Foyer 13:45-14:00

Session 11 Food Room A 14:00-15:15

Chairperson: Jianxia Chang (Xi'an University of Technology)

- 11.1 FD-15 **PCR-DGGE Analysis of the Bacterial Community of different Chinese liquor daqu**
Yibao Gao, Yan Xu and Haiyan Wang (Jiangnan University)
- 11.2 FD-16 **Postharvest Treatments to Maintain Quality and Extend Shelf Life of Strawberry (*Fragaria ananassa*)**
Nurfajrianti (Bogor Agricultural University)
- 11.3 FD-17 **Shelf life extension of fresh pork meat by ginger and galangal**
N. Lertthanaphol and T.I. Wirjantoro (Chiang Mai University)
- 11.4 FD-18 **The Applied of Quantitative Trait Loci Mapping on Solving the Food Resistance's Problems**
Dea Rynanda Putri, Farid Mochamad Afendi, M.Si (Bogor Agricultural University)
- 11.5 FD-19 **The hematological status of, and oxidative stress in, hybrid catfish (*Clarias macrocephalus* x *C. gariepinus*) that have been exposed to various temperatures**
Taratip Pitaksong and Surintorn Boonanuntanasarn (Suranaree University of Technology)
- 11.6 FD-20 **Grain Security and Sustainable Development**
Siqi Huang (Guangxi University)

Poster only presentations by faculty members

FD-21 **Enzymatic production and sensory evaluation of dietetic soft drinks from pineapple fruit juice**
M.G. Aziz1 and M.B. Uddin (Bangladesh Agricultural University)

Session 12 Environment Room B 14:00-15:15

Chairperson: Patrapon Kamonphet (Chiang Mai University)

- 12.1 ET-15 **The Problem and Present Situation of Greenhouse Effect and the Analysis on Energy Saving and Emission Reduction Centered Strategy in China**
Ge Jinwen (Jiangsu University)
- 12.2 ET-16 **The Way of using Plastic Bags in China**
Li Juan (GuangXi University)
- 12.3 ET-17 **Water Quality Management Model for Tidal Water System**
N. Inyim and W. Liengcharernsit (Kasetsart University)
- 12.4 ET-18 **A Study on the Utilization of Waste Materials for Environmental Conservation**
Naoya Takahashi and Md. Zakaria Hossain (Mie University)
- 12.5 ET-19 **Optimized Assessment Model of Urban Three - dimensional Crossroad Design Plan**
Lv Yiqian (Jiangsu University)

Poster only presentations by faculty members

ET-20 **Applications of Life Cycle Assessment to Sustainable Idea**
Sate Sampattagul and Tanongkiat Kiatsiriroat (Chiang Mai University)

ET-21 **Comparative Study on Air Pollution Concentrations Predicted from AERMOD Air Quality Model by Using Different Methods of Creating the Upper Air Data**
Sorn Suwannachot (Thammasat University)

ET-22 **Water Resources and Ecological Environment Problems in the Yellow River Estuary**
Chang Jianxia and Wang Yimin (Xi'an University of Technology)

ET-23 **Environmental situation and education in China**
Wu Xiangyang, Huang Weihong (Jiangsu University)

ET-24 **Exploring the employment problems of College Students**
Huang Ding-you (Jiangsu University)

15:15-15:30
Coffee Break at Foyer

Poster Session (7-12)

Foyer 15:30-17:00

The presenters of session 7-12 should stand in front of own poster.

17:00-17:30
Poster removal at Foyer

Closing Ceremony Sansui Hall 17:30-19:00

Closing Address	Dr. Atsumasa Uchida, President of Mie University
Presentation of Best Student Presentation Awards	Dr. Atsumasa Uchida, President of Mie University
Presentation of Certificates of Completion	Dr. Atsumasa Uchida, President of Mie University
Address by the Host University for the 17th Tri-University International Joint Seminar & Symposium 2010	

19:00-21:00
Farewell Party at Reception Hall

Poster Schedule

Posters will be displayed at the Foyer of the Sansui Hall during the entire conference period (from Tuesday, October 20 through Thursday, October 22). To encourage discussions and to facilitate exchange of information, posters are arranged according to the themes. Stand by your poster during the poster session determined by your paper number.

Duty Time

Odd numbers: 1st half of a poster session

Even numbers: 2nd half of a poster session

Monday, October 19

15:30 – 17:00 Authors place posters on board

Put your poster up in the specific space to match your paper number

Tuesday, October 20

9:00 – 17:30 Posters open

16:00 – 17:30 Poster Session I (PN01-07, CN01-05, EY01-19)

16:00 – 16:45 (odd numbers)

16:45 – 17:30 (even numbers)

Wednesday, October 21

9:00 – 17:30 Posters open

11:30 – 12:30 Poster Session II (PN08-11, CN06-11)

11:30 – 12:00 (odd numbers)

12:00 – 12:30 (even numbers)

Thursday, October 22

9:00 – 17:00 Posters open

15:30 – 17:00 Poster Session III (ET01-24, FD01-21)

15:30 – 16:15 (odd numbers)

16:15 – 17:00 (even numbers)

17:00 – 17:30 Authors remove posters from boards

Posters left after the conference period may be discarded.

Special Exhibitions

Special Exhibitions will be displayed at the Foyer of the Sansui Hall during the entire conference (from Tuesday, October 20 through Thursday, October 22).

Japan International Cooperation Agency (JICA)

National Institute of Vegetable and Tea Science, National Agriculture and Food Research Organization

National Research Institute of Aquaculture, Fisheries Research Agency



The 16th Tri-University International Joint Seminar & Symposium at Mie University

Tri-U 2009 Special Lecture

University Education for Global Sustainability

Time & Date: 10:10-11:10, Oct. 20

Place: Sansui Hall at Mie University

Lecturer

Prof. ADIYASUREN Ts. Borjigidkhan(Ph.D)

President of Environmental Education and Research
Institute of ECO ASIA, Mongolia

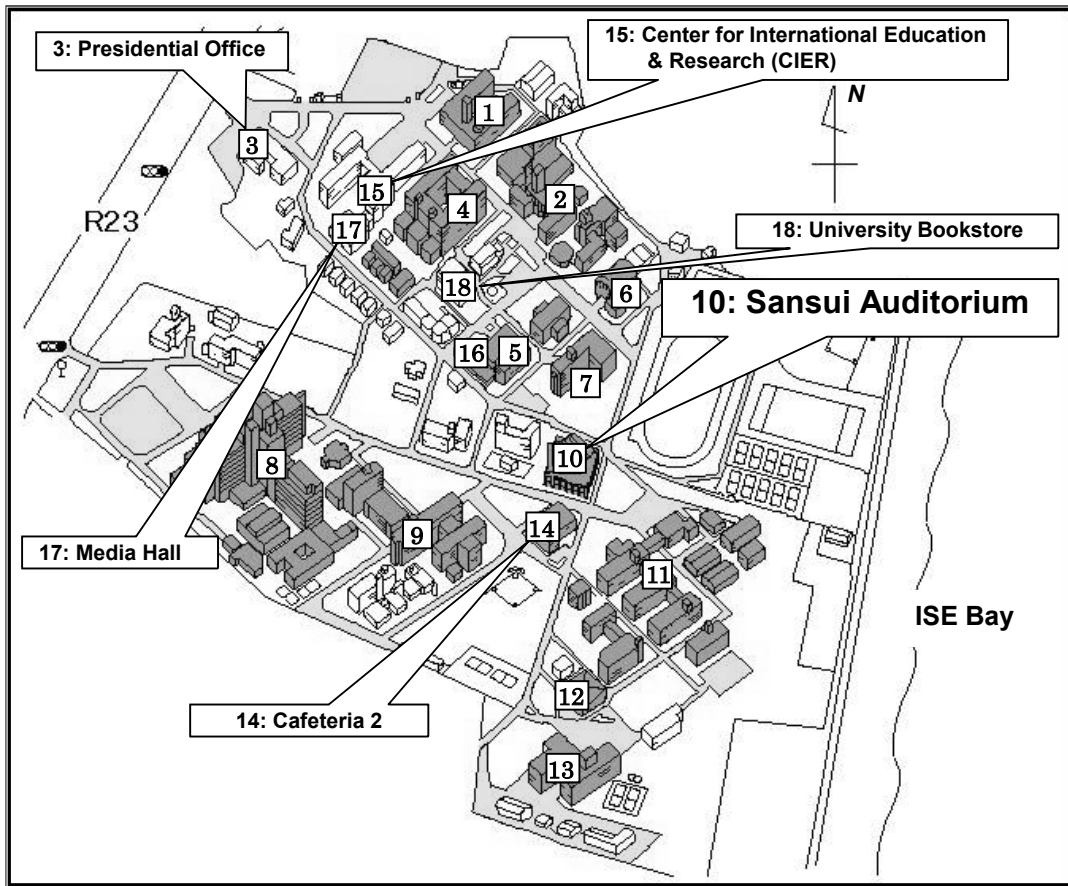
President of Mongolian National Academy of Science

Prof. Adiyasuren Ts. Borjigidkhan is highly recognized as one of the Mongolian most famous experts with extensive experiences in the field of environmental management, education for sustainable development and international relations. He has been associated with many constituent bodies of UN and International organizations. He is one of the authors of Mongolian Human Development Report 2003.

His has published 15 books and more than 100 scientific publications and made presentations in the field of environmental monitoring, management natural grasslands, climate change including CDM, drought, desertification aspects, remote sensing and education on sustainable development.



Campus Map

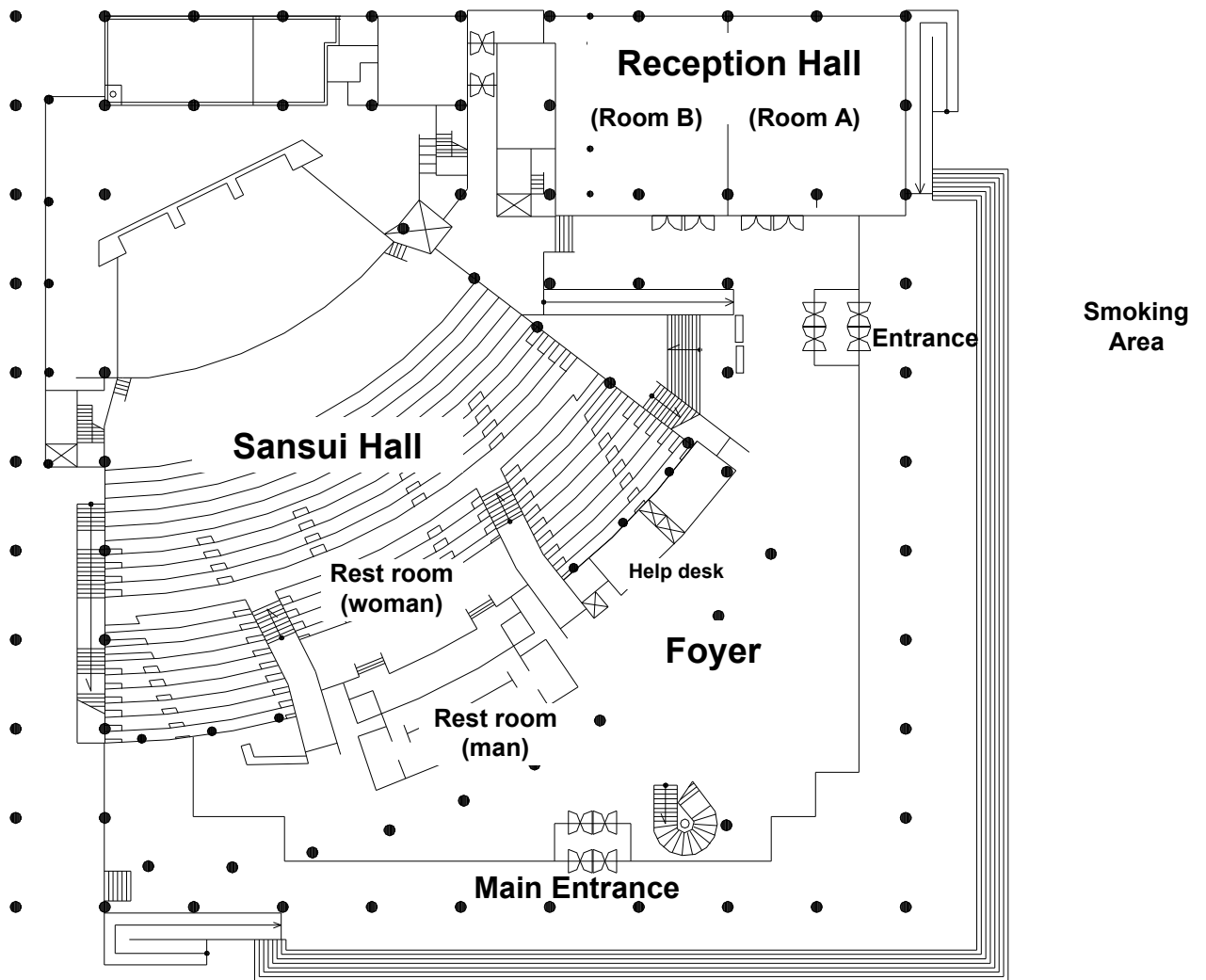


- | | |
|---|---|
| [1] Faculty of Education | [15] Center for International Education & Research (CIER) |
| [2] Common Education | [16] Center for Information Technology and Networks |
| [3] Presidential Office | [17] Media Hall |
| [4] Faculty of Bioresources | [18] University Bookstore |
| [5] University Library | |
| [6] Gymnasium 1 | |
| [7] Faculty of Humanities and Social Sciences | |
| [8] University Hospital | |
| [9] Faculty of Medicine | |
| [10] Sansui Auditorium | |
| [11] Faculty of Engineering | |
| [12] Gymnasium 2 | |
| [13] University Research Hall 1 | |
| [14] Cafeteria 2 | |



Overview of Mie University

Sansui Auditorium in Mie University



Seminar and Symposium site; Sansui Auditorium